

KD-Validated Anti-KEAP1 Mouse Monoclonal Antibody



Catalog #: 61257

Aliases

KEAP1; Kelch Like ECH Associated Protein 1; KLHL19; INrf2; KIAA0132; Kelch-Like ECH-Associated Protein 1; Kelch-Like Family Member 19; Cytosolic Inhibitor Of Nrf2; Kelch-Like Protein 19; MGC10630; MGC20887; MGC1114; MGC4407; MGC9454; KEAP1 Delta C; INRF2

Background

Gene Name: KEAP1

NCBI Gene Entry: [9817](#)

UniProt Entry: [Q14145](#)

Application Information

Molecular Weight: Predicted, 70 kDa, observed, 55-60 kDa

Clonality: Mouse monoclonal antibody

Clone ID: 25GB495

Species Reactivity: Human, mouse, rat

Applications Tested: Western blotting (WB), flow cytometry (FCM)

Immunogen

Recombinant protein of human KEAP1

Isotype

Mouse IgG1

Storage Buffer

Supplied in PBS (pH 7.4) containing 50% glycerol, and 0.02% sodium azide.

Storage

Store at -20 °C for one year.

Recommended Dilutions

Western Blotting (WB): 1:2,500-1:5,000

Flow Cytometry (FCM): 1:2,000

Note: This product is for research use only.

Validation Data

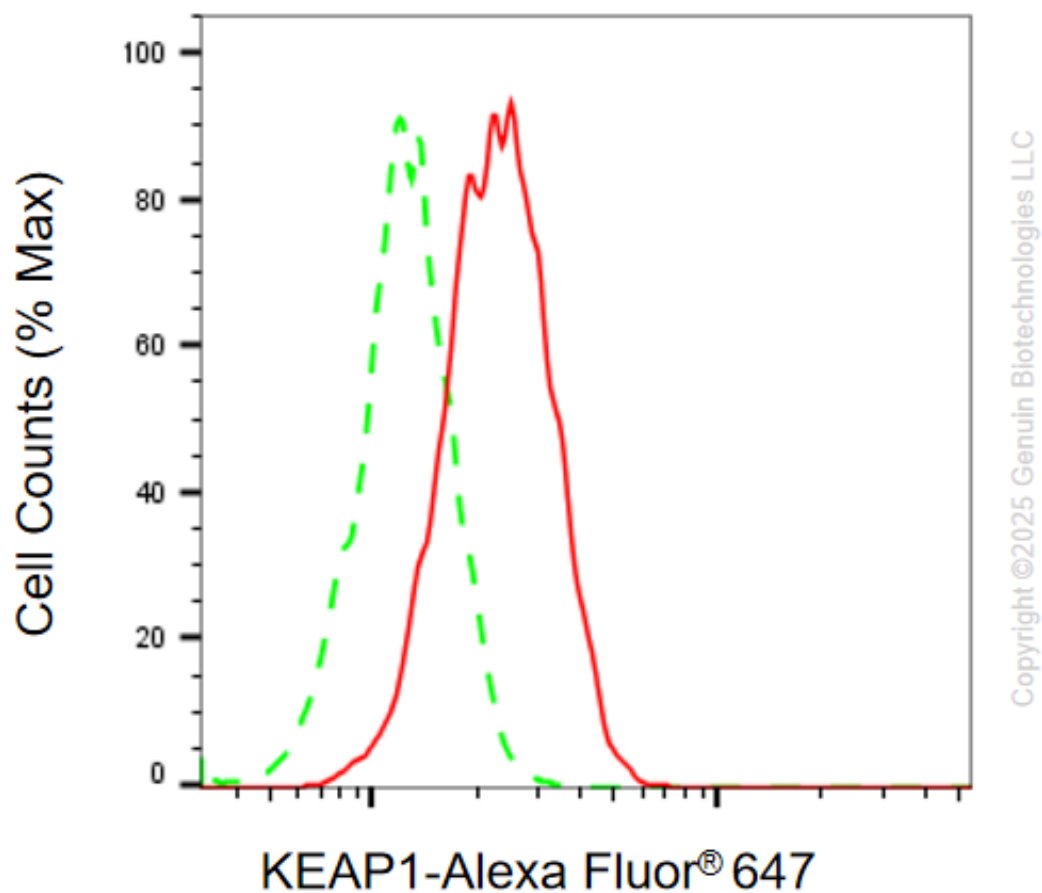
SUPPORT

SUPPORT@GENUINBIOTECH.COM
TEL: +1-540-855-7041

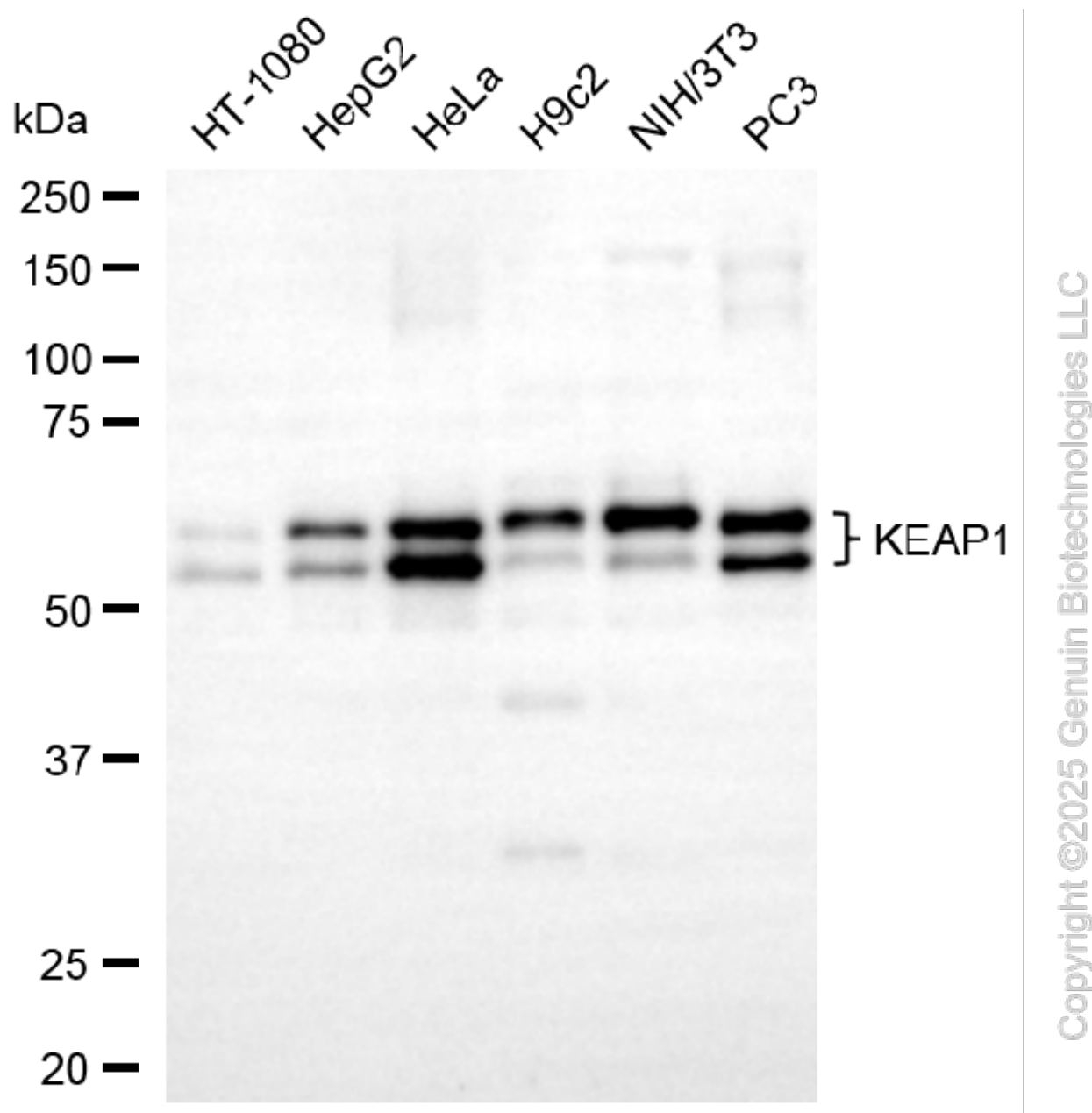
ORDERS

SALES@GENUINBIOTECH.COM
FAX: +1-540-855-7041

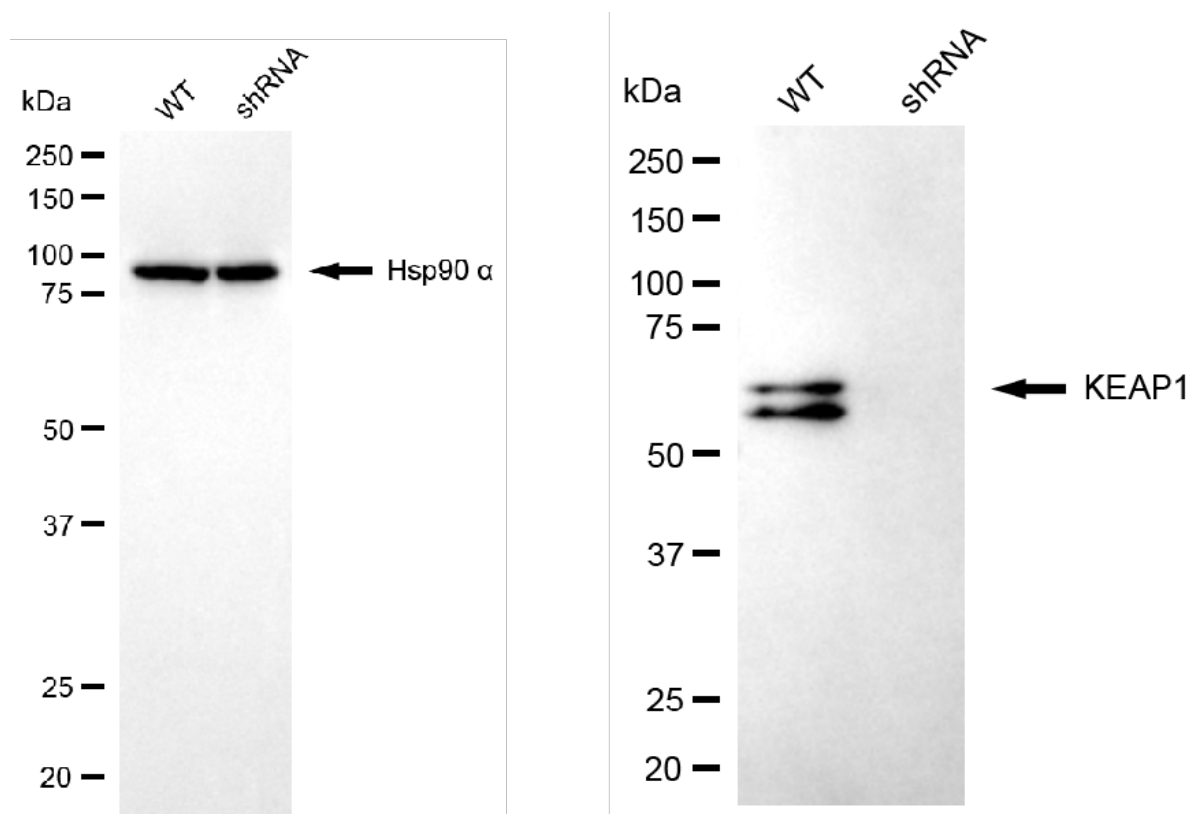
WWW.GENUINBIOTECH.COM



Flow cytometric analysis of KEAP1 expression in HAP-1 cells using anti-KEAP1 antibody (Cat# 61257, 1:2,000). Green, isotype control; red, KEAP1.



Western blotting analysis using anti-KEAP1 antibody (Cat#61257). Total cell lysates (30 µg) from various cell lines were loaded and separated by SDS-PAGE. The blot was incubated with anti-KEAP1 antibody (Cat#61257, 1:5,000) and HRP-conjugated goat anti-mouse secondary antibody (Cat#101, 1:20,000) respectively. Image was developed using FeQ™ ECL Substrate Kit (Cat#226).



Western blotting analysis using anti-KEAP1 antibody (Cat#61257). KEAP1 expression in wild-type (WT) and KEAP1 shRNA knockdown (KD) HeLa cells with 30 µg of total cell lysates. Hsp90 α serves as a loading control. The blot was incubated with anti-KEAP1 antibody (Cat#61257, 1:1,000) and HRP-conjugated goat anti-mouse secondary antibody (Cat#101, 1:20,000) respectively. Image was developed using FeQ™ ECL Substrate Kit (Cat#226).