

KD-Validated Anti-ALDH4A1 Mouse Monoclonal Antibody



Catalog #: 61263

Aliases

ALDH4A1; Aldehyde Dehydrogenase 4 Family Member A1; L-Glutamate Gamma-Semialdehyde Dehydrogenase; P5CDh; ALDH4; Delta-1-Pyrroline-5-Carboxylate Dehydrogenase, Mitochondrial; Aldehyde Dehydrogenase Family 4 Member A1; P5C Dehydrogenase; Mitochondrial Delta-1-Pyrroline 5-Carboxylate Dehydrogenase; Delta-1-Pyrroline-5-Carboxylate Dehydrogenase; Aldehyde Dehydrogenase 4 Family, Member A1; Epididymis Secretory Sperm Binding Protein; EC 1.2.1.88; EC 1.5.1.12; P5CDH; P5CD

Background

Gene Name: ALDH4A1

NCBI Gene Entry: [8659](#)

UniProt Entry: [P30038](#)

Application Information

Molecular Weight: Predicted, 62 kDa, observed, 62 kDa

Clonality: Mouse monoclonal antibody

Clone ID: 25GB525

Species Reactivity: Human, rat

Applications Tested: Western blotting (WB)

Immunogen

Recombinant protein of human ALDH4A1

Isotype

Mouse IgG1

Storage Buffer

Supplied in PBS (pH 7.4) containing 50% glycerol, and 0.02% sodium azide.

Storage

Store at -20 °C for one year.

Recommended Dilutions

Western Blotting (WB): 1:1,000-1:2,500

SUPPORT

SUPPORT@GENUINBIOTECH.COM
TEL: +1-540-855-7041

ORDERS

SALES@GENUINBIOTECH.COM
FAX: +1-540-855-7041

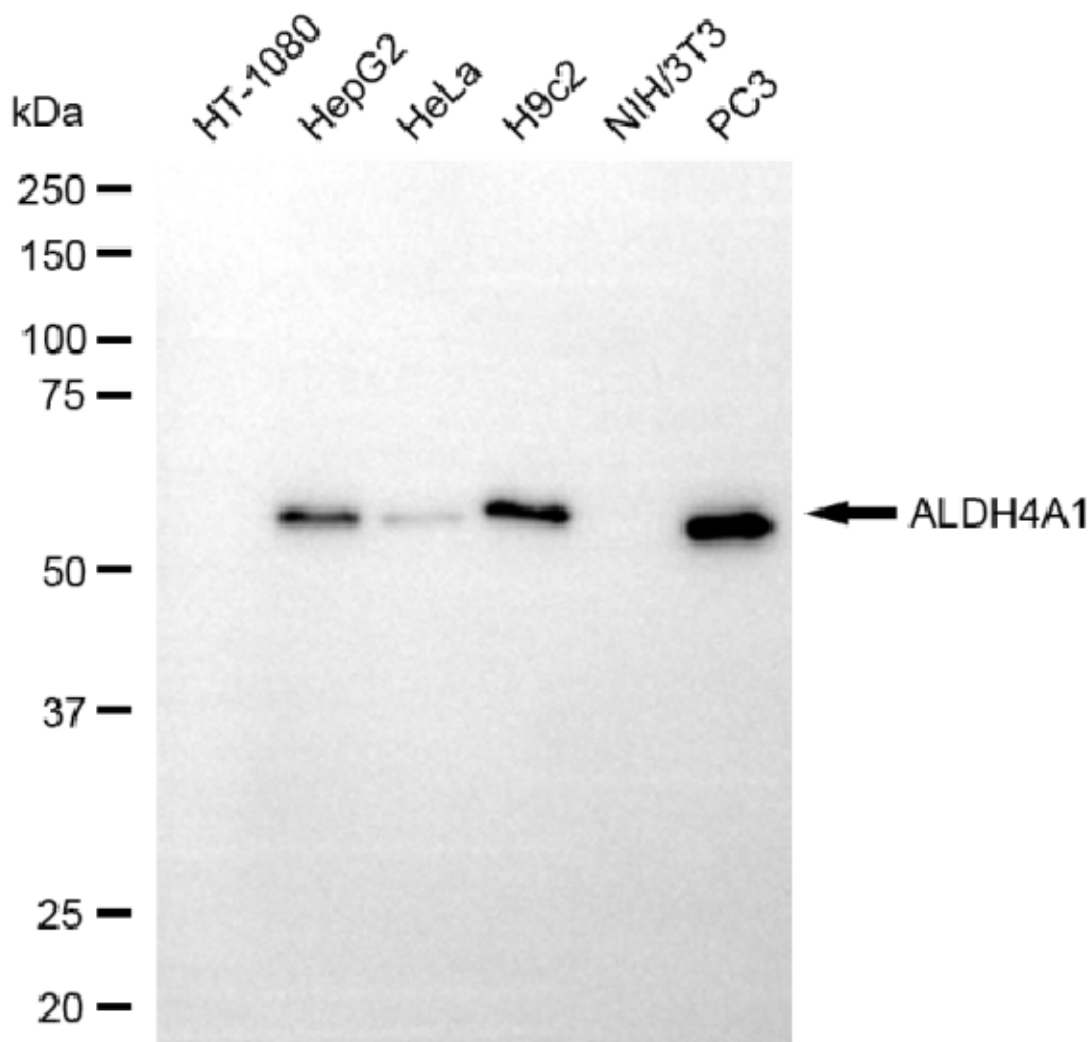
WWW.GENUINBIOTECH.COM

KD-Validated Anti-ALDH4A1 Mouse Monoclonal Antibody

PAGE 2

Note: This product is for research use only.

Validation Data



Copyright ©2025 Genuin Biotechnologies LLC

Western blotting analysis using anti-ALDH4A1 antibody (Cat#61263). Total cell lysates (30 µg) from various cell lines were loaded and separated by SDS-PAGE. The blot was incubated with anti-ALDH4A1 antibody (Cat#61263, 1:2,500) and HRP-conjugated goat anti-mouse secondary antibody (Cat#101, 1:20,000) respectively. Image was developed using FeQ™ ECL Substrate Kit (Cat#226).

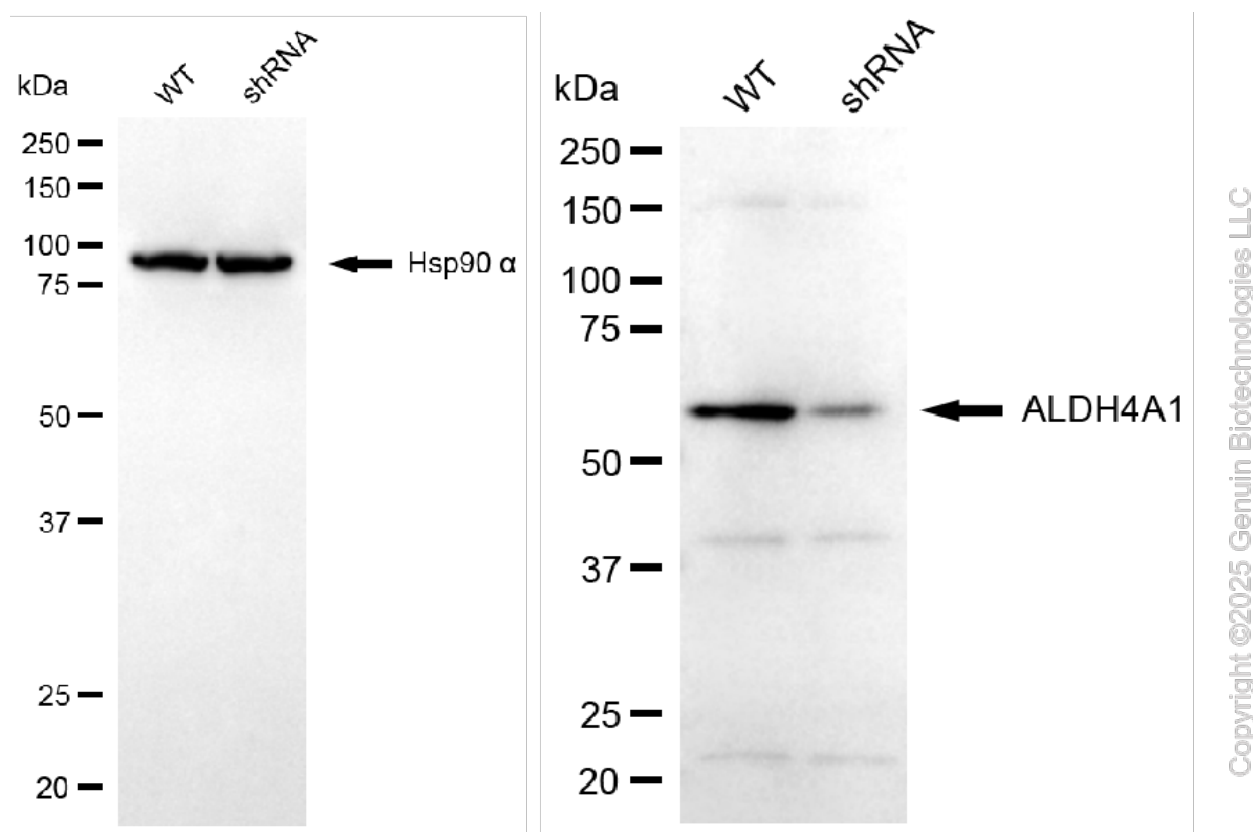
SUPPORT

SUPPORT@GENUINBIOTECH.COM
TEL: +1-540-855-7041

ORDERS

SALES@GENUINBIOTECH.COM
FAX: +1-540-855-7041

WWW.GENUINBIOTECH.COM



Western blotting analysis using anti-ALDH4A1 antibody (Cat#61263). ALDH4A1 expression in wild-type (WT) and ALDH4A1 shRNA knockdown (KD) HeLa cells with 30 μ g of total cell lysates. Hsp90 α serves as a loading control. The blot was incubated with anti-ALDH4A1 antibody (Cat#61263, 1:1,000) and HRP-conjugated goat anti-mouse secondary antibody (Cat#101, 1:20,000) respectively. Image was developed using FeQ™ ECL Substrate Kit (Cat#226).