

KD-Validated Anti-Keratin 7 Recombinant Rabbit Monoclonal Antibody



Catalog #: 61269

Aliases

Keratin 7; CK-7; SCL; K7; Keratin, Type II Cytoskeletal 7; Sarcolectin 2; K2C7 2; CK7 2; Keratin, 55K Type II; Cytoskeletal; Type-II Keratin Kb7; Keratin 7, Type II; Cytokeratin 7; Keratin, Simple Epithelial Type I, K7; Type II Mesothelial Keratin K7; Cytokeratin-7; Keratin-7

Background

Gene Name: KRT7

NCBI Gene Entry: [3855](#)

UniProt Entry: [P08729](#)

Application Information

Molecular Weight: Predicted, 54 kDa, observed, 51 kDa

Clonality: Rabbit monoclonal antibody

Clone ID: 23GB2915

Species Reactivity: Human

Applications Tested: Western blotting (WB), flow cytometry (FCM), immunocytochemistry (IC), immunohistochemistry (IHC)

Immunogen

A synthesized peptide derived from human Cytokeratin 7

Isotype

Rabbit IgG

Storage Buffer

Supplied in PBS (pH 7.4) containing 50% glycerol, and 0.02% sodium azide.

Storage

Store at -20 °C for one year.

Recommended Dilutions

Western Blotting (WB): 1:2,000-1:10,000

Flow Cytometry (FCM): 1:2,000

Immunocytochemistry (IC): 1:100-1:1,000

Immunohistochemistry (IHC): 1:100-1:200

SUPPORT

SUPPORT@GENUINBIOTECH.COM
TEL: +1-540-855-7041

ORDERS

SALES@GENUINBIOTECH.COM
FAX: +1-540-855-7041

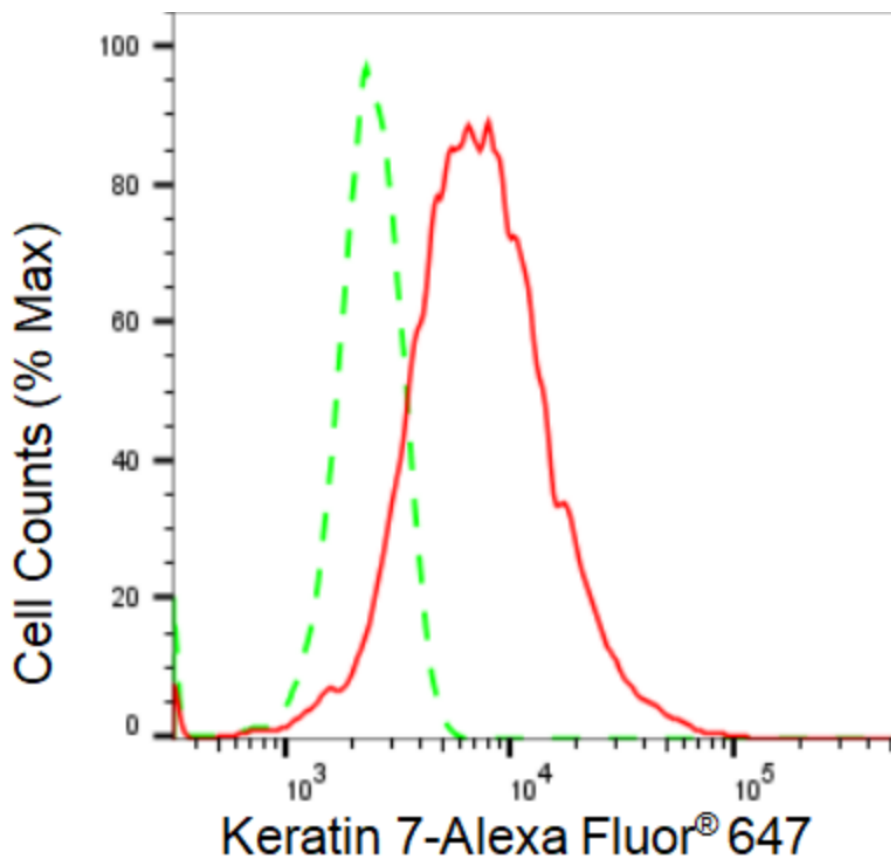
WWW.GENUINBIOTECH.COM

KD-Validated Anti-Keratin 7 Recombinant Rabbit Monoclonal Antibody

PAGE 2

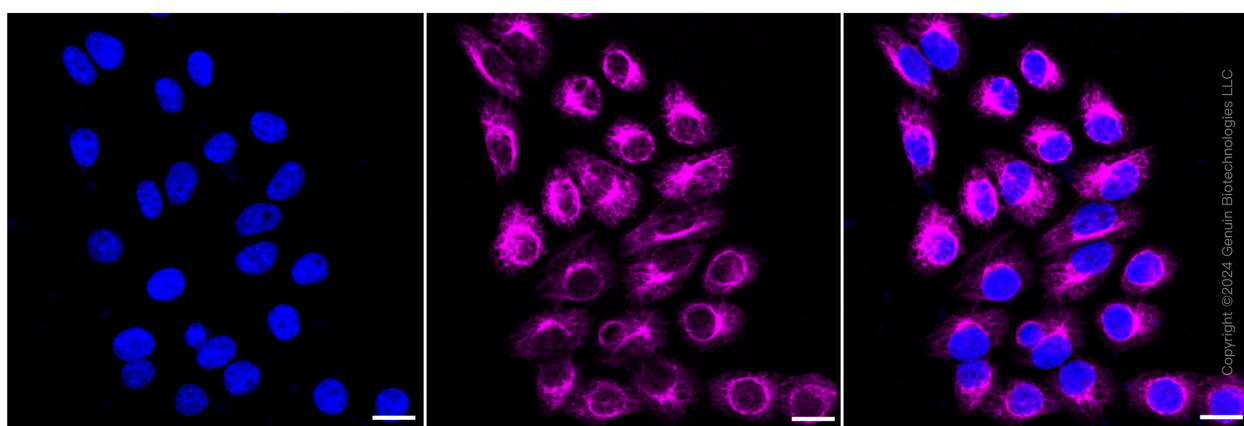
Note: This product is for research use only.

Validation Data



Copyright ©2024 Genuin Biotechnologies LLC

Flow cytometric analysis of Keratin 7 expression in HepG2 cells using Keratin 7 antibody (Cat#61269, 1:2,000). Green, isotype control; red, Keratin 7.



Copyright ©2024 Genuin Biotechnologies LLC

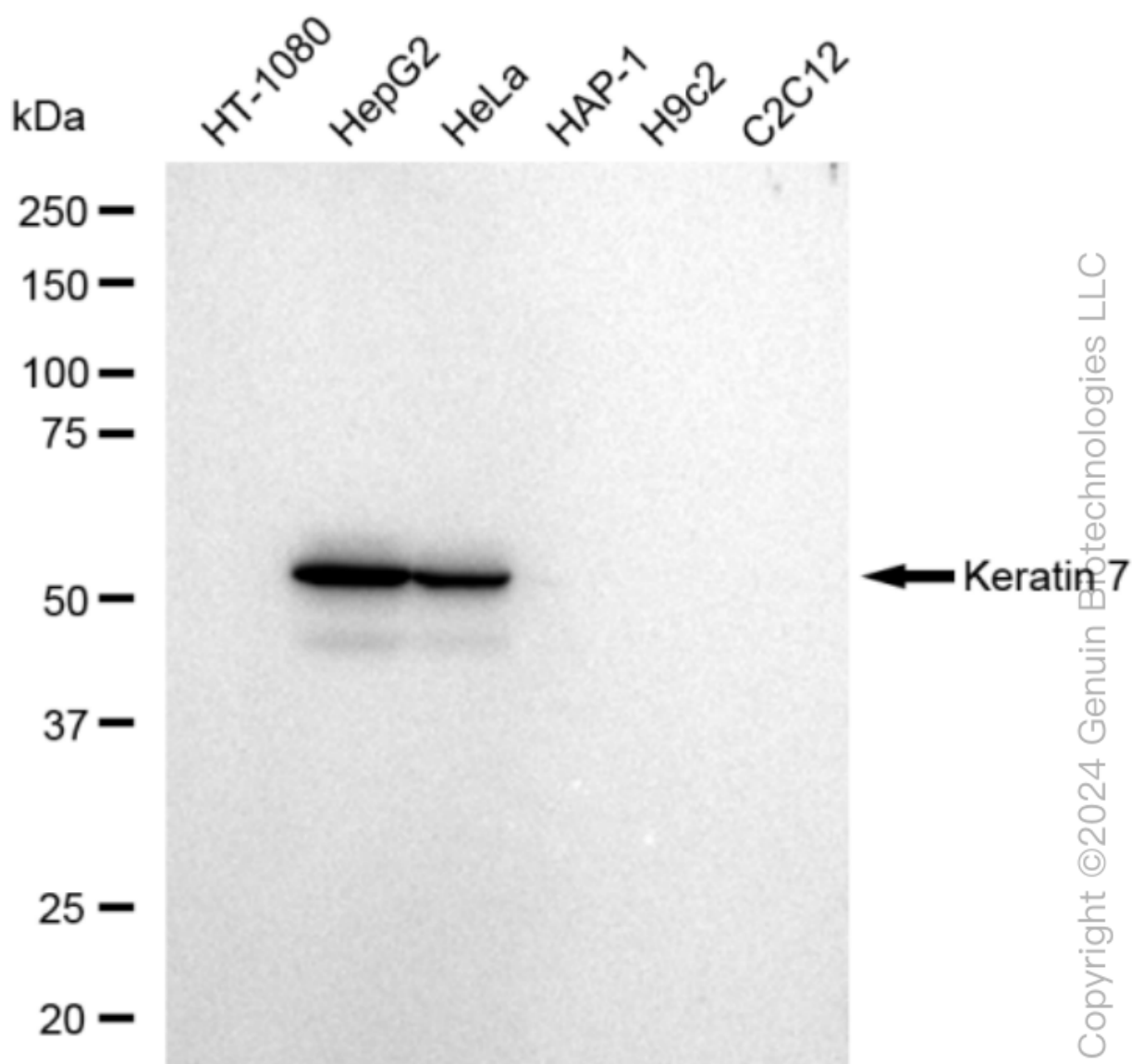
SUPPORT

SUPPORT@GENUINBIOTECH.COM
TEL: +1-540-855-7041

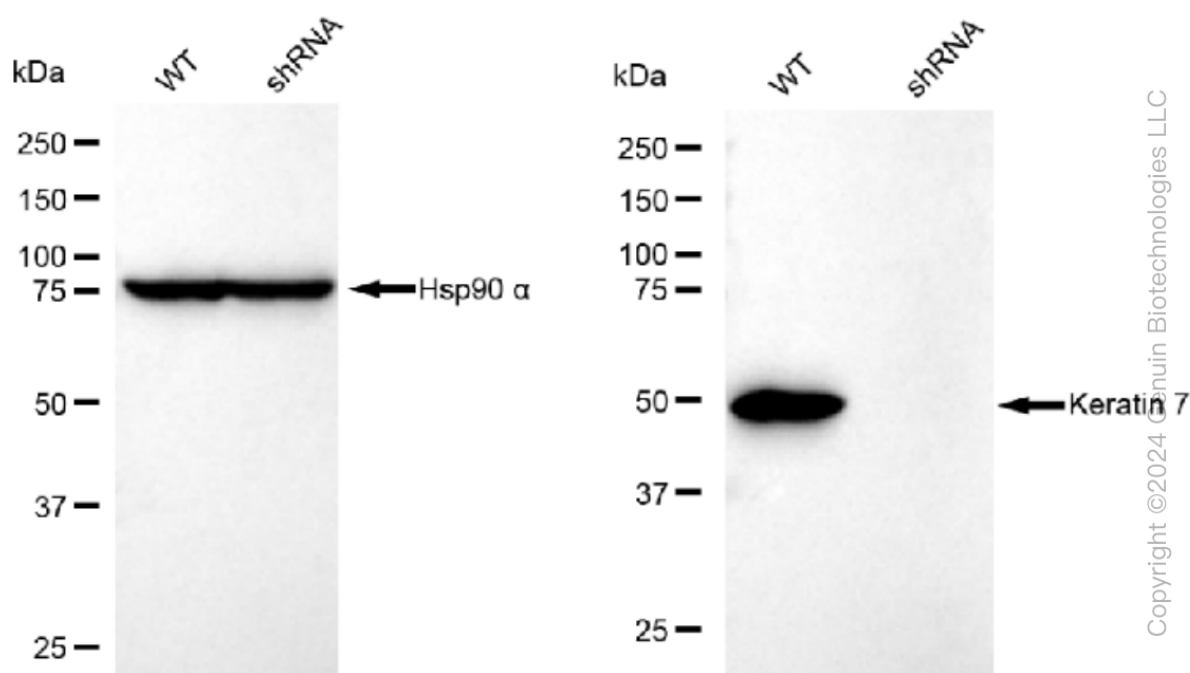
ORDERS

SALES@GENUINBIOTECH.COM
FAX: +1-540-855-7041

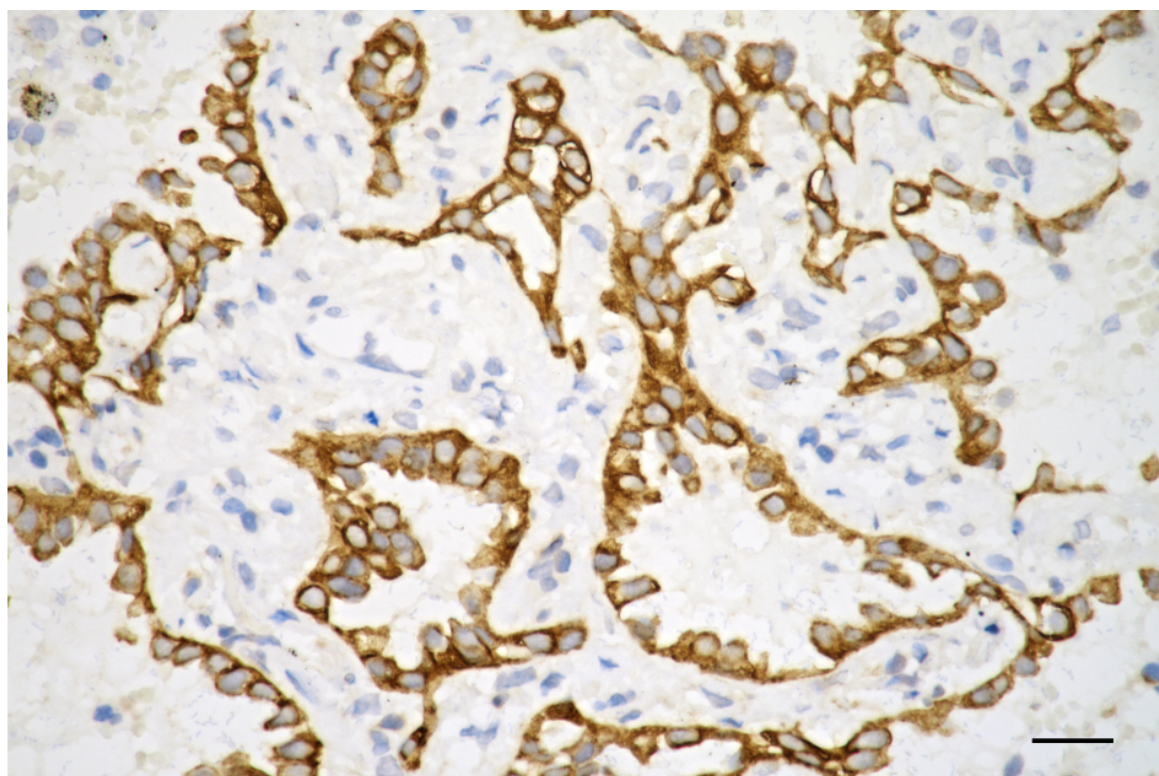
WWW.GENUINBIOTECH.COM



Western blotting analysis using anti-Keratin 7 antibody (Cat#61269). Total cell lysates (30 μ g) from various cell lines were loaded and separated by SDS-PAGE. The blot was incubated with anti-Keratin 7 antibody (Cat#61269, 1:10,000) and HRP-conjugated goat anti-rabbit secondary antibody (Cat#201, 1:20,000) respectively. Image was developed using FeQ™ ECL Substrate Kit (Cat#226).



Western blotting analysis using anti-Keratin 7 antibody (Cat#61269). Keratin 7 expression in wild type (WT) and Keratin 7 shRNA knockdown (KD) HeLa cells with 30 µg of total cell lysates. Hsp90 α serves as a loading control. The blot was incubated with anti-Keratin 7 antibody (Cat#61269, 1:5,000) and HRP-conjugated goat anti-rabbit secondary antibody (Cat#201, 1:20,000) respectively. Image was developed using FeQ™ ECL Substrate Kit (Cat#226).



KD-Validated Anti-Keratin 7 Recombinant Rabbit Monoclonal Antibody

PAGE 5

Immunohistochemistry was performed on paraffin-embedded human lung adenocarcinoma using anti-glial fibrillary acidic protein antibody (Cat#61269, 1:200). Antigen retrieval was done in sodium citrate buffer (pH 6.0). DAB was used for detection, with hematoxylin counterstaining. Images were acquired using a Nikon Ci-L Plus microscope (40× objective). Scale bar: 25 µm.

SUPPORT

SUPPORT@GENUINBIOTECH.COM
TEL: +1-540-855-7041

ORDERS

SALES@GENUINBIOTECH.COM
FAX: +1-540-855-7041

WWW.GENUINBIOTECH.COM