

KD-Validated Anti-PUS7 Mouse Monoclonal Antibody



Catalog #: 61271

Aliases

PUS7; Pseudouridine Synthase 7; Pseudouridylate Synthase 7 (Putative); Pseudouridylate Synthase 7 Homolog; FLJ20485; Pseudouridylate Synthase 7 Homolog (S. Cerevisiae); Pseudouridylate Synthase 7; EC 5.4.99.-; KIAA1897; IDDABS

Background

Gene Name: PUS7

NCBI Gene Entry: [54517](#)

UniProt Entry: [Q96PZ0](#)

Application Information

Molecular Weight: Predicted, 75 kDa; observed, 75 kDa

Clonality: Mouse monoclonal antibody

Clone ID: 25GB4125

Species Reactivity: Human

Applications Tested: Western blotting (WB), flow cytometry (FCM), immunocytochemistry (IC)

Immunogen

Recombinant protein of human PUS7

Isotype

Mouse IgG1

Storage Buffer

Supplied in PBS (pH 7.4) containing 50% glycerol, and 0.02% sodium azide.

Storage

Store at -20 °C for one year.

Recommended Dilutions

Western Blotting (WB): 1:500-1:2,500

Flow Cytometry (FCM): 1:2,000

Immunocytochemistry (IC): 1:100-1:1,000

Note: This product is for research use only.

SUPPORT

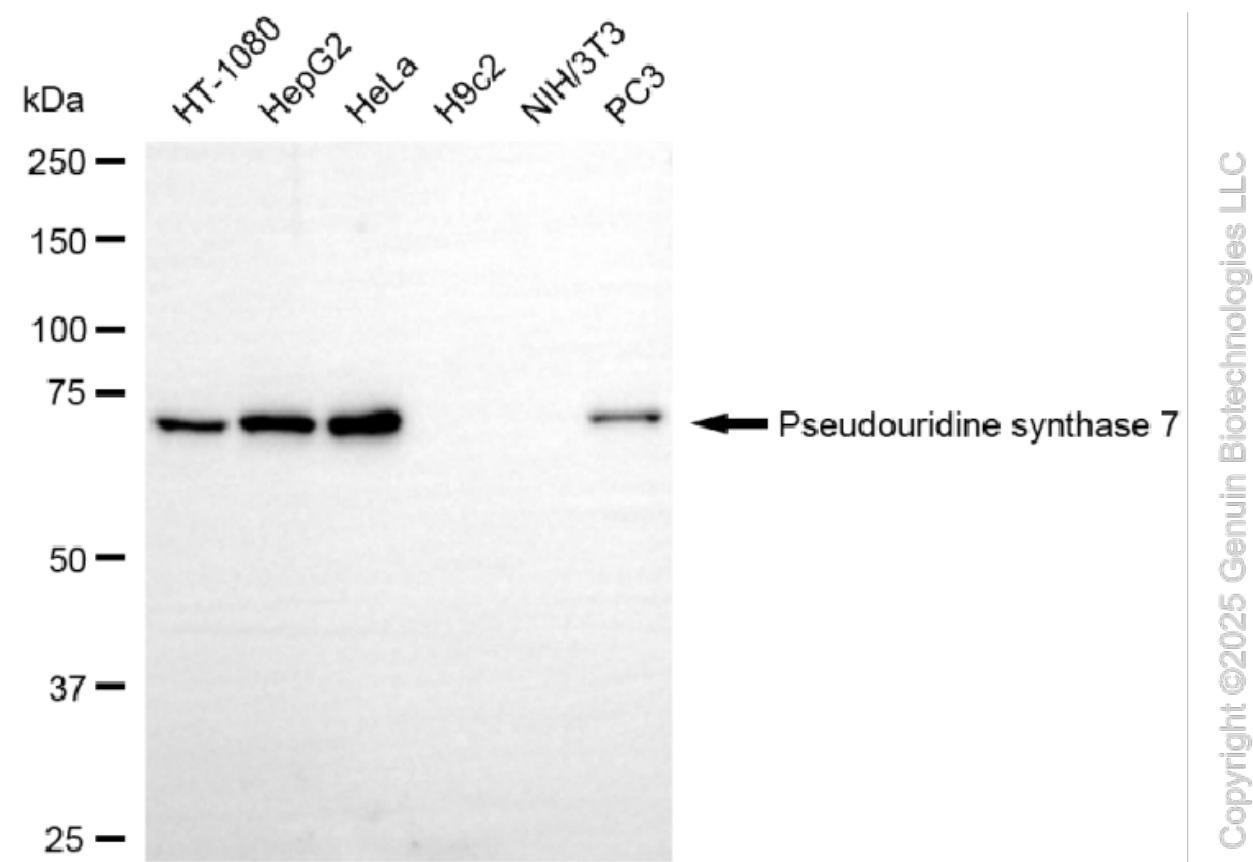
SUPPORT@GENUINBIOTECH.COM
TEL: +1-540-855-7041

ORDERS

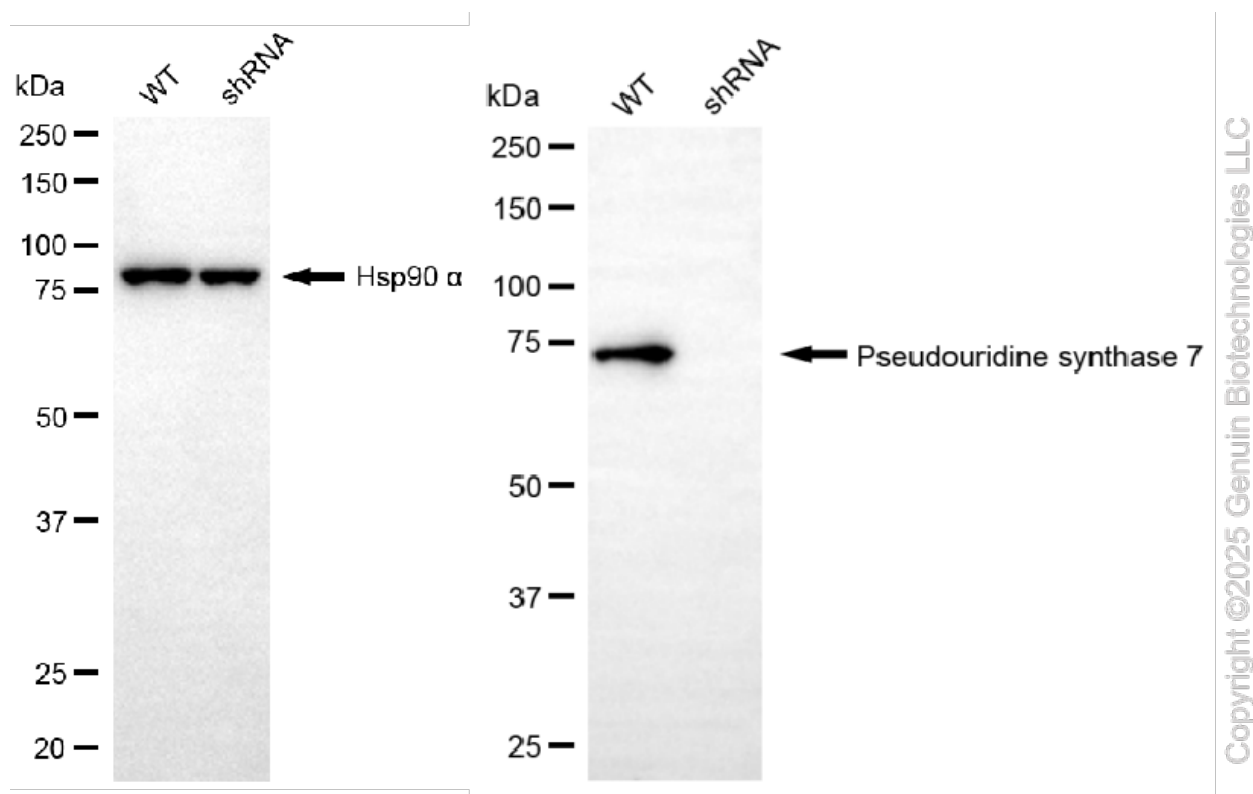
SALES@GENUINBIOTECH.COM
FAX: +1-540-855-7041

WWW.GENUINBIOTECH.COM

Validation Data

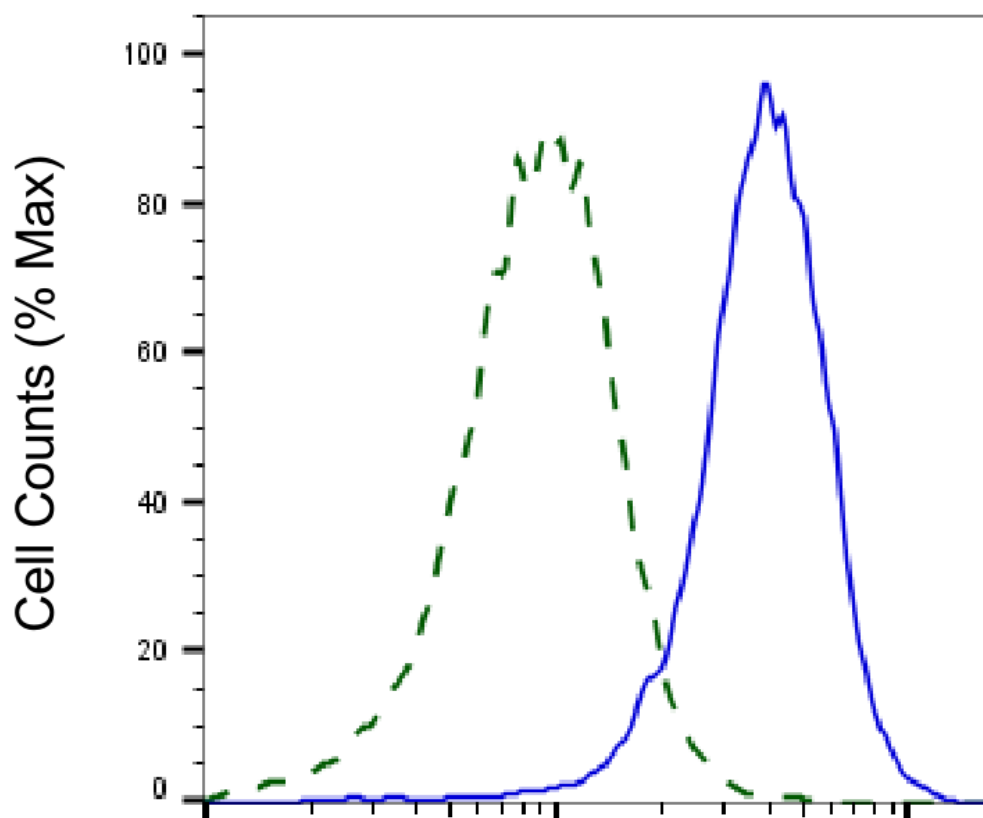


Western blotting analysis using anti-pseudouridine synthase 7 antibody (Cat#61271). Total cell lysates (30 μ g) from various cell lines were loaded and separated by SDS-PAGE. The blot was incubated with anti-pseudouridine synthase 7 antibody (Cat#61271, 1:2,500) and HRP-conjugated goat anti-mouse secondary antibody (Cat#101, 1:20,000) respectively. Image was developed using NaQ™ ECL Substrate Kit (Cat#716).



Western blotting analysis using anti-pseudouridine synthase 7 antibody (Cat#61271).

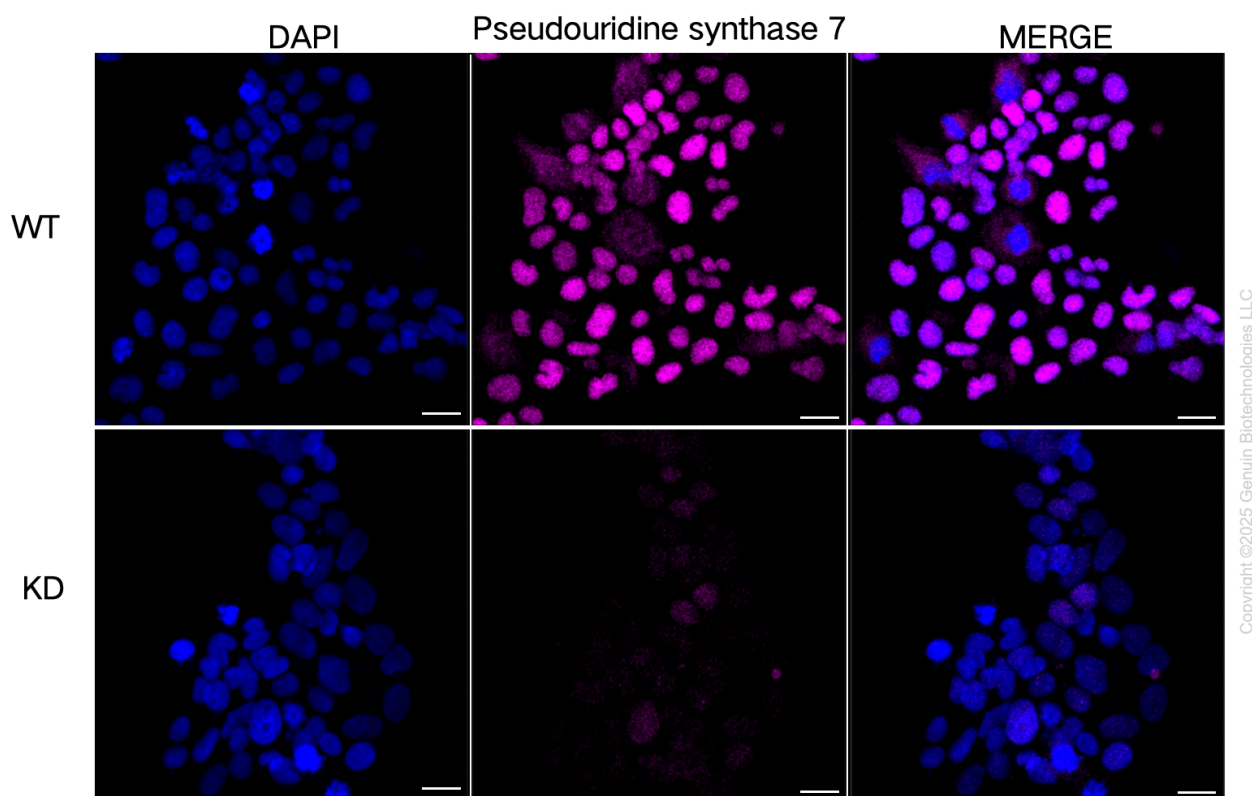
Pseudouridine synthase 7 expression in wild-type (WT) and pseudouridine synthase 7 (PUS7) shRNA knockdown (KD) HeLa cells with 20 µg of total cell lysates. Hsp90 α serves as a loading control. The blot was incubated with anti-pseudouridine synthase 7 antibody (Cat#61271, 1:2,500) and HRP-conjugated goat anti-mouse secondary antibody (Cat#101, 1:20,000) respectively. Image was developed using NaQ™ ECL Substrate Kit (Cat#716).



Copyright ©2025 Genuin Biotechnologies LLC

Pseudouridine synthase 7-Alexa Fluor® 647

Validation of Pseudouridine synthase 7 knockdown using flow cytometry. Wild-type(WT, Blue) and knockdown(KD, Green) HeLa cells were stained with anti-Pseudouridine synthase 7 antibody (Cat#61271, 1:2,000) and analyzed using BD flow cytometer.



Immunocytochemical staining of HeLa cells using anti-Pseudouridine synthase 7 antibody (Cat#61271, 1:1,000), Top panel: wild-type (WT); Bottom panel: Pseudouridine synthase 7 shRNA knockdown (KD). Nuclei were stained blue with DAPI; Pseudouridine synthase 7 was stained magenta with Alexa Fluor® 647. Scale bar, 20 μ m.