

# KD-Validated Anti-Estrogen receptor 2 Recombinant Rabbit Monoclonal Antibody



**Catalog #: 61273**

## Aliases

ESR2; Estrogen Receptor 2; NR3A2; Nuclear Receptor Subfamily 3 Group A Member 2; Estrogen Receptor Beta; Oestrogen Receptor Beta; ER-Beta; ER-BETA; ESTRB; Erb; Estrogen Receptor 2 (ER Beta); Estrogen Receptor Beta 2; Estrogen Receptor Beta 4; ESR-BETA; ER Beta; ESRB; ODG8; ERB

## Background

Gene Name: ESR2

NCBI Gene Entry: [2100](#)

UniProt Entry: [Q92731](#)

## Application Information

Molecular Weight: Predicted, 59 kDa; observed, 59 kDa

Clonality: Rabbit monoclonal antibody

Clone ID: 25GB2430

Species Reactivity: Human

Applications Tested: Western blotting (WB), flow cytometry (FCM), immunocytochemistry (IC)

## Immunogen

A synthesized peptide derived from human Estrogen Receptor beta

## Isotype

Rabbit IgG

## Storage Buffer

Supplied in PBS (pH 7.4) containing 50% glycerol, and 0.02% sodium azide.

## Storage

Store at -20 °C for one year.

## Recommended Dilutions

Western Blotting (WB): 1:1,000-1:5,000

Flow Cytometry (FCM): 1:2,000

Immunocytochemistry (IC): 1:100-1:1,000

---

### SUPPORT

SUPPORT@GENUINBIOTECH.COM  
TEL: +1-540-855-7041

### ORDERS

SALES@GENUINBIOTECH.COM  
FAX: +1-540-855-7041

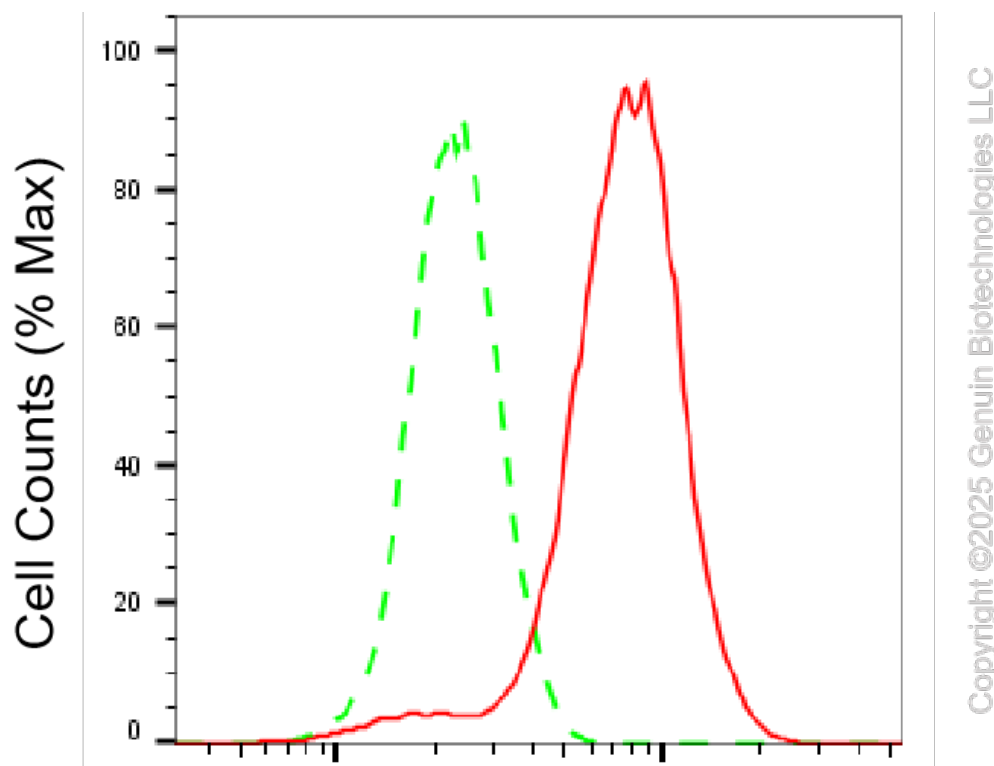
[WWW.GENUINBIOTECH.COM](http://WWW.GENUINBIOTECH.COM)

# KD-Validated Anti-Estrogen receptor 2 Recombinant Rabbit Monoclonal Antibody

PAGE 2

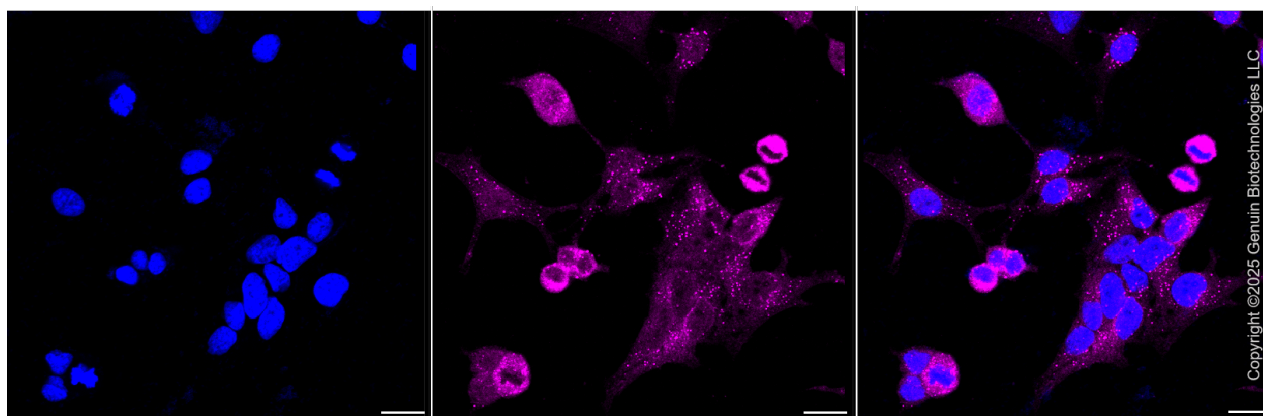
**Note:** This product is for research use only.

## Validation Data



## Estrogen receptor 2-Alexa Fluor® 647

Flow cytometric analysis of Estrogen receptor 2 expression in HeLa cells using Estrogen receptor 2 antibody (Cat#61273, 1:2,000). Green, isotype control; red, Estrogen receptor 2.



Immunocytochemical staining of HeLa cells with anti-Estrogen receptor 2 antibody (Cat#61273, 1:1,000). Nuclei were stained blue with DAPI; Estrogen receptor 2 was stained magenta with Alexa Fluor® 647. Images were taken using Leica stellaris 5. Protein abundance based on laser Intensity and smart gain: High. Scale bar, 20  $\mu$ m.

### SUPPORT

SUPPORT@GENUINBIOTECH.COM  
TEL: +1-540-855-7041

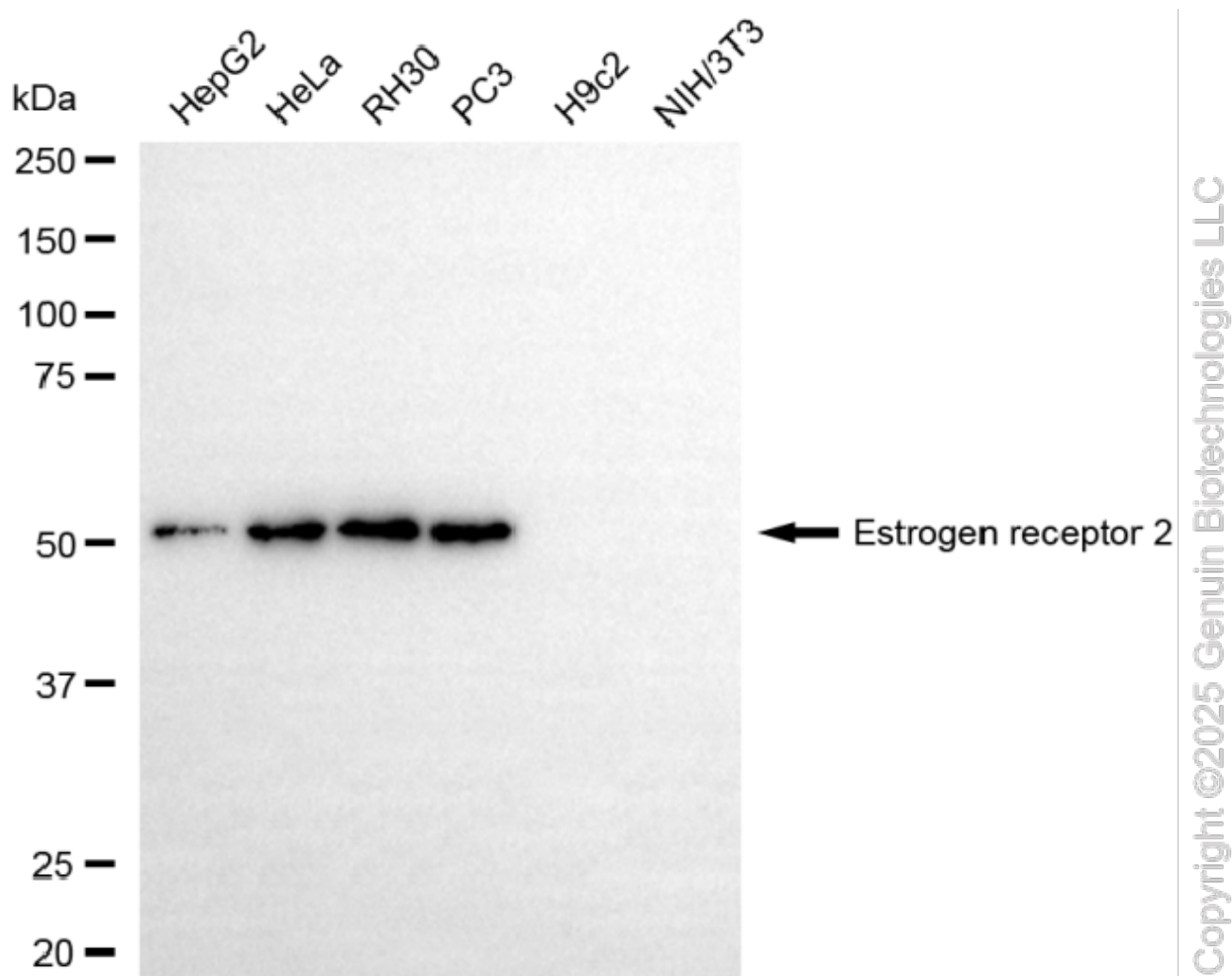
### ORDERS

SALES@GENUINBIOTECH.COM  
FAX: +1-540-855-7041

[WWW.GENUINBIOTECH.COM](http://WWW.GENUINBIOTECH.COM)

## KD-Validated Anti-Estrogen receptor 2 Recombinant Rabbit Monoclonal Antibody

PAGE 3



Western blotting analysis using anti-estrogen receptor 2 antibody (Cat#61273). Total cell lysates (30  $\mu$ g) from various cell lines were loaded and separated by SDS-PAGE. The blot was incubated with anti-estrogen receptor 2 antibody (Cat#61273, 1:5,000) and HRP-conjugated goat anti-rabbit secondary antibody (Cat#201, 1:20,000) respectively. Image was developed using NaQ™ ECL Substrate Kit (Cat#716).

### SUPPORT

SUPPORT@GENUINBIOTECH.COM  
TEL: +1-540-855-7041

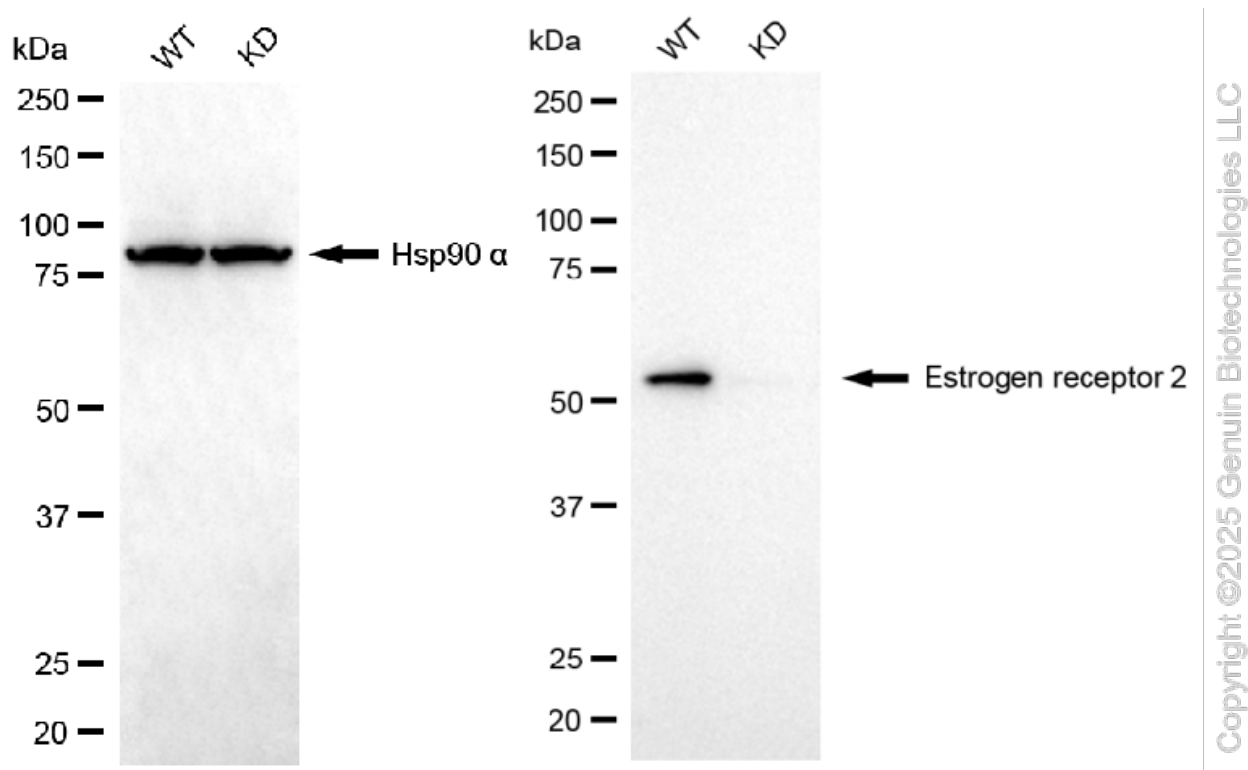
### ORDERS

SALES@GENUINBIOTECH.COM  
FAX: +1-540-855-7041

WWW.GENUINBIOTECH.COM

## KD-Validated Anti-Estrogen receptor 2 Recombinant Rabbit Monoclonal Antibody

PAGE 4



Western blotting analysis using anti-estrogen receptor 2 antibody (Cat#61273). Estrogen receptor 2 expression in wild-type (WT) and estrogen receptor 2 (ESR2) knockdown (KD) HeLa cells with 20 µg of total cell lysates. Hsp90 α serves as a loading control. The blot was incubated with anti-estrogen receptor 2 antibody (Cat#61273, 1:5,000) and HRP-conjugated goat anti-rabbit secondary antibody (Cat#201, 1:20,000) respectively. Image was developed using FeQ™ ECL Substrate Kit (Cat#226).

### SUPPORT

SUPPORT@GENUINBIOTECH.COM  
TEL: +1-540-855-7041

### ORDERS

SALES@GENUINBIOTECH.COM  
FAX: +1-540-855-7041

[WWW.GENUINBIOTECH.COM](http://WWW.GENUINBIOTECH.COM)