

# KD-Validated Anti-PPP3CA Recombinant Rabbit Monoclonal Antibody



**Catalog #: 61275**

## Aliases

PPP3CA; Protein Phosphatase 3 Catalytic Subunit Alpha; Calcineurin A Alpha; PPP2B; CALNA; CNA1; CAM-PRP Catalytic Subunit; EC 3.1.3.16; CNA Alpha; CALN; Protein Phosphatase 3 (Formerly 2B), Catalytic Subunit, Alpha Isoform (Calcineurin A Alpha); Serine/Threonine-Protein Phosphatase 2B Catalytic Subunit Alpha Isoform; Protein Phosphatase 3 (Formerly 2B), Catalytic Subunit, Alpha Isoform; Protein Phosphatase 2B, Catalytic Subunit, Alpha Isoform; Calmodulin-Dependent Calcineurin A Subunit Alpha Isoform; Protein Phosphatase 3, Catalytic Subunit, Alpha Isozyme; Protein Phosphatase 3 Catalytic Subunit Alpha Isozyme; ACCIID; CALNA1; IECEE1; DEE91; IECEE; CCN1; CNA

## Background

Gene Name: PPP3CA  
NCBI Gene Entry: [5530](#)  
UniProt Entry: [Q08209](#)

## Application Information

Molecular Weight: Predicted, 59 kDa, observed, 59 kDa  
Clonality: Rabbit monoclonal antibody  
Clone ID: 23GB2855  
Species Reactivity: Human, mouse  
Applications Tested: Western blotting (WB), flow cytometry (FCM), immunocytochemistry (IC)

## Immunogen

A synthesized peptide derived from human Calcineurin A

## Isotype

Rabbit IgG

## Storage Buffer

Supplied in PBS (pH 7.4) containing 50% glycerol, and 0.02% sodium azide.

## Storage

Store at -20 °C for one year.

## Recommended Dilutions

Western Blotting (WB): 1:1,000-1:5,000

---

### SUPPORT

SUPPORT@GENUINBIOTECH.COM  
TEL: +1-540-855-7041

### ORDERS

SALES@GENUINBIOTECH.COM  
FAX: +1-540-855-7041

[WWW.GENUINBIOTECH.COM](http://WWW.GENUINBIOTECH.COM)

## KD-Validated Anti-PPP3CA Recombinant Rabbit Monoclonal Antibody

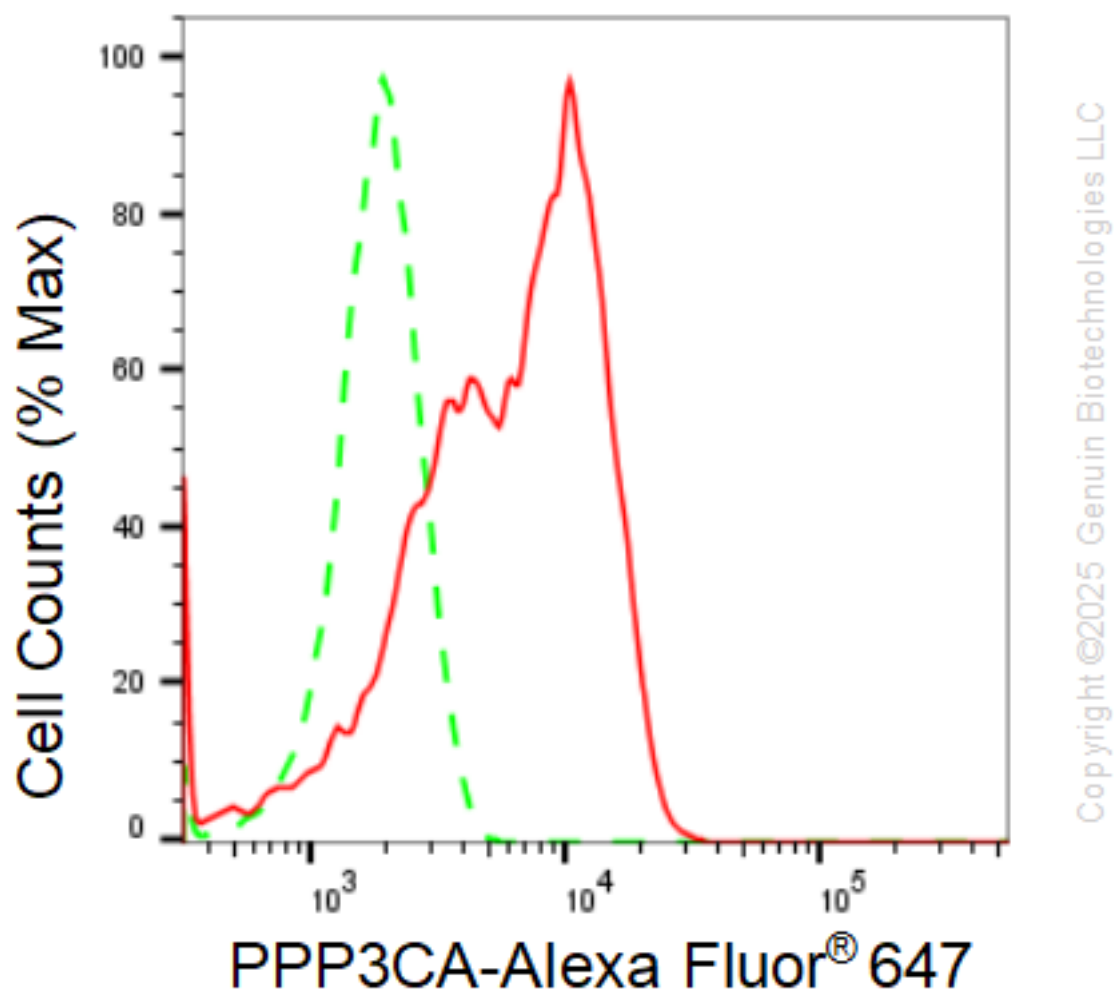
PAGE 2

Flow Cytometry (FCM): 1:2,000

Immunocytochemistry (IC): 1:100-1:1,000

**Note:** This product is for research use only.

### Validation Data



Flow cytometric analysis of PPP3CA expression in HeLa cells using anti-PPP3CA antibody (Cat#61275, 1:2,000). Green, isotype control; red, PPP3CA.

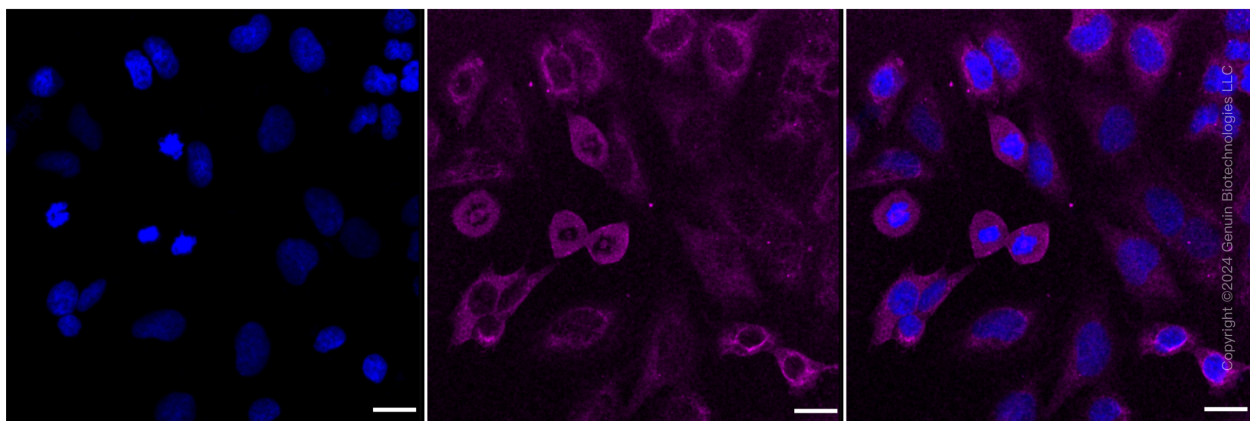
#### SUPPORT

SUPPORT@GENUINBIOTECH.COM  
TEL: +1-540-855-7041

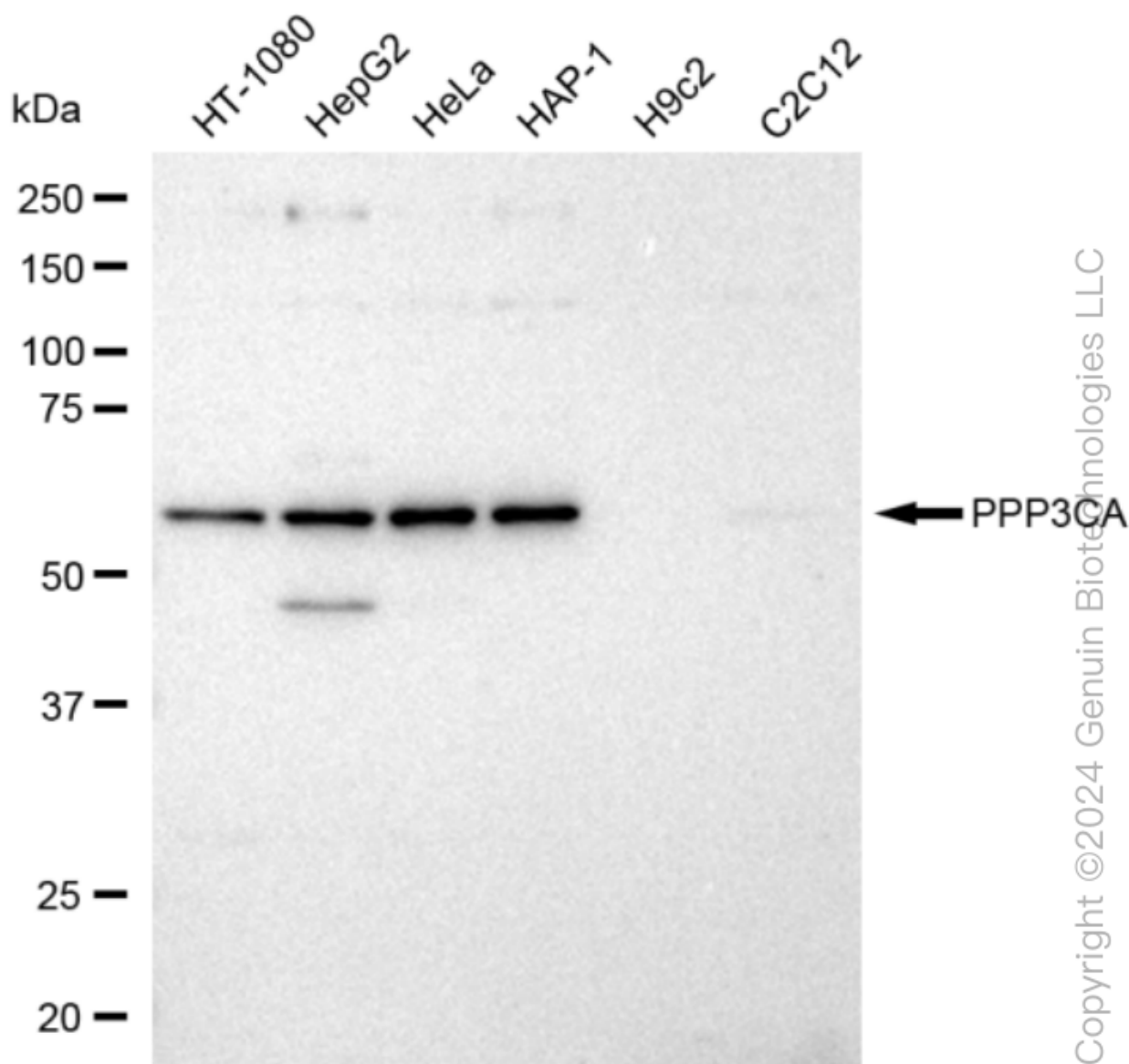
#### ORDERS

SALES@GENUINBIOTECH.COM  
FAX: +1-540-855-7041

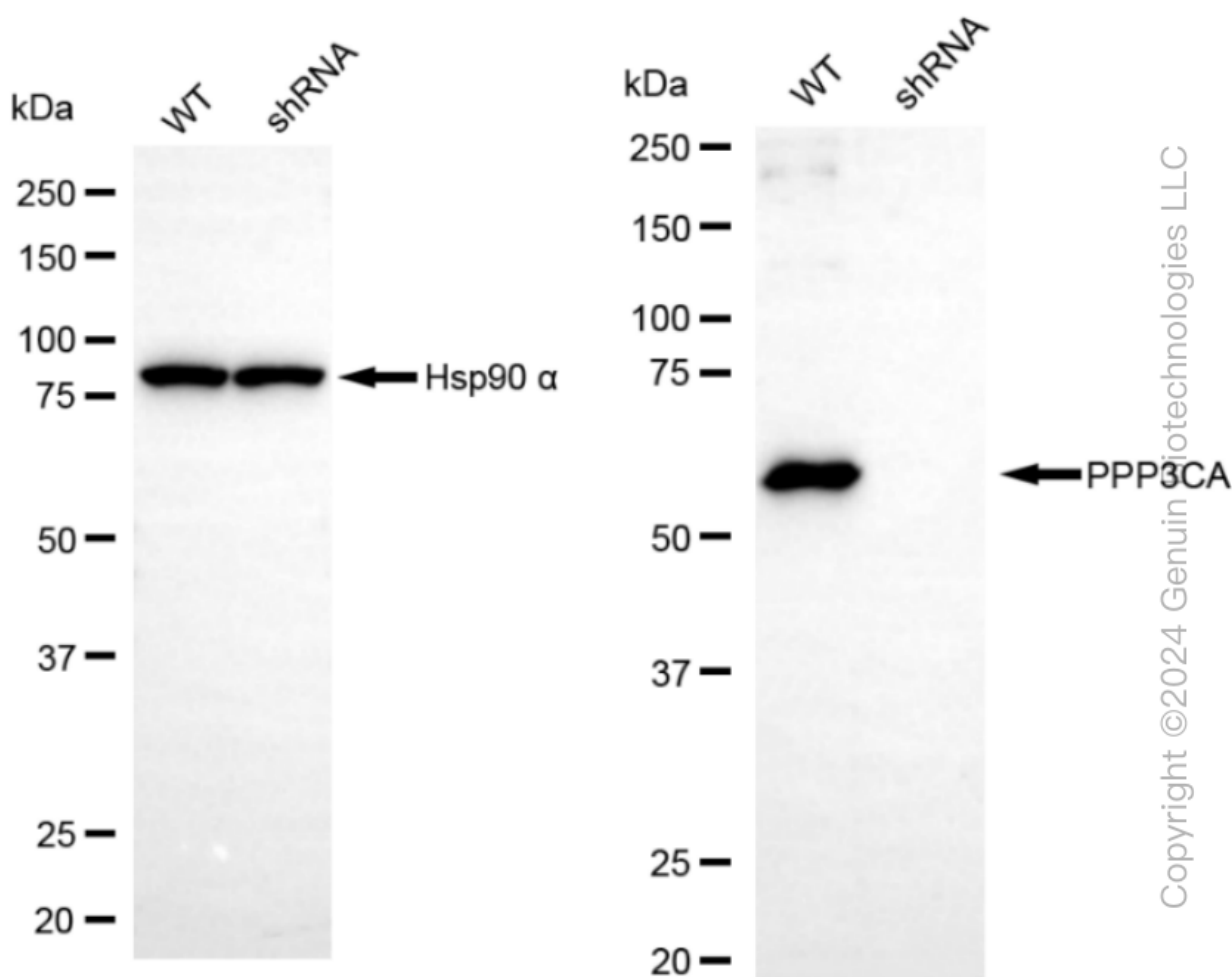
[WWW.GENUINBIOTECH.COM](http://WWW.GENUINBIOTECH.COM)



Immunocytochemical staining of HeLa cells with PPP3CA antibody (Cat#61275, 1:1,000). Nuclei were stained blue with DAPI; PPP3CA was stained magenta with Alexa Fluor® 647. Images were taken using Leica stellaris 5. Protein abundance based on laser Intensity and smart gain: Medium. Scale bar: 20  $\mu$ m.



Western blotting analysis using anti-PPP3CA antibody (Cat#61275). Total cell lysates (30 µg) from various cell lines were loaded and separated by SDS-PAGE. The blot was incubated with anti-PPP3CA antibody (Cat#61275, 1:5,000) and HRP-conjugated goat anti-rabbit secondary antibody (Cat#201, 1:20,000) respectively. Image was developed using FeQ™ ECL Substrate Kit (Cat#226). PPP3CA, protein phosphatase 3 catalytic subunit alpha.



Western blotting analysis using anti-PPP3CA antibody (Cat#61275). PPP3CA expression in wild type (WT) and PPP3CA shRNA knockdown (KD) HeLa cells with 30 µg of total cell lysates. β-Tubulin serves as a loading control. The blot was incubated with anti-PPP3CA antibody (Cat#61275, 1:5,000) and HRP-conjugated goat anti-rabbit secondary antibody (Cat#201, 1:20,000) respectively. Image was developed using FeQ™ ECL Substrate Kit (Cat#226).