

KD-Validated Anti-IQGAP1 Recombinant Rabbit Monoclonal Antibody



Catalog #: 61278

Aliases

IQGAP1; IQ Motif Containing GTPase Activating Protein 1; P195; HUMORFA01; KIAA0051; SAR1; Ras GTPase-Activating-Like Protein IQGAP1; RasGAP-Like With IQ Motifs

Background

Gene Name: IQGAP1

NCBI Gene Entry: [8826](#)

UniProt Entry: [P46940](#)

Application Information

Molecular Weight: Predicted, 189 kDa, observed, 195 kDa

Clonality: Rabbit monoclonal antibody

Clone ID: 25GB2050

Species Reactivity: Human, mouse, rat

Applications Tested: Western blotting (WB), flow cytometry (FCM), immunocytochemistry (IC)

Immunogen

A synthesized peptide derived from human IQGAP1

Isotype

Rabbit IgG

Storage Buffer

Supplied in PBS (pH 7.4) containing 50% glycerol, and 0.02% sodium azide.

Storage

Store at -20 °C for one year.

Recommended Dilutions

Western blotting (WB): 1:1,000-1:5,000

Flow Cytometry (FCM): 1:2,000

Immunocytochemistry (IC): 1:100-1:1,000

Note: This product is for research use only.

Validation Data

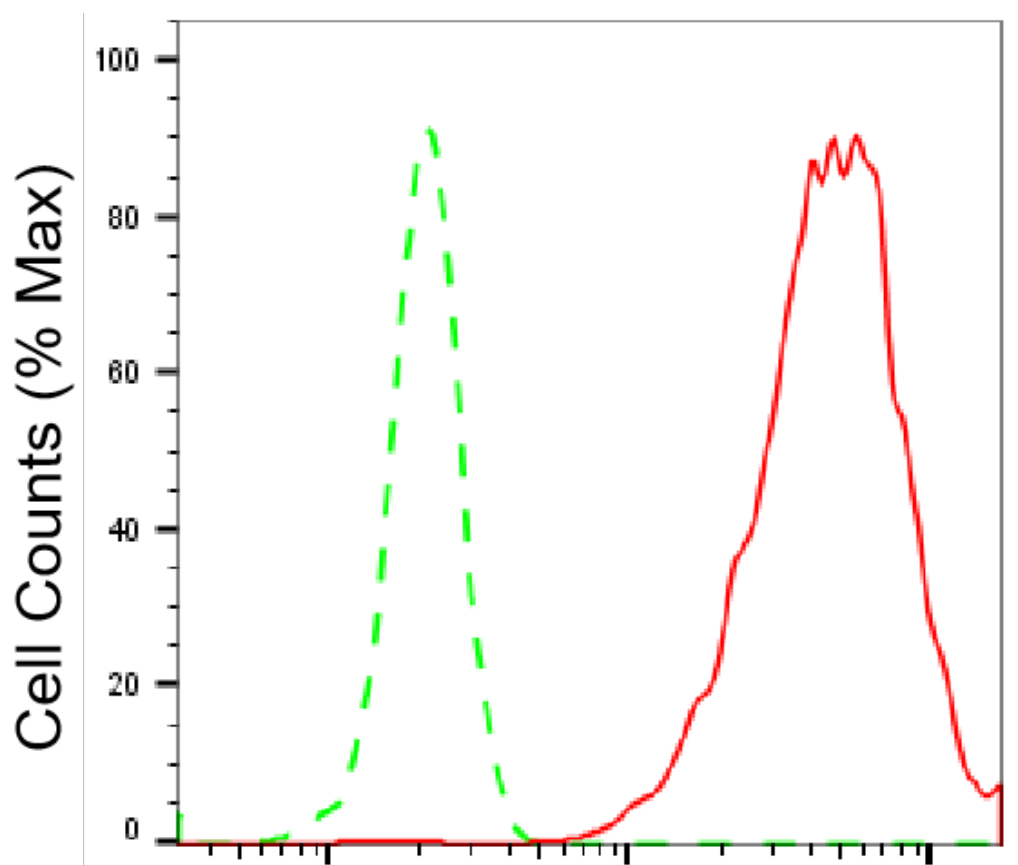
SUPPORT

SUPPORT@GENUINBIOTECH.COM
TEL: +1-540-855-7041

ORDERS

SALES@GENUINBIOTECH.COM
FAX: +1-540-855-7041

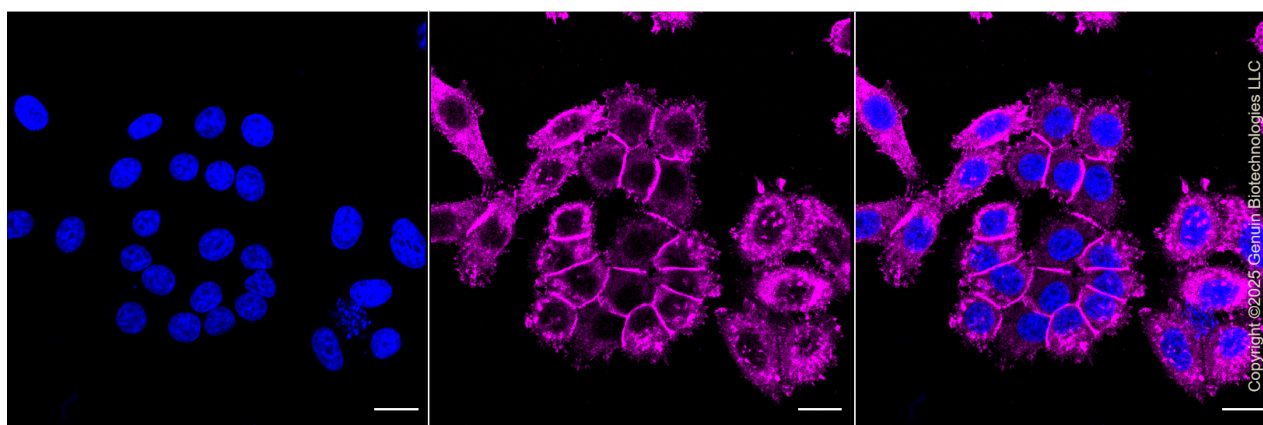
WWW.GENUINBIOTECH.COM



Copyright ©2025 Genuin Biotechnologies LLC

IQGAP1-Alexa Fluor® 647

Flow cytometric analysis of IQGAP1 expression in HepG2 cells using IQGAP1 antibody (Cat#61278, 1:2,000). Green, isotype control; red, IQGAP1.



Immunocytochemical staining of HepG2 cells with IQGAP1 antibody (Cat#61278, 1:1,000). Nuclei were stained blue with DAPI; IQGAP1 was stained magenta with Alexa Fluor® 647. Images were taken using Leica stellaris 5. Protein abundance based on laser Intensity and smart gain: High. Scale bar, 20 μm.

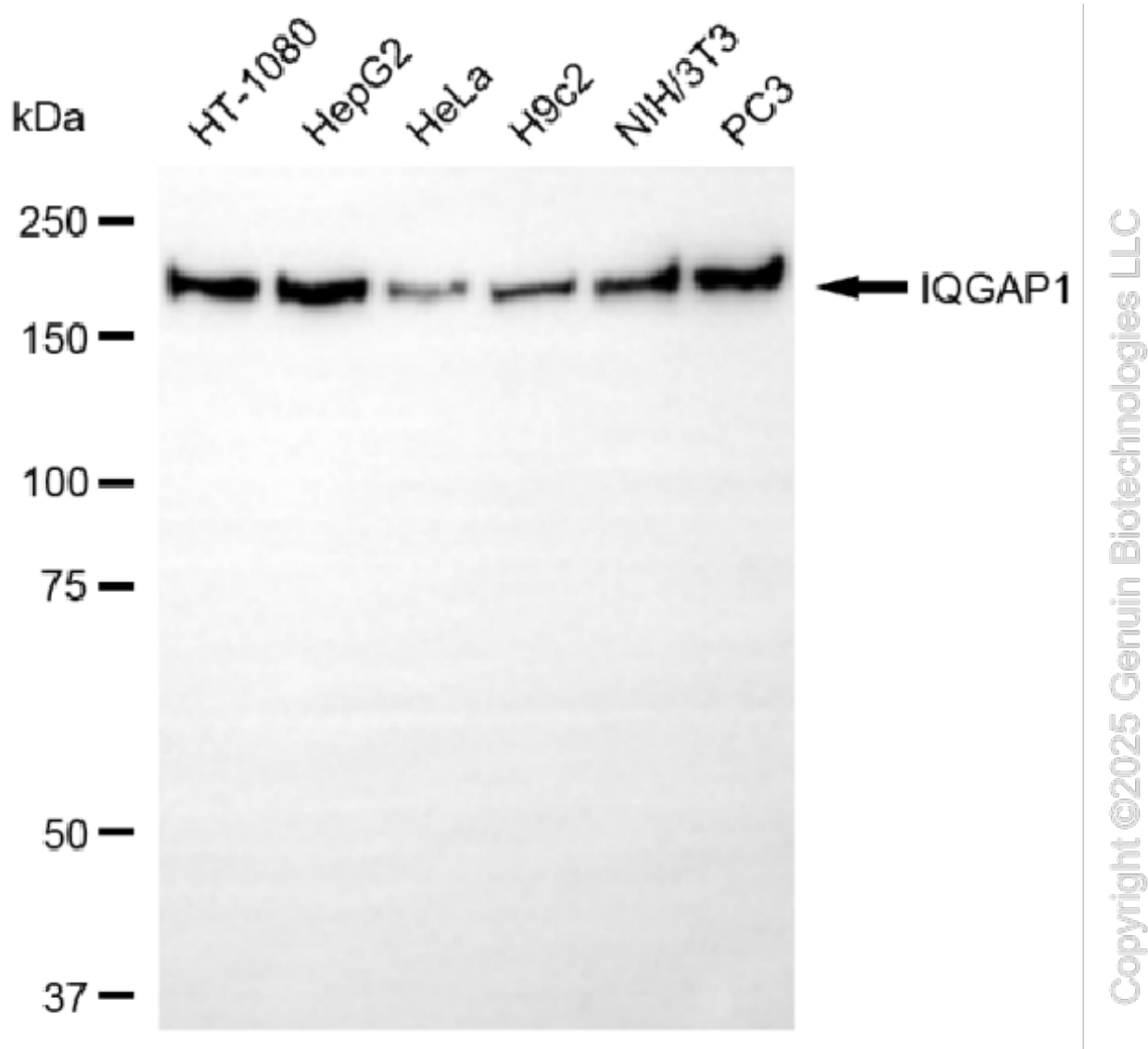
SUPPORT

SUPPORT@GENUINBIOTECH.COM
TEL: +1-540-855-7041

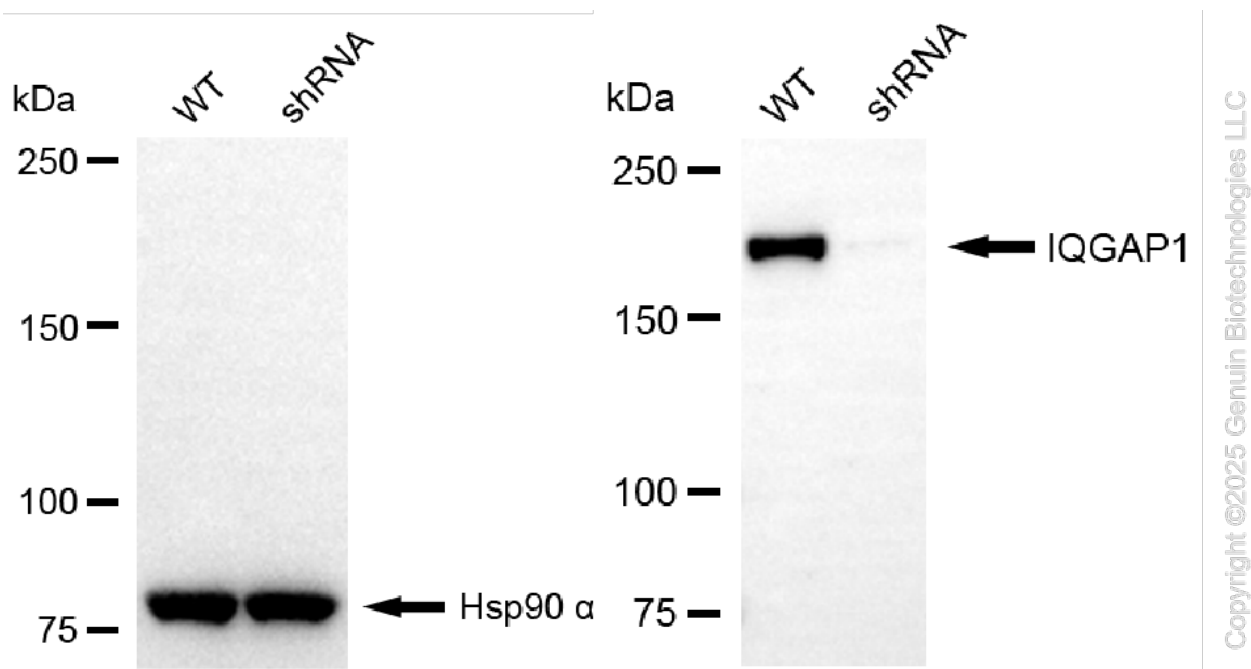
ORDERS

SALES@GENUINBIOTECH.COM
FAX: +1-540-855-7041

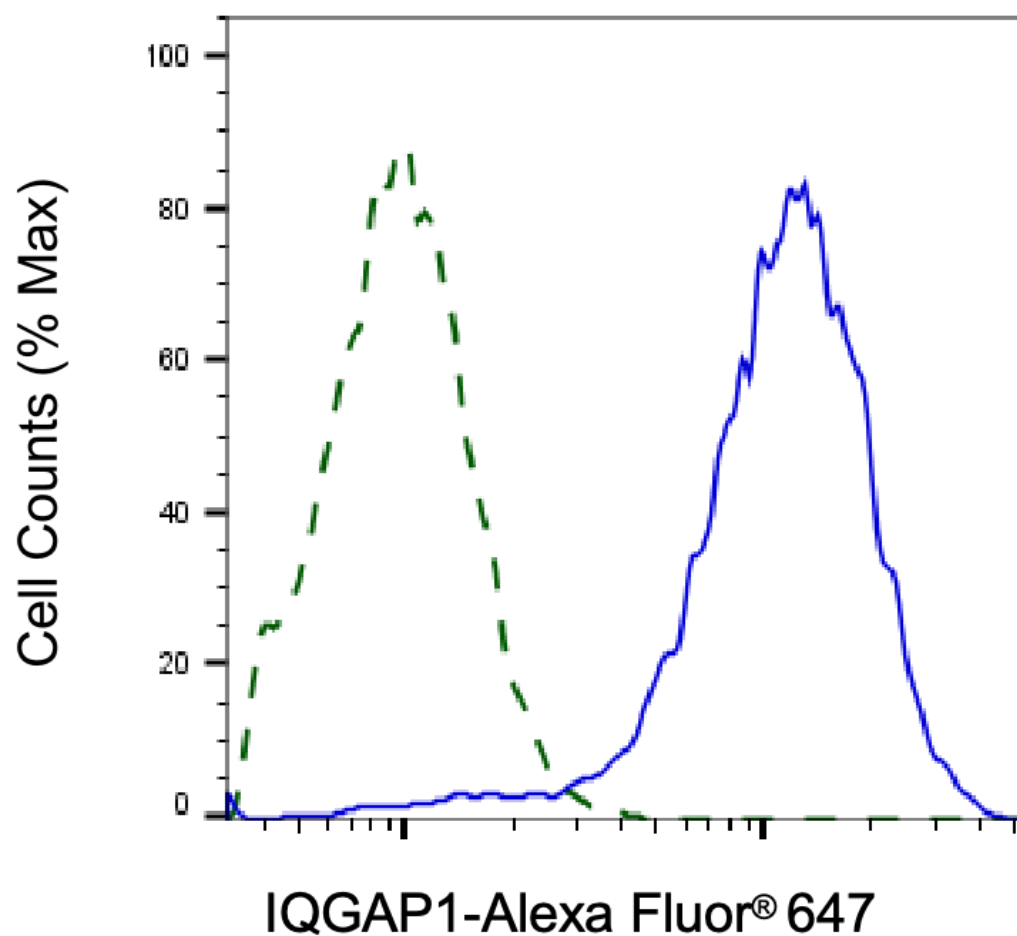
WWW.GENUINBIOTECH.COM



Western blotting analysis using anti-IQGAP1 antibody (Cat#61278). Total cell lysates (30 µg) from various cell lines were loaded and separated by SDS-PAGE. The blot was incubated with anti-IQGAP1 antibody (Cat#61278, 1:5,000) and HRP-conjugated goat anti rabbit secondary antibody (Cat#201, 1:20,000) respectively. Image was developed using NaQ™ ECL Substrate Kit (Cat#716).

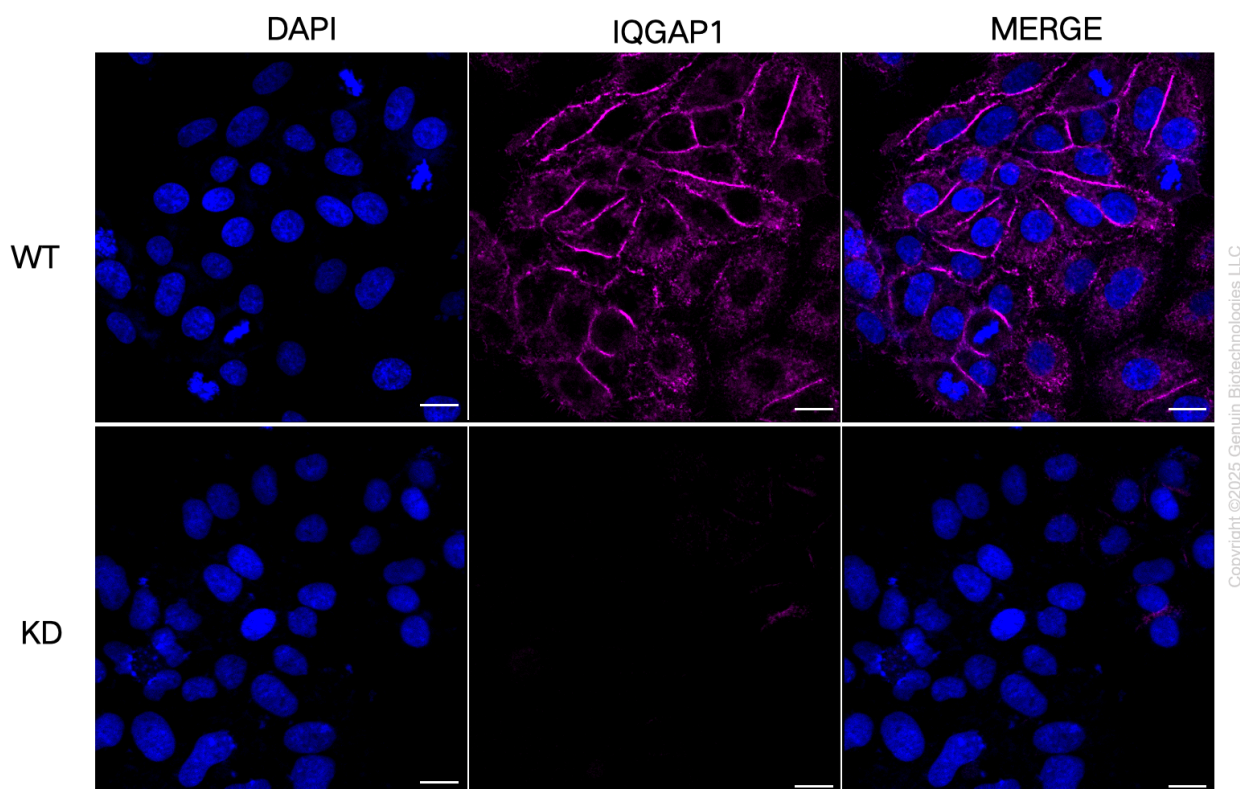


Western blotting analysis using anti-IQGAP1 antibody (Cat#61278). IQGAP1 expression in wild-type (WT) and IQGAP1 shRNA knockdown (KD) HepG2 cells with 20 μ g of total cell lysates. Hsp90 α serves as a loading control. The blot was incubated with anti-IQGAP1 antibody (Cat#61278, 1:5,000) and HRP-conjugated goat anti-rabbit secondary antibody (Cat#201, 1:20,000) respectively. Image was developed using NaQ™ ECL Substrate Kit (Cat#716).



Copyright ©2025 Genuin Biotechnologies LLC

Validation of IQGAP1 knockdown using flow cytometry. Wild-type(WT, Blue) and knockdown(KD, Green) HepG2 cells were stained with anti-IQGAP1 antibody (Cat#61278, 1:2,000) and analyzed using BD flow cytometer.



Immunocytochemical staining of HepG2 cells using anti-IQGAP1 antibody (Cat#61278, 1:1,000), Top panel: wild-type (WT); Bottom panel: IQGAP1 shRNA knockdown (KD). Nuclei were stained blue with DAPI; IQGAP1 was stained magenta with Alexa Fluor® 647. Scale bar, 20 μ m.