

KD-Validated Anti-Mannose Receptor (CD206) Recombinant Rabbit Monoclonal Antibody



Catalog #: 61279

Aliases

MRC1; Mannose Receptor C-Type 1; CLEC13DL; CLEC13D; BA541I19.1; MRC1L1; CD206; Macrophage Mannose Receptor 1-Like Protein 1; C-Type Lectin Domain Family 13 Member D; Mannose Receptor, C Type 1-Like 1; Macrophage Mannose Receptor ; Human Mannose Receptor; MMR; HMR; C-Type Lectin Domain Family 13 Member D-Like; Macrophage Mannose Receptor; Mannose Receptor, C Type 1; CD206 Antigen

Background

Gene Name: MRC1

NCBI Gene Entry: [4360](#)

UniProt Entry: [P22897](#)

Application Information

Molecular Weight: Predicted, 166 kDa, observed, 166 kDa

Clonality: Rabbit monoclonal antibody

Clone ID: 25GB2060

Species Reactivity: Human, mouse, rat

Applications Tested: Western blotting (WB), flow cytometry (FCM), immunocytochemistry (IC), immunohistochemistry (IHC)

Immunogen

A synthesized peptide derived from human MRC1

Isotype

Rabbit IgG

Storage Buffer

Supplied in PBS (pH 7.4) containing 50% glycerol, and 0.02% sodium azide.

Storage

Store at -20 °C for one year.

Recommended Dilutions

Western Blotting (WB): 1:1,000-1:5,000

Flow Cytometry (FCM): 1:2,000

Immunocytochemistry (IC): 1:100-1:1,000

SUPPORT

SUPPORT@GENUINBIOTECH.COM
TEL: +1-540-855-7041

ORDERS

SALES@GENUINBIOTECH.COM
FAX: +1-540-855-7041

WWW.GENUINBIOTECH.COM

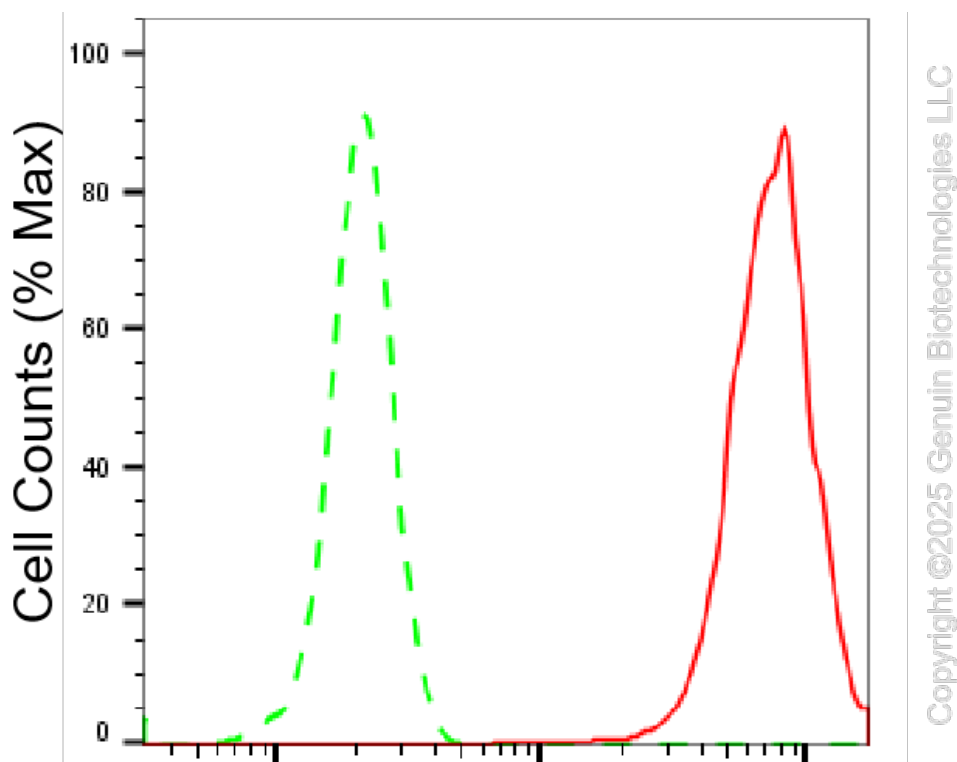
KD-Validated Anti-Mannose Receptor (CD206) Recombinant Rabbit Monoclonal Antibody

PAGE 2

Immunohistochemistry (IHC): 1:100-1:200

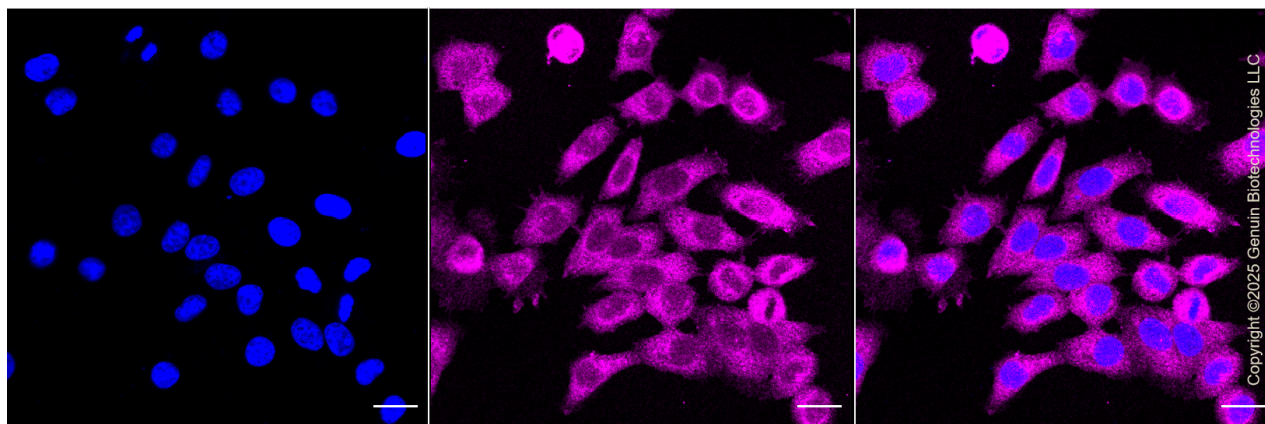
Note: This product is for research use only.

Validation Data



Mannose Receptor (CD206)-Alexa Fluor® 647

Flow cytometric analysis of Mannose Receptor (CD206) expression in HepG2 cells using Mannose Receptor (CD206) antibody (Cat#61279, 1:2,000). Green, isotype control; red, Mannose Receptor (CD206).



Immunocytochemical staining of HepG2 cells with Mannose Receptor (CD206) antibody

SUPPORT

SUPPORT@GENUINBIOTECH.COM
TEL: +1-540-855-7041

ORDERS

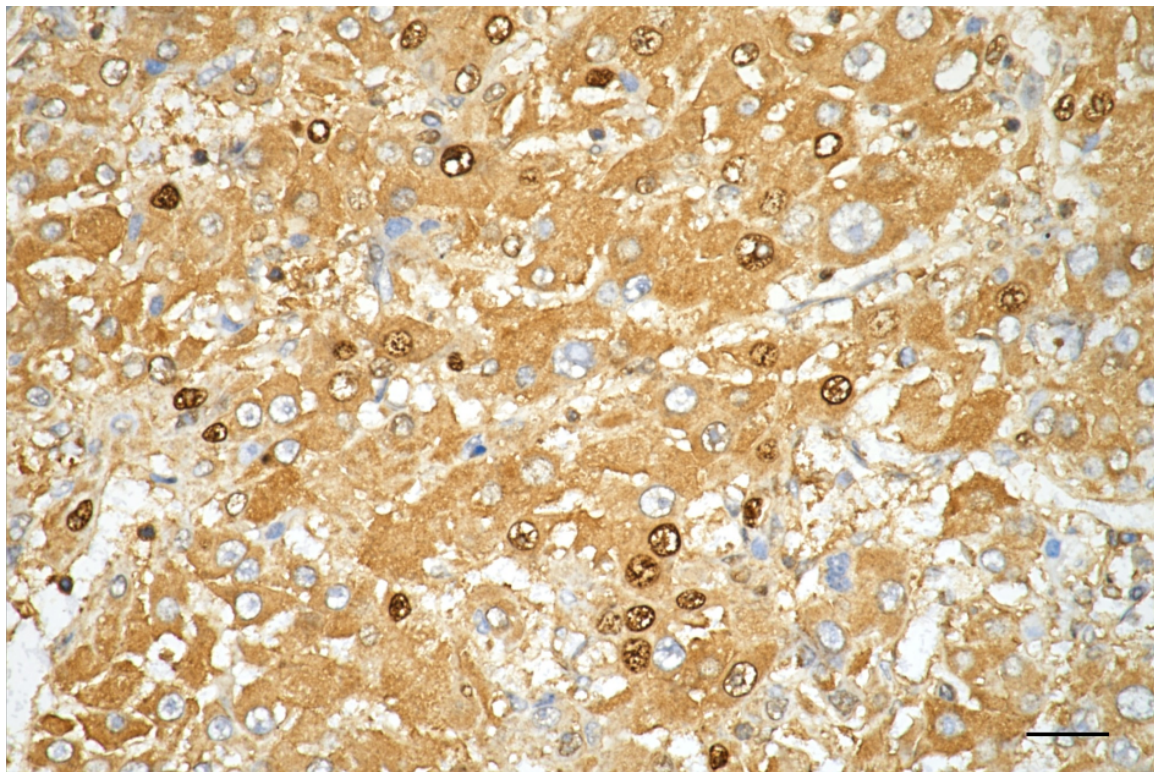
SALES@GENUINBIOTECH.COM
FAX: +1-540-855-7041

WWW.GENUINBIOTECH.COM

KD-Validated Anti-Mannose Receptor (CD206) Recombinant Rabbit Monoclonal Antibody

PAGE 3

(Cat#61279, 1:1,000). Nuclei were stained blue with DAPI; Mannose Receptor (CD206) was stained magenta with Alexa Fluor® 647. Images were taken using Leica stellaris 5. Protein abundance based on laser Intensity and smart gain: High. Scale bar, 20 μ m.



Copyright ©2025 Genuin Biotechnologies LLC

Immunohistochemistry was performed on paraffin-embedded human hepatocarcinoma using anti-mannose receptor (CD206) antibody (Cat#61279, 1:200). Antigen retrieval was done in sodium citrate buffer (pH 6.0). DAB was used for detection, with hematoxylin counterstaining. Images were acquired using a Nikon Ci-L Plus microscope (40 \times objective). Scale bar: 25 μ m.

SUPPORT

SUPPORT@GENUINBIOTECH.COM
TEL: +1-540-855-7041

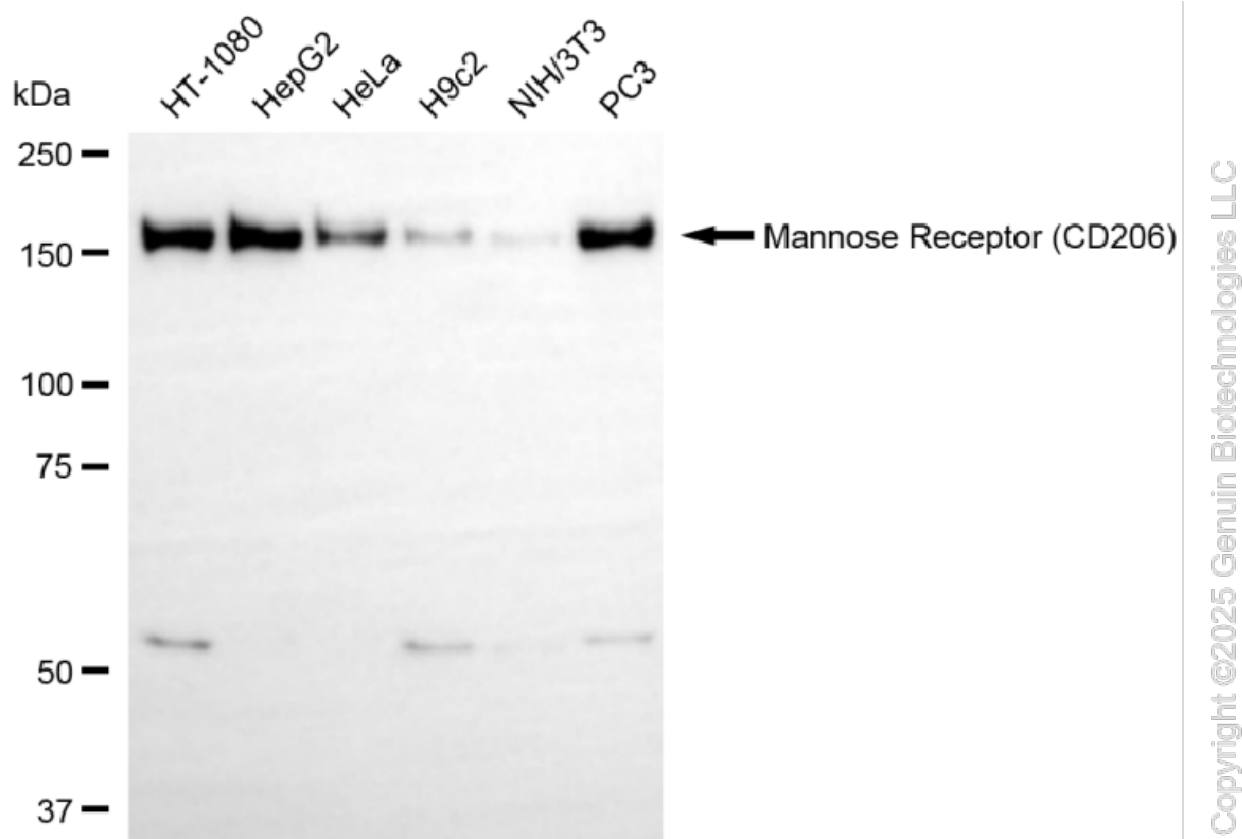
ORDERS

SALES@GENUINBIOTECH.COM
FAX: +1-540-855-7041

WWW.GENUINBIOTECH.COM

KD-Validated Anti-Mannose Receptor (CD206) Recombinant Rabbit Monoclonal Antibody

PAGE 4



Western blotting analysis using anti-mannose receptor (CD206) antibody (Cat#61279). Total cell lysates (30 µg) from various cell lines were loaded and separated by SDS-PAGE. The blot was incubated with anti-mannose receptor (CD206) antibody (Cat#61279, 1:5,000) and HRP-conjugated goat anti rabbit secondary antibody (Cat#201, 1:20,000) respectively. Image was developed using NaQ™ ECL Substrate Kit (Cat#716).

SUPPORT

SUPPORT@GENUINBIOTECH.COM
TEL: +1-540-855-7041

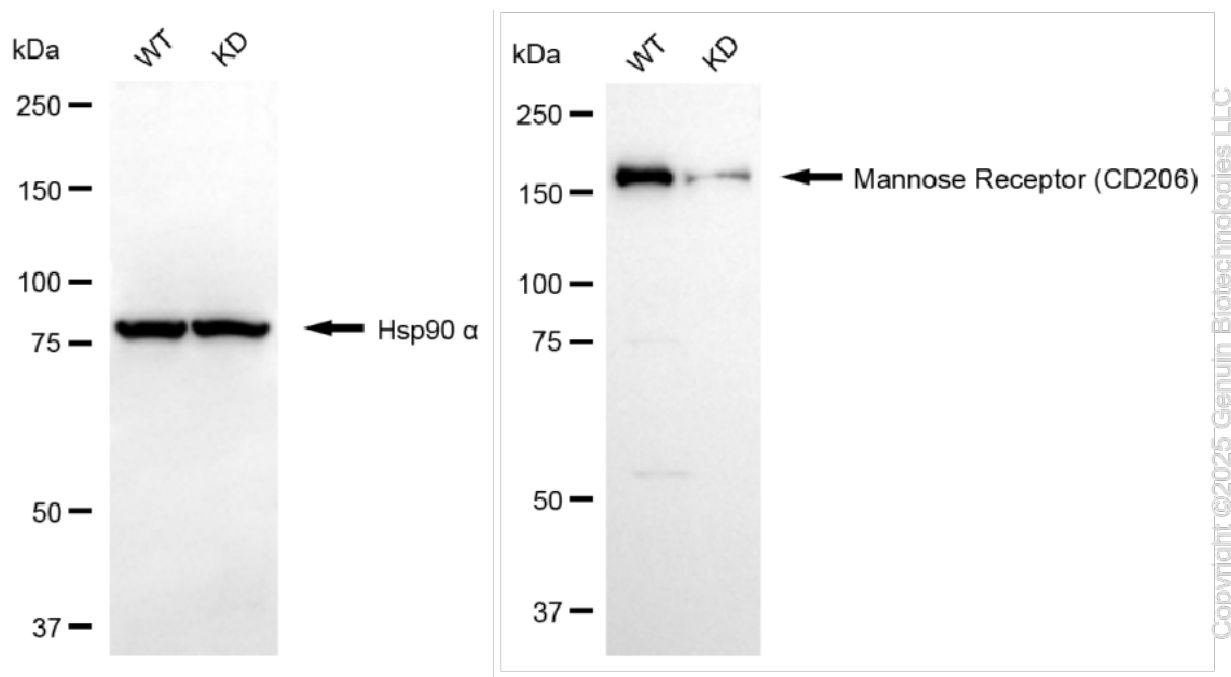
ORDERS

SALES@GENUINBIOTECH.COM
FAX: +1-540-855-7041

WWW.GENUINBIOTECH.COM

KD-Validated Anti-Mannose Receptor (CD206) Recombinant Rabbit Monoclonal Antibody

PAGE 5



Western blotting analysis using anti-mannose receptor (CD206) antibody (Cat#61279). Mannose receptor (CD206) expression in wild-type (WT) and MRC1 knockdown (KD) HeLa cells with 20 μ g of total cell lysates. Hsp90 α serves as a loading control. The blot was incubated with anti-mannose receptor (CD206) antibody (Cat#61279, 1:5,000) and HRP-conjugated goat anti-rabbit secondary antibody (Cat#201, 1:20,000) respectively. Image was developed using NaQ™ ECL Substrate Kit (Cat#716).

SUPPORT

SUPPORT@GENUINBIOTECH.COM
TEL: +1-540-855-7041

ORDERS

SALES@GENUINBIOTECH.COM
FAX: +1-540-855-7041

WWW.GENUINBIOTECH.COM