

# KD-Validated Anti-Phospholipase C gamma 1 Recombinant Rabbit Monoclonal Antibody



**Catalog #: 61282**

## Aliases

PLCG1; Phospholipase C Gamma 1; PLC-II 2; PLC148; NCKAP3; PLC1; 1-Phosphatidylinositol 4,5-Bisphosphate Phosphodiesterase Gamma-1; Phospholipase C, Gamma 1 (Formerly Subtype 148); Phosphoinositide Phospholipase C-Gamma-1; Phospholipase C-II ; PLC-Gamma-1; EC 3.1.4.11; PLCgamma1; PLC-148; 1-Phosphatidyl-D-Myo-Inositol-4,5-Bisphosphate; Monophosphatidylinositol Phosphodiesterase; Triphosphoinositide Phosphodiesterase; Phosphatidylinositol Phospholipase ; Phosphoinositide Phospholipase C; Inositoltrisphosphohydrolase; Phospholipase C, Gamma 1; Phospholipase C-Gamma-1; Phosphoinositidase C; Phospholipase C-148; PLCGAMMA1

## Background

Gene Name: PLCG1

NCBI Gene Entry: [5335](#)

UniProt Entry: [P19174](#)

## Application Information

Molecular Weight: Predicted, 149 kDa; observed, 149 kDa

Clonality: Rabbit monoclonal antibody

Clone ID: 25GB2080

Species Reactivity: Human, mouse, rat

Applications Tested: Western blotting (WB), flow cytometry (FCM)

## Immunogen

A synthesized peptide derived from human PLC gamma 1

## Isotype

Rabbit IgG

## Storage Buffer

Supplied in PBS (pH 7.4) containing 50% glycerol, and 0.02% sodium azide.

## Storage

Store at -20 °C for one year.

## Recommended Dilutions

Western blotting (WB): 1:1,000-1:5,000

---

### SUPPORT

SUPPORT@GENUINBIOTECH.COM  
TEL: +1-540-855-7041

### ORDERS

SALES@GENUINBIOTECH.COM  
FAX: +1-540-855-7041

[WWW.GENUINBIOTECH.COM](http://WWW.GENUINBIOTECH.COM)

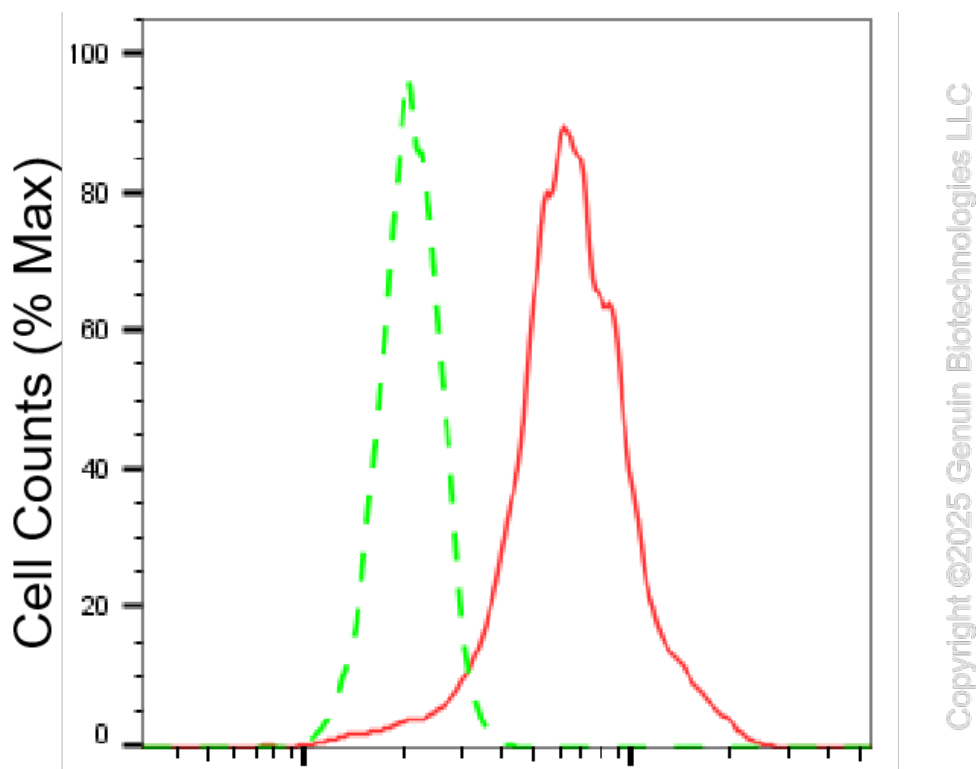
# KD-Validated Anti-Phospholipase C gamma 1 Recombinant Rabbit Monoclonal Antibody

PAGE 2

Flow Cytometry (FCM): 1:2,000

**Note:** This product is for research use only.

## Validation Data



## Phospholipase C gamma 1-Alexa Fluor® 647

Flow cytometric analysis of Phospholipase C gamma 1 expression in HT-1080 cells using Phospholipase C gamma 1 antibody (Cat#61282, 1:2,000). Green, isotype control; red, Phospholipase C gamma 1.

### SUPPORT

SUPPORT@GENUINBIOTECH.COM  
TEL: +1-540-855-7041

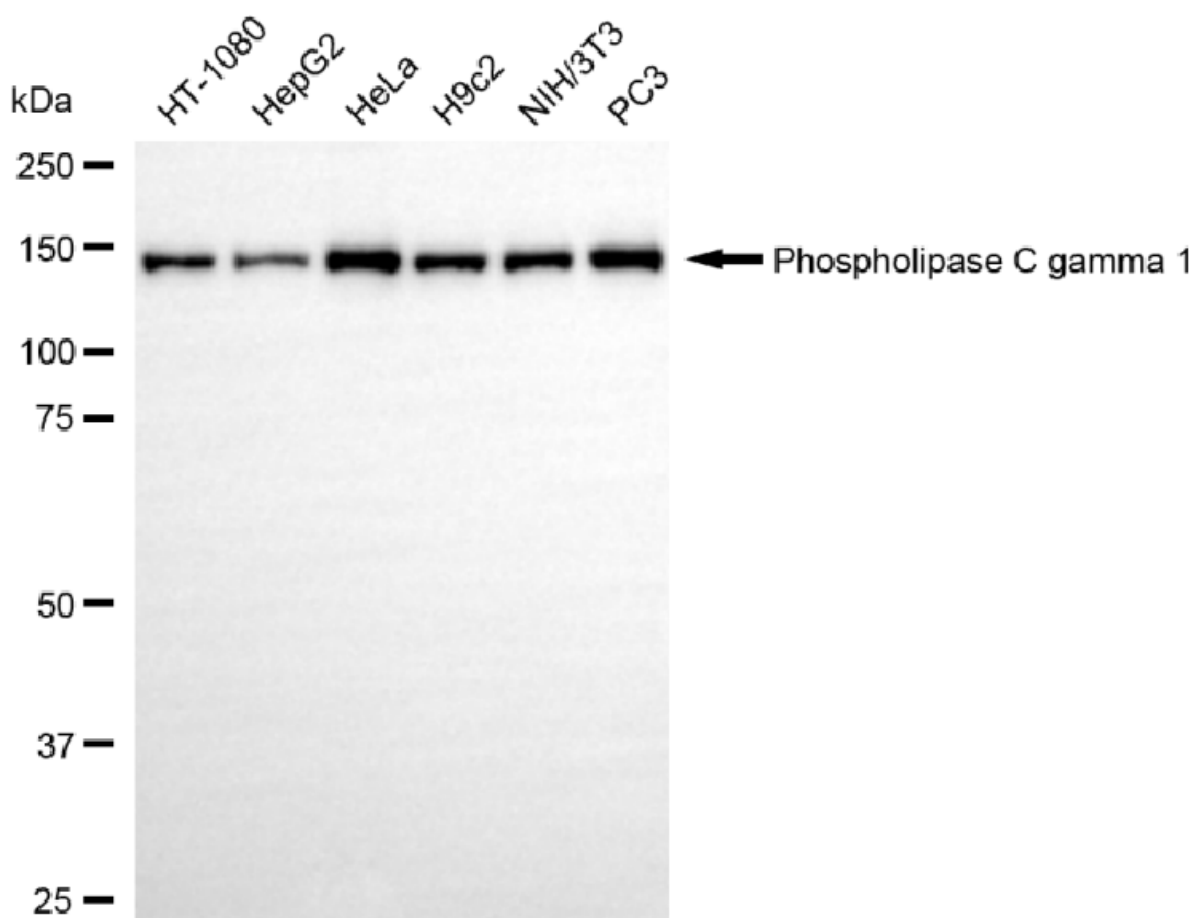
### ORDERS

SALES@GENUINBIOTECH.COM  
FAX: +1-540-855-7041

WWW.GENUINBIOTECH.COM

## KD-Validated Anti-Phospholipase C gamma 1 Recombinant Rabbit Monoclonal Antibody

PAGE 3



Copyright ©2025 Genuin Biotechnologies LLC

Western blotting analysis using anti-phospholipase C gamma 1 antibody (Cat#61282). Total cell lysates (30 µg) from various cell lines were loaded and separated by SDS-PAGE. The blot was incubated with anti-phospholipase C gamma 1 antibody (Cat#61282, 1:5,000) and HRP-conjugated goat anti-rabbit secondary antibody (Cat#201, 1:20,000) respectively. Image was developed using NaQ™ ECL Substrate Kit (Cat#716).

### SUPPORT

SUPPORT@GENUINBIOTECH.COM  
TEL: +1-540-855-7041

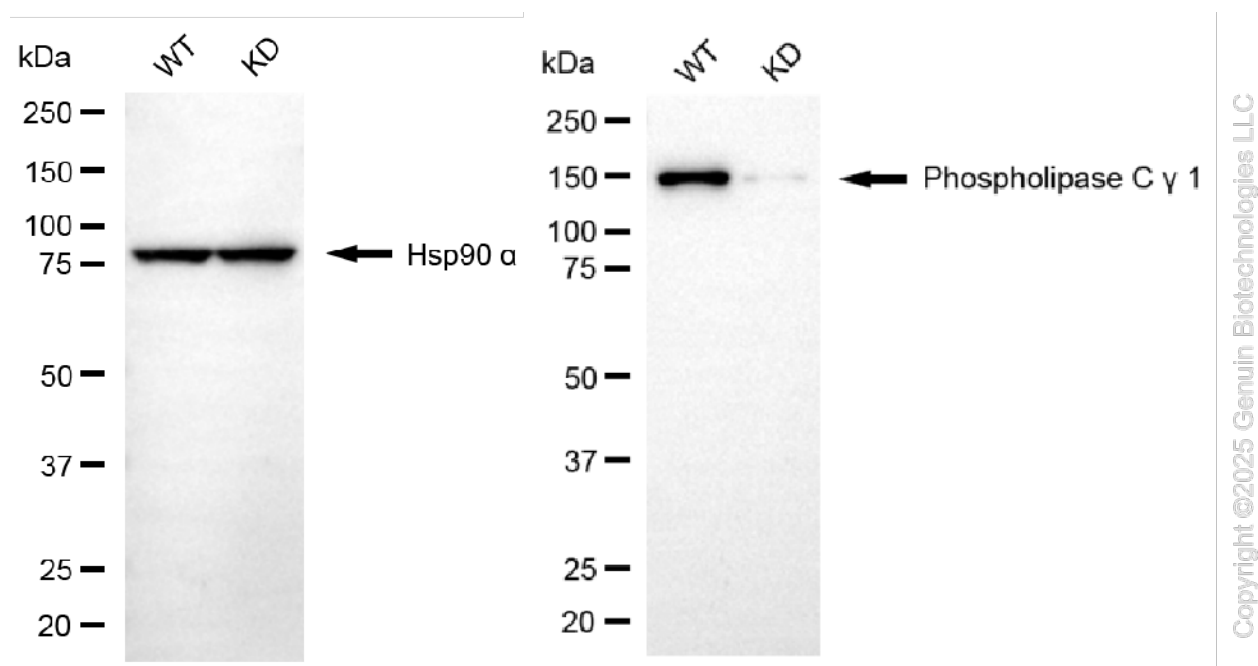
### ORDERS

SALES@GENUINBIOTECH.COM  
FAX: +1-540-855-7041

WWW.GENUINBIOTECH.COM

## KD-Validated Anti-Phospholipase C gamma 1 Recombinant Rabbit Monoclonal Antibody

PAGE 4



Western blotting analysis using anti-phospholipase C gamma 1 antibody (Cat#61282). Phospholipase C gamma 1 expression in wild type (WT) and phospholipase C gamma 1 (PLCG1) knockdown (KD) HSHC cells with 20  $\mu$ g of total cell lysates. Hsp90  $\alpha$  serves as a loading control. The blot was incubated with anti-phospholipase C gamma 1 antibody (Cat#61282, 1:5,000) and HRP-conjugated goat anti-rabbit secondary antibody (Cat#201, 1:20,000) respectively. Image was developed using NaQ™ ECL Substrate Kit (Cat#716).

### SUPPORT

SUPPORT@GENUINBIOTECH.COM  
TEL: +1-540-855-7041

### ORDERS

SALES@GENUINBIOTECH.COM  
FAX: +1-540-855-7041

[WWW.GENUINBIOTECH.COM](http://WWW.GENUINBIOTECH.COM)