

# KD-Validated Anti-Caspase 7 Recombinant Rabbit Monoclonal Antibody



**Catalog #: 61284**

## Aliases

CASP7; Caspase 7; CE-LAP3; CMH-1; MCH3; Caspase 7, Apoptosis-Related Cysteine Peptidase; Caspase 7, Apoptosis-Related Cysteine Protease; ICE-Like Apoptotic Protease 3; Caspase-7; CASP-7; Apoptotic Protease MCH-3; Apoptotic Protease Mch-3; EC 3.4.22.60; EC 3.4.22; LICE2

## Background

Gene Name: CASP7

NCBI Gene Entry: [840](#)

UniProt Entry: [P55210](#)

## Application Information

Molecular Weight: Predicted, 34 kDa; observed, 34 kDa

Clonality: Rabbit monoclonal antibody

Clone ID: 25GB2090

Species Reactivity: Human

Applications Tested: Western blotting (WB), flow cytometry (FCM), immunocytochemistry (IC)

## Immunogen

A synthesized peptide derived from human pro Caspase 7

## Isotype

Rabbit IgG

## Storage Buffer

Supplied in PBS (pH 7.4) containing 50% glycerol, and 0.02% sodium azide.

## Storage

Store at -20 °C for one year.

## Recommended Dilutions

Western blotting (WB): 1:1,000-1:5,000

Flow Cytometry (FCM): 1:2,000

Immunocytochemistry (IC): 1:100-1:1,000

---

### SUPPORT

SUPPORT@GENUINBIOTECH.COM  
TEL: +1-540-855-7041

### ORDERS

SALES@GENUINBIOTECH.COM  
FAX: +1-540-855-7041

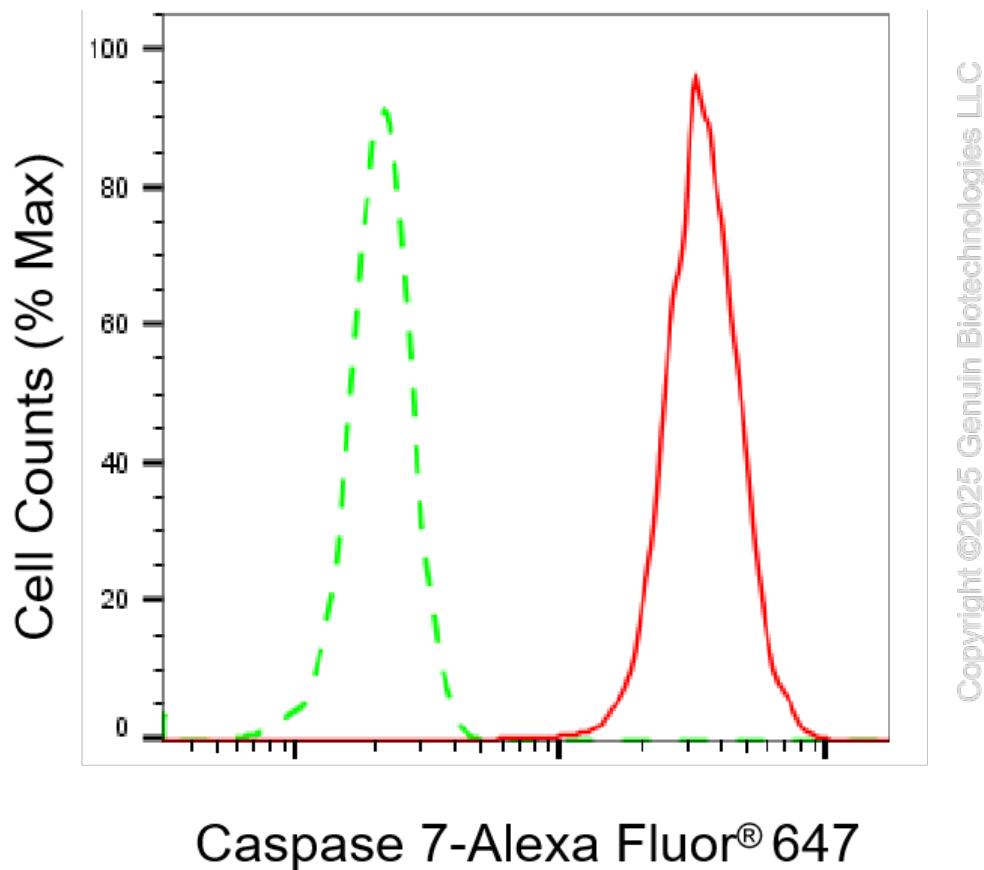
[WWW.GENUINBIOTECH.COM](http://WWW.GENUINBIOTECH.COM)

## KD-Validated Anti-Caspase 7 Recombinant Rabbit Monoclonal Antibody

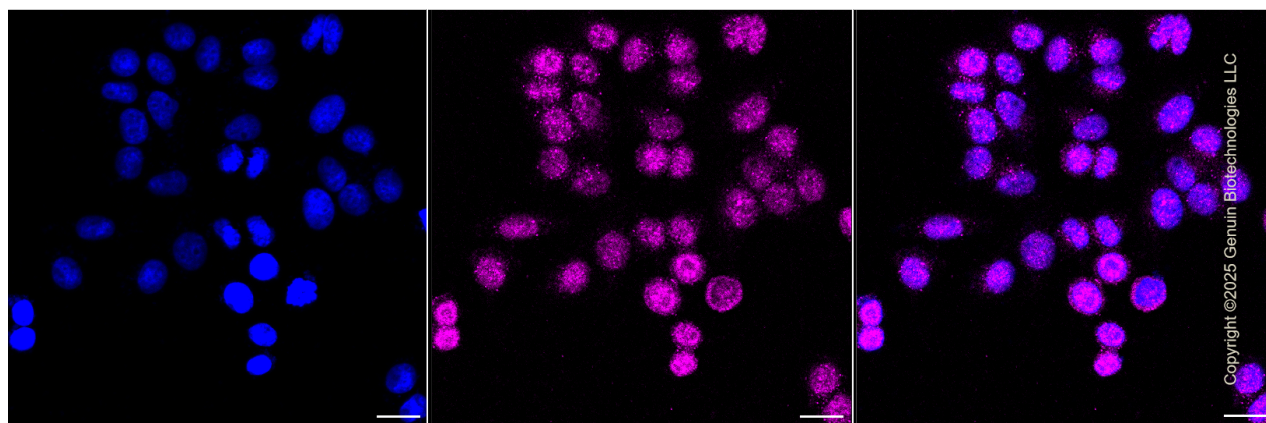
PAGE 2

**Note:** This product is for research use only.

### Validation Data



Flow cytometric analysis of Caspase 7 expression in HepG2 cells using Caspase 7 antibody (Cat#61284, 1:2,000). Green, isotype control; red, Caspase 7.



Immunocytochemical staining of HepG2 cells with anti-Caspase 7 antibody (Cat#61284, 1:1,000). Nuclei were stained blue with DAPI; Caspase 7 was stained magenta with Alexa Fluor® 647. Images were taken using Leica stellaris 5. Protein abundance based on laser Intensity and smart gain: Medium. Scale bar, 20  $\mu$ m.

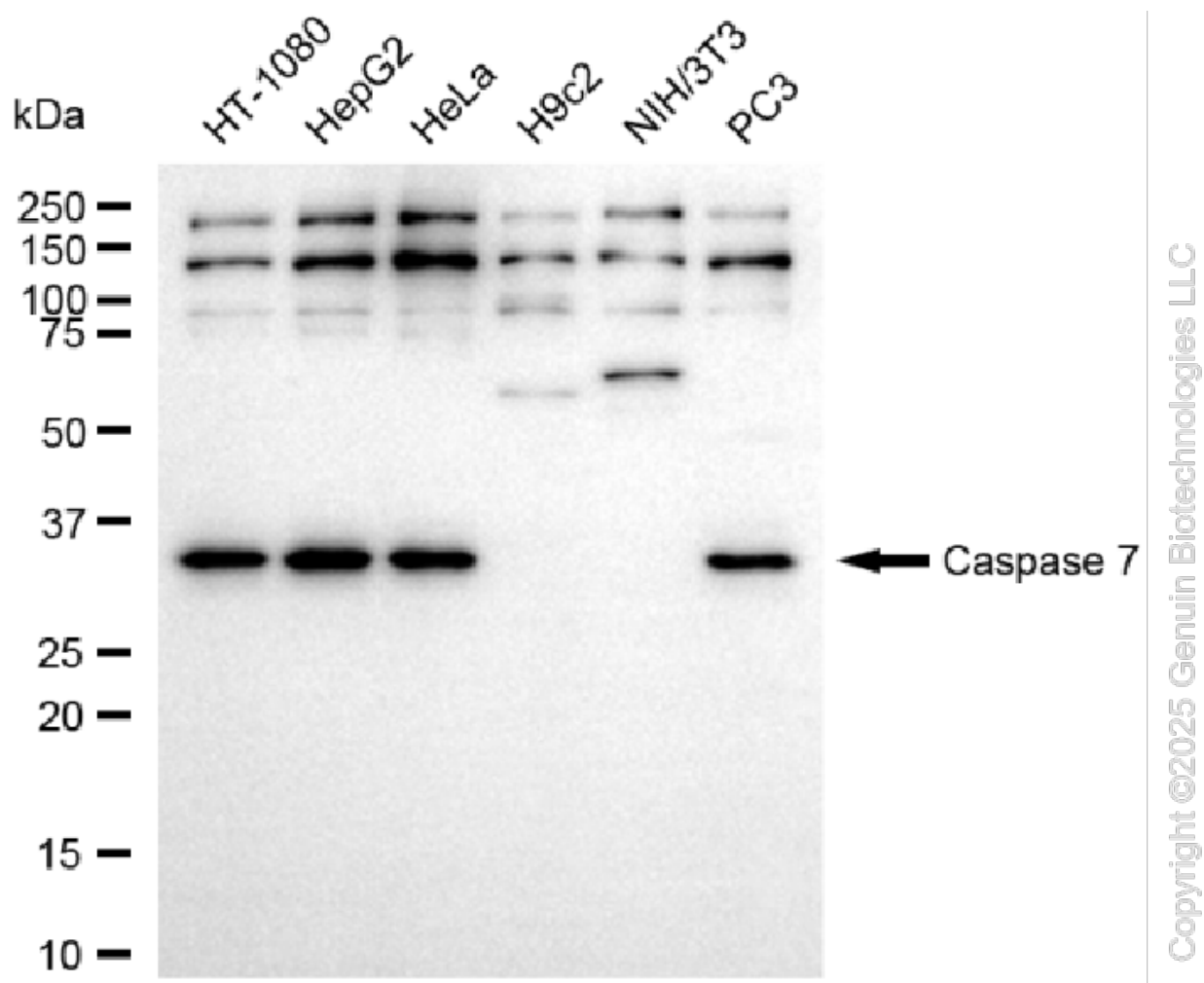
#### SUPPORT

SUPPORT@GENUINBIOTECH.COM  
TEL: +1-540-855-7041

#### ORDERS

SALES@GENUINBIOTECH.COM  
FAX: +1-540-855-7041

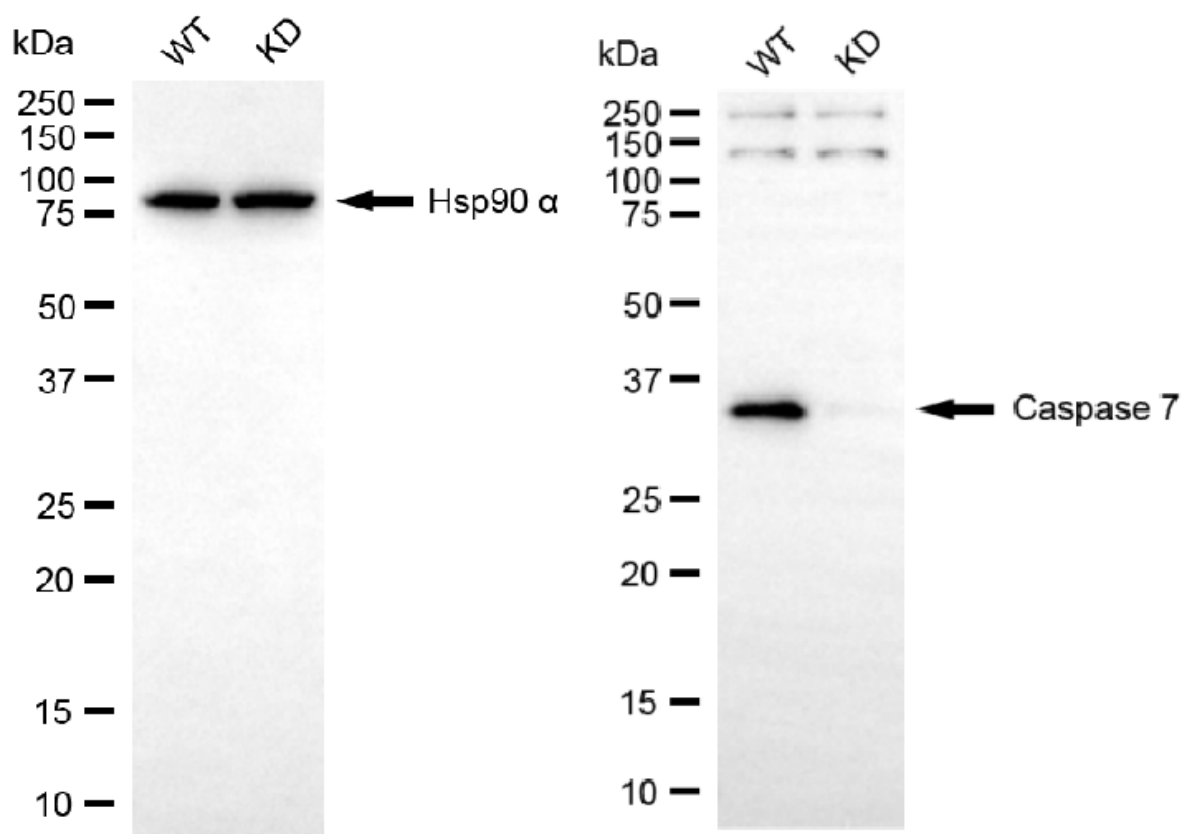
[WWW.GENUINBIOTECH.COM](http://WWW.GENUINBIOTECH.COM)



Western blotting analysis using anti-caspase 7 antibody (Cat#61284). Total cell lysates (30 µg) from various cell lines were loaded and separated by SDS-PAGE. The blot was incubated with anti-caspase 7 antibody (Cat#61284, 1:5,000) and HRP-conjugated goat anti-rabbit secondary antibody (Cat#201, 1:20,000) respectively. Image was developed using FeQ™ ECL Substrate Kit (Cat#226).

## KD-Validated Anti-Caspase 7 Recombinant Rabbit Monoclonal Antibody

PAGE 4



Copyright ©2025 Genuin Biotechnologies LLC

Western blotting analysis using anti-caspase 7 antibody (Cat#61284). Caspase 7 expression in wild-type (WT) and caspase 7 (CASP7) knockdown (KD) HeLa cells with 20 µg of total cell lysates. Hsp90 α serves as a loading control. The blot was incubated with anti-caspase 7 antibody (Cat#61284, 1:5,000) and HRP-conjugated goat anti-rabbit secondary antibody (Cat#201, 1:20,000) respectively. Image was developed using FeQ™ ECL Substrate Kit (Cat#226).

### SUPPORT

SUPPORT@GENUINBIOTECH.COM  
TEL: +1-540-855-7041

### ORDERS

SALES@GENUINBIOTECH.COM  
FAX: +1-540-855-7041

[WWW.GENUINBIOTECH.COM](http://WWW.GENUINBIOTECH.COM)