

# KD-Validated Anti-Glycogen synthase 1 Recombinant Rabbit Monoclonal Antibody



**Catalog #: 61286**

## Aliases

GYS1; Glycogen Synthase 1; GSY; GYS; Glycogen [Starch] Synthase, Muscle; Glycogen Synthase 1 (Muscle); EC 2.4.1.11

## Background

Gene Name: GYS1

NCBI Gene Entry: [2997](#)

UniProt Entry: [P13807](#)

## Application Information

Molecular Weight: Predicted, 84 kDa; observed, 84 kDa

Clonality: Rabbit monoclonal antibody

Clone ID: 25GB2105

Species Reactivity: Human, mouse, rat

Applications Tested: Western blotting (WB), flow cytometry (FCM), immunocytochemistry (IC)

## Immunogen

A synthesized peptide derived from human Glycogen synthase

## Isotype

Rabbit IgG

## Storage Buffer

Supplied in PBS (pH 7.4) containing 50% glycerol, and 0.02% sodium azide.

## Storage

Store at -20 °C for one year.

## Recommended Dilutions

Western Blotting (WB): 1:4,000-1:20,000

Flow Cytometry (FCM): 1:2,000

Immunocytochemistry (IC): 1:100-1:1,000

**Note:** This product is for research use only.

## Validation Data

---

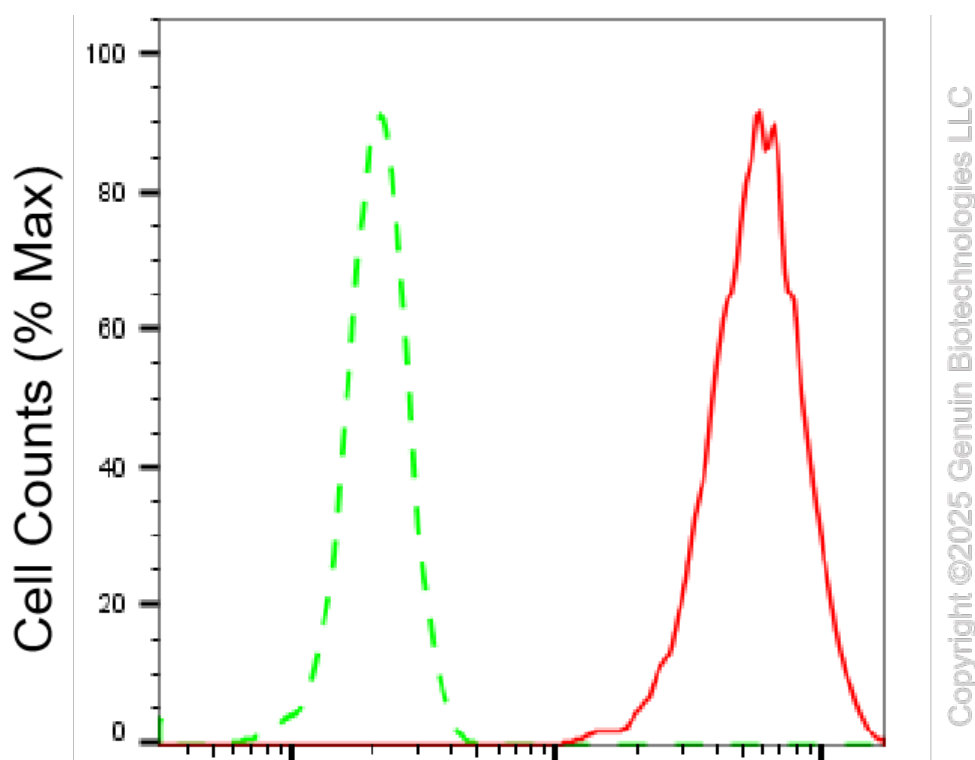
### SUPPORT

SUPPORT@GENUINBIOTECH.COM  
TEL: +1-540-855-7041

### ORDERS

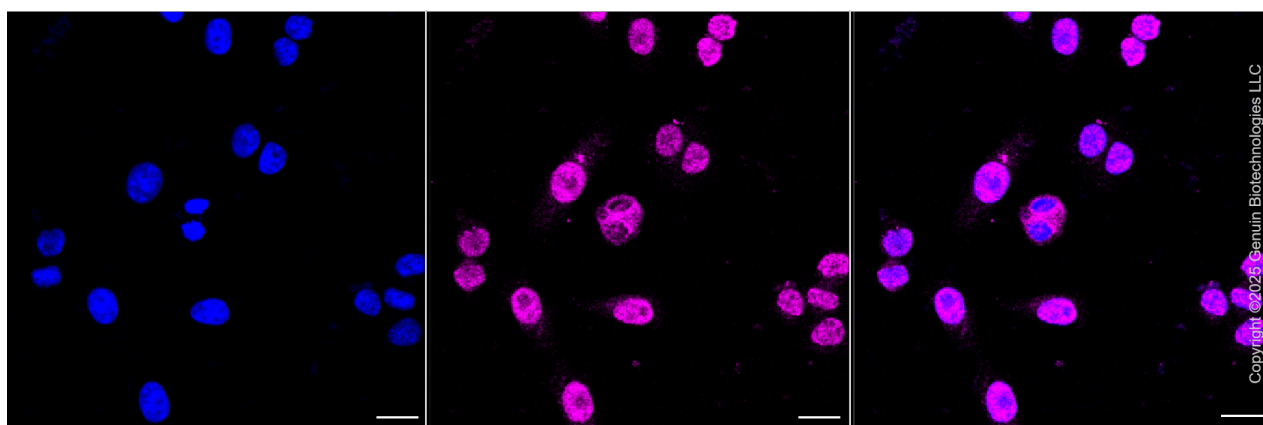
SALES@GENUINBIOTECH.COM  
FAX: +1-540-855-7041

[WWW.GENUINBIOTECH.COM](http://WWW.GENUINBIOTECH.COM)



### Glycogen synthase 1-Alexa Fluor® 647

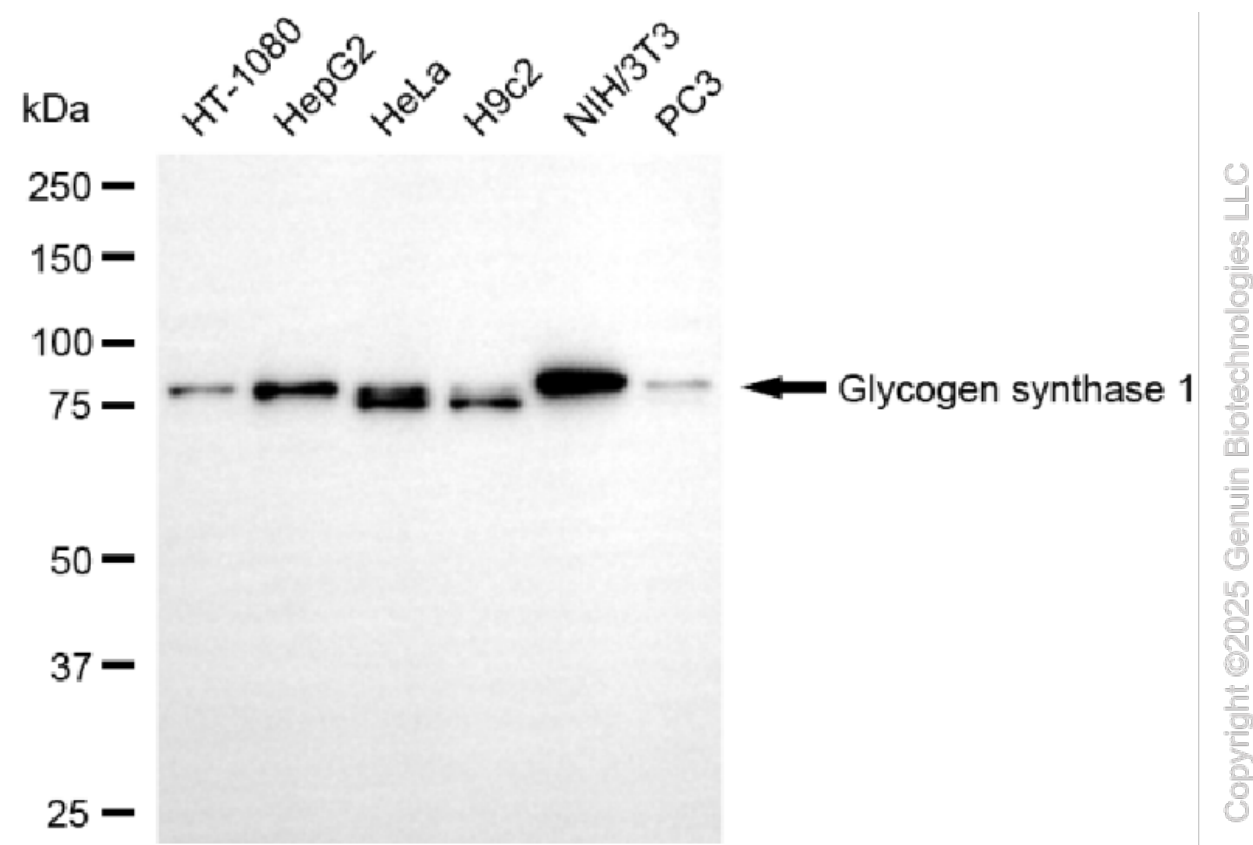
Flow cytometric analysis of Glycogen synthase 1 expression in HepG2 cells using Glycogen synthase 1 antibody (Cat#61286, 1:2,000). Green, isotype control; red, Glycogen synthase 1.



Immunocytochemical staining of HepG2 cells with anti-Glycogen synthase 1 antibody (Cat#61286, 1:1,000). Nuclei were stained blue with DAPI; Glycogen synthase 1 was stained magenta with Alexa Fluor® 647. Images were taken using Leica stellaris 5. Protein abundance based on laser Intensity and smart gain: Medium. Scale bar, 20  $\mu$ m.

## KD-Validated Anti-Glycogen synthase 1 Recombinant Rabbit Monoclonal Antibody

PAGE 3



Western blotting analysis using anti-glycogen synthase 1 antibody (Cat#61286). Total cell lysates (30 µg) from various cell lines were loaded and separated by SDS-PAGE. The blot was incubated with anti-glycogen synthase 1 antibody (Cat#61286, 1:20,000) and HRP-conjugated goat anti-rabbit secondary antibody (Cat#201, 1:20,000) respectively. Image was developed using NaQ™ ECL Substrate Kit (Cat#716).

### SUPPORT

SUPPORT@GENUINBIOTECH.COM  
TEL: +1-540-855-7041

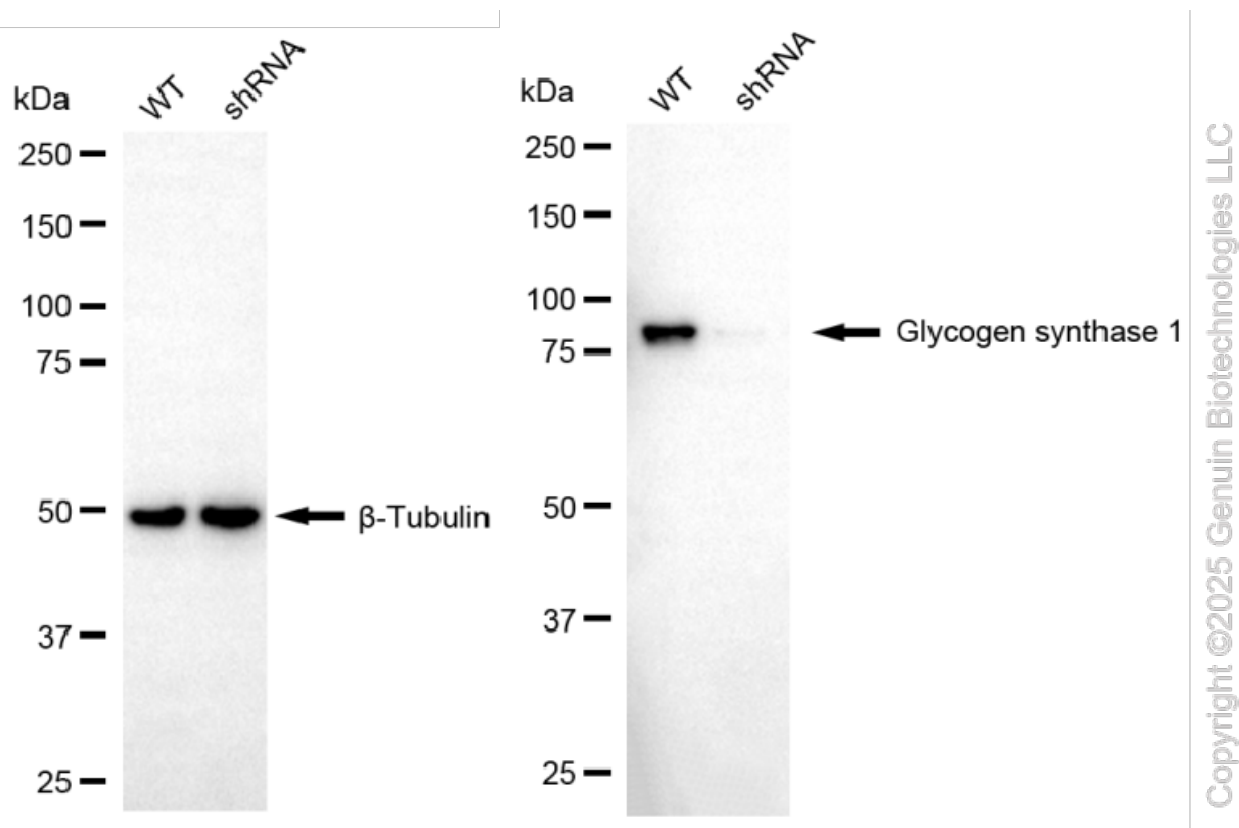
### ORDERS

SALES@GENUINBIOTECH.COM  
FAX: +1-540-855-7041

WWW.GENUINBIOTECH.COM

## KD-Validated Anti-Glycogen synthase 1 Recombinant Rabbit Monoclonal Antibody

PAGE 4



Western blotting analysis using anti-glycogen synthase 1 antibody (Cat#61286). Glycogen synthase 1 expression in wild-type (WT) and glycogen synthase 1 (GYS1) shRNA knockdown (KD) HeLa cells with 20  $\mu$ g of total cell lysates.  $\beta$ -Tubulin serves as a loading control. The blot was incubated with anti-glycogen synthase 1 antibody (Cat#61286, 1:2,000) and HRP-conjugated goat anti-rabbit secondary antibody (Cat#201, 1:20,000) respectively. Image was developed using FeQ™ ECL Substrate Kit (Cat#226).

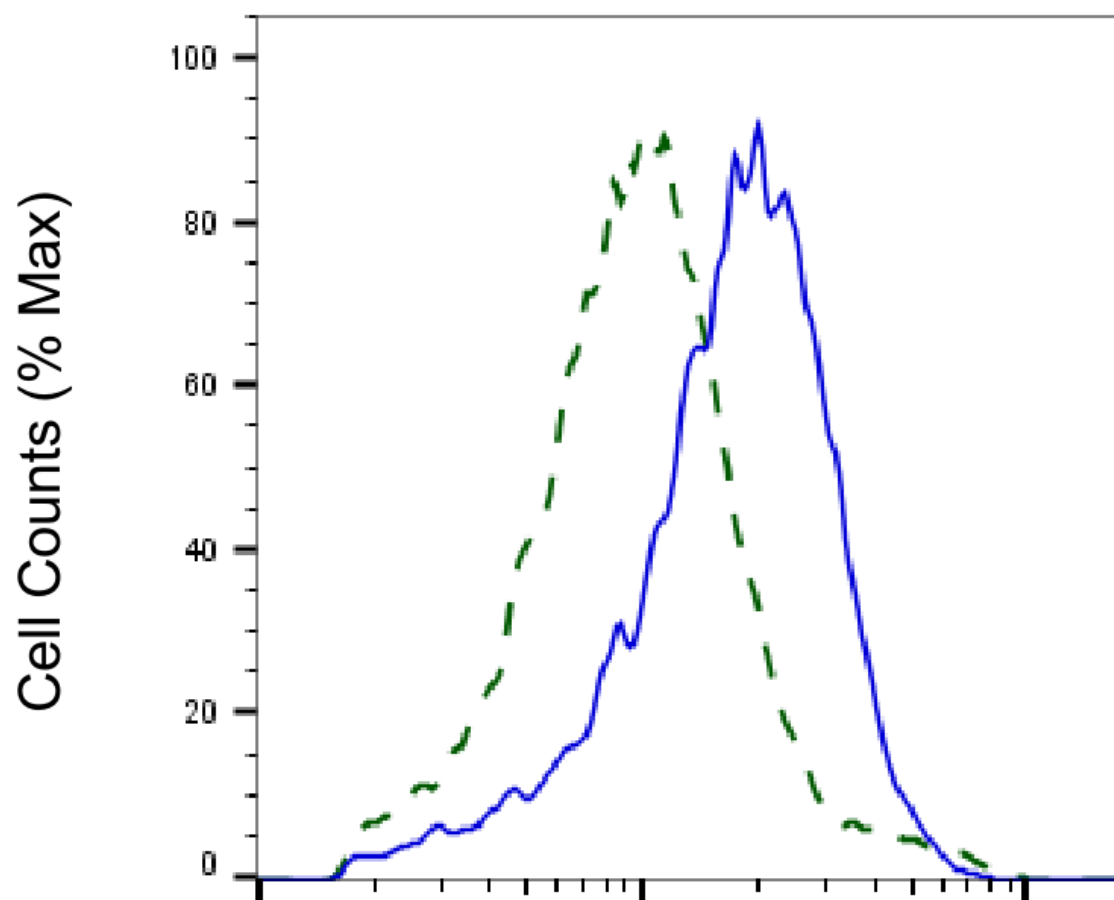
### SUPPORT

SUPPORT@GENUINBIOTECH.COM  
TEL: +1-540-855-7041

### ORDERS

SALES@GENUINBIOTECH.COM  
FAX: +1-540-855-7041

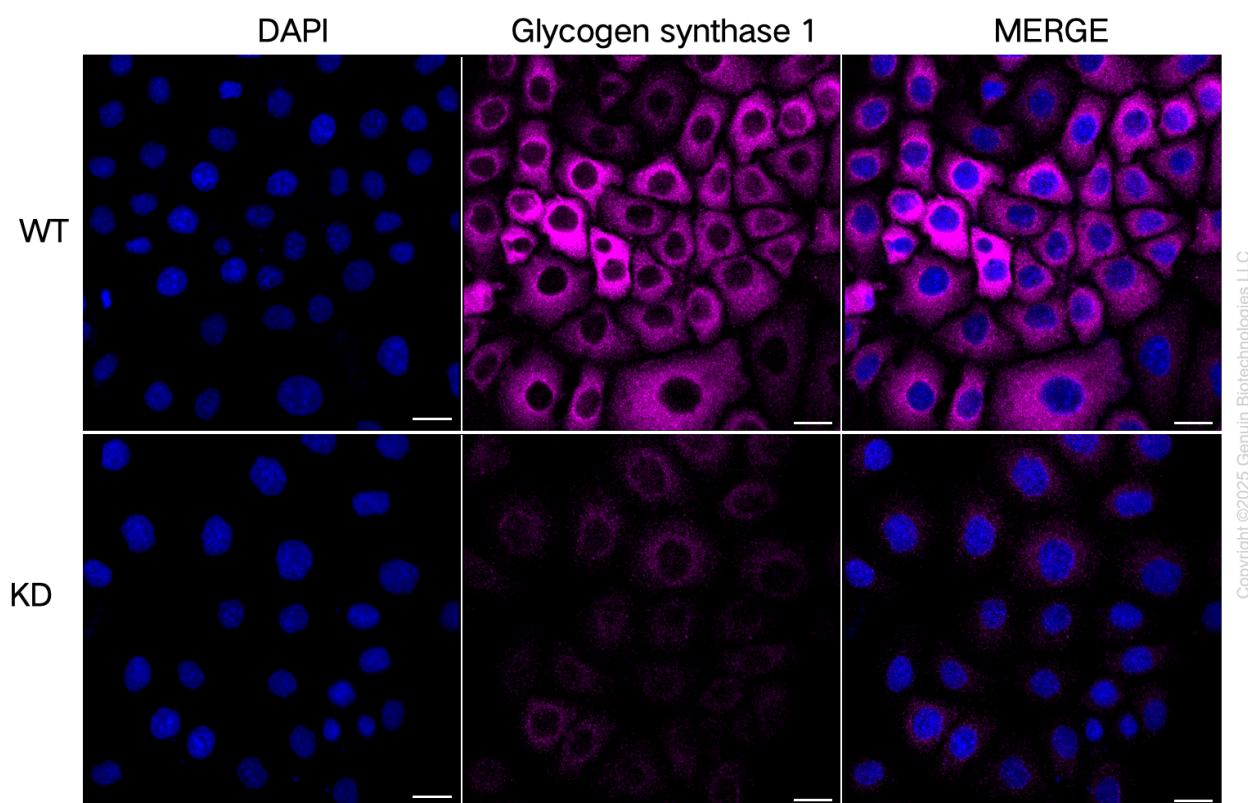
[WWW.GENUINBIOTECH.COM](http://WWW.GENUINBIOTECH.COM)



Copyright ©2025 Genuin Biotechnologies LLC

## Glycogen synthase 1-Alexa Fluor® 647

Validation of Glycogen synthase 1 knockdown using flow cytometry. Wild-type(WT, Blue) and knockdown(KD, Green) HeLa cells were stained with anti-Glycogen synthase 1 antibody (Cat#61286, 1:2,000) and analyzed using BD flow cytometer.



Immunocytochemical staining of HeLa cells using anti-Glycogen synthase 1 antibody (Cat#61286, 1:1,000), Top panel: wild-type (WT); Bottom panel: Glycogen synthase 1 shRNA knockdown (KD). Nuclei were stained blue with DAPI; Glycogen synthase 1 was stained magenta with Alexa Fluor® 647. Scale bar, 20  $\mu$ m.