

KD-Validated Anti-Histone deacetylase 2 Recombinant Rabbit Monoclonal Antibody



Catalog #: 61287

Aliases

HDAC2; Histone Deacetylase 2; KDAC2; RPD3; YAF1; Protein Deacylase HDAC2; EC 3.5.1.98; HD2; Transcriptional Regulator Homolog RPD3; YY1-Associated Factor 1; EC 3.5.1.-

Background

Gene Name: HDAC2

NCBI Gene Entry: [3066](#)

UniProt Entry: [Q92769](#)

Application Information

Molecular Weight: Predicted, 55 kDa; observed, 60 kDa

Clonality: Rabbit monoclonal antibody

Clone ID: 25GB2110

Species Reactivity: Human, mouse, rat

Applications Tested: Western blotting (WB), flow cytometry (FCM), immunocytochemistry (IC)

Immunogen

A synthesized peptide derived from human HDAC2

Isotype

Rabbit IgG

Storage Buffer

Supplied in PBS (pH 7.4) containing 50% glycerol, and 0.02% sodium azide.

Storage

Store at -20 °C for one year.

Recommended Dilutions

Western blotting (WB): 1:2,000-1:10,000

Flow Cytometry (FCM): 1:2,000

Immunocytochemistry (IC): 1:100-1:1,000

Note: This product is for research use only.

Validation Data

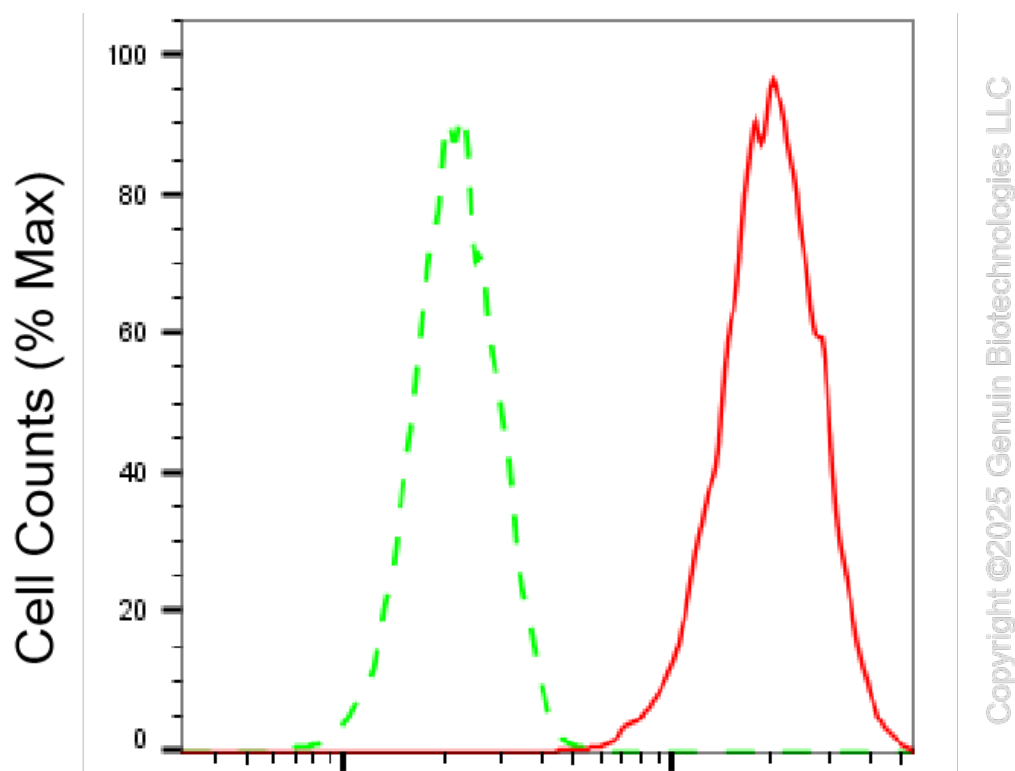
SUPPORT

SUPPORT@GENUINBIOTECH.COM
TEL: +1-540-855-7041

ORDERS

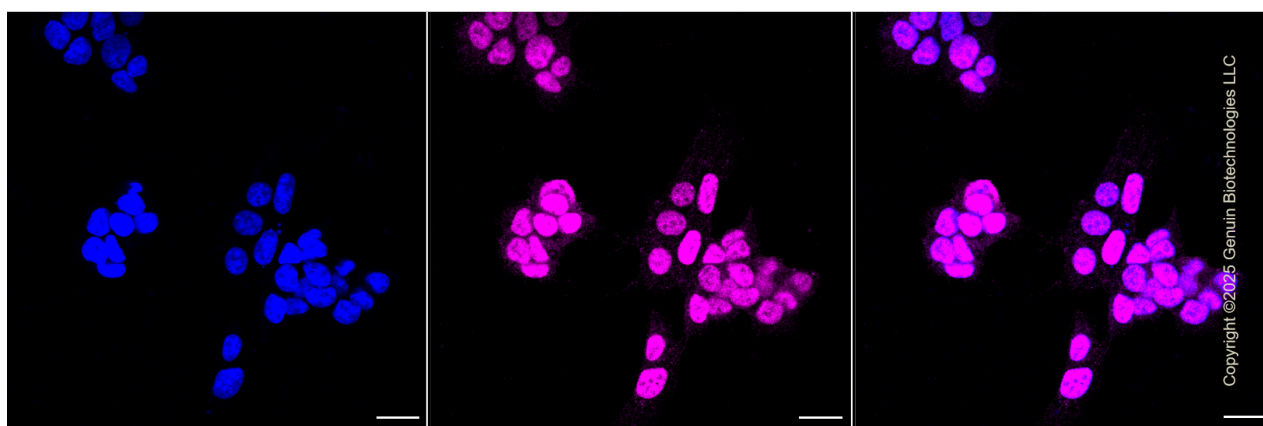
SALES@GENUINBIOTECH.COM
FAX: +1-540-855-7041

WWW.GENUINBIOTECH.COM



Histone deacetylase 2-Alexa Fluor® 647

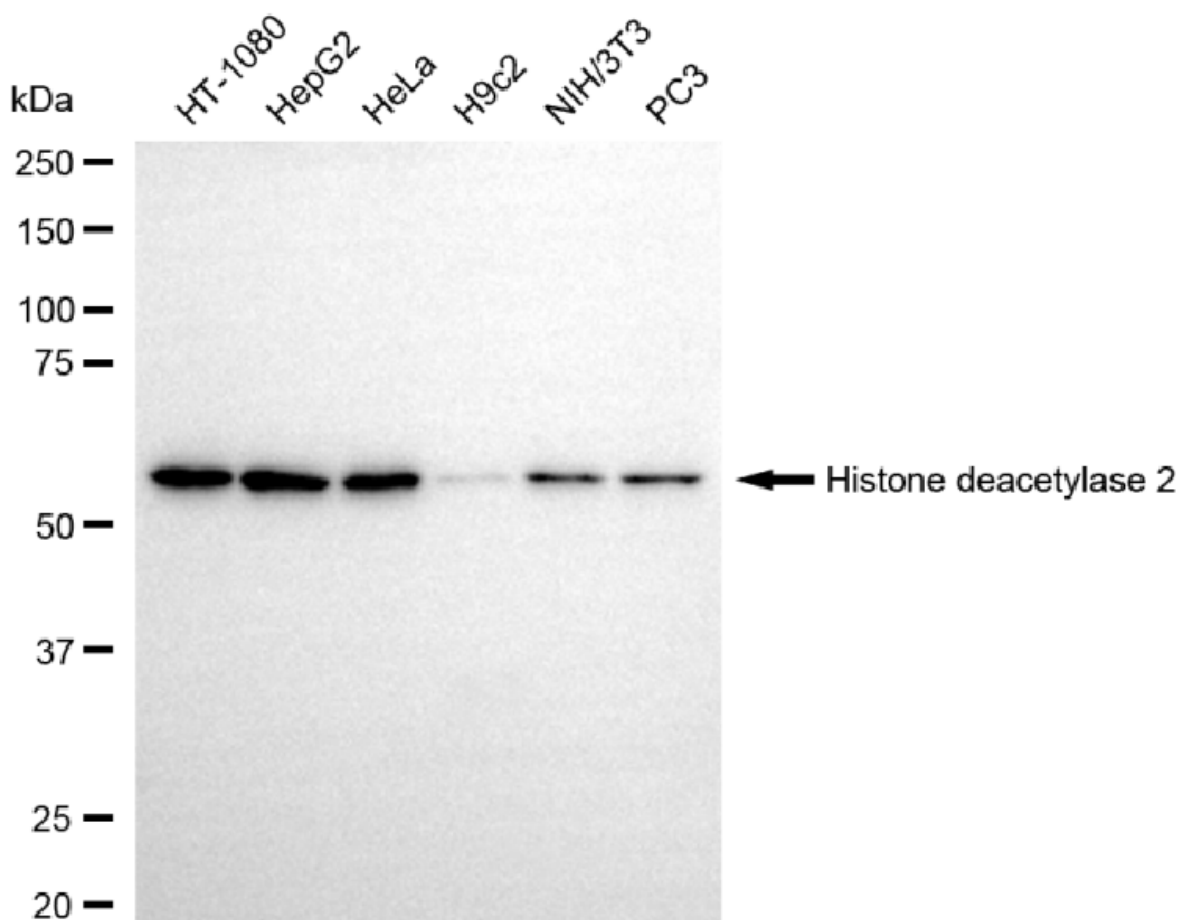
Flow cytometric analysis of Histone deacetylase 2 expression in HAP-1 cells using Histone deacetylase 2 antibody (Cat#61287, 1:2,000). Green, isotype control; red, Histone deacetylase 2.



Immunocytochemical staining of HAP-1 cells with anti-Histone deacetylase 2 antibody (Cat#61287, 1:1,000). Nuclei were stained blue with DAPI; Histone deacetylase 2 was stained magenta with Alexa Fluor® 647. Images were taken using Leica stellaris 5. Protein abundance based on laser Intensity and smart gain: Medium. Scale bar, 20 μ m.

KD-Validated Anti-Histone deacetylase 2 Recombinant Rabbit Monoclonal Antibody

PAGE 3



Copyright ©2025 Genuin Biotechnologies LLC

Western blotting analysis using anti-histone deacetylase 2 antibody (Cat#61287). Total cell lysates (30 µg) from various cell lines were loaded and separated by SDS-PAGE. The blot was incubated with anti-histone deacetylase 2 antibody (Cat#61287, 1:10,000) and HRP-conjugated goat anti-rabbit secondary antibody (Cat#201, 1:20,000) respectively. Image was developed using NaQ™ ECL Substrate Kit (Cat#716).

SUPPORT

SUPPORT@GENUINBIOTECH.COM
TEL: +1-540-855-7041

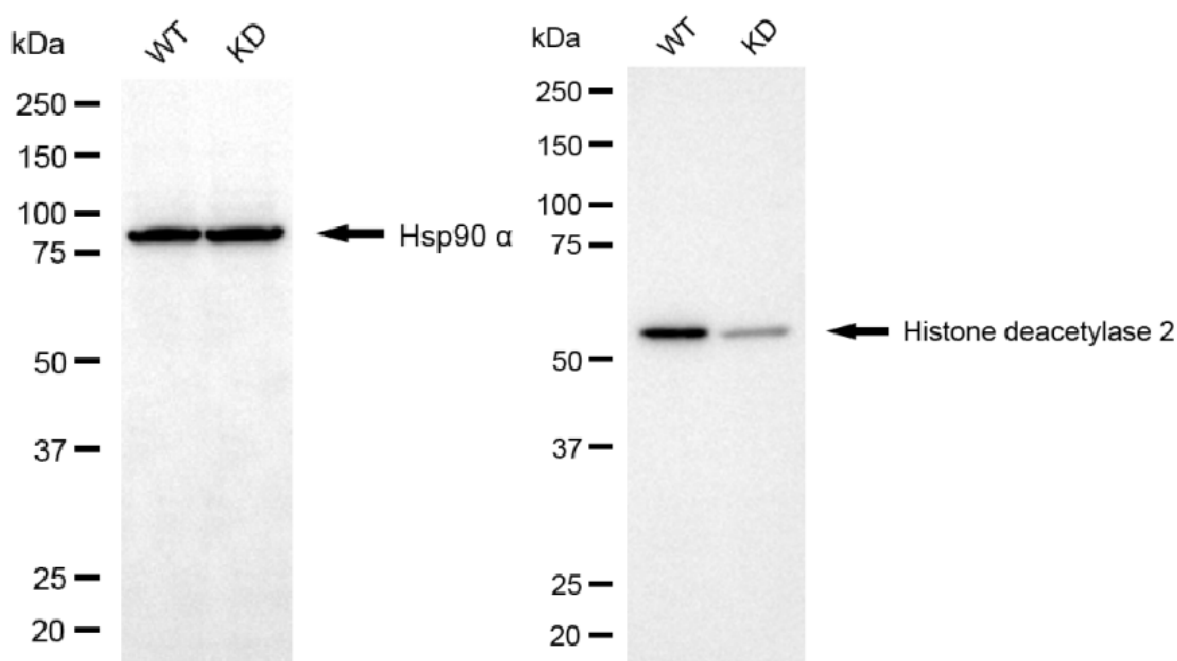
ORDERS

SALES@GENUINBIOTECH.COM
FAX: +1-540-855-7041

WWW.GENUINBIOTECH.COM

KD-Validated Anti-Histone deacetylase 2 Recombinant Rabbit Monoclonal Antibody

PAGE 4



Copyright ©2025 Genuin Biotechnologies LLC

Western blotting analysis using anti-histone deacetylase 2 antibody (Cat#61287). Histone deacetylase 2 expression in wild type (WT) and histone deacetylase 2 (HDAC2) knockdown (KD) HSHC cells with 20 μ g of total cell lysates. Hsp90 α serves as a loading control. The blot was incubated with anti-histone deacetylase 2 antibody (Cat#61287, 1:10,000) and HRP-conjugated goat anti-rabbit secondary antibody (Cat#201, 1:20,000) respectively. Image was developed using NaQ™ ECL Substrate Kit (Cat#716).

SUPPORT

SUPPORT@GENUINBIOTECH.COM
TEL: +1-540-855-7041

ORDERS

SALES@GENUINBIOTECH.COM
FAX: +1-540-855-7041

WWW.GENUINBIOTECH.COM