

KD-Validated Anti-c-Jun Recombinant Rabbit Monoclonal Antibody



Catalog #: 61288

Aliases

JUN; Jun Proto-Oncogene, AP-1 Transcription Factor Subunit; V-Jun Avian Sarcoma Virus 17 Oncogene Homolog; AP-1; Transcription Factor AP-1 Subunit Jun; Transcription Factor Jun; Proto-Oncogene C-Jun; Activator Protein 1; Jun Oncogene; C-Jun; AP1; P39; V-Jun Sarcoma Virus 17; Oncogene Homolog; Jun Activation Domain Binding Protein; Enhancer-Binding Protein AP1; Transcription Factor AP-1; Proto-Oncogene CJun; C-JUN; CJUN

Background

Gene Name: JUN

NCBI Gene Entry: [3725](#)

UniProt Entry: [P05412](#)

Application Information

Molecular Weight: Predicted, 36 kDa, observed, 39 kDa

Clonality: Rabbit monoclonal antibody

Clone ID: 23GB2435

Species Reactivity: Human, mouse

Applications Tested: Western blotting (WB), flow cytometry (FCM), immunocytochemistry (IC)

Immunogen

A synthesized peptide derived from human c-Jun

Isotype

Rabbit IgG

Storage Buffer

Supplied in PBS (pH 7.4) containing 50% glycerol, and 0.02% sodium azide.

Storage

Store at -20 °C for one year.

Recommended Dilutions

Western Blotting (WB): 1:1,000-1:5,000

Flow Cytometry (FCM): 1:2,000

Immunocytochemistry (IC): 1:100-1:1,000

SUPPORT

SUPPORT@GENUINBIOTECH.COM
TEL: +1-540-855-7041

ORDERS

SALES@GENUINBIOTECH.COM
FAX: +1-540-855-7041

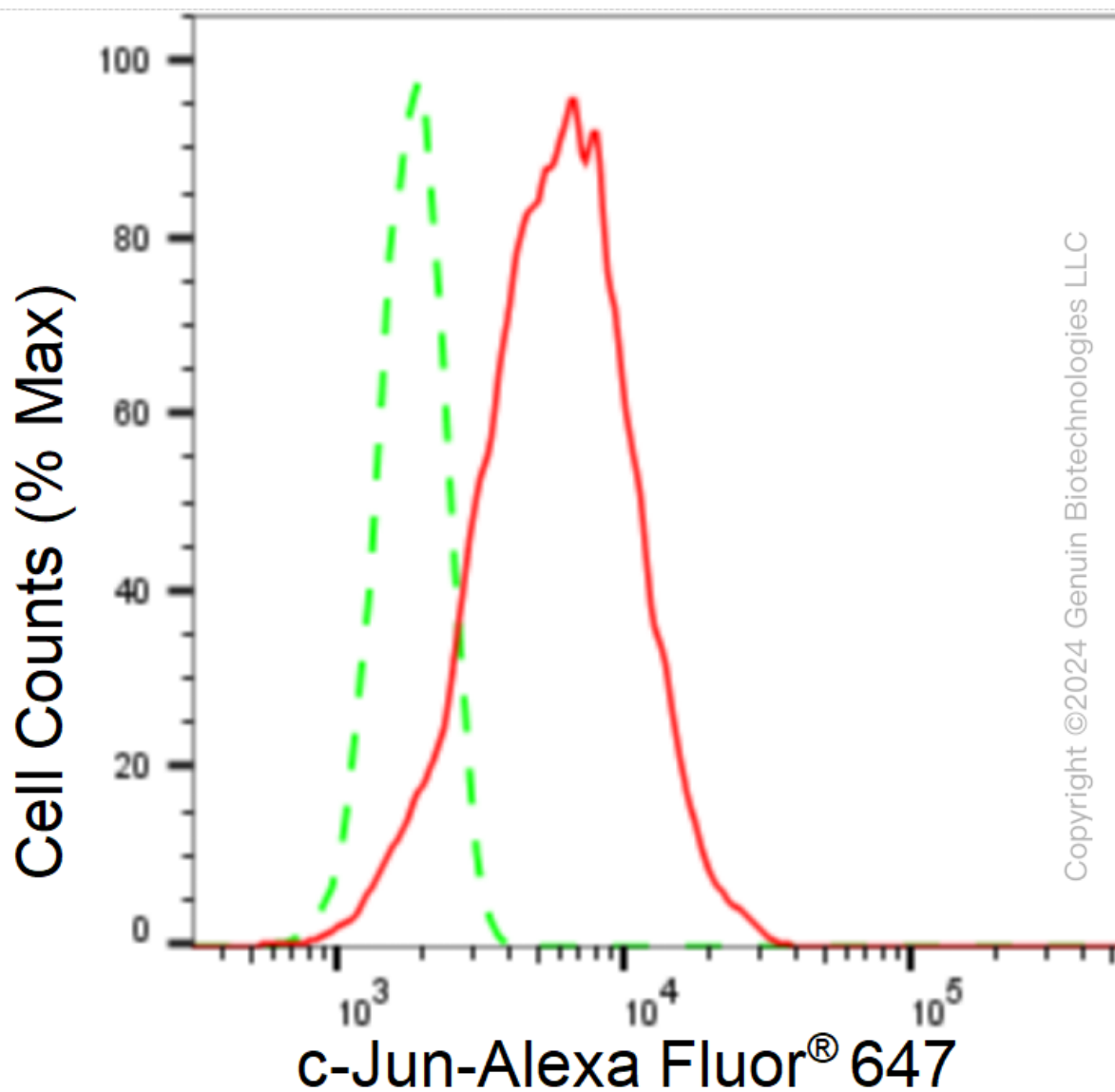
WWW.GENUINBIOTECH.COM

KD-Validated Anti-c-Jun Recombinant Rabbit Monoclonal Antibody

PAGE 2

Note: This product is for research use only.

Validation Data



Flow cytometric analysis of c-Jun expression in HT-1080 cells using c-Jun antibody (Cat#61288, 1:2,000). Green, isotype control; red, c-Jun.

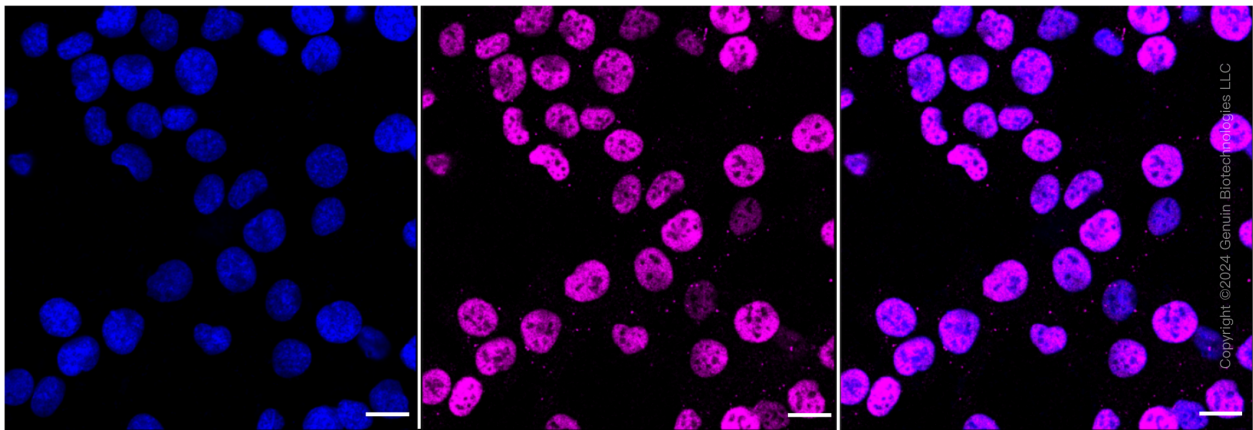
SUPPORT

SUPPORT@GENUINBIOTECH.COM
TEL: +1-540-855-7041

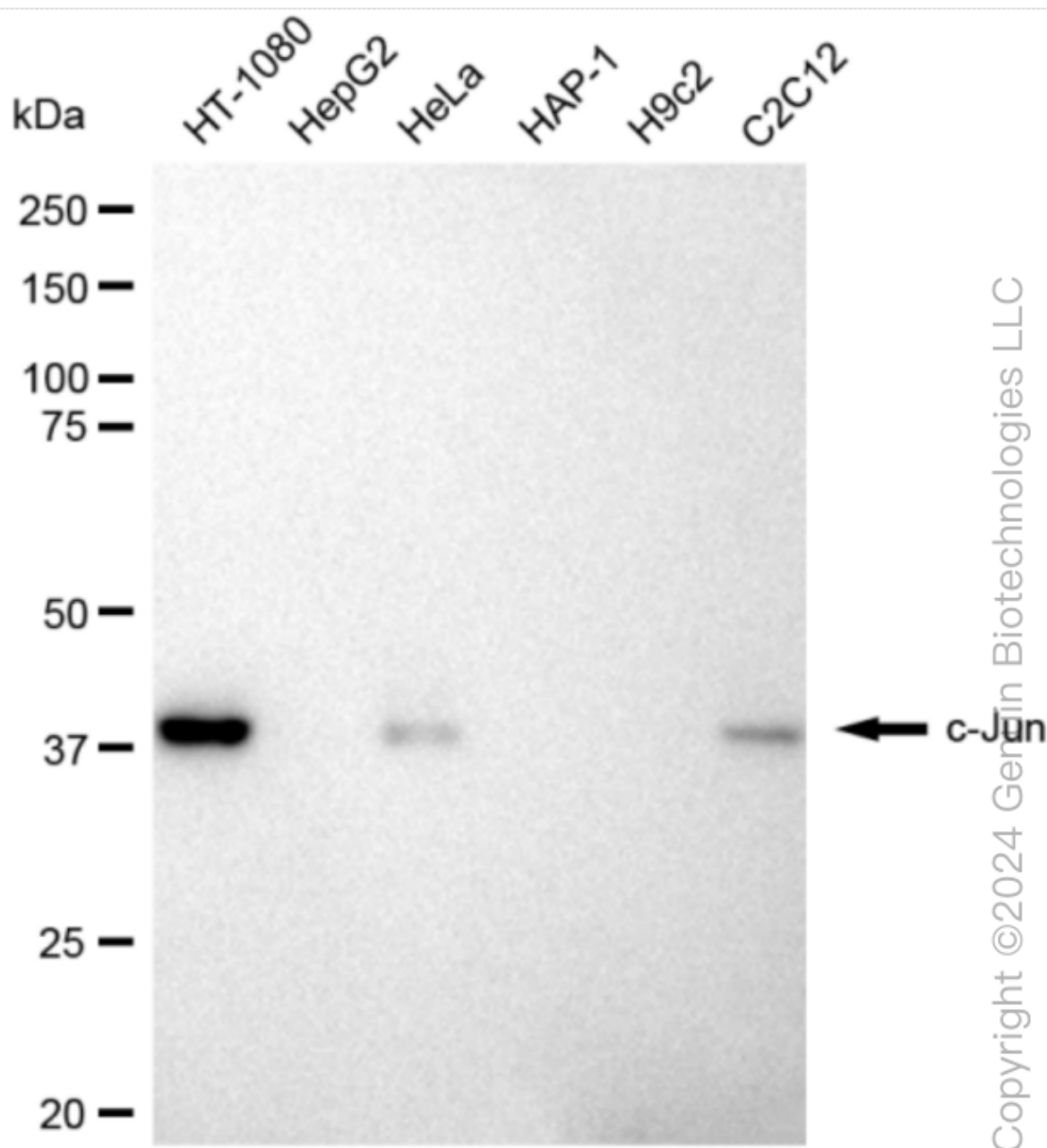
ORDERS

SALES@GENUINBIOTECH.COM
FAX: +1-540-855-7041

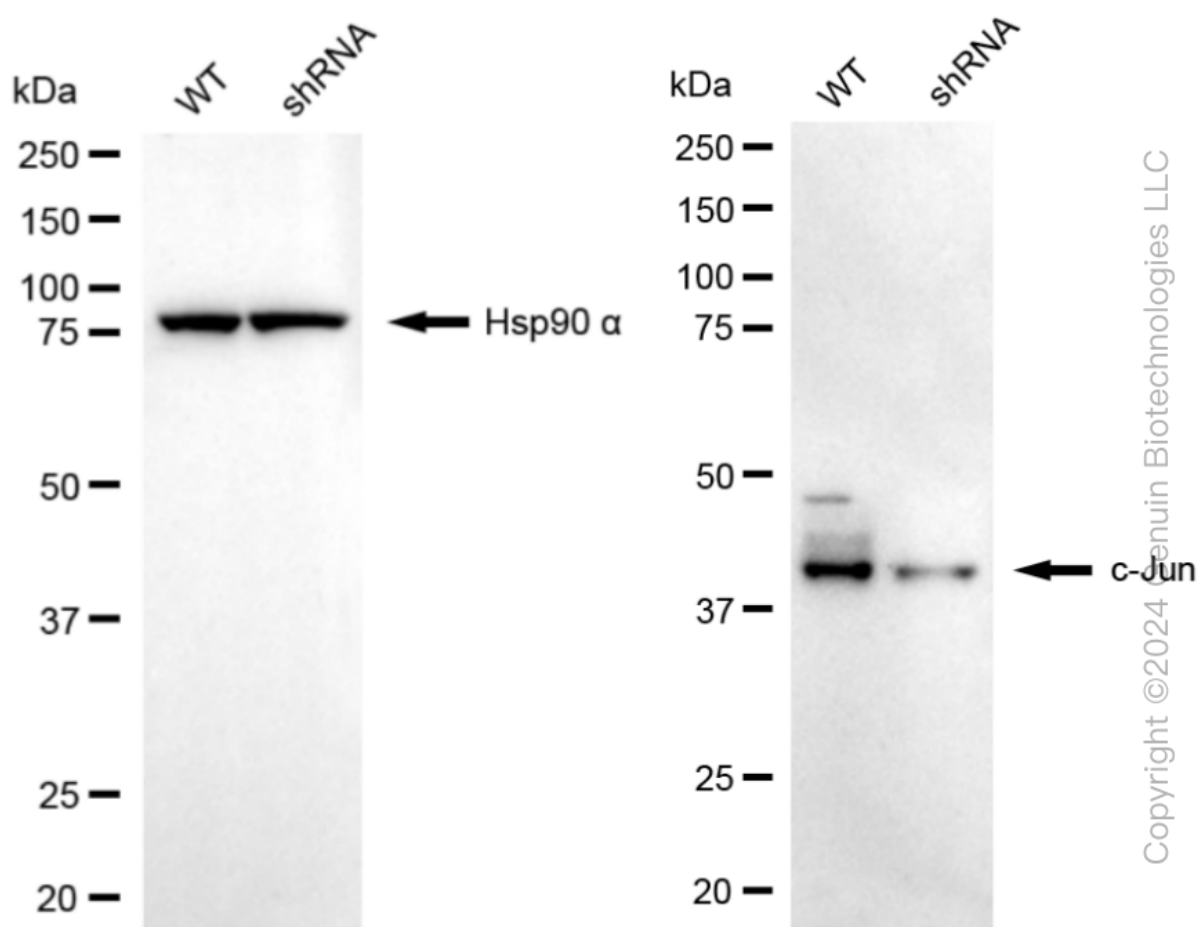
WWW.GENUINBIOTECH.COM



Immunocytochemical staining of HT-1080 cells with C-Jun antibody (Cat#61288, 1:1,000). Nuclei were stained blue with DAPI; C-Jun was stained magenta with Alexa Fluor® 647. Images were taken using Leica stellaris 5. Protein abundance based on laser Intensity and smart gain: Medium. Scale bar: 20 μ m.



Western blotting analysis using anti-c-Jun antibody (Cat#61288). Total cell lysates (30 µg) from various cell lines were loaded and separated by SDS-PAGE. The blot was incubated with anti-c-Jun antibody (Cat#61288, 1:5,000) and HRP-conjugated goat anti-rabbit secondary antibody (Cat#201, 1:20,000) respectively. Image was developed using FeQ™ ECL Substrate Kit (Cat#226).



Western blotting analysis using anti-c-Jun antibody (Cat#61288). C-Jun expression in wild-type (WT) and JUN shRNA knockdown (KD) C2C12 cells with 20 μ g of total cell lysates. Hsp90 α serves as a loading control. The blot was incubated with anti-c-Jun antibody (Cat#61288, 1:5,000) and HRP-conjugated goat anti-rabbit secondary antibody (Cat#201, 1:20,000) respectively. Image was developed using FeQ™ ECL Substrate Kit (Cat#226). JUN, Jun proto-oncogene, AP-1 transcription factor subunit.