

KD-Validated Anti-KLF4 Recombinant Rabbit Monoclonal Antibody



Catalog #: 61290

Aliases

KLF Transcription Factor 4; GKLF; EZF; Epithelial Zinc Finger Protein EZF; Gut-Enriched Krueppel-Like Factor; Kruppel-Like Factor 4 (Gut); Gut Kruppel-Like Factor; Krueppel-Like Factor 4; Kruppel Like Factor 4; Endothelial Kruppel-Like Zinc Finger Protein

Background

Gene Name: KLF4

NCBI Gene Entry: [9314](#)

UniProt Entry: [O43474](#)

Application Information

Molecular Weight: Predicted, 55 kDa, observed, 54 kDa

Clonality: Rabbit monoclonal antibody

Clone ID: 25GB2120

Species Reactivity: Human, mouse, rat

Applications Tested: Western blotting (WB), flow cytometry (FCM), immunocytochemistry (IC)

Immunogen

A synthesized peptide derived from human KLF4

Isotype

Rabbit IgG

Storage Buffer

Supplied in PBS (pH 7.4) containing 50% glycerol, and 0.02% sodium azide.

Storage

Store at -20 °C for one year.

Recommended Dilutions

Western blotting (WB): 1:1,000-1:5,000

Flow Cytometry (FCM): 1:2,000

Immunocytochemistry (IC): 1:100-1:1,000

Note: This product is for research use only.

SUPPORT

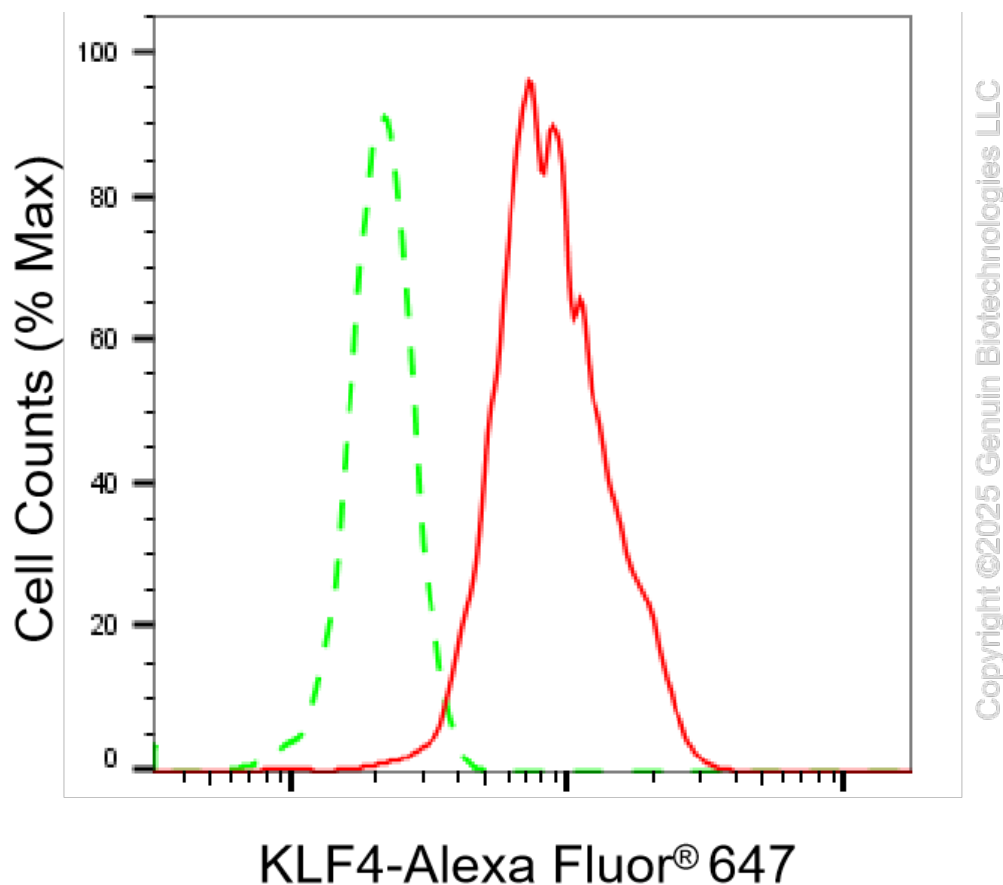
SUPPORT@GENUINBIOTECH.COM
TEL: +1-540-855-7041

ORDERS

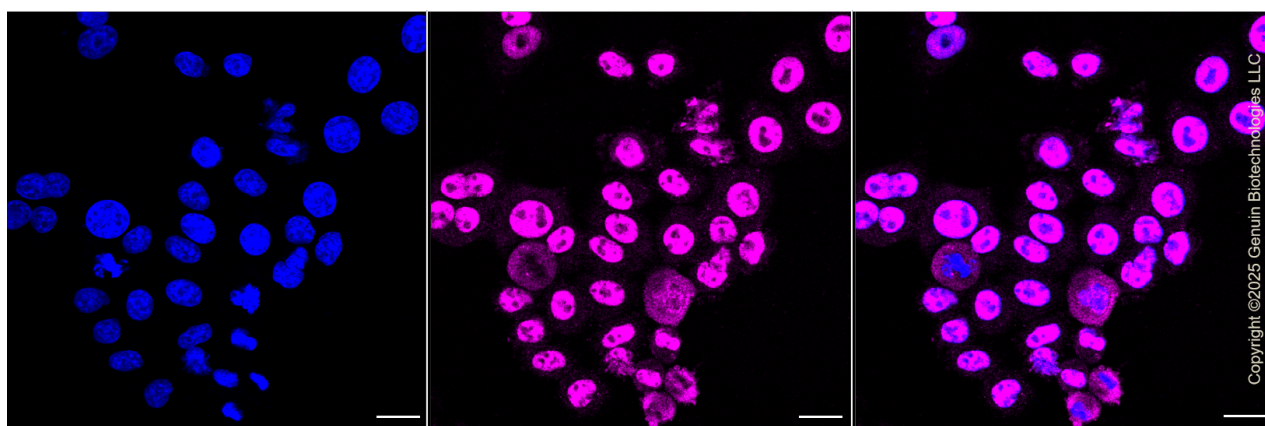
SALES@GENUINBIOTECH.COM
FAX: +1-540-855-7041

WWW.GENUINBIOTECH.COM

Validation Data



Flow cytometric analysis of KLF4 expression in HepG2 cells using KLF4 antibody (Cat#61290, 1:2,000). Green, isotype control; red, KLF4.



Immunocytochemical staining of C2C12 cells with anti-KLF4 antibody (Cat#61290, 1:1,000). Nuclei were stained blue with DAPI; KLF4 was stained magenta with Alexa Fluor® 647. Images were taken using Leica stellaris 5. Protein abundance based on laser Intensity and smart gain: Medium. Scale bar, 20 μ m.

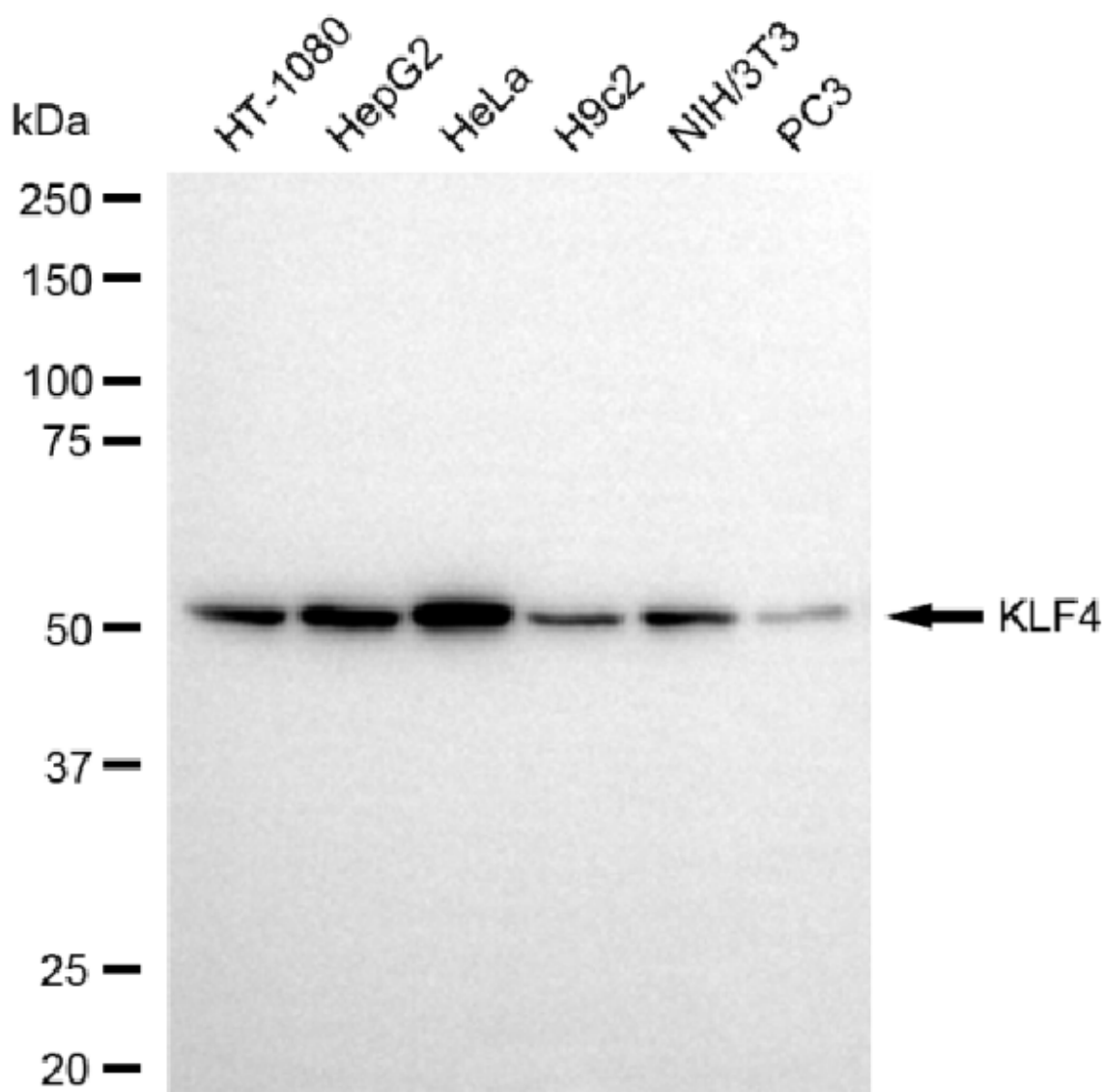
SUPPORT

SUPPORT@GENUINBIOTECH.COM
TEL: +1-540-855-7041

ORDERS

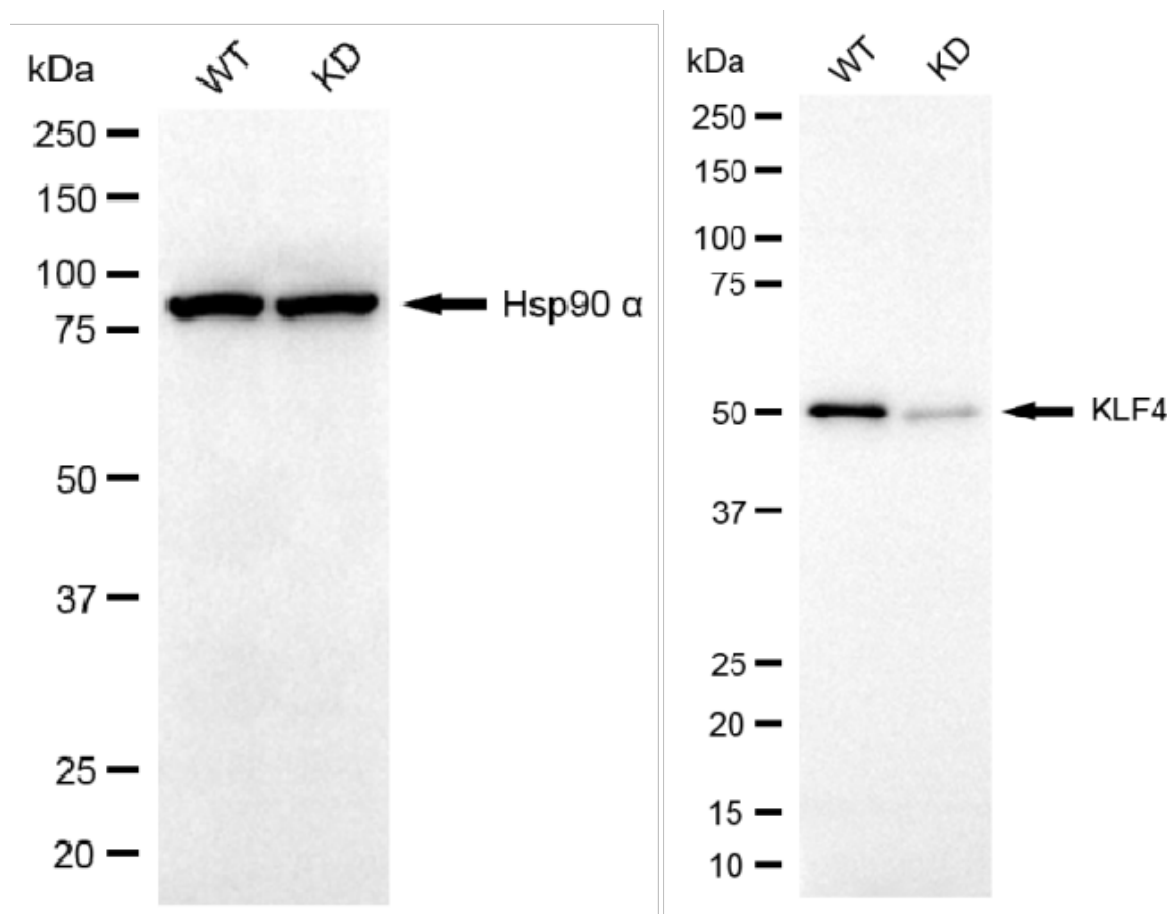
SALES@GENUINBIOTECH.COM
FAX: +1-540-855-7041

WWW.GENUINBIOTECH.COM



Copyright ©2025 Genuin Biotechnologies LLC

Western blotting analysis using anti-KLF4 antibody (Cat#61290). Total cell lysates (30 µg) from various cell lines were loaded and separated by SDS-PAGE. The blot was incubated with anti-KLF4 antibody (Cat#61290, 1:5,000) and HRP-conjugated goat anti-rabbit secondary antibody (Cat#201, 1:20,000) respectively. Image was developed using NaQ™ ECL Substrate Kit (Cat#716).



Western blotting analysis using anti-KLF4 antibody (Cat#61290). KLF4 expression in wild type (WT) and KLF4 knockdown (KD) HeLa cells with 20 µg of total cell lysates. Hsp90 α serves as a loading control. The blot was incubated with anti-KLF4 antibody (Cat#61290, 1:5,000) and HRP-conjugated goat anti-rabbit secondary antibody (Cat#201, 1:20,000) respectively. Image was developed using FeQ™ ECL Substrate Kit (Cat#226).