

KD-Validated Anti-DDB2 Recombinant Rabbit Monoclonal Antibody



Catalog #: 61292

Aliases

DDB2; Damage Specific DNA Binding Protein 2; UV-Damaged DNA-Binding Protein 2; DDB P48 Subunit; UV-DDB2; DDBB; XPE; Xeroderma Pigmentosum Group E Protein; DNA Damage-Binding Protein 2; FLJ34321; Damage-Specific DNA Binding Protein 2 (48kD); Damage-Specific DNA Binding Protein 2, 48kDa; Damage-Specific DNA-Binding Protein 2; UV-DDB; DDBb

Background

Gene Name: DDB2

NCBI Gene Entry: [1643](#)

UniProt Entry: [Q92466](#)

Application Information

Molecular Weight: Predicted, 48 kDa, observed, 45 kDa

Clonality: Rabbit monoclonal antibody

Clone ID: 23GB2805

Species Reactivity: Human

Applications Tested: Western blotting (WB), flow cytometry (FCM), immunocytochemistry (IC)

Immunogen

A synthesized peptide derived from human DDB2

Isotype

Rabbit IgG

Storage Buffer

Supplied in PBS (pH 7.4) containing 50% glycerol, and 0.02% sodium azide.

Storage

Store at -20 °C for one year.

Recommended Dilutions

Western Blotting (WB): 1:1,000-1:5,000

Flow Cytometry (FCM): 1:2,000

Immunocytochemistry (IC): 1:100-1:1,000

SUPPORT

SUPPORT@GENUINBIOTECH.COM
TEL: +1-540-855-7041

ORDERS

SALES@GENUINBIOTECH.COM
FAX: +1-540-855-7041

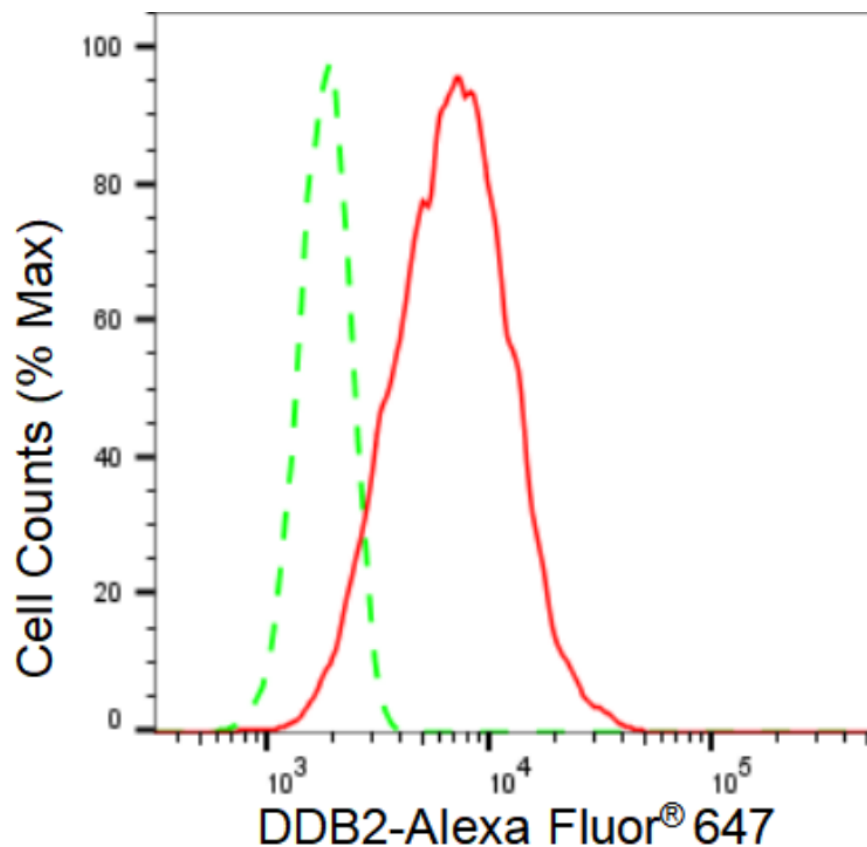
WWW.GENUINBIOTECH.COM

KD-Validated Anti-DDB2 Recombinant Rabbit Monoclonal Antibody

PAGE 2

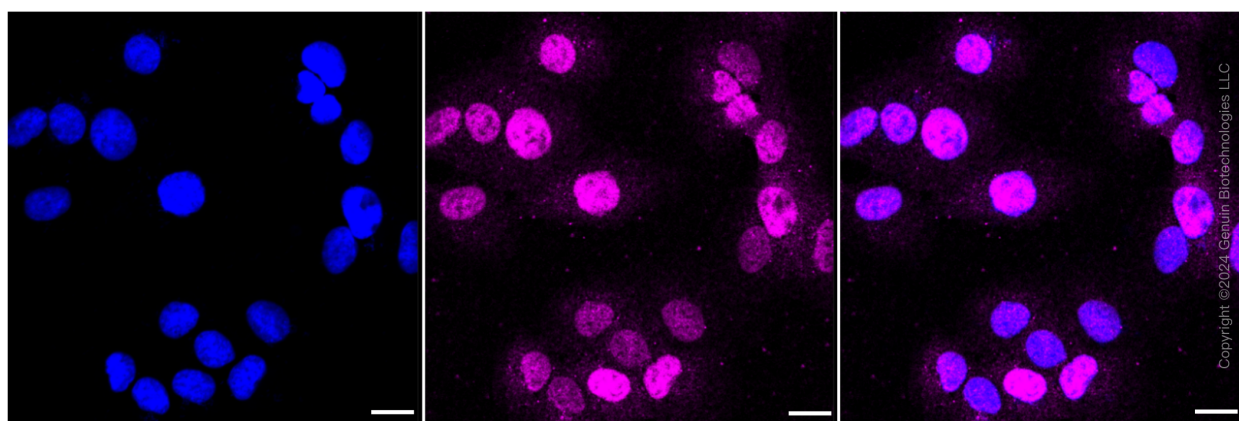
Note: This product is for research use only.

Validation Data



Copyright ©2024 Genuin Biotechnologies LLC

Flow cytometric analysis of DDB2 expression in HT-1080 cells using DDB2 antibody (Cat#61292, 1:2,000). Green, isotype control; red, DDB2.



Copyright ©2024 Genuin Biotechnologies LLC

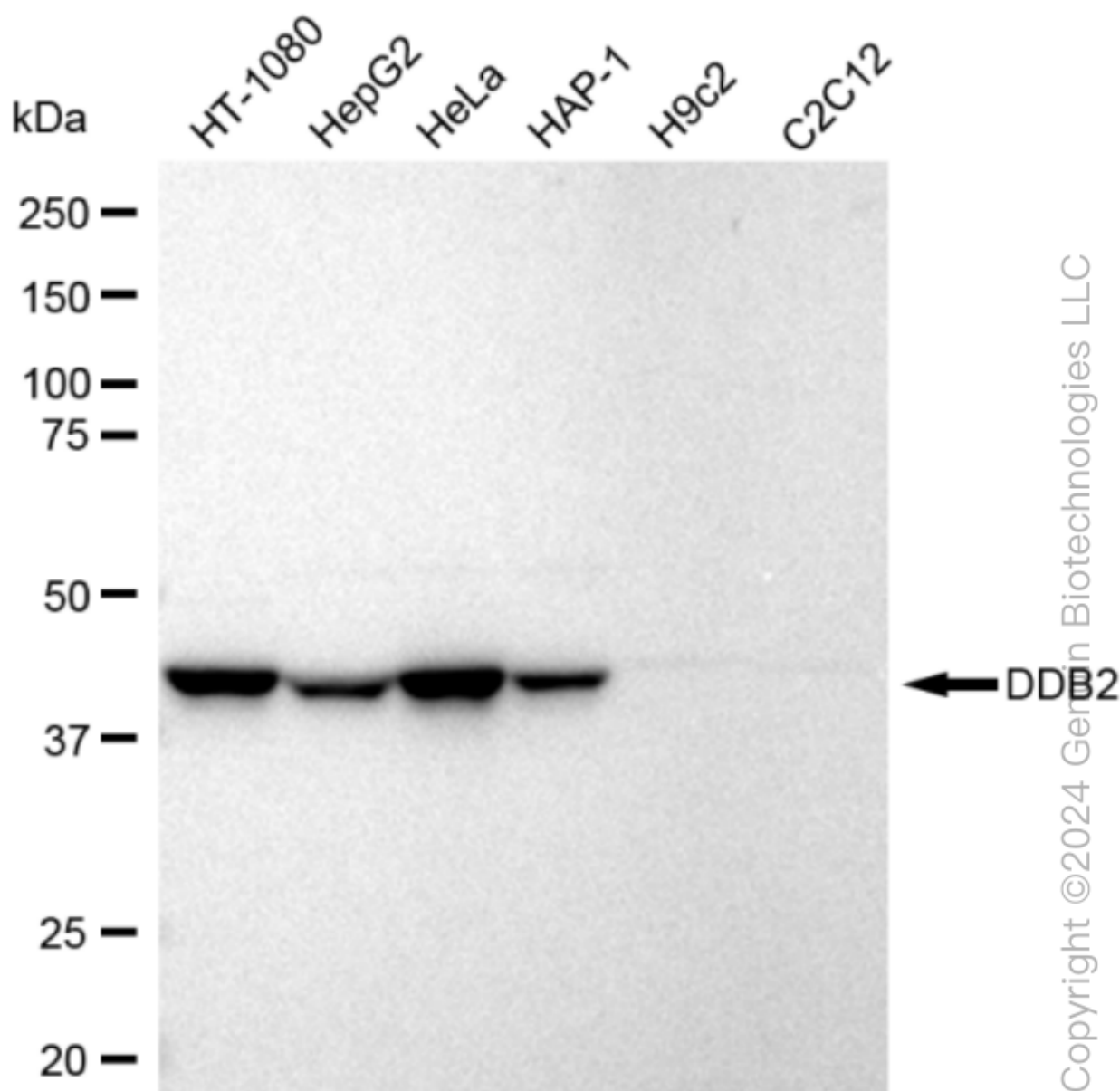
SUPPORT

SUPPORT@GENUINBIOTECH.COM
TEL: +1-540-855-7041

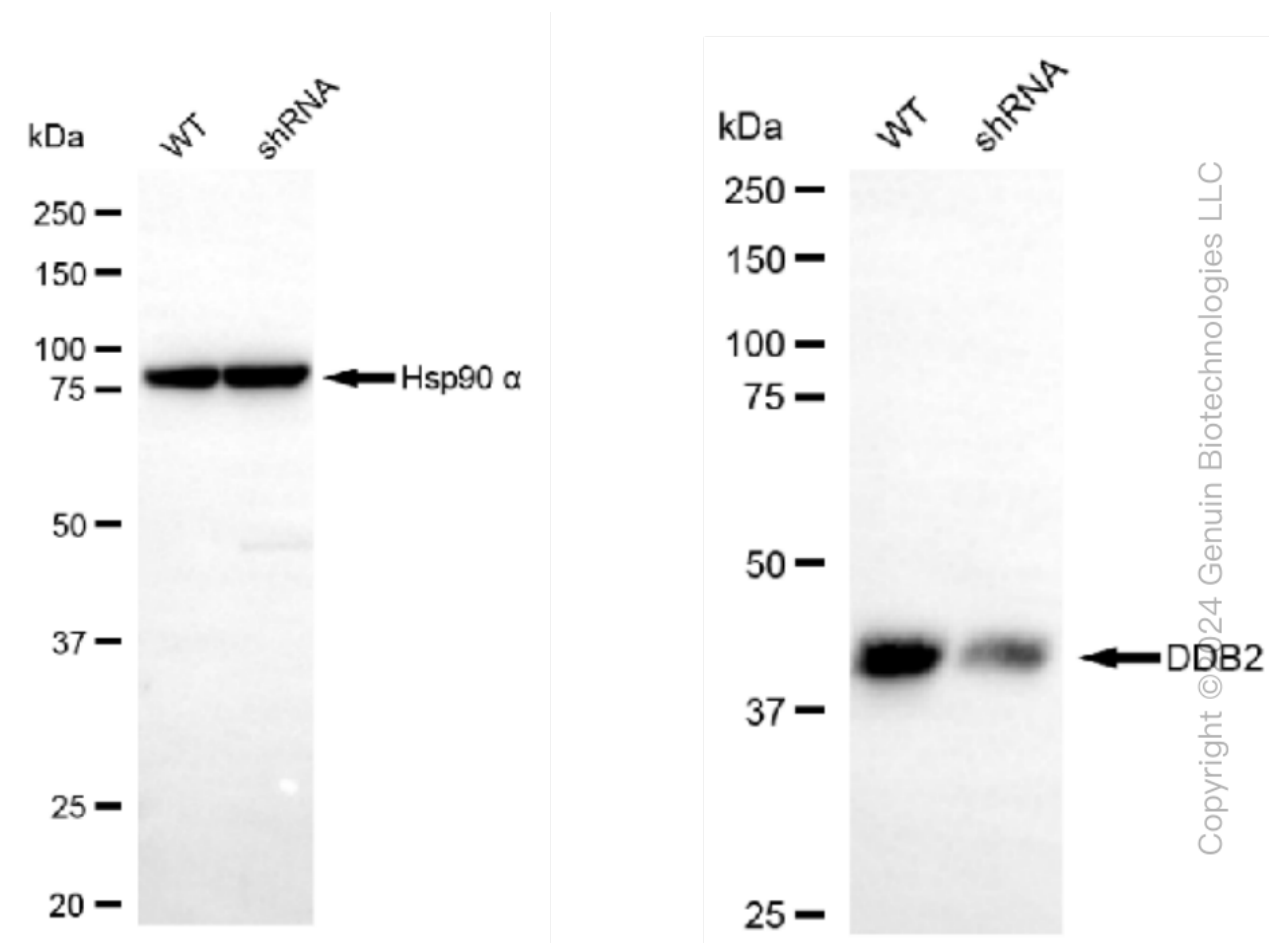
ORDERS

SALES@GENUINBIOTECH.COM
FAX: +1-540-855-7041

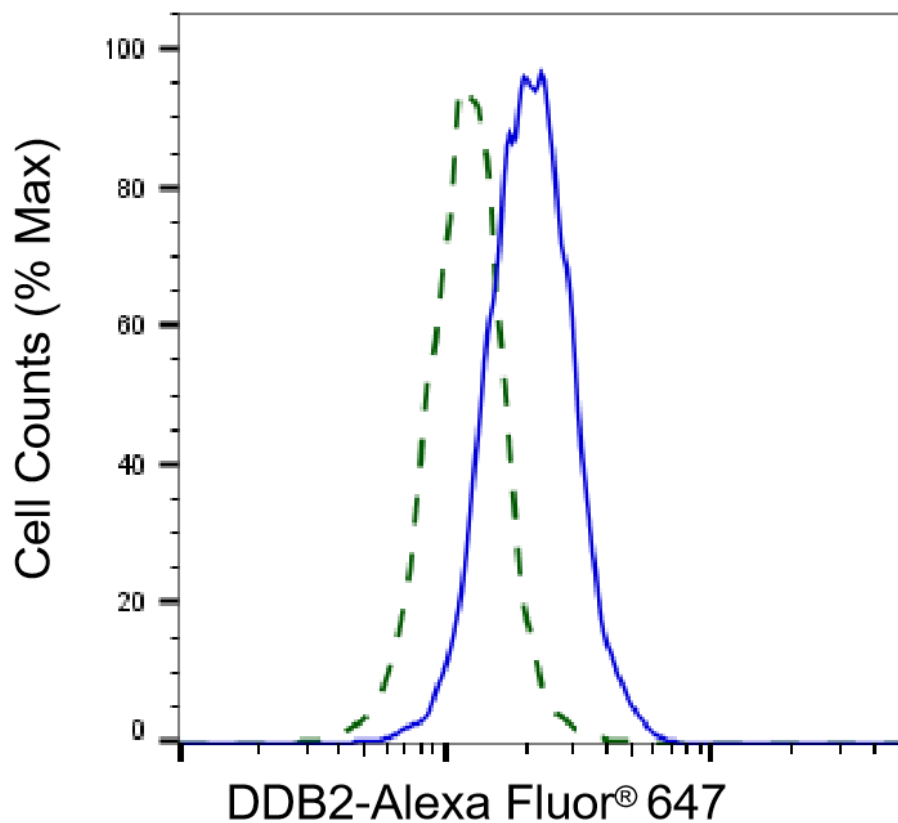
WWW.GENUINBIOTECH.COM



Western blotting analysis using anti-DDB2 antibody (Cat#61292). Total cell lysates (30 µg) from various cell lines were loaded and separated by SDS-PAGE. The blot was incubated with anti-DDB2 antibody (Cat#61292, 1:5,000) and HRP-conjugated goat anti-rabbit secondary antibody (Cat#201, 1:20,000) respectively. Image was developed using FeQ™ ECL Substrate Kit (Cat#226). DDB2, damage specific DNA binding protein 2.



Western blotting analysis using anti-DDB2 antibody (Cat#61292). DDB2 expression in wild type (WT) and DDB2 shRNA knockdown (KD) HeLa cells with 30 μ g of total cell lysates. Hsp90 α serves as a loading control. The blot was incubated with anti-DDB2 antibody (Cat#61292, 1:5,000) and HRP-conjugated goat anti-rabbit secondary antibody (Cat#201, 1:20,000) respectively. Image was developed using NaQTM ECL Substrate Kit (Cat#716).



Validation of DDB2 knockdown using flow cytometry. Wild-type(WT, Blue) and knockdown(KD, Green) HeLa cells were stained with anti-DDB2 antibody (Cat#61292, 1:2,000) and analyzed using BD flow cytometer.