

# KD-Validated Anti-RIPK1 Recombinant Rabbit Monoclonal Antibody



**Catalog #: 61293**

## Aliases

RIPK1; Receptor Interacting Serine/Threonine Kinase 1; RIP-1; RIP1; RIP; Receptor (TNFRSF)-Interacting Serine-Threonine Kinase 1; Receptor-Interacting Serine/Threonine-Protein Kinase 1; Receptor-Interacting Protein Kinase 1; Receptor-Interacting Protein 1; Cell Death Protein RIP; Serine/Threonine-Protein Kinase RIP; EC 2.7.11.1; AIEFL; IMD57

## Background

Gene Name: RIPK1

NCBI Gene Entry: [8737](#)

UniProt Entry: [Q13546](#)

## Application Information

Molecular Weight: Predicted, 76 kDa; observed, 74 kDa

Clonality: Rabbit monoclonal antibody

Clone ID: 25GB2140

Species Reactivity: Human

Applications Tested: Western blotting (WB), flow cytometry (FCM), immunocytochemistry (IC)

## Immunogen

A synthesized peptide derived from human RIP

## Isotype

Rabbit IgG

## Storage Buffer

Supplied in PBS (pH 7.4) containing 50% glycerol, and 0.02% sodium azide.

## Storage

Store at -20 °C for one year.

## Recommended Dilutions

Western blotting (WB): 1:1,000-1:5,000

Flow Cytometry (FCM): 1:2,000

Immunocytochemistry (IC): 1:100-1:1,000

---

### SUPPORT

SUPPORT@GENUINBIOTECH.COM  
TEL: +1-540-855-7041

### ORDERS

SALES@GENUINBIOTECH.COM  
FAX: +1-540-855-7041

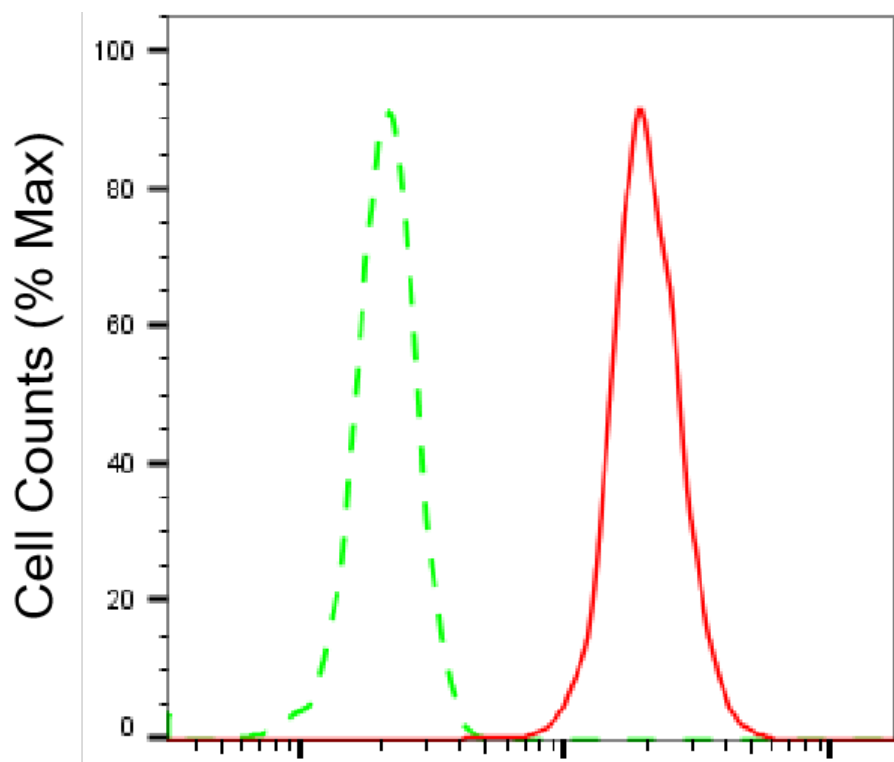
[WWW.GENUINBIOTECH.COM](http://WWW.GENUINBIOTECH.COM)

## KD-Validated Anti-RIPK1 Recombinant Rabbit Monoclonal Antibody

PAGE 2

**Note:** This product is for research use only.

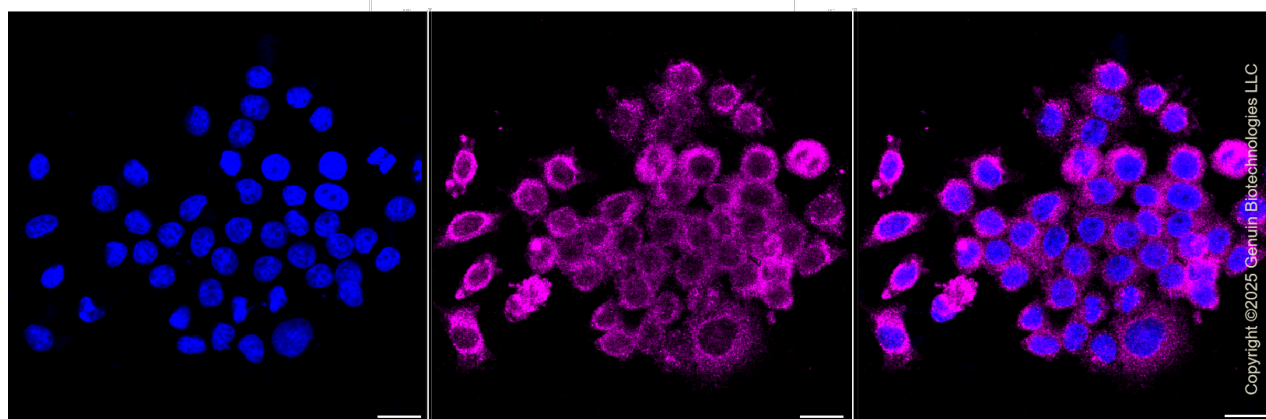
### Validation Data



Copyright ©2025 Genuin Biotechnologies LLC

### RIPK1-Alexa Fluor® 647

Flow cytometric analysis of RIPK1 expression in HepG2 cells using RIPK1 antibody (Cat#61293, 1:2,000). Green, isotype control; red, RIPK1.



Copyright ©2025 Genuin Biotechnologies LLC

Immunocytochemical staining of HepG2 cells with anti-RIPK1 antibody (Cat#61293, 1:1,000). Nuclei were stained blue with DAPI; RIPK1 was stained magenta with Alexa Fluor® 647. Images were taken using Leica stellaris 5. Protein abundance based on laser Intensity and smart gain:

#### SUPPORT

SUPPORT@GENUINBIOTECH.COM  
TEL: +1-540-855-7041

#### ORDERS

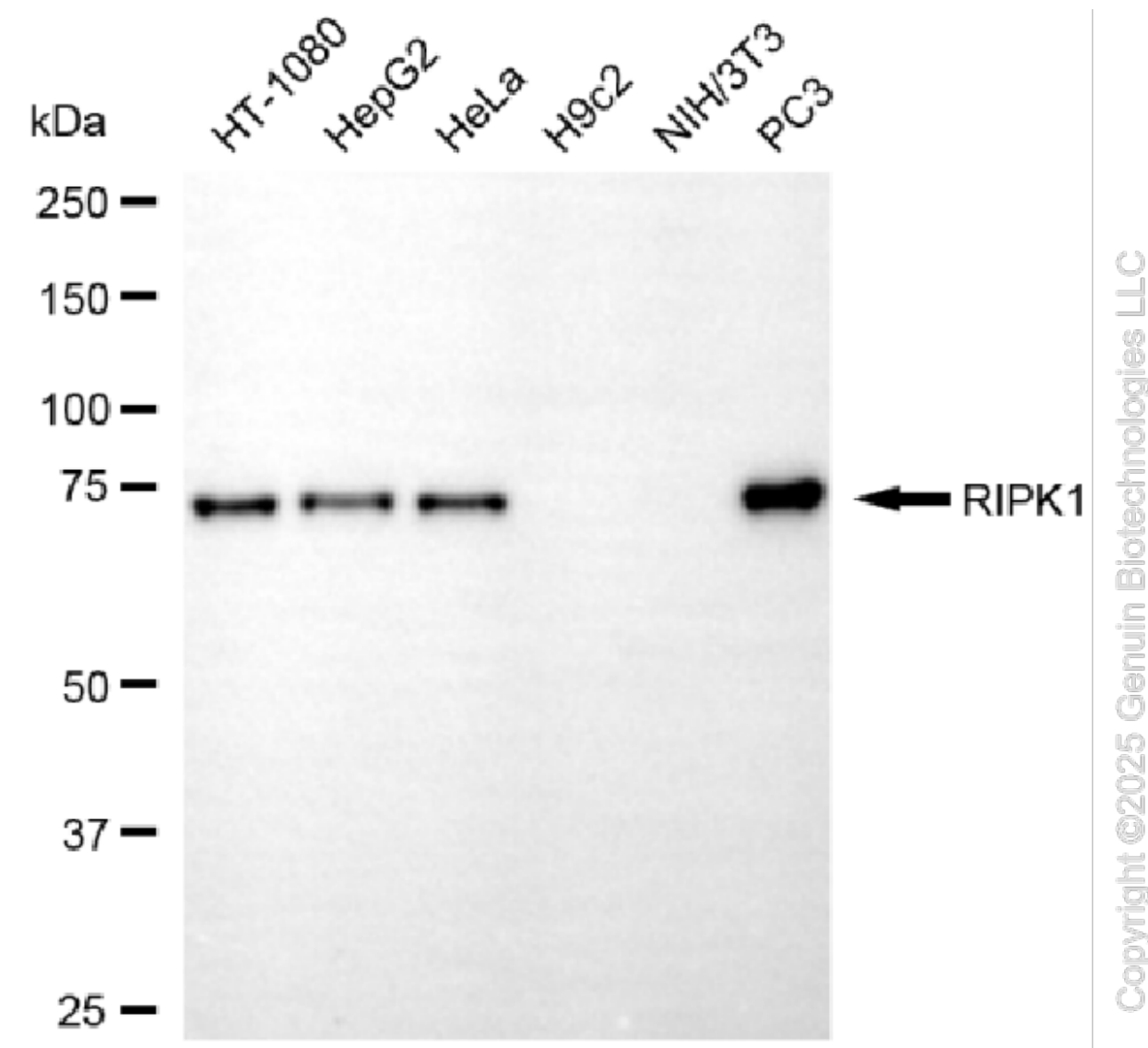
SALES@GENUINBIOTECH.COM  
FAX: +1-540-855-7041

[WWW.GENUINBIOTECH.COM](http://WWW.GENUINBIOTECH.COM)

## KD-Validated Anti-RIPK1 Recombinant Rabbit Monoclonal Antibody

PAGE 3

Medium. Scale bar, 20  $\mu$ m.



Western blotting analysis using anti-RIPK1 antibody (Cat#61293). Total cell lysates (30  $\mu$ g) from various cell lines were loaded and separated by SDS-PAGE. The blot was incubated with anti-RIPK1 antibody (Cat#61293, 1:5,000) and HRP-conjugated goat anti-rabbit secondary antibody (Cat#201, 1:20,000) respectively. Image was developed using NaQ<sup>TM</sup> ECL Substrate Kit (Cat#716).

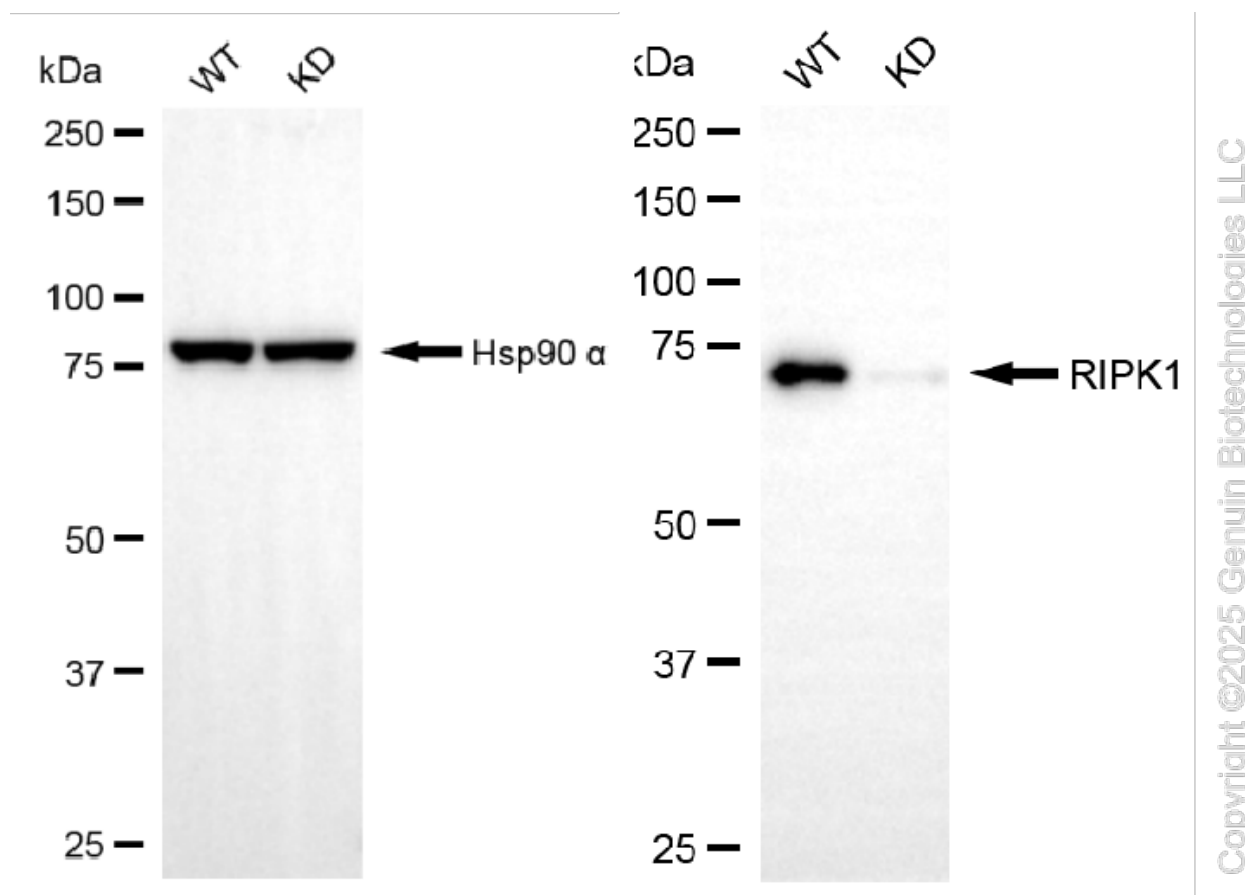
### SUPPORT

SUPPORT@GENUINBIOTECH.COM  
TEL: +1-540-855-7041

### ORDERS

SALES@GENUINBIOTECH.COM  
FAX: +1-540-855-7041

[WWW.GENUINBIOTECH.COM](http://WWW.GENUINBIOTECH.COM)



Western blotting analysis using anti-RIPK1 antibody (Cat#61293). RIPK1 expression in wild-type (WT) and RIPK1 knockdown (KD) 293T cells with 20 µg of total cell lysates. Hsp90 α serves as a loading control. The blot was incubated with anti-RIPK1 antibody (Cat#61293, 1:5,000) and HRP-conjugated goat anti-rabbit secondary antibody (Cat#201, 1:20,000) respectively. Image was developed using NaQ™ ECL Substrate Kit (Cat#716).