

KD-Validated Anti-PI3 Kinase p85 alpha Recombinant Rabbit Monoclonal Antibody



Catalog #: 61298

Aliases

PIK3R1; Phosphoinositide-3-Kinase Regulatory Subunit 1; GRB1; P85-ALPHA; P85; Phosphatidylinositol 3-Kinase 85 KDa Regulatory Subunit Alpha; Phosphoinositide-3-Kinase, Regulatory Subunit 1 (Alpha); Phosphatidylinositol 3-Kinase Regulatory Subunit Alpha; Phosphoinositide-3-Kinase Regulatory Subunit Alpha; PtdIns-3-Kinase Regulatory Subunit Alpha; Growth Factor Receptor Bound 1; PI3K Regulatory Subunit Alpha; PI3-Kinase Subunit P85-Alpha; PI3 Kinase-Associated P85; P85alpha; Phosphatidylinositol 3-Kinase, Regulatory Subunit, Polypeptide 1 (P85 Alpha); Phosphatidylinositol 3-Kinase-Associated P-85 Alpha; PtdIns-3-Kinase Regulatory Subunit P85-Alpha; PI3-Kinase Regulatory Subunit Alpha; P85ALPHA; IMD36; AGM7

Background

Gene Name: PIK3R1

NCBI Gene Entry: [5295](#)

UniProt Entry: [P27986](#)

Application Information

Molecular Weight: Predicted, 84 kDa; observed, 75 kDa

Clonality: Rabbit monoclonal antibody

Clone ID: 25GB2155

Species Reactivity: Human, mouse, rat

Applications Tested: Western blotting (WB), flow cytometry (FCM)

Immunogen

A synthesized peptide derived from human PI3 Kinase p85 alpha

Isotype

Rabbit IgG

Storage Buffer

Supplied in PBS (pH 7.4) containing 50% glycerol, and 0.02% sodium azide.

Storage

Store at -20 °C for one year.

Recommended Dilutions

SUPPORT

SUPPORT@GENUINBIOTECH.COM
TEL: +1-540-855-7041

ORDERS

SALES@GENUINBIOTECH.COM
FAX: +1-540-855-7041

WWW.GENUINBIOTECH.COM

KD-Validated Anti-PI3 Kinase p85 alpha Recombinant Rabbit Monoclonal Antibody

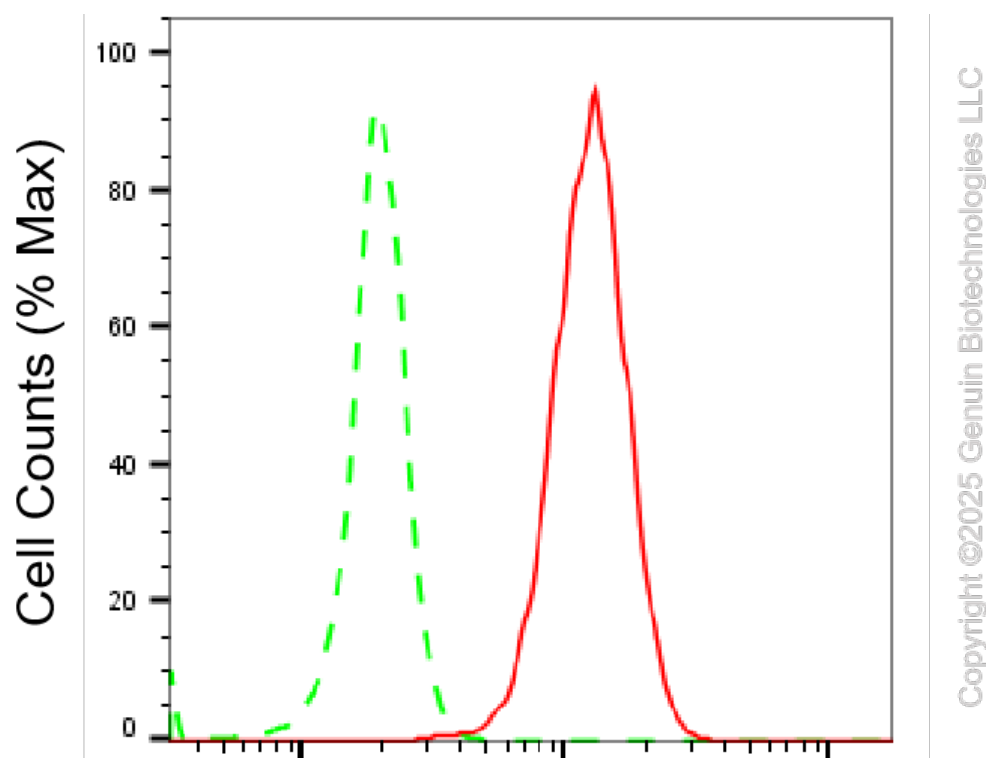
PAGE 2

Western Blotting (WB): 1:2,000-1:10,000

Flow Cytometry (FCM): 1:2,000

Note: This product is for research use only.

Validation Data



PI3 Kinase p85 alpha-Alexa Fluor® 647

Flow cytometric analysis of PI3 Kinase p85 alpha expression in C2C12 cells using PI3 Kinase p85 alpha antibody (Cat#61298, 1:2,000). Green, isotype control; red, PI3 Kinase p85 alpha.

SUPPORT

SUPPORT@GENUINBIOTECH.COM
TEL: +1-540-855-7041

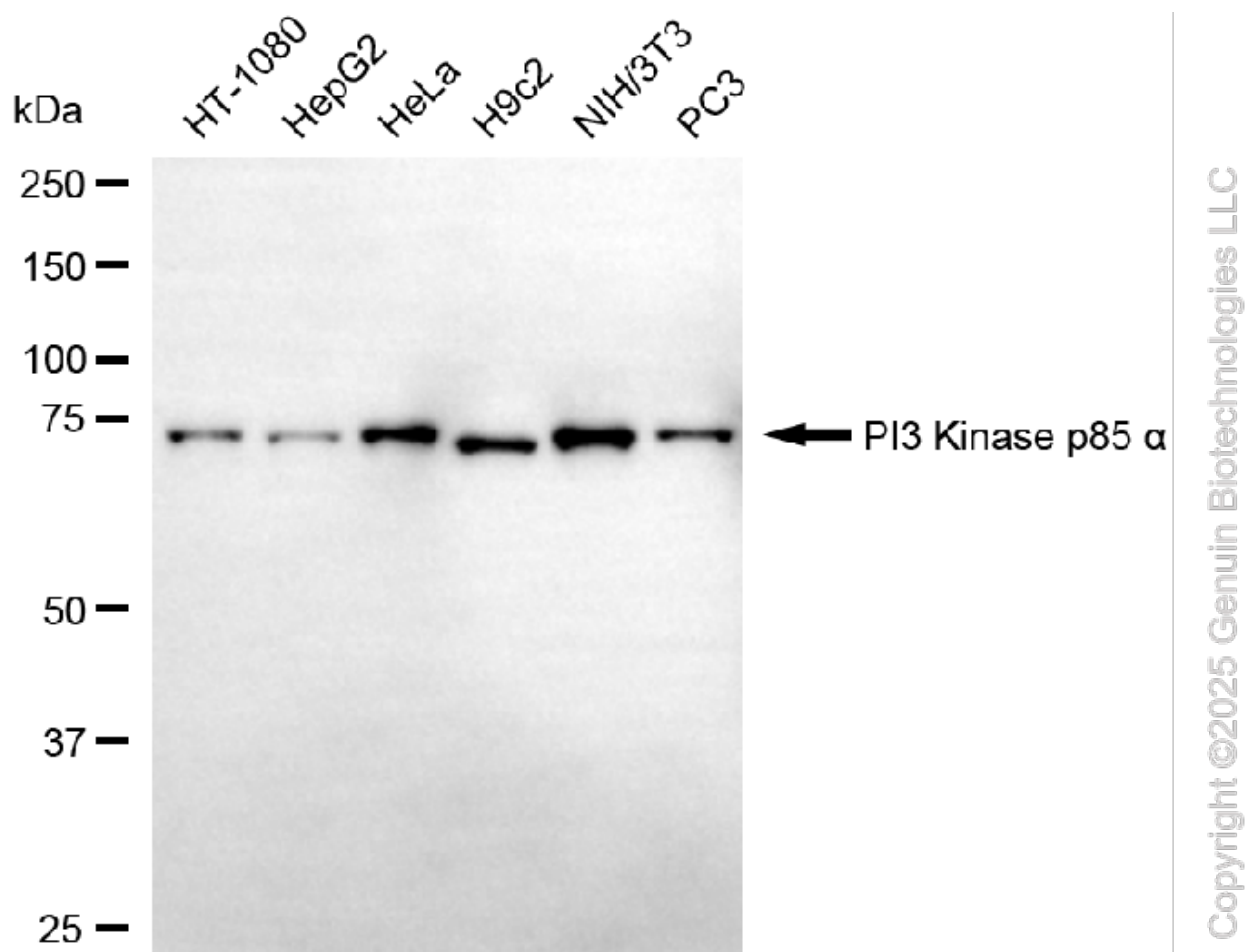
ORDERS

SALES@GENUINBIOTECH.COM
FAX: +1-540-855-7041

WWW.GENUINBIOTECH.COM

KD-Validated Anti-PI3 Kinase p85 alpha Recombinant Rabbit Monoclonal Antibody

PAGE 3



Western blotting analysis using anti-PI3 Kinase p85 alpha antibody (Cat#61298). Total cell lysates (30 µg) from various cell lines were loaded and separated by SDS-PAGE. The blot was incubated with anti-PI3 Kinase p85 alpha antibody (Cat#61298, 1:10,000) and HRP-conjugated goat anti-rabbit secondary antibody (Cat#201, 1:20,000) respectively. Image was developed using FeQ™ ECL Substrate Kit (Cat#226).

SUPPORT

SUPPORT@GENUINBIOTECH.COM
TEL: +1-540-855-7041

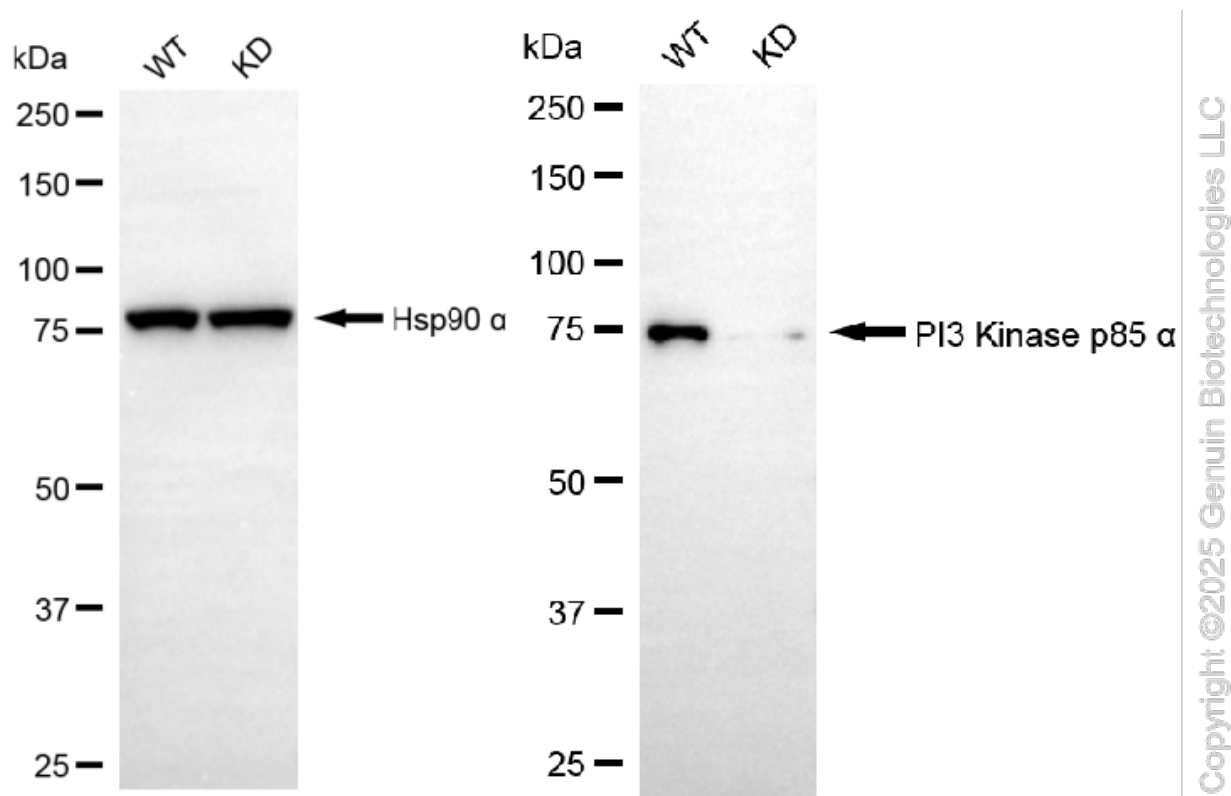
ORDERS

SALES@GENUINBIOTECH.COM
FAX: +1-540-855-7041

WWW.GENUINBIOTECH.COM

KD-Validated Anti-PI3 Kinase p85 alpha Recombinant Rabbit Monoclonal Antibody

PAGE 4



Western blotting analysis using anti-PI3 Kinase p85 alpha antibody (Cat#61298). PI3 Kinase p85 alpha expression in wild-type (WT) and PIK3R1 knockdown (KD) 293T cells with 20 μ g of total cell lysates. Hsp90 α serves as a loading control. The blot was incubated with anti-PI3 Kinase p85 alpha antibody (Cat#61298, 1:5,000) and HRP-conjugated goat anti-rabbit secondary antibody (Cat#201, 1:20,000) respectively. Image was developed using NaQTM ECL Substrate Kit (Cat#716).

SUPPORT

SUPPORT@GENUINBIOTECH.COM
TEL: +1-540-855-7041

ORDERS

SALES@GENUINBIOTECH.COM
FAX: +1-540-855-7041

WWW.GENUINBIOTECH.COM