

# KD-Validated Anti-Complement C3 Recombinant Rabbit Monoclonal Antibody



**Catalog #: 61300**

## Aliases

C1QBP; Complement C3; CPAMD1; ARMD9; C3 And PZP-Like Alpha-2-Macroglobulin Domain-Containing Protein 1; Complement Component C3a; Complement Component C3b; Complement Component 3; C3a Anaphylatoxin; Prepro-C3; C3a; C3b; Epididymis Secretory Sperm Binding Protein Li 62p; Acylation-Stimulating Protein Cleavage Product; HEL-S-62p; AHUS5; ASP; C3A; C3B

## Background

Gene Name: C3

NCBI Gene Entry: [718](#)

UniProt Entry: [P01024](#)

## Application Information

Molecular Weight: Predicted, 187 kDa, observed, 187 kDa

Clonality: Rabbit monoclonal antibody

Clone ID: 23GB1285

Species Reactivity: Human

Applications Tested: Western blotting (WB), immunocytochemistry (IC)

## Immunogen

A synthesized peptide derived from human C3 / C3a

## Isotype

Rabbit IgG

## Storage Buffer

Supplied in PBS (pH 7.4) containing 50% glycerol, and 0.02% sodium azide.

## Storage

Store at -20 °C for one year.

## Recommended Dilutions

Western Blotting (WB): 1:1,000-1:5,000

Immunocytochemistry (IC): 1:100-1:1,000

---

### SUPPORT

SUPPORT@GENUINBIOTECH.COM  
TEL: +1-540-855-7041

### ORDERS

SALES@GENUINBIOTECH.COM  
FAX: +1-540-855-7041

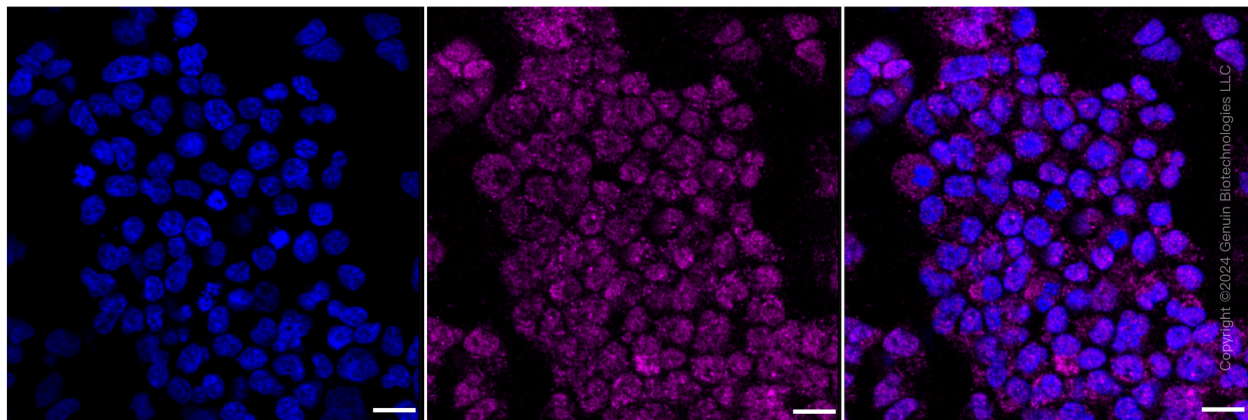
[WWW.GENUINBIOTECH.COM](http://WWW.GENUINBIOTECH.COM)

## KD-Validated Anti-Complement C3 Recombinant Rabbit Monoclonal Antibody

PAGE 2

**Note:** This product is for research use only.

### Validation Data



Immunocytochemical staining of HeLa cells with Complement C3 antibody (Cat#61300, 1:1,000). Nuclei were stained blue with DAPI; Complement C3 was stained magenta with Alexa Fluor® 647. Images were taken using Leica stellaris 5. Protein abundance based on laser Intensity and smart gain: Medium. Scale bar: 20  $\mu$ m.

---

#### SUPPORT

SUPPORT@GENUINBIOTECH.COM  
TEL: +1-540-855-7041

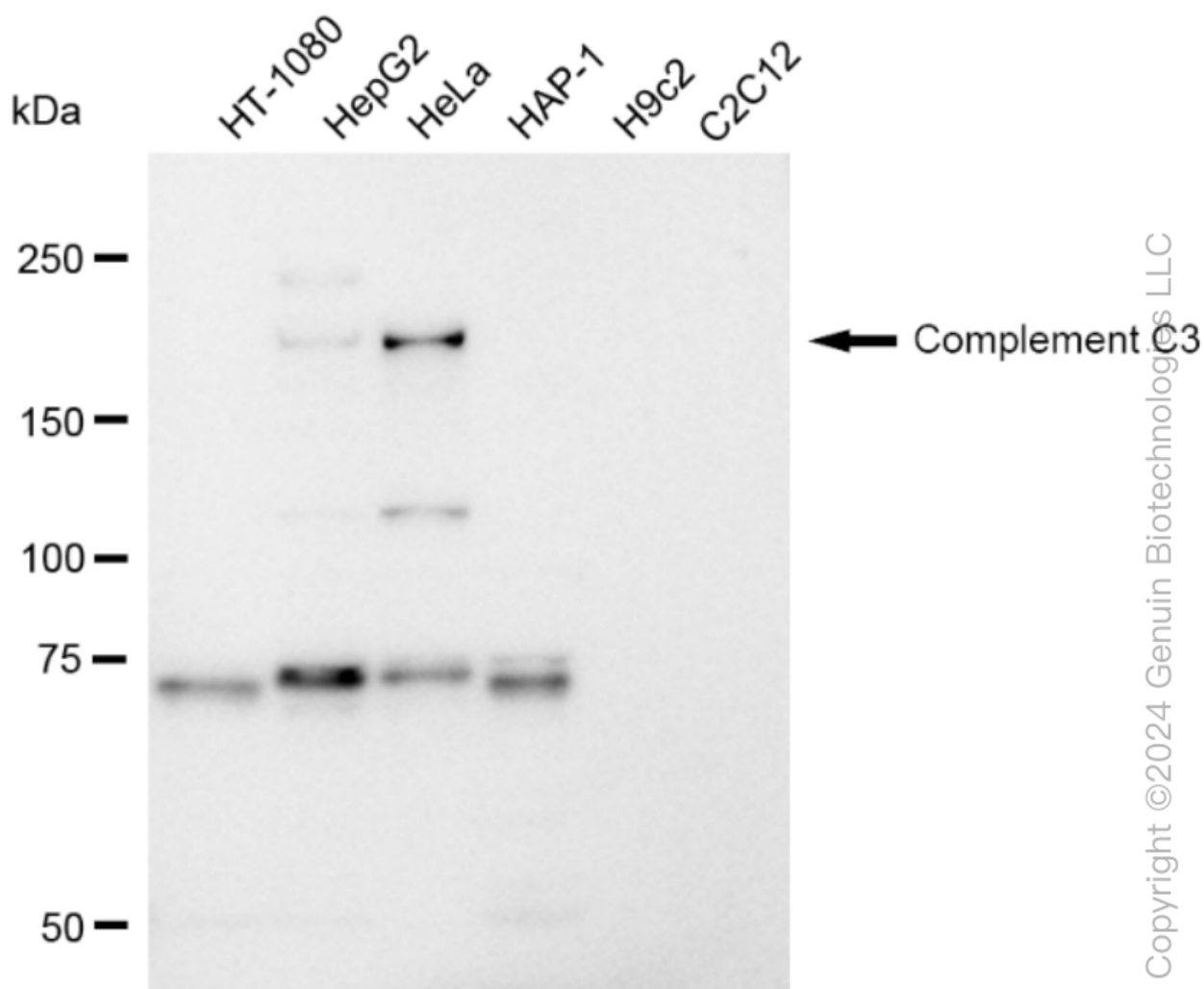
#### ORDERS

SALES@GENUINBIOTECH.COM  
FAX: +1-540-855-7041

[WWW.GENUINBIOTECH.COM](http://WWW.GENUINBIOTECH.COM)

## KD-Validated Anti-Complement C3 Recombinant Rabbit Monoclonal Antibody

PAGE 3



Western blotting analysis using anti-Complement C3 antibody (Cat#61300). Total cell lysates (30 µg) from various cell lines were loaded and separated by SDS-PAGE. The blot was incubated with anti-Complement C3 antibody (Cat#61300, 1:5,000) and HRP-conjugated goat anti-rabbit secondary antibody (Cat#201, 1:20,000) respectively. Image was developed using FeQ™ ECL Substrate Kit (Cat#226).

### SUPPORT

SUPPORT@GENUINBIOTECH.COM  
TEL: +1-540-855-7041

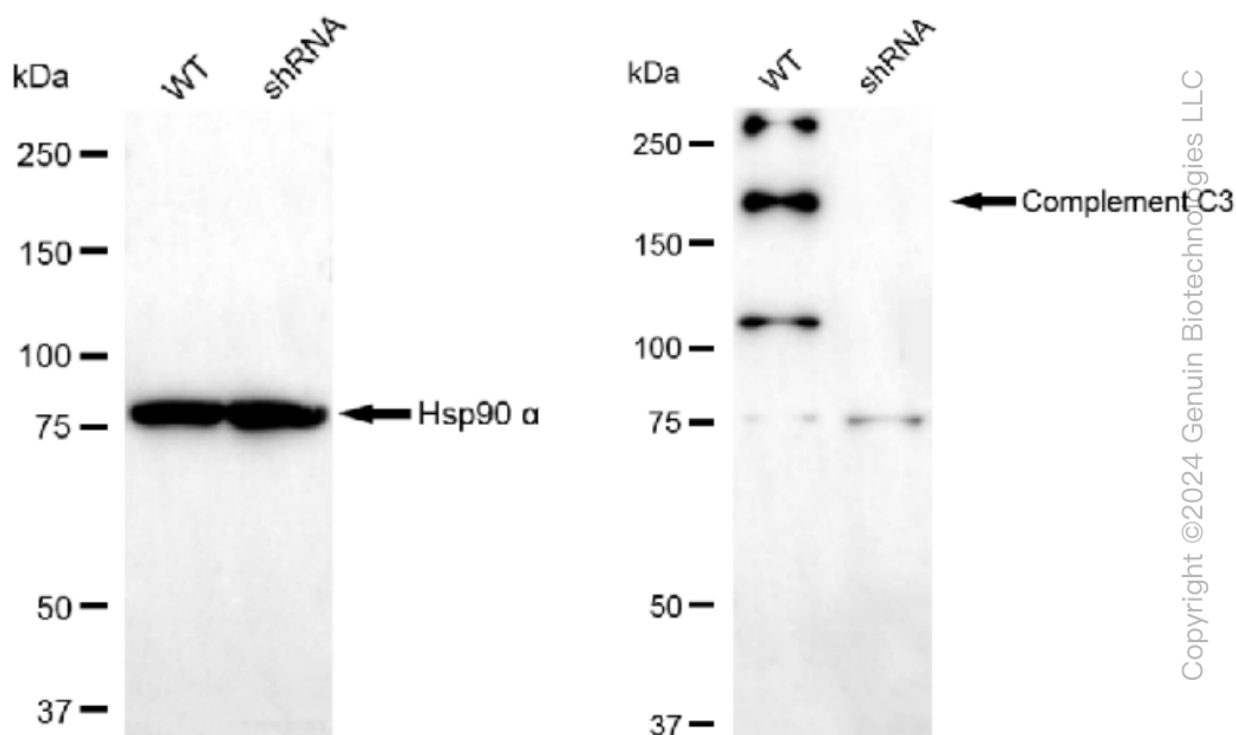
### ORDERS

SALES@GENUINBIOTECH.COM  
FAX: +1-540-855-7041

[WWW.GENUINBIOTECH.COM](http://WWW.GENUINBIOTECH.COM)

## KD-Validated Anti-Complement C3 Recombinant Rabbit Monoclonal Antibody

PAGE 4



Western blotting analysis using anti-Complement C3 antibody (Cat#61300). Complement C3 expression in wild type (WT) and complement C3 shRNA knockdown (KD) Hela cells with 30 µg of total cell lysates. Hsp90 α serves as a loading control. The blot was incubated with anti-Complement C3 antibody (Cat#61300, 1:5,000) and HRP-conjugated goat anti-rabbit secondary antibody (Cat#201, 1:20,000) respectively. Image was developed using FeQ™ ECL Substrate Kit (Cat#226).

### SUPPORT

SUPPORT@GENUINBIOTECH.COM  
TEL: +1-540-855-7041

### ORDERS

SALES@GENUINBIOTECH.COM  
FAX: +1-540-855-7041

[WWW.GENUINBIOTECH.COM](http://WWW.GENUINBIOTECH.COM)