

# KD-Validated Anti-FURIN Recombinant Rabbit Monoclonal Antibody



**Catalog #: 61301**

## Aliases

FURIN; Furin, Paired Basic Amino Acid Cleaving Enzyme; PCSK3; SPC1; PACE; FUR; Paired Basic Amino Acid Residue-Cleaving Enzyme 3; Proprotein Convertase Subtilisin/Kexin 3; Subtilisin-Like Proprotein Convertase 1; EC 3.4.21.75; Furin; Paired Basic Amino Acid Cleaving Enzyme (Furin, Membrane Associated Receptor Protein); Furin (Paired Basic Amino Acid Cleaving Enzyme); Proprotein Convertase Subtilisin/Kexin Type 3; Furin, Membrane Associated Receptor Protein; Dibasic Processing Enzyme; Dibasic-Processing Enzyme; FES Upstream Region; EC 3.4.21

## Background

Gene Name: FURIN

NCBI Gene Entry: [5045](#)

UniProt Entry: [P09958](#)

## Application Information

Molecular Weight: Predicted, 87 kDa, observed, 75 kDa

Clonality: Rabbit monoclonal antibody

Clone ID: 25GB2160

Species Reactivity: Human, mouse, rat

Applications Tested: Western blotting (WB), flow cytometry (FCM), immunocytochemistry (IC)

## Immunogen

A synthesized peptide derived from human Furin

## Isotype

Rabbit IgG

## Storage Buffer

Supplied in PBS (pH 7.4) containing 50% glycerol, and 0.02% sodium azide.

## Storage

Store at -20 °C for one year.

## Recommended Dilutions

Western blotting (WB): 1:1,000-1:5,000

Flow Cytometry (FCM): 1:2,000

---

### SUPPORT

SUPPORT@GENUINBIOTECH.COM  
TEL: +1-540-855-7041

### ORDERS

SALES@GENUINBIOTECH.COM  
FAX: +1-540-855-7041

[WWW.GENUINBIOTECH.COM](http://WWW.GENUINBIOTECH.COM)

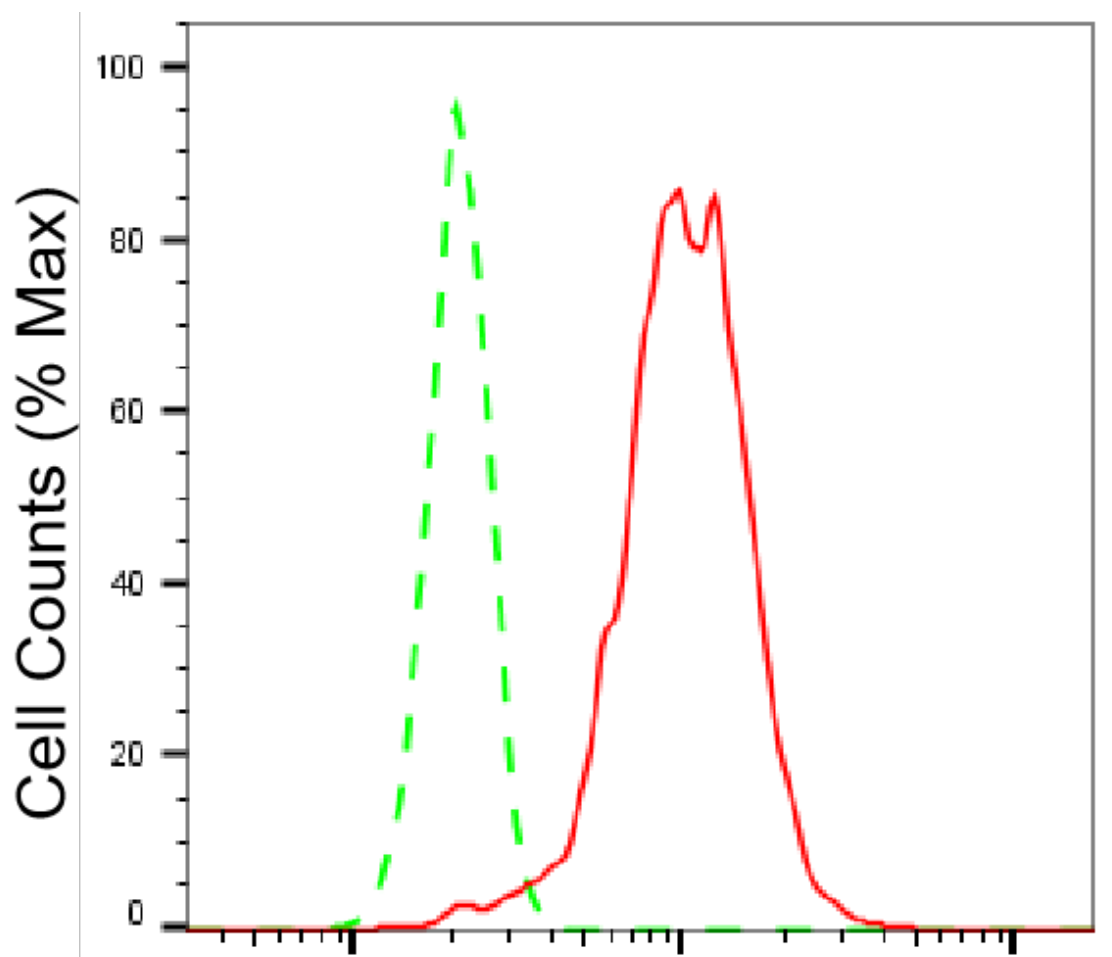
# KD-Validated Anti-FURIN Recombinant Rabbit Monoclonal Antibody

PAGE 2

Immunocytochemistry (IC): 1:100-1:1,000

**Note:** This product is for research use only.

## Validation Data



## FURIN-Alexa Fluor® 647

Flow cytometric analysis of FURIN expression in HeLa cells using FURIN antibody (Cat#61301, 1:2,000). Green, isotype control; red, FURIN.

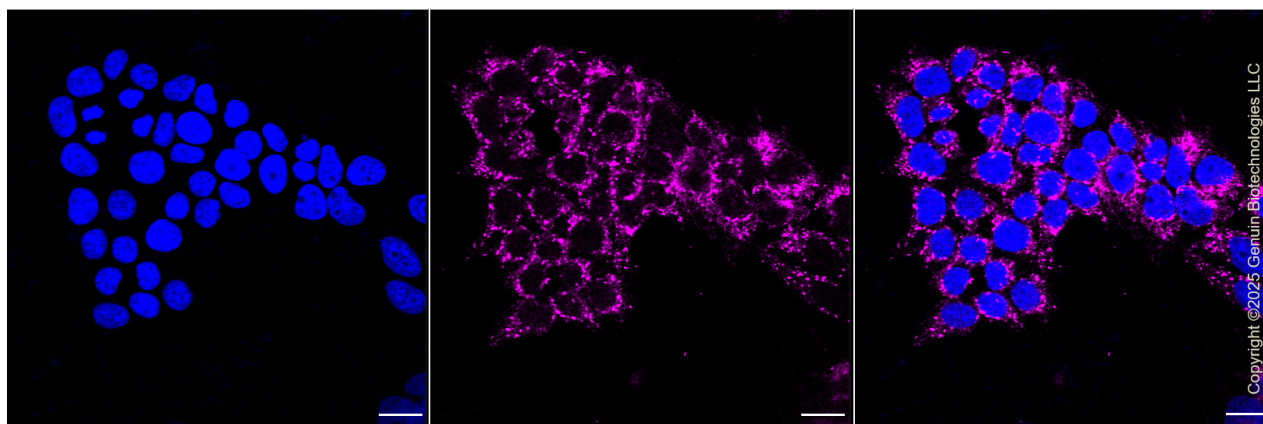
### SUPPORT

SUPPORT@GENUINBIOTECH.COM  
TEL: +1-540-855-7041

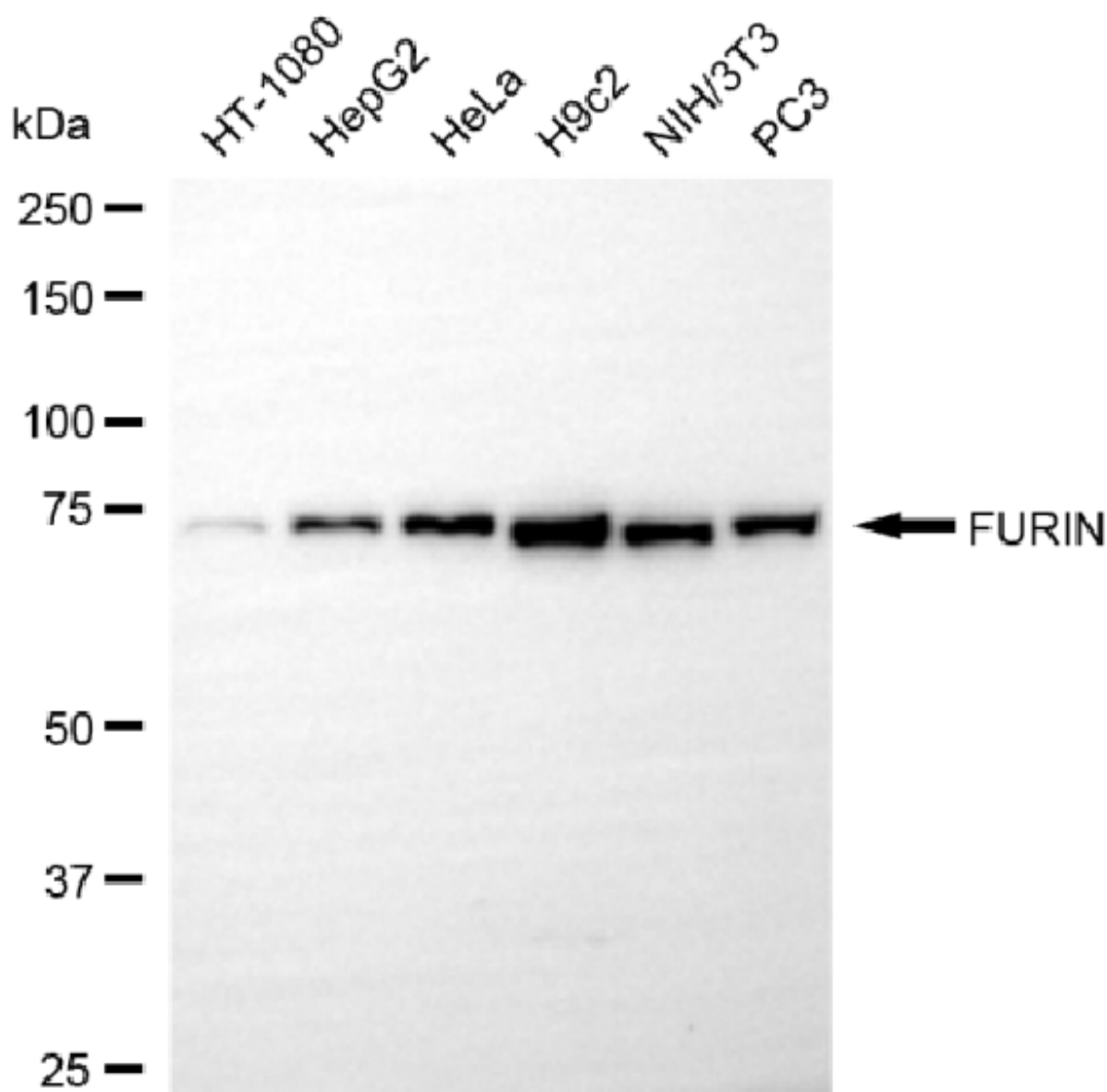
### ORDERS

SALES@GENUINBIOTECH.COM  
FAX: +1-540-855-7041

WWW.GENUINBIOTECH.COM



Immunocytochemical staining of HeLa cells with FURIN antibody (Cat#61301, 1:1,000). Nuclei were stained blue with DAPI; FURIN was stained magenta with Alexa Fluor® 647. Images were taken using Leica stellaris 5. Protein abundance based on laser Intensity and smart gain: Medium. Scale bar, 20  $\mu$ m.

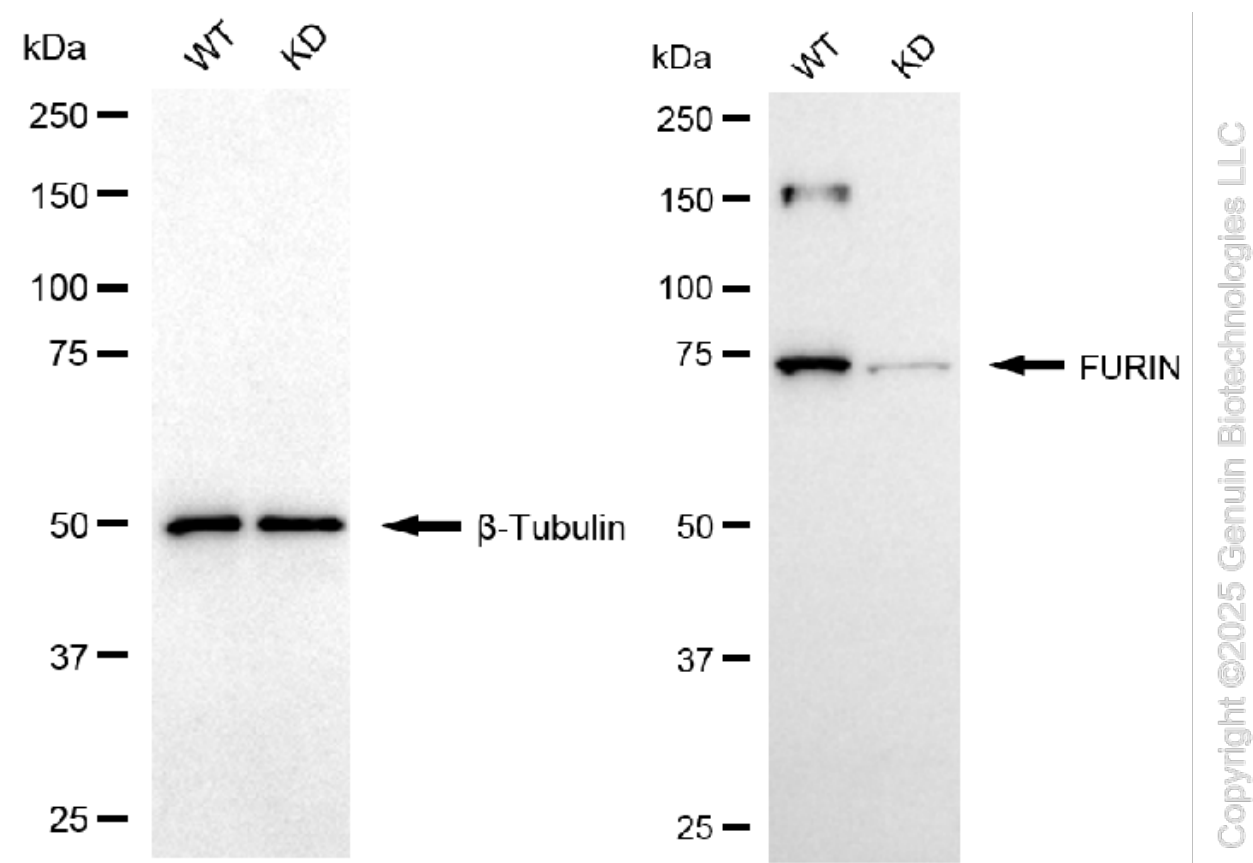


Copyright ©2025 Genuin Biotechnologies LLC

Western blotting analysis using anti-FURIN antibody (Cat#61301). Total cell lysates (30 µg) from various cell lines were loaded and separated by SDS-PAGE. The blot was incubated with anti-FURIN antibody (Cat#61301, 1:5,000) and HRP-conjugated goat anti rabbit secondary antibody (Cat#201, 1:20,000) respectively. Image was developed using NaQ™ ECL Substrate Kit (Cat#716).

## KD-Validated Anti-FURIN Recombinant Rabbit Monoclonal Antibody

PAGE 5



Western blotting analysis using anti-FURIN antibody (Cat#61301). FURIN expression in wild-type (WT) and FURIN knockdown (KD) HeLa cells with 20  $\mu$ g of total cell lysates.  $\beta$ -Tubulin serves as a loading control. The blot was incubated with anti-FURIN antibody (Cat#61301, 1:5,000) and HRP-conjugated goat anti-rabbit secondary antibody (Cat#201, 1:20,000) respectively. Image was developed using NaQ™ ECL Substrate Kit (Cat#716).

### SUPPORT

SUPPORT@GENUINBIOTECH.COM  
TEL: +1-540-855-7041

### ORDERS

SALES@GENUINBIOTECH.COM  
FAX: +1-540-855-7041

[WWW.GENUINBIOTECH.COM](http://WWW.GENUINBIOTECH.COM)