

KD-Validated Anti-SDHA Recombinant Rabbit Monoclonal Antibody



Catalog #: 61306

Aliases

SDHA; Succinate Dehydrogenase Complex Flavoprotein Subunit A; SDHF; Flavoprotein Subunit Of Complex II; SDH2; FP; Succinate Dehydrogenase [Ubiquinone] Flavoprotein Subunit, Mitochondria; Succinate Dehydrogenase Complex, Subunit A, Flavoprotein (Fp); Succinate Dehydrogenase Complex Subunit A, Flavoprotein (Fp); Succinate Dehydrogenase [Ubiquinone] Flavoprotein Subunit; EC 1.3.5.1; CMD1GG; MC2DN1; NDAXOA; PGL5; SDH1; Fp

Background

Gene Name: SDHA

NCBI Gene Entry: [6389](#)

UniProt Entry: [P31040](#)

Application Information

Molecular Weight: Predicted, 73 kDa; observed, 72 kDa

Clonality: Rabbit monoclonal antibody

Clone ID: 25GB2180

Species Reactivity: Human, mouse, rat

Applications Tested: Western blotting (WB), flow cytometry (FCM), immunocytochemistry (IC)

Immunogen

A synthesized peptide derived from human SDHA

Isotype

Rabbit IgG

Storage Buffer

Supplied in PBS (pH 7.4) containing 50% glycerol, and 0.02% sodium azide.

Storage

Store at -20 °C for one year.

Recommended Dilutions

Western blotting (WB): 1:1,000-1:5,000

Flow Cytometry (FCM): 1:2,000

Immunocytochemistry (IC): 1:100-1:1,000

SUPPORT

SUPPORT@GENUINBIOTECH.COM
TEL: +1-540-855-7041

ORDERS

SALES@GENUINBIOTECH.COM
FAX: +1-540-855-7041

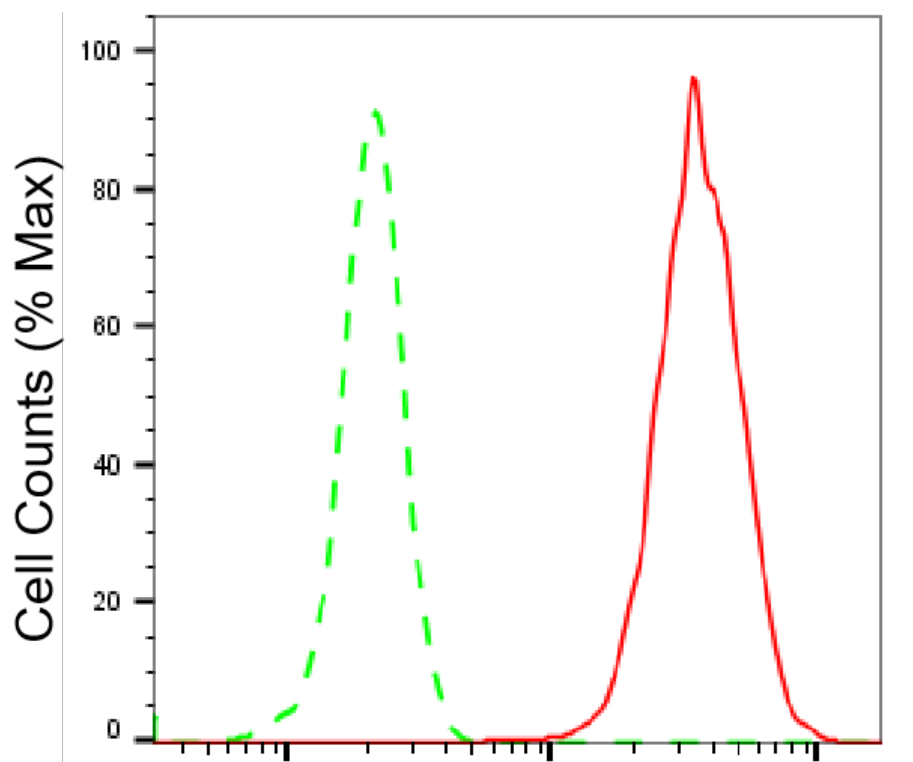
WWW.GENUINBIOTECH.COM

KD-Validated Anti-SDHA Recombinant Rabbit Monoclonal Antibody

PAGE 2

Note: This product is for research use only.

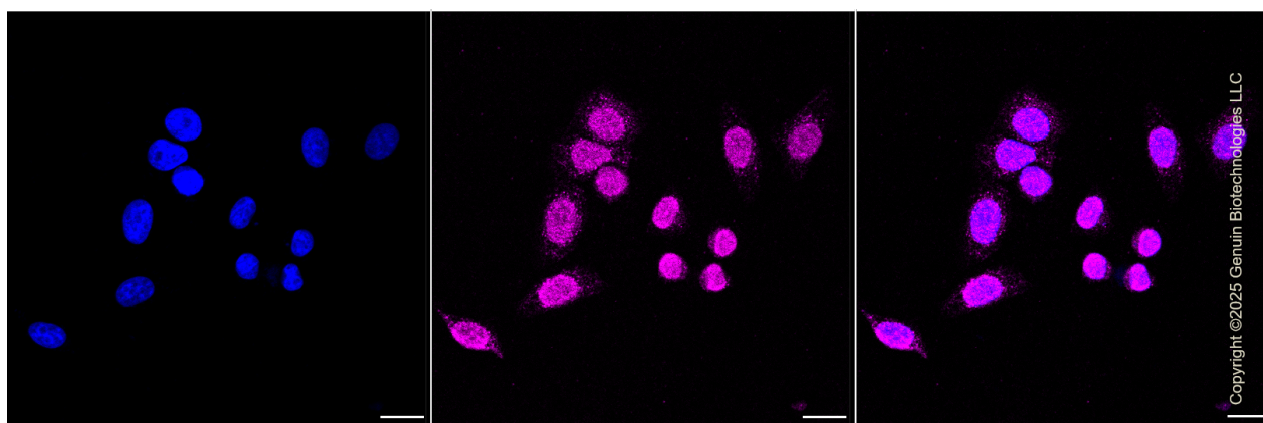
Validation Data



Copyright ©2025 Genuin Biotechnologies LLC

SDHA-Alexa Fluor® 647

Flow cytometric analysis of SDHA expression in HepG2 cells using SDHA antibody (Cat#61306, 1:2,000). Green, isotype control; red, SDHA.



Copyright ©2025 Genuin Biotechnologies LLC

Immunocytochemical staining of HepG2 cells with anti-SDHA antibody (Cat#61306, 1:1,000). Nuclei were stained blue with DAPI; SDHA was stained magenta with Alexa Fluor® 647. Images were taken using Leica stellaris 5. Protein abundance based on laser Intensity and smart gain: Medium. Scale bar, 20 µm.

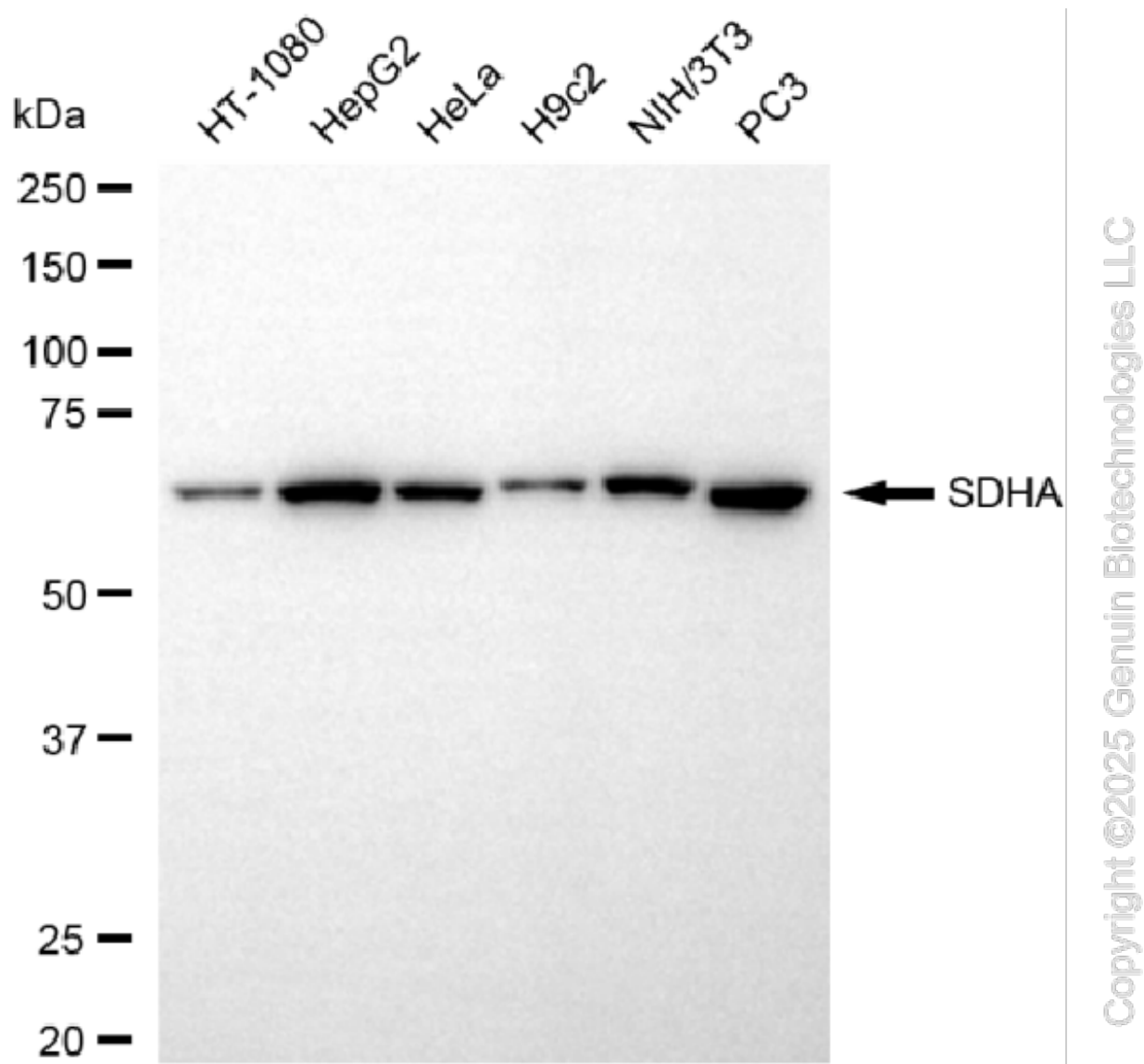
SUPPORT

SUPPORT@GENUINBIOTECH.COM
TEL: +1-540-855-7041

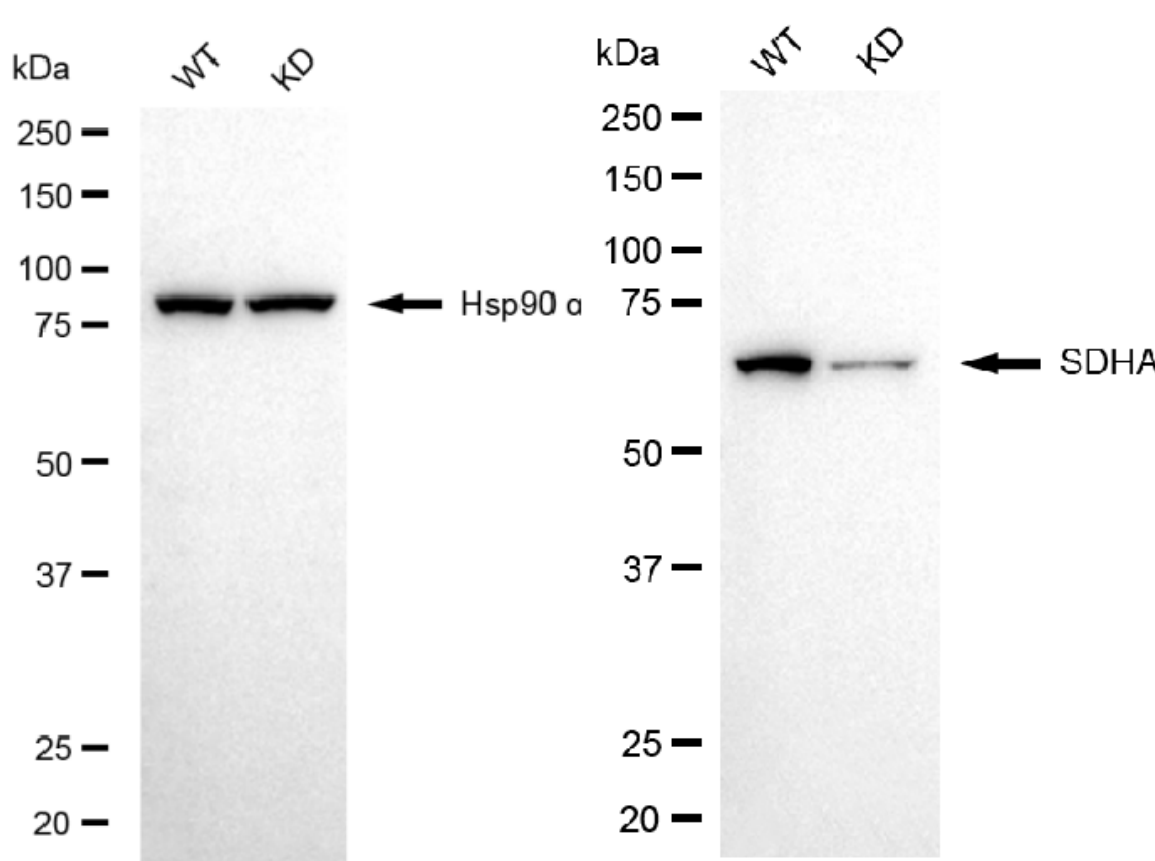
ORDERS

SALES@GENUINBIOTECH.COM
FAX: +1-540-855-7041

WWW.GENUINBIOTECH.COM



Western blotting analysis using anti-SDHA antibody (Cat#61306). Total cell lysates (30 µg) from various cell lines were loaded and separated by SDS-PAGE. The blot was incubated with anti-SDHA antibody (Cat#61306, 1:5,000) and HRP-conjugated goat anti-rabbit secondary antibody (Cat#201, 1:20,000) respectively. Image was developed using NaQ™ ECL Substrate Kit (Cat#716).



Copyright ©2025 Genuin Biotechnologies LLC

Western blotting analysis using anti-SDHA antibody (Cat#61306). SDHA expression in wild-type (WT) and SDHA knockdown (KD) 293T cells with 20 µg of total cell lysates. Hsp90 α serves as a loading control. The blot was incubated with anti-SDHA antibody (Cat#61306, 1:5,000) and HRP-conjugated goat anti-rabbit secondary antibody (Cat#201, 1:20,000) respectively. Image was developed using NaQ™ ECL Substrate Kit (Cat#716).