

KD-Validated Anti-COPS8 Recombinant Rabbit Monoclonal Antibody



Catalog #: 61308

Aliases

COPS8; COP9 Signalosome Subunit 8; CSN8; SGN8; COP9; JAB1-Containing Signalosome Subunit 8; COP9 Signalosome Complex Subunit 8; Signalosome Subunit 8; COP9 Homolog; MGC1297; COP9 Constitutive Photomorphogenic Homolog Subunit 8 (Arabidopsis); COP9 Constitutive Photomorphogenic Homolog Subunit 8; HCOP9

Background

Gene Name: COPS8

NCBI Gene Entry: [10920](#)

UniProt Entry: [Q99627](#)

Application Information

Molecular Weight: Predicted, 23 kDa; observed, 20 kDa

Clonality: Rabbit monoclonal antibody

Clone ID: 25GB2190

Species Reactivity: Human, mouse, rat

Applications Tested: Western blotting (WB), flow cytometry (FCM), immunocytochemistry (IC)

Immunogen

A synthesized peptide derived from human CSN8

Isotype

Rabbit IgG

Storage Buffer

Supplied in PBS (pH 7.4) containing 50% glycerol, and 0.02% sodium azide.

Storage

Store at -20 °C for one year.

Recommended Dilutions

Western blotting (WB): 1:1,000-1:5,000

Flow Cytometry (FCM): 1:2,000

Immunocytochemistry (IC): 1:100-1:1,000

SUPPORT

SUPPORT@GENUINBIOTECH.COM
TEL: +1-540-855-7041

ORDERS

SALES@GENUINBIOTECH.COM
FAX: +1-540-855-7041

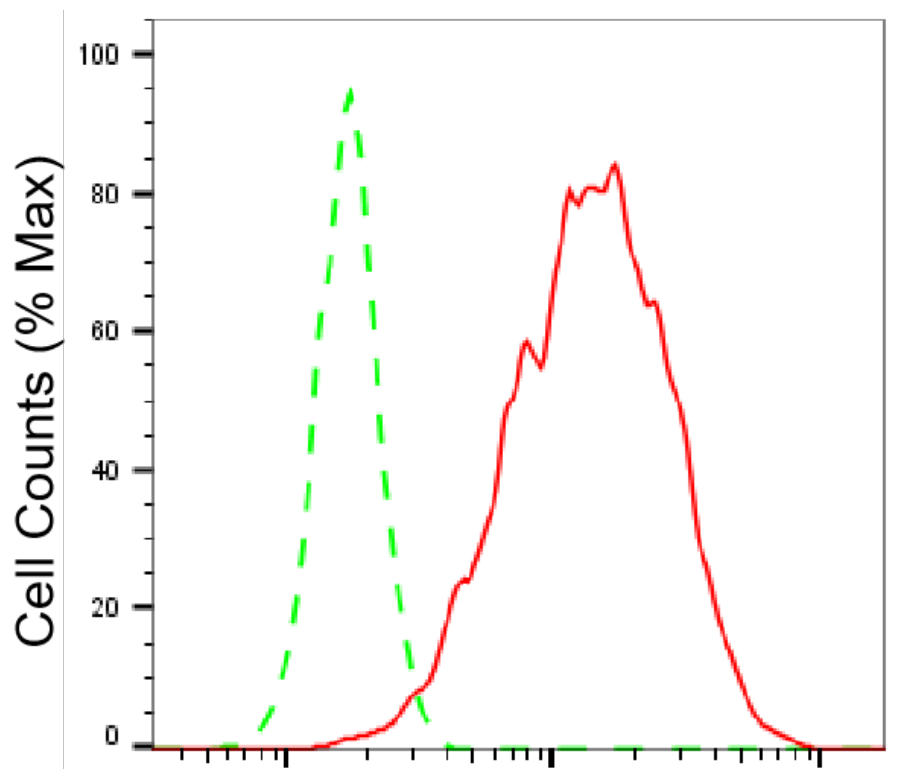
WWW.GENUINBIOTECH.COM

KD-Validated Anti-COPS8 Recombinant Rabbit Monoclonal Antibody

PAGE 2

Note: This product is for research use only.

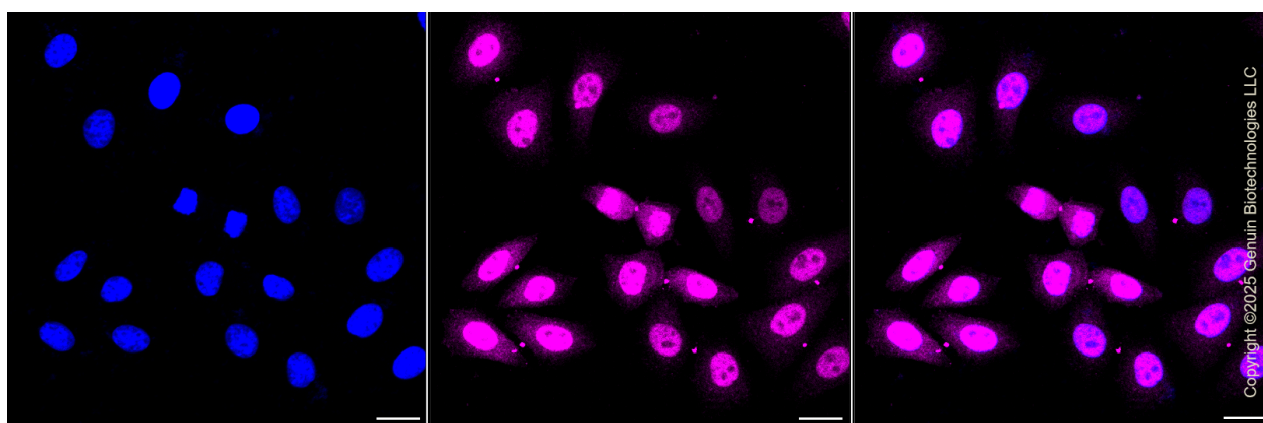
Validation Data



Copyright ©2025 Genuin Biotechnologies LLC

COPS8-Alexa Fluor® 647

Flow cytometric analysis of COPS8 expression in HepG2 cells using COPS8 antibody (Cat#61308, 1:2,000). Green, isotype control; red, COPS8.



Copyright ©2025 Genuin Biotechnologies LLC

Immunocytochemical staining of HepG2 cells with anti-COPS8 antibody (Cat#61308, 1:1,000). Nuclei were stained blue with DAPI; COPS8 was stained magenta with Alexa Fluor® 647. Images were taken using Leica stellaris 5. Protein abundance based on laser Intensity and smart gain:

SUPPORT

SUPPORT@GENUINBIOTECH.COM
TEL: +1-540-855-7041

ORDERS

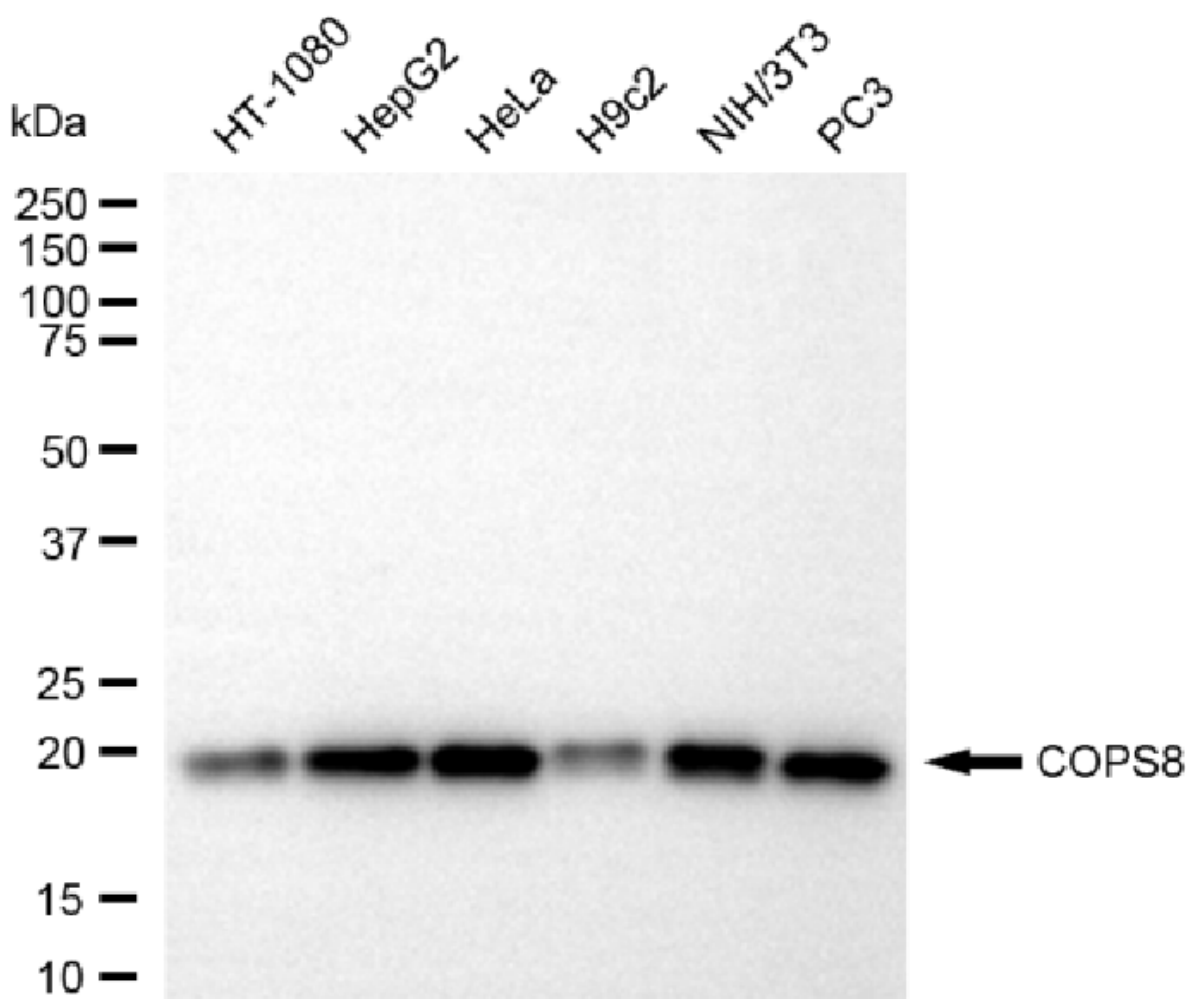
SALES@GENUINBIOTECH.COM
FAX: +1-540-855-7041

WWW.GENUINBIOTECH.COM

KD-Validated Anti-COPS8 Recombinant Rabbit Monoclonal Antibody

PAGE 3

High. Scale bar, 20 μ m.



Copyright ©2025 Genuin Biotechnologies LLC

Western blotting analysis using anti-COPS8 antibody (Cat#61308). Total cell lysates (30 μ g) from various cell lines were loaded and separated by SDS-PAGE. The blot was incubated with anti-COPS8 antibody (Cat#61308, 1:5,000) and HRP-conjugated goat anti-rabbit secondary antibody (Cat#201, 1:20,000) respectively. Image was developed using NaQ™ ECL Substrate Kit (Cat#716).

SUPPORT

SUPPORT@GENUINBIOTECH.COM
TEL: +1-540-855-7041

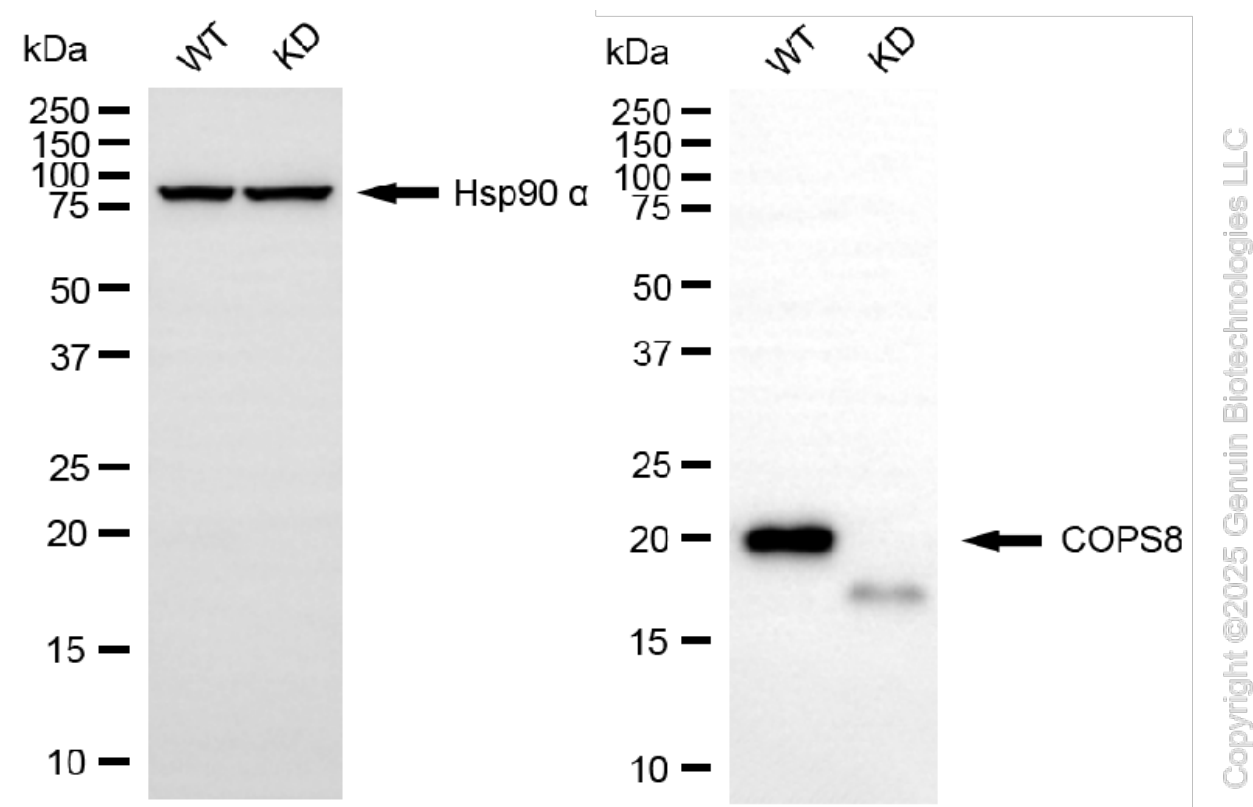
ORDERS

SALES@GENUINBIOTECH.COM
FAX: +1-540-855-7041

WWW.GENUINBIOTECH.COM

KD-Validated Anti-COPS8 Recombinant Rabbit Monoclonal Antibody

PAGE 4



Western blotting analysis using anti-COPS8 antibody (Cat#61308). COPS8 expression in wild-type (WT) and COPS8 knockdown (KD) 293T cells with 20 μ g of total cell lysates. Hsp90 α serves as a loading control. The blot was incubated with anti-COPS8 antibody (Cat#61308, 1:5,000) and HRP-conjugated goat anti-rabbit secondary antibody (Cat#201, 1:20,000) respectively. Image was developed using NaQ™ ECL Substrate Kit (Cat#716).

SUPPORT

SUPPORT@GENUINBIOTECH.COM
TEL: +1-540-855-7041

ORDERS

SALES@GENUINBIOTECH.COM
FAX: +1-540-855-7041

WWW.GENUINBIOTECH.COM