

KD-Validated Anti-SMARCE1 Recombinant Rabbit Monoclonal Antibody



Catalog #: 61309

Aliases

SMARCE1; SWI/SNF Related, Matrix Associated, Actin Dependent Regulator Of Chromatin, Subfamily E, Member 1; BAF57; SWI/SNF-Related Matrix-Associated Actin-Dependent Regulator Of Chromatin Subfamily E Member 1; BRG1-Associated Factor 57; SWI/SNF-Related Matrix-Associated Actin-Dependent Regulator Of Chromatin E1; Chromatin Remodeling Complex BRG1-Associated Factor 57; CSS5

Background

Gene Name: SMARCE1

NCBI Gene Entry: [6605](#)

UniProt Entry: [Q969G3](#)

Application Information

Molecular Weight: Predicted, 47 kDa., observed, 57 kDa

Clonality: Rabbit monoclonal antibody

Clone ID: 23GB2810

Species Reactivity: Human, mouse, rat

Applications Tested: Western blotting (WB), flow cytometry (FCM), immunocytochemistry (IC)

Immunogen

A synthesized peptide derived from human BAF57/SMARCE1

Isotype

Rabbit IgG

Storage Buffer

Supplied in PBS (pH 7.4) containing 50% glycerol, and 0.02% sodium azide.

Storage

Store at -20 °C for one year.

Recommended Dilutions

Western Blotting (WB): 1:1,000-1:5,000

Flow Cytometry (FCM): 1:2,000

Immunocytochemistry (IC): 1:100-1:1,000

SUPPORT

SUPPORT@GENUINBIOTECH.COM
TEL: +1-540-855-7041

ORDERS

SALES@GENUINBIOTECH.COM
FAX: +1-540-855-7041

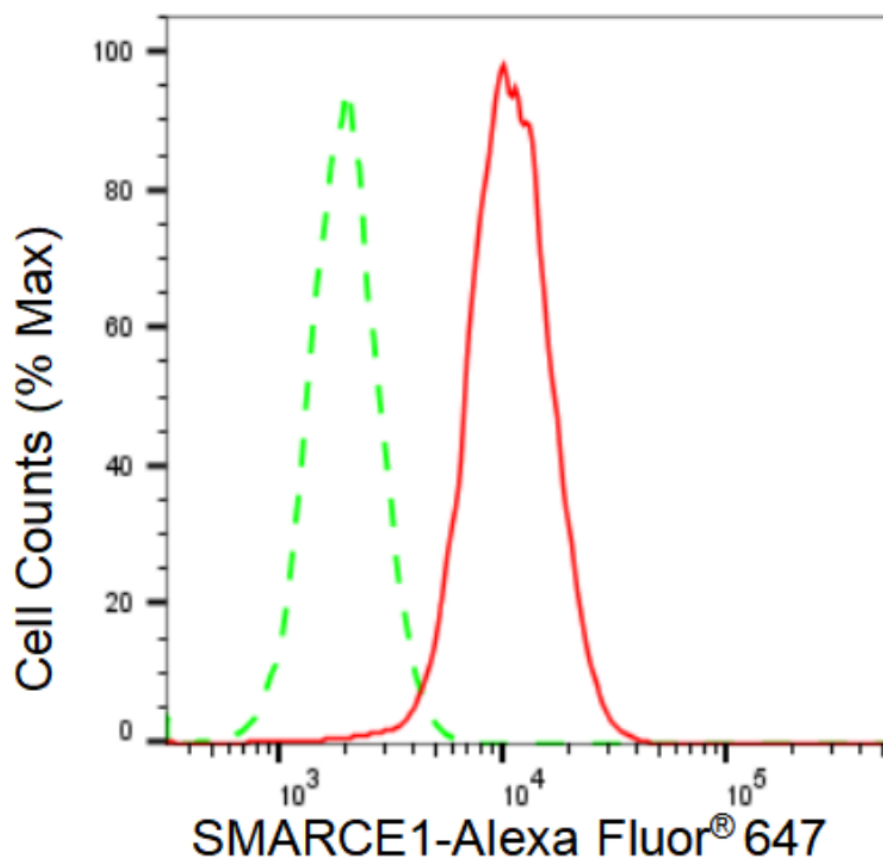
WWW.GENUINBIOTECH.COM

KD-Validated Anti-SMARCE1 Recombinant Rabbit Monoclonal Antibody

PAGE 2

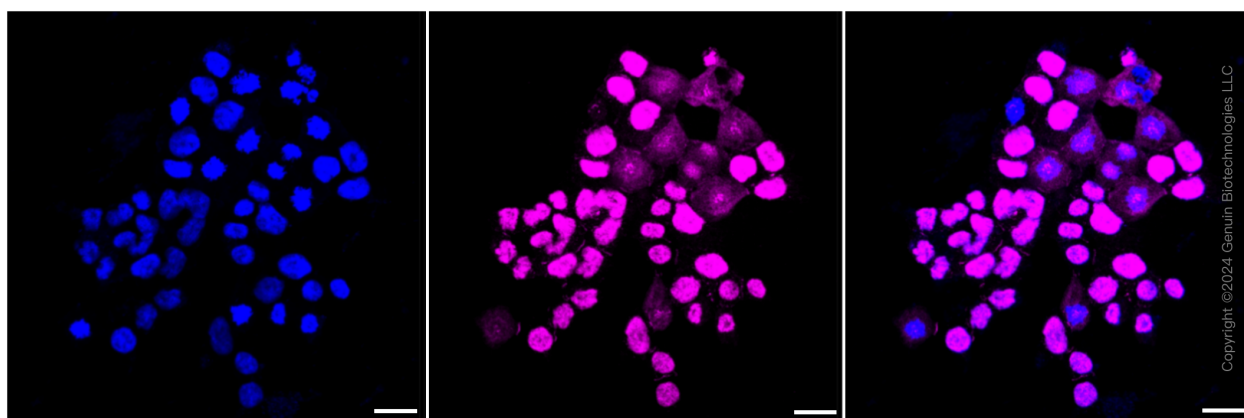
Note: This product is for research use only.

Validation Data



Copyright ©2024 Genuin Biotechnologies LLC

Flow cytometric analysis of SMARCE1 expression in HAP-1 cells using SMARCE1 antibody (Cat#61309, 1:2,000). Green, isotype control; red, SMARCE1.



Copyright ©2024 Genuin Biotechnologies LLC

SUPPORT

SUPPORT@GENUINBIOTECH.COM
TEL: +1-540-855-7041

ORDERS

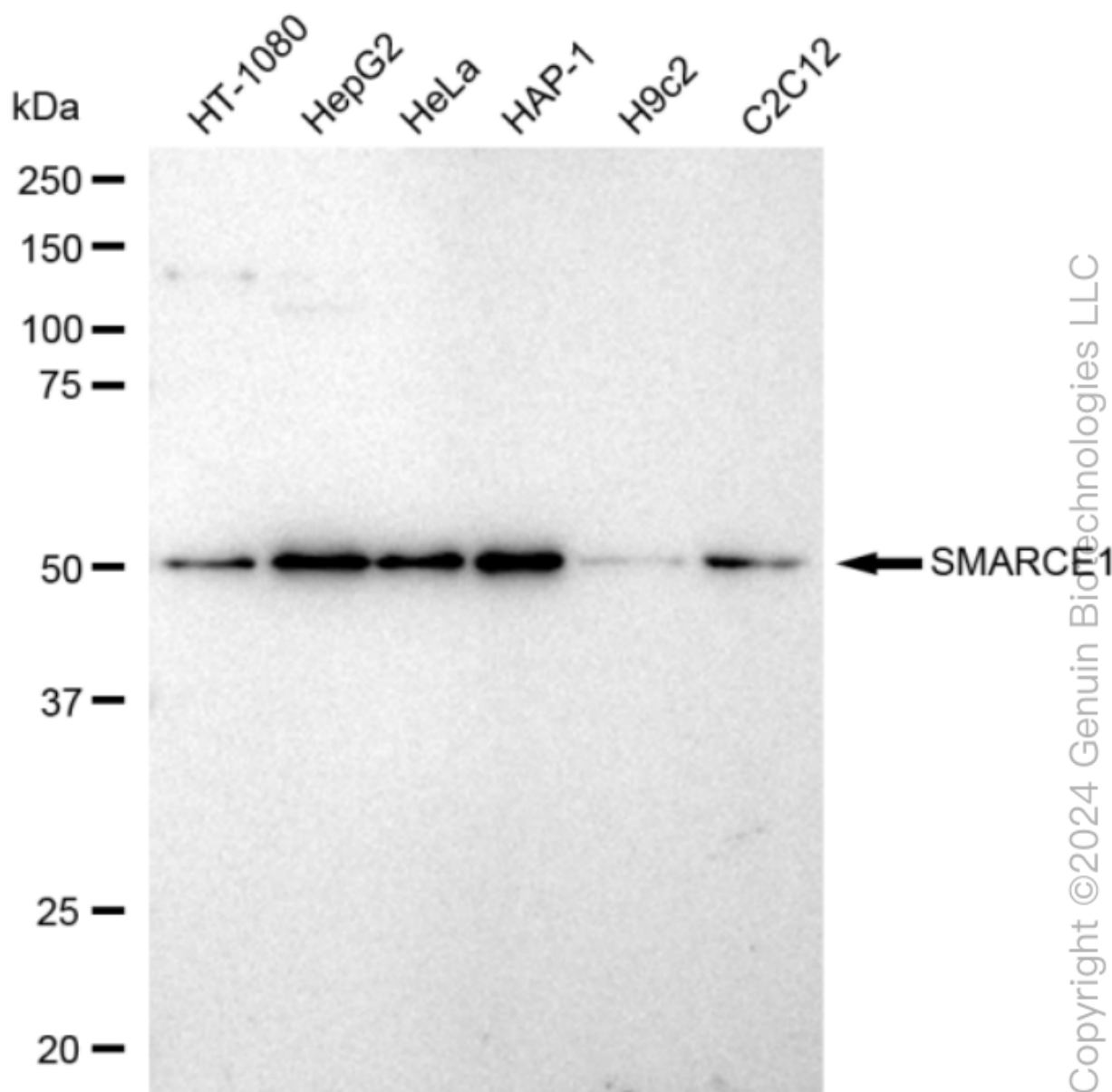
SALES@GENUINBIOTECH.COM
FAX: +1-540-855-7041

WWW.GENUINBIOTECH.COM

KD-Validated Anti-SMARCE1 Recombinant Rabbit Monoclonal Antibody

PAGE 3

gain: High. Scale bar: 20 μ m.



Western blotting analysis using anti-SMARCE1 antibody (Cat#61309). Total cell lysates (30 μ g) from various cell lines were loaded and separated by SDS-PAGE. The blot was incubated with anti-SMARCE1 antibody (Cat#61309, 1:5,000) and HRP-conjugated goat anti-rabbit secondary antibody (Cat#201, 1:20,000) respectively. Image was developed using FeQ™ ECL Substrate Kit (Cat#226).

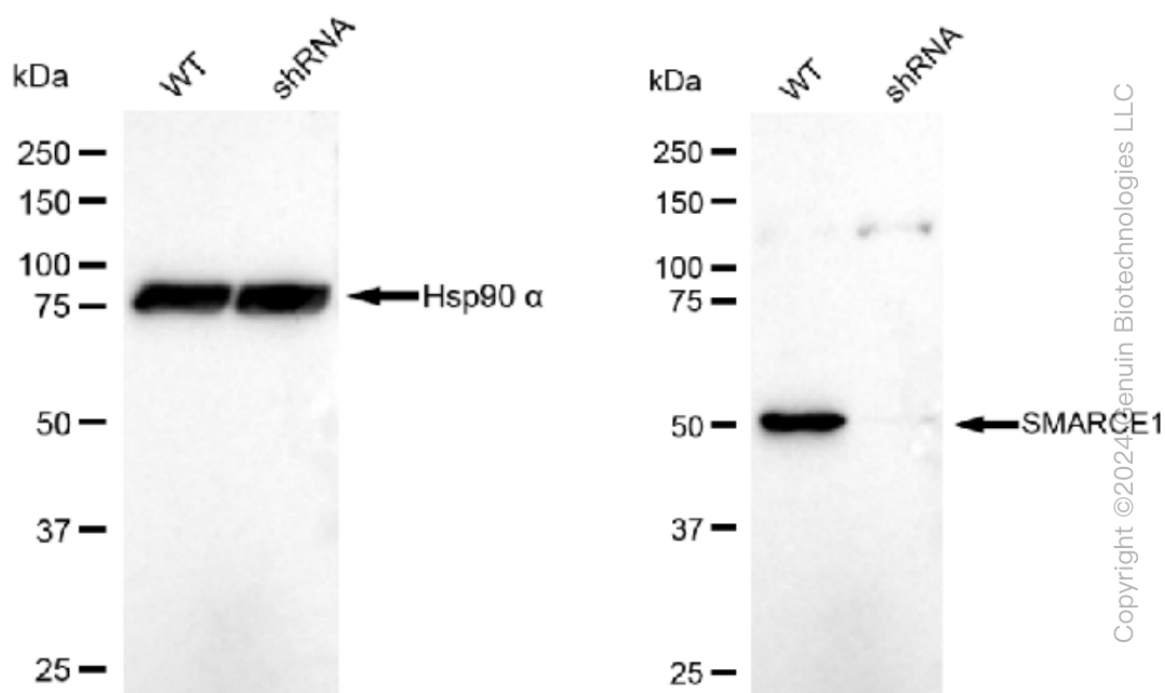
SUPPORT

SUPPORT@GENUINBIOTECH.COM
TEL: +1-540-855-7041

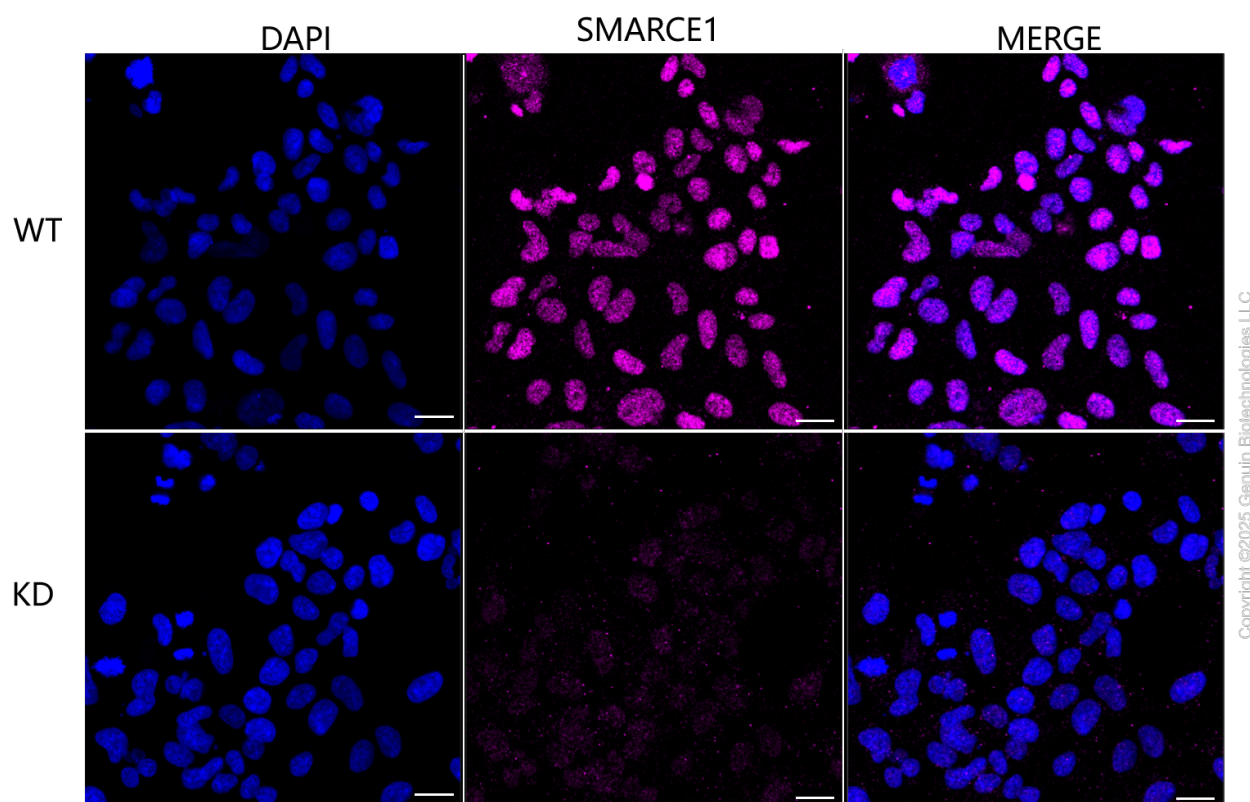
ORDERS

SALES@GENUINBIOTECH.COM
FAX: +1-540-855-7041

WWW.GENUINBIOTECH.COM



Western blotting analysis using anti-SMARCE1 antibody (Cat#61309). SMARCE1 expression in wild type (WT) and SMARCE1 shRNA knockdown (KD) HeLa cells with 30 μ g of total cell lysates. Hsp90 α serves as a loading control. The blot was incubated with anti-SMARCE1 antibody (Cat#61309, 1:5,000) and HRP-conjugated goat anti-rabbit secondary antibody (Cat#201, 1:20,000) respectively. Image was developed using FeQ™ ECL Substrate Kit (Cat#226).



Immunocytochemical staining of HeLa cells using anti-SMARCE1 antibody (Cat#61309, 1:1,000), Top panel: wild-type (WT); Bottom panel: SMARCE1 shRNA knockdown (KD). Nuclei were stained blue with DAPI; SMARCE1 was stained magenta with Alexa Fluor® 647. Scale bar, 20 μ m.