

KD-Validated Anti-p150 CAF1 Rabbit Monoclonal Antibody



Catalog #: 61311

Aliases

CAF1P150; CAF1B; CAF-1; CAF1; P150; Chromatin Assembly Factor I P150 Subunit; Chromatin Assembly Factor I (150 KDa); CAF-I 150 KDa Subunit; CAF-1 Subunit A; CAF-I P150; MGC71229; Hp150; Chromatin Assembly Factor 1, Subunit A (P150); CTB-50L17.7; CAF

Background

Gene Name: CHAF1A

NCBI Gene Entry: [10036](#)

UniProt Entry: [Q13111](#)

Application Information

Molecular Weight: Predicted, 107 kDa, observed, 150 kDa

Clonality: Rabbit monoclonal antibody

Clone ID: 23GB1060

Species Reactivity: Human

Applications Tested: Western blotting (WB), flow cytometry (FCM), immunocytochemistry (IC)

Immunogen

A synthesized peptide derived from human p150 CAF1

Isotype

Rabbit IgG

Storage Buffer

Supplied in PBS (pH 7.4) containing 50% glycerol, and 0.02% sodium azide.

Storage

Store at -20 °C for one year.

Recommended Dilutions

Western Blotting (WB): 1:1,000-1:5,000

Flow Cytometry (FCM): 1:2,000

Immunocytochemistry (IC): 1:100-1:1,000

Note: This product is for research use only.

SUPPORT

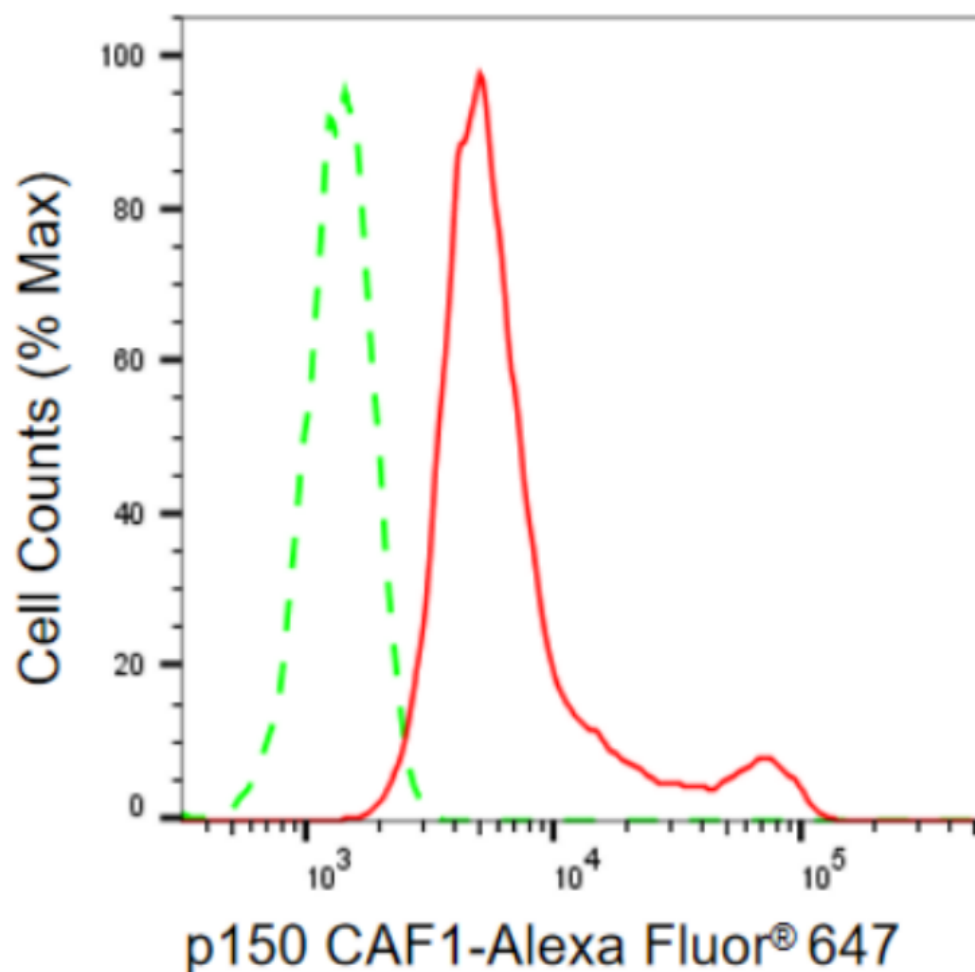
SUPPORT@GENUINBIOTECH.COM
TEL: +1-540-855-7041

ORDERS

SALES@GENUINBIOTECH.COM
FAX: +1-540-855-7041

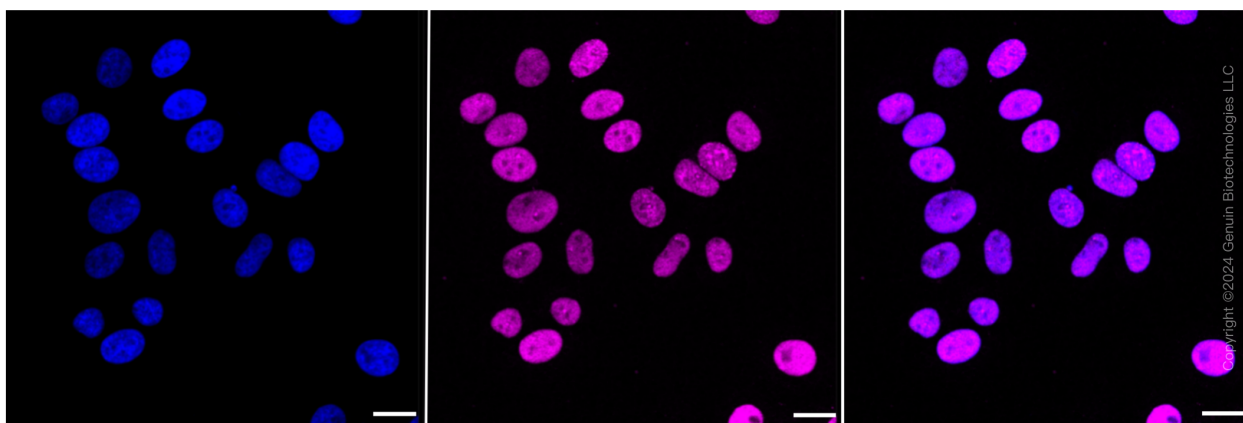
WWW.GENUINBIOTECH.COM

Validation Data



Copyright ©2024 Genuin Biotechnologies LLC

Flow cytometric analysis of p150 CAF1 expression in HepG2 cells using p150 CAF1 antibody (Cat#61311, 1:2,000). Green, isotype control; red, p150 CAF1.



Immunocytochemical staining of HepG2 cells with p150 CAF1 antibody (Cat#61311, 1:1,000). Nuclei were stained blue with DAPI; p150 CAF1 was stained magenta with Alexa Fluor® 647.

SUPPORT

SUPPORT@GENUINBIOTECH.COM
TEL: +1-540-855-7041

ORDERS

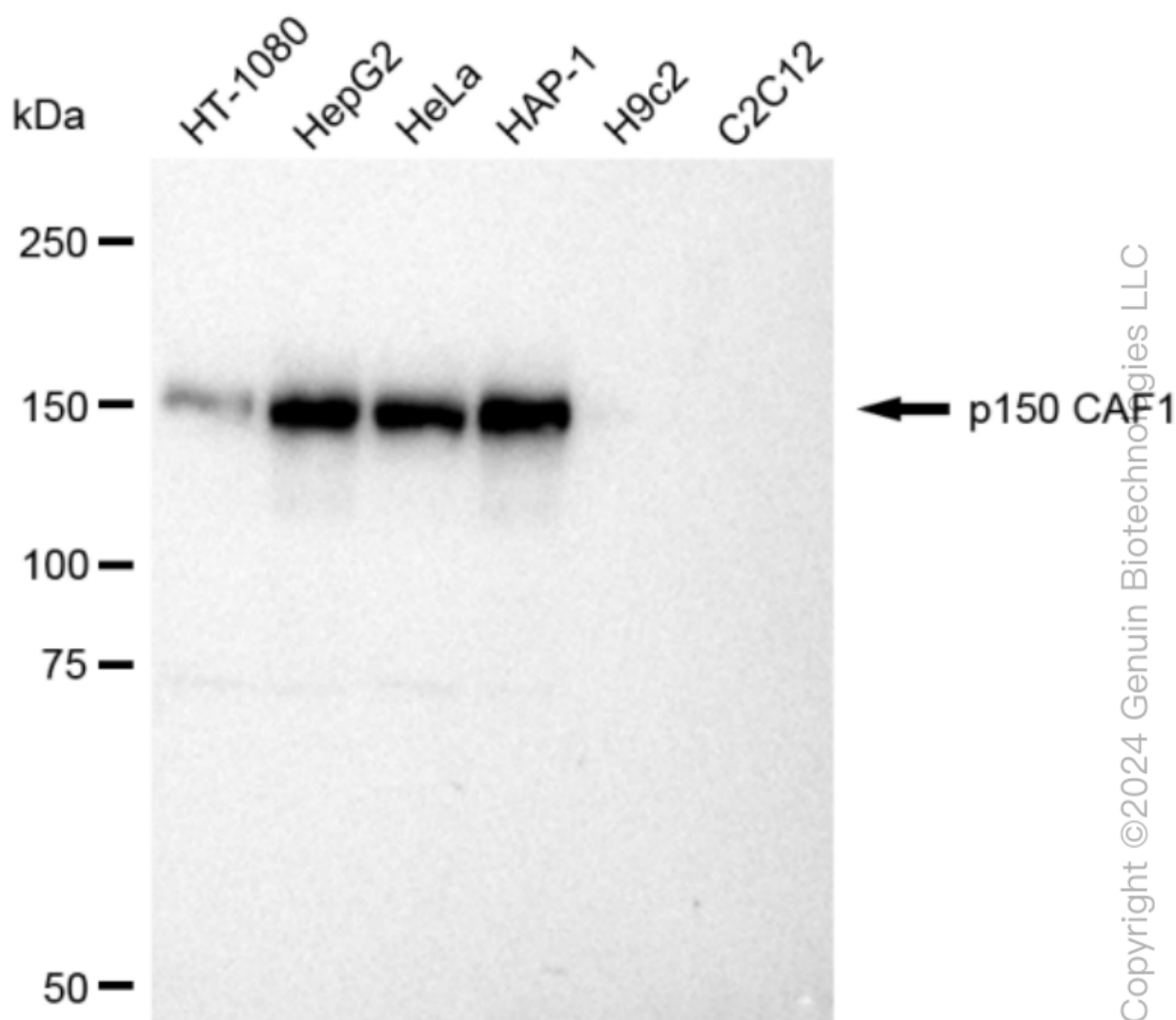
SALES@GENUINBIOTECH.COM
FAX: +1-540-855-7041

WWW.GENUINBIOTECH.COM

KD-Validated Anti-p150 CAF1 Rabbit Monoclonal Antibody

PAGE 3

Images were taken using Leica stellaris 5. Protein abundance based on laser Intensity and smart gain: High. Scale bar: 20 μ m.



Western blotting analysis using anti-p150 CAF1 antibody (Cat#61311). Total cell lysates (30 μ g) from various cell lines were loaded and separated by SDS-PAGE. The blot was incubated with anti-p150 CAF1 antibody (Cat#61311, 1:5,000) and HRP-conjugated goat anti-rabbit secondary antibody (Cat#201, 1:50,000) respectively. Image was developed using FeQ™ ECL Substrate Kit (Cat#226).

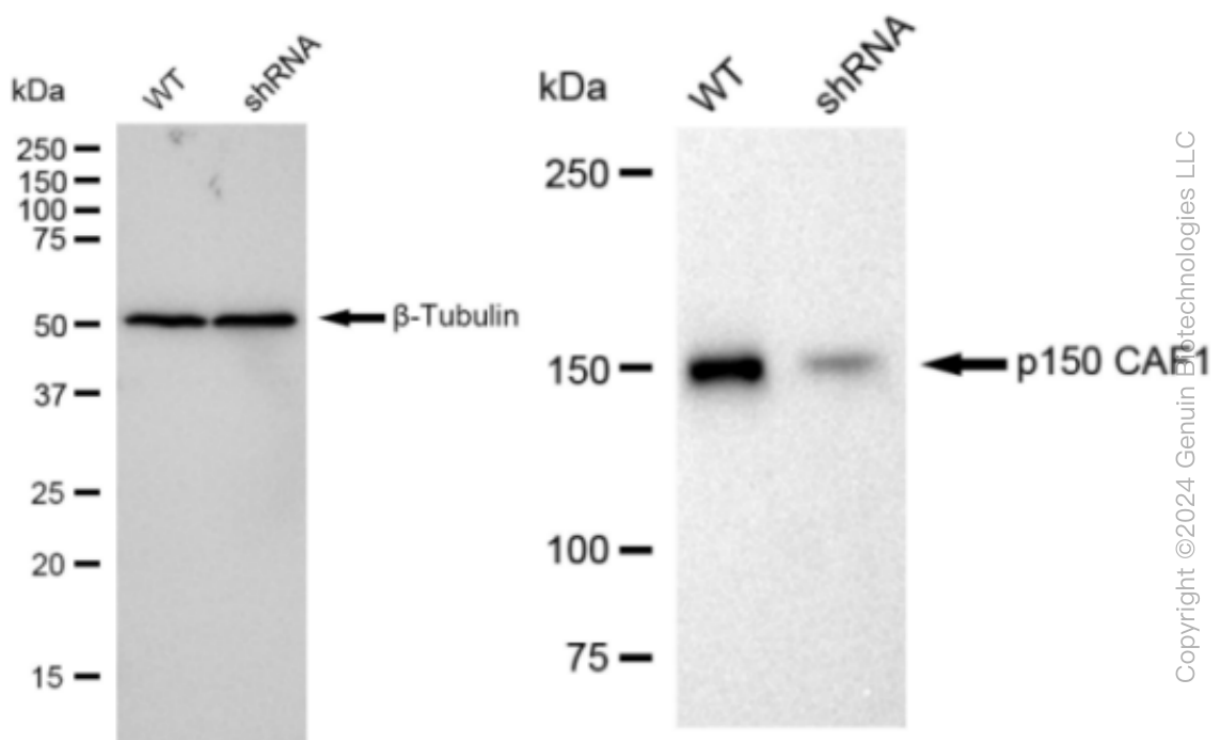
SUPPORT

SUPPORT@GENUINBIOTECH.COM
TEL: +1-540-855-7041

ORDERS

SALES@GENUINBIOTECH.COM
FAX: +1-540-855-7041

WWW.GENUINBIOTECH.COM



Western blotting analysis using anti-p150 CAF1 antibody (Cat#61311). p150 CAF1 expression in wild type (WT) and p150 CAF1 shRNA knockdown (KD) HeLa cells with 30 μ g of total cell lysates. β -Tubulin serves as a loading control. The blot was incubated with anti-p150 CAF1 antibody (Cat#61311, 1:5,000) and HRP-conjugated goat anti-rabbit secondary antibody (Cat#201, 1:20,000) respectively. Image was developed using FeQ™ ECL Substrate Kit (Cat#226).