

KD-Validated Anti-Collapsin response mediator protein 1 Recombinant Rabbit Monoclonal



Catalog #: 61315

Aliases

CRMP1; Collapsin Response Mediator Protein 1; DPYSL1; DRP-1; Dihydropyrimidinase-Related Protein 1; Inactive Dihydropyrimidinase; Unc-33-Like Phosphoprotein 3; CRMP-1; ULIP-3; Dihydropyrimidinase-Like 1; ULIP3; DRP1

Background

Gene Name: CRMP1

NCBI Gene Entry: [1400](#)

UniProt Entry: [Q14194](#)

Application Information

Molecular Weight: Predicted, 62 kDa; observed, 62 kDa

Clonality: Rabbit monoclonal antibody

Clone ID: 25GB2215

Species Reactivity: Human

Applications Tested: Western blotting (WB), flow cytometry (FCM), immunocytochemistry (IC)

Immunogen

A synthesized peptide derived from human CRMP1

Isotype

Rabbit IgG

Storage Buffer

Supplied in PBS (pH 7.4) containing 50% glycerol, and 0.02% sodium azide.

Storage

Store at -20 °C for one year.

Recommended Dilutions

Western Blotting (WB): 1:1,000-1:5,000

Flow Cytometry (FCM): 1:2,000

Immunocytochemistry (IC): 1:100-1:1,000

Note: This product is for research use only.

SUPPORT

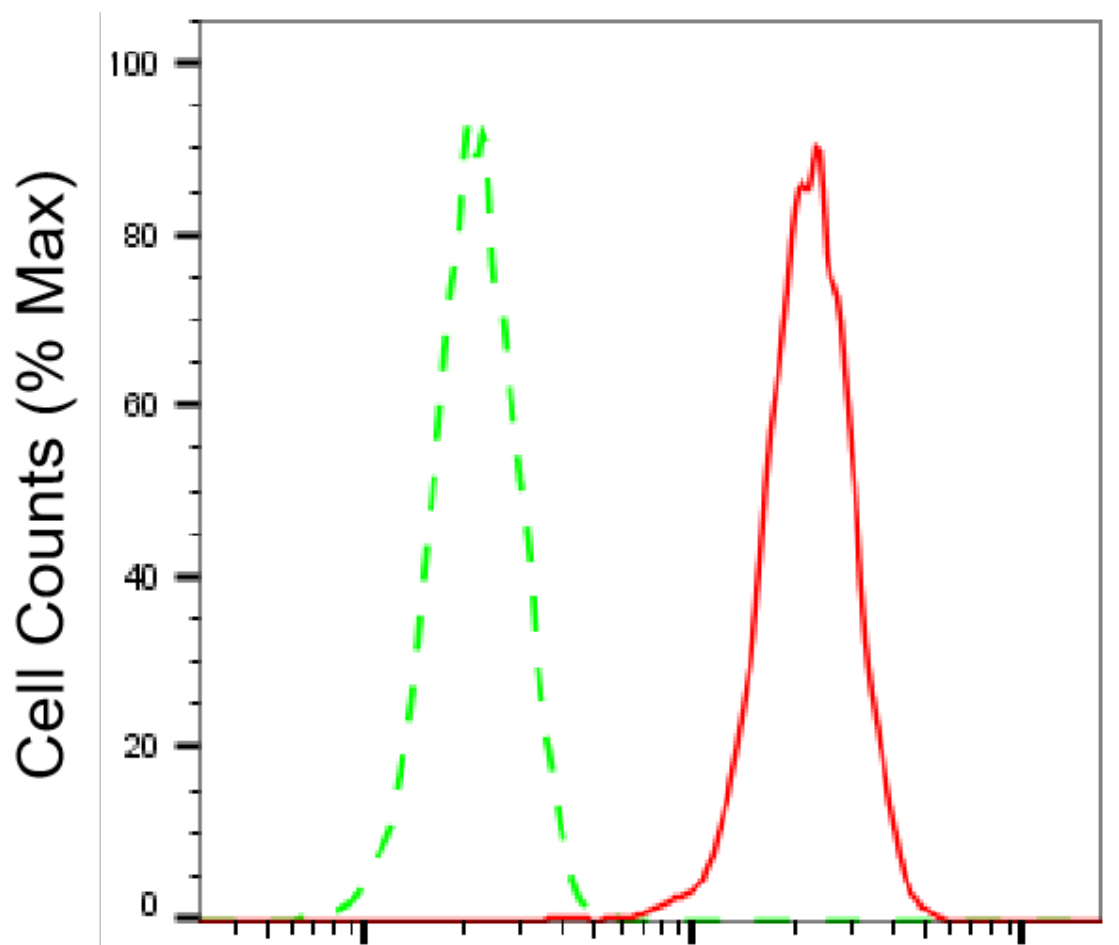
SUPPORT@GENUINBIOTECH.COM
TEL: +1-540-855-7041

ORDERS

SALES@GENUINBIOTECH.COM
FAX: +1-540-855-7041

WWW.GENUINBIOTECH.COM

Validation Data



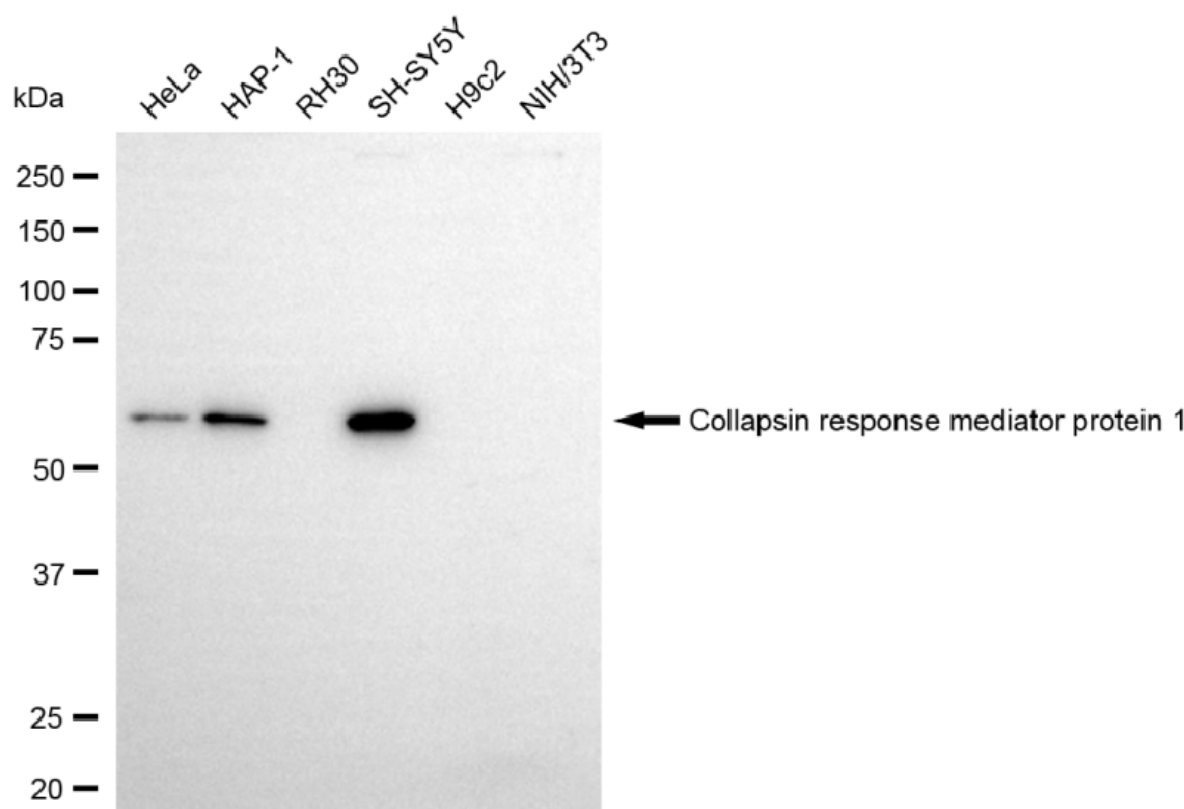
Copyright ©2025 Genuin Biotechnologies LLC

**Collapsin response mediator protein 1-
Alexa Fluor® 647**

Flow cytometric analysis of Collapsin response mediator protein 1 expression in HAP-1 cells using Collapsin response mediator protein 1 antibody (Cat#61315, 1:2,000). Green, isotype control; red, Collapsin response mediator protein 1.



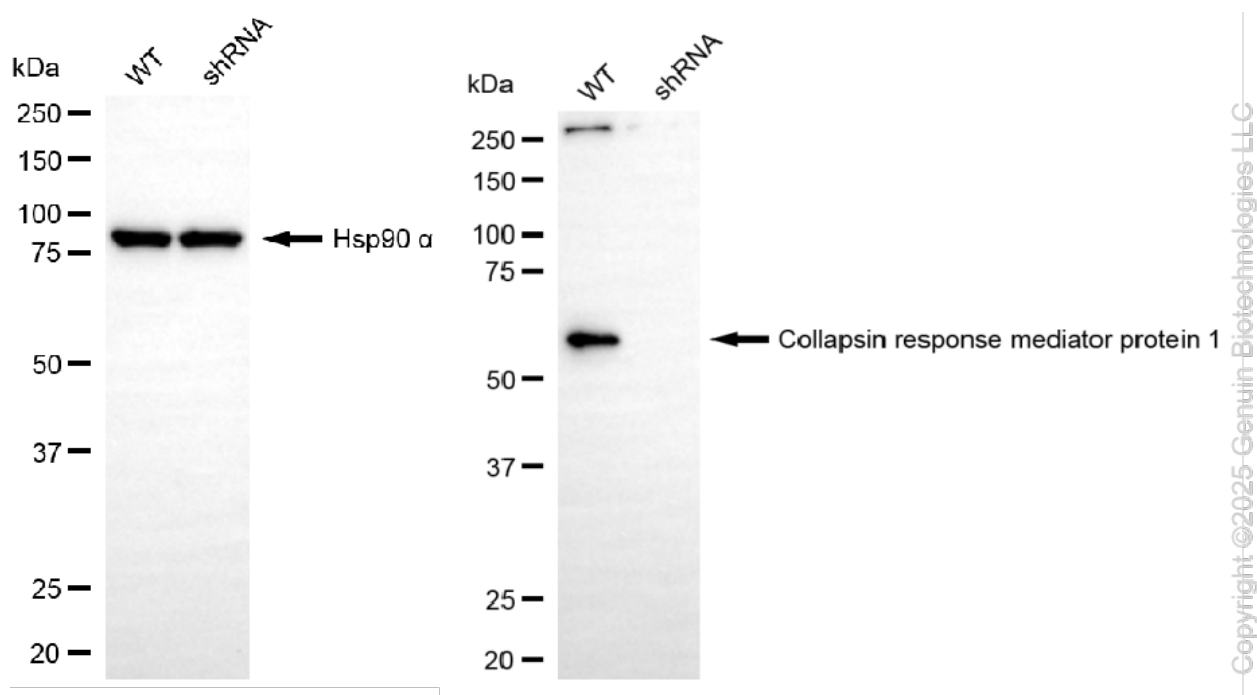
Immunocytochemical staining of HAP-1 cells with anti-Collapsin response mediator protein 1 antibody (Cat#61315, 1:1,000). Nuclei were stained blue with DAPI; Collapsin response mediator protein 1 was stained magenta with Alexa Fluor® 647. Images were taken using Leica stellaris 5. Protein abundance based on laser Intensity and smart gain: Medium. Scale bar, 20 µm.



Western blotting analysis using anti-collapsin response mediator protein 1 antibody (Cat#61315). Total cell lysates (30 µg) from various cell lines were loaded and separated by SDS-PAGE. The blot was incubated with anti-collapsin response mediator protein 1 antibody (Cat#61315, 1:5,000) and HRP-conjugated goat anti-rabbit secondary antibody (Cat#201, 1:20,000) respectively. Image was developed using NaQ™ ECL Substrate Kit (Cat#716).

KD-Validated Anti-Collapsin response mediator protein 1 Recombinant Rabbit Monoclonal

PAGE 4



Western blotting analysis using anti-collapsin response mediator protein 1 antibody (Cat#61315). Collapsin response mediator protein 1 expression in wild-type (WT) and collapsin response mediator protein 1 (CRMP1) shRNA knockdown (KD) HSHC cells with 20 µg of total cell lysates. Hsp90 α serves as a loading control. The blot was incubated with anti-collapsin response mediator protein 1 antibody (Cat#61315, 1:5,000) and HRP-conjugated goat anti-rabbit secondary antibody (Cat#201, 1:20,000) respectively. Image was developed using NaQ™ ECL Substrate Kit (Cat#716).

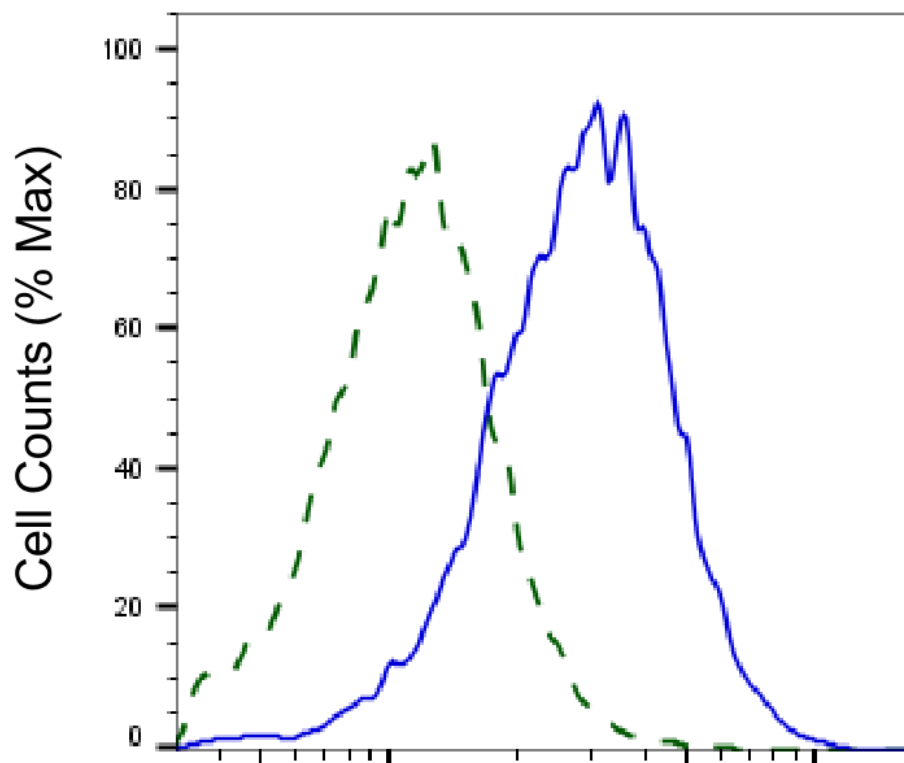
SUPPORT

SUPPORT@GENUINBIOTECH.COM
TEL: +1-540-855-7041

ORDERS

SALES@GENUINBIOTECH.COM
FAX: +1-540-855-7041

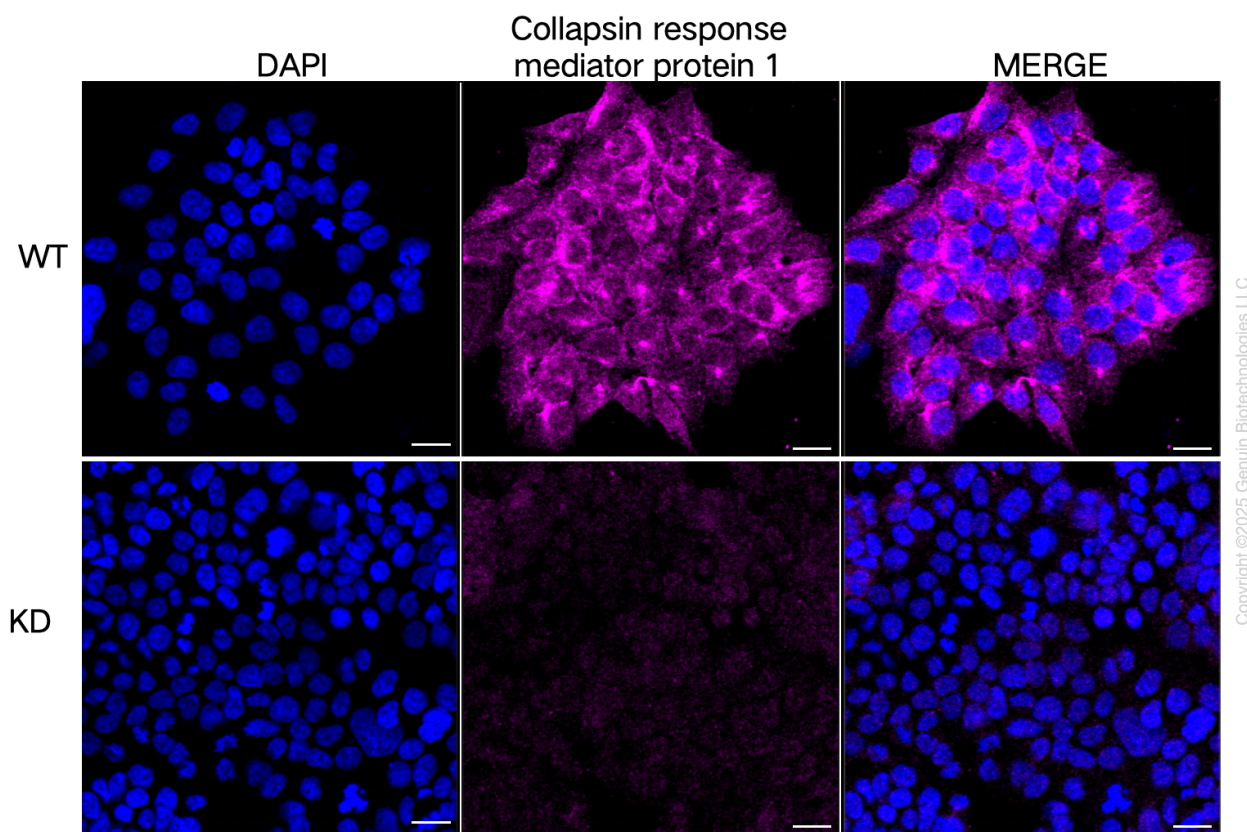
WWW.GENUINBIOTECH.COM



Copyright ©2025 Genuin Biotechnologies LLC

Collapsin response mediator protein 1-Alexa Fluor® 647

Validation of Collapsin response mediator protein 1 knockdown using flow cytometry. Wild-type(WT, Blue) and knockdown(KD, Green) HSHC cells were stained with anti-Collapsin response mediator protein 1 antibody (Cat#61315, 1:2,000) and analyzed using BD flow cytometer.



Immunocytochemical staining of HSHC cells using anti-Collapsin response mediator protein 1 antibody (Cat#61315, 1:1,000), Top panel: wild-type (WT); Bottom panel: Collapsin response mediator protein 1 shRNA knockdown (KD). Nuclei were stained blue with DAPI; Collapsin response mediator protein 1 was stained magenta with Alexa Fluor® 647. Scale bar, 20 μ m.