

# KD-Validated Anti-CHD1L Recombinant Rabbit Monoclonal Antibody



**Catalog #: 61316**

## Aliases

CHD1L; Chromodomain Helicase DNA Binding Protein 1 Like; ALC1; Chromodomain-Helicase-DNA-Binding Protein 1-Like; Amplified In Liver Cancer Protein 1; Amplified In Liver Cancer 1; EC 3.6.4.-; EC 3.6.1; CHDL

## Background

Gene Name: CHD1L

NCBI Gene Entry: [9557](#)

UniProt Entry: [Q86WJ1](#)

## Application Information

Molecular Weight: Predicted, 101 kDa; observed, 110 kDa

Clonality: Rabbit monoclonal antibody

Clone ID: 25GB2220

Species Reactivity: Human

Applications Tested: Western blotting (WB), flow cytometry (FCM), immunocytochemistry (IC)

## Immunogen

A synthesized peptide derived from human CHD1L

## Isotype

Rabbit IgG

## Storage Buffer

Supplied in PBS (pH 7.4) containing 50% glycerol, and 0.02% sodium azide.

## Storage

Store at -20 °C for one year.

## Recommended Dilutions

Western Blotting (WB): 1:1,000-1:5,000

Flow Cytometry (FCM): 1:2,000

Immunocytochemistry (IC): 1:100-1:1,000

**Note:** This product is for research use only.

---

### SUPPORT

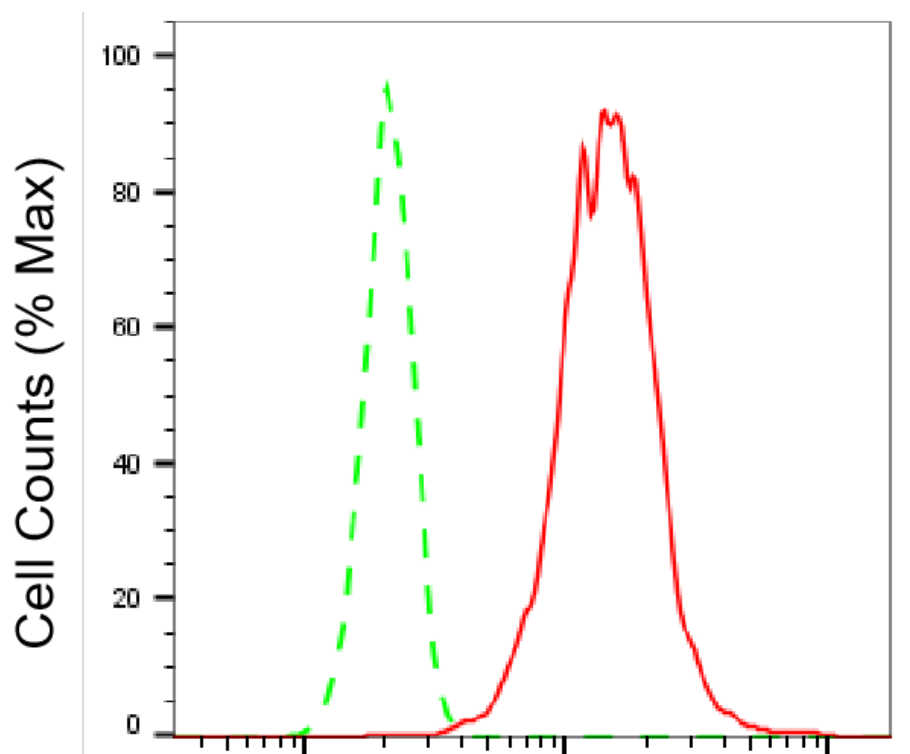
SUPPORT@GENUINBIOTECH.COM  
TEL: +1-540-855-7041

### ORDERS

SALES@GENUINBIOTECH.COM  
FAX: +1-540-855-7041

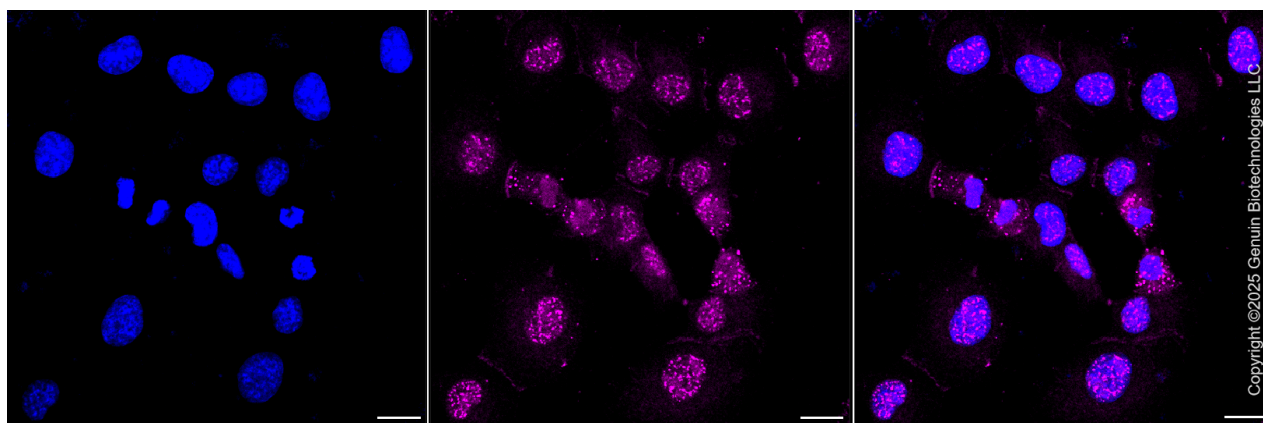
[WWW.GENUINBIOTECH.COM](http://WWW.GENUINBIOTECH.COM)

**Validation Data**



**CHD1L-Alexa Fluor® 647**

Flow cytometric analysis of CHD1L expression in HT-1080 cells using CHD1L antibody (Cat#61316, 1:2,000). Green, isotype control; red, CHD1L.



Immunocytochemical staining of HT-1080 cells with anti-CHD1L antibody (Cat#61316, 1:1,000). Nuclei were stained blue with DAPI; CHD1L was stained magenta with Alexa Fluor® 647. Images were taken using Leica stellaris 5. Protein abundance based on laser Intensity and smart gain: Medium. Scale bar, 20  $\mu$ m.

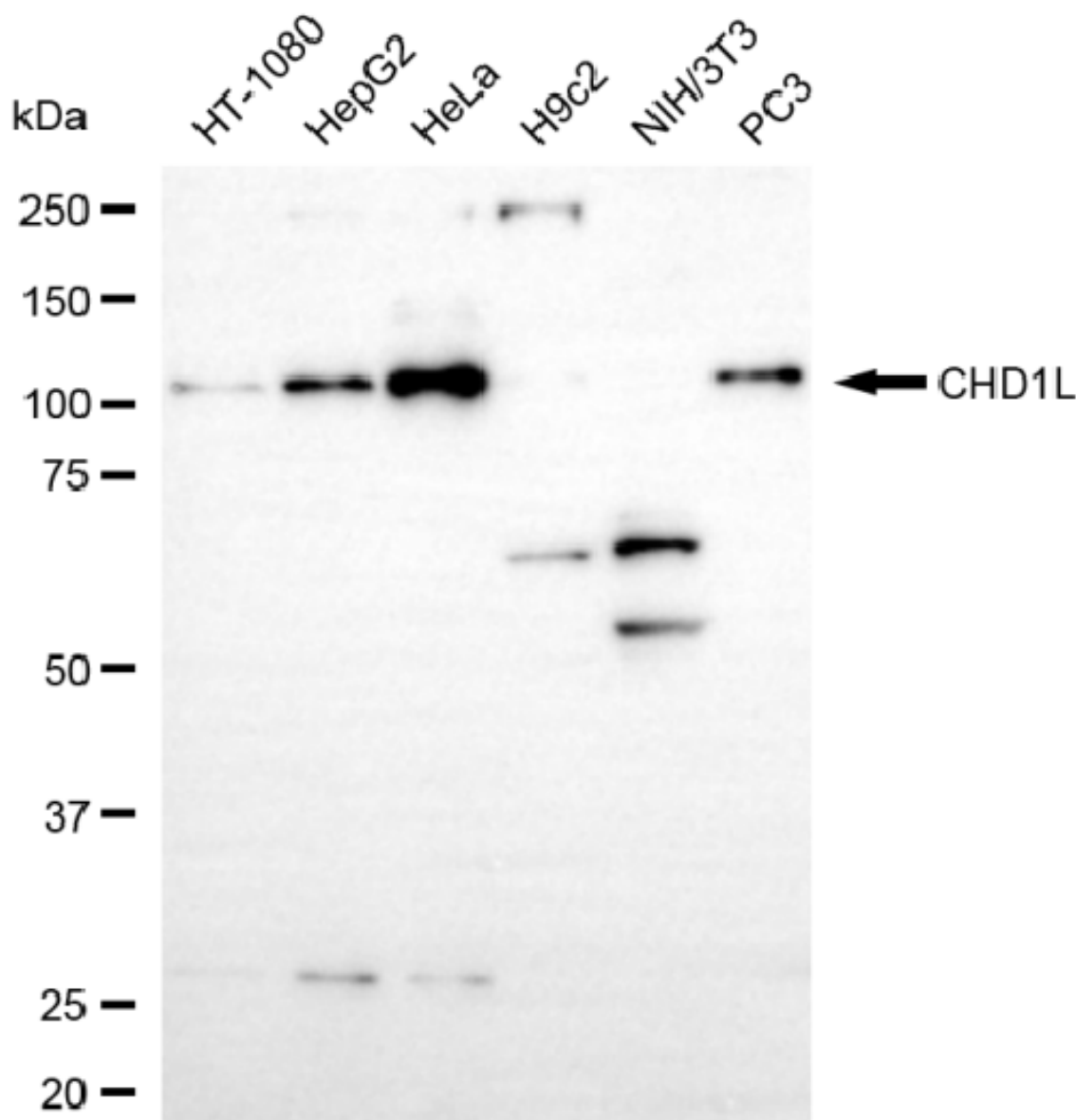
**SUPPORT**

SUPPORT@GENUINBIOTECH.COM  
TEL: +1-540-855-7041

**ORDERS**

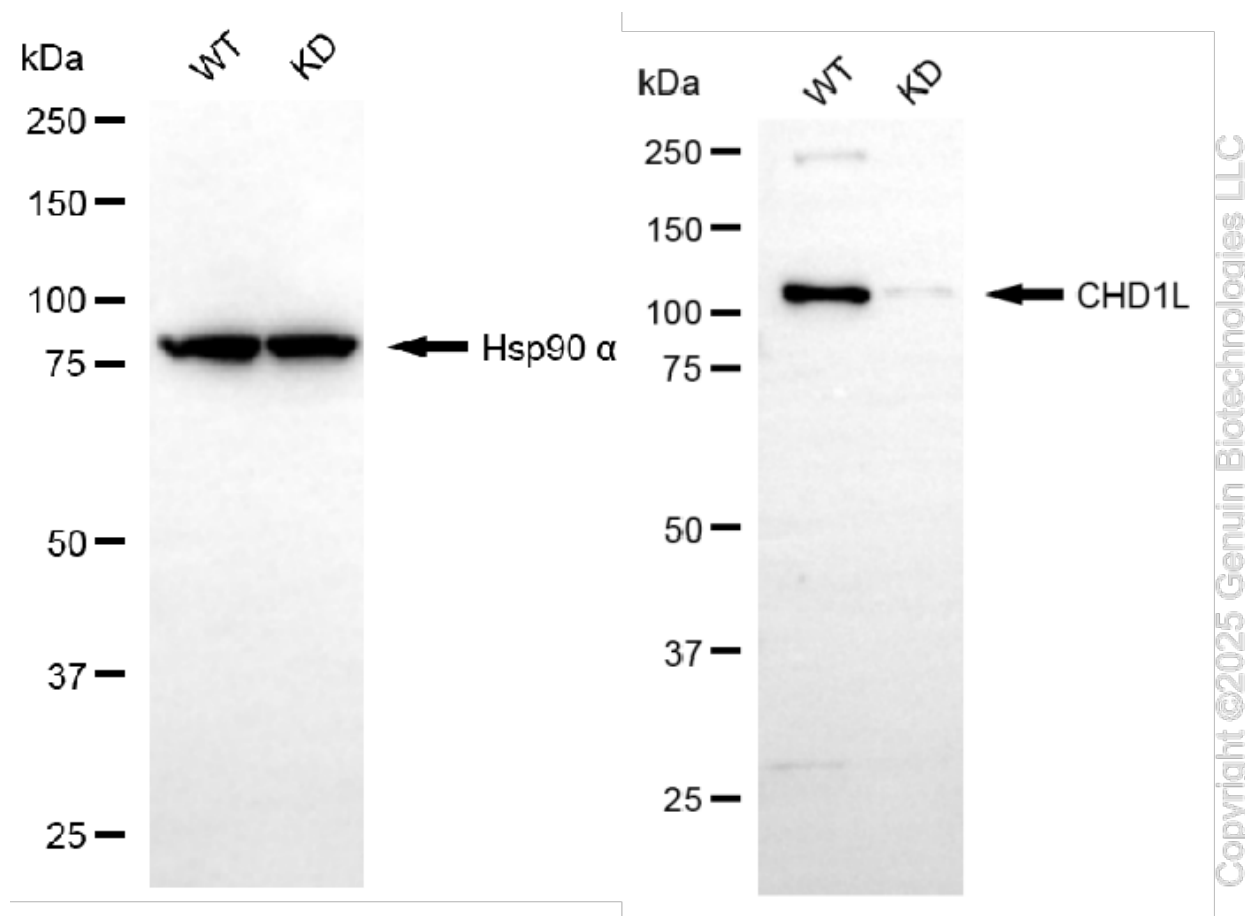
SALES@GENUINBIOTECH.COM  
FAX: +1-540-855-7041

**WWW.GENUINBIOTECH.COM**



Copyright ©2025 Genuin Biotechnologies LLC

Western blotting analysis using anti-CHD1L antibody (Cat#61316). Total cell lysates (30  $\mu$ g) from various cell lines were loaded and separated by SDS-PAGE. The blot was incubated with anti-CHD1L antibody (Cat#61316, 1:5,000) and HRP-conjugated goat anti-rabbit secondary antibody (Cat#201, 1:20,000) respectively. Image was developed using NaQ™ ECL Substrate Kit (Cat#716).



Western blotting analysis using anti-CHD1L antibody (Cat#61316). CHD1L expression in wild-type (WT) and CHD1L knockdown (KD) HeLa cells with 20 µg of total cell lysates. Hsp90 α serves as a loading control. The blot was incubated with anti-CHD1L antibody (Cat#61316, 1:5,000) and HRP-conjugated goat anti-rabbit secondary antibody (Cat#201, 1:20,000) respectively. Image was developed using NaQ™ ECL Substrate Kit (Cat#716).