

KD-Validated Anti-NF2 / Merlin Recombinant Rabbit Monoclonal Antibody



Catalog #: 61319

Aliases

NF2; NF2, Moesin-Ezrin-Radixin Like (MERLIN) Tumor Suppressor; SCH; Schwannomin; Merlin; BDNF; ACN; Neurofibromin 2 (Bilateral Acoustic Neuroma); Bilateral Acoustic Neurofibromatosis; Moesin-Ezrin-Radixin-Like Protein; Moesin-Ezrin-Radixin Like; Neurofibromin-2 ; Schwannomerlin; Merlin-1; Moesin-Ezrin-Radixin-Like Protein; Neurofibromin 2 (Merlin); MERLIN-1; MERLIN; SWNV

Background

Gene Name: NF2

NCBI Gene Entry: [4771](#)

UniProt Entry: [P35240](#)

Application Information

Molecular Weight: Predicted, 70 kDa, observed, 70 kDa

Clonality: Rabbit monoclonal antibody

Clone ID: 23GB2620

Species Reactivity: Human, mouse, rat

Applications Tested: Western blotting (WB), flow cytometry (FCM), immunocytochemistry (IC)

Immunogen

A synthesized peptide derived from human NF2 / Merlin

Isotype

Rabbit IgG

Storage Buffer

Supplied in PBS (pH 7.4) containing 50% glycerol, and 0.02% sodium azide.

Storage

Store at -20 °C for one year.

Recommended Dilutions

Western Blotting (WB): 1:1,000-1:5,000

Flow Cytometry (FCM): 1:2,000

Immunocytochemistry (IC): 1:100-1:1,000

SUPPORT

SUPPORT@GENUINBIOTECH.COM
TEL: +1-540-855-7041

ORDERS

SALES@GENUINBIOTECH.COM
FAX: +1-540-855-7041

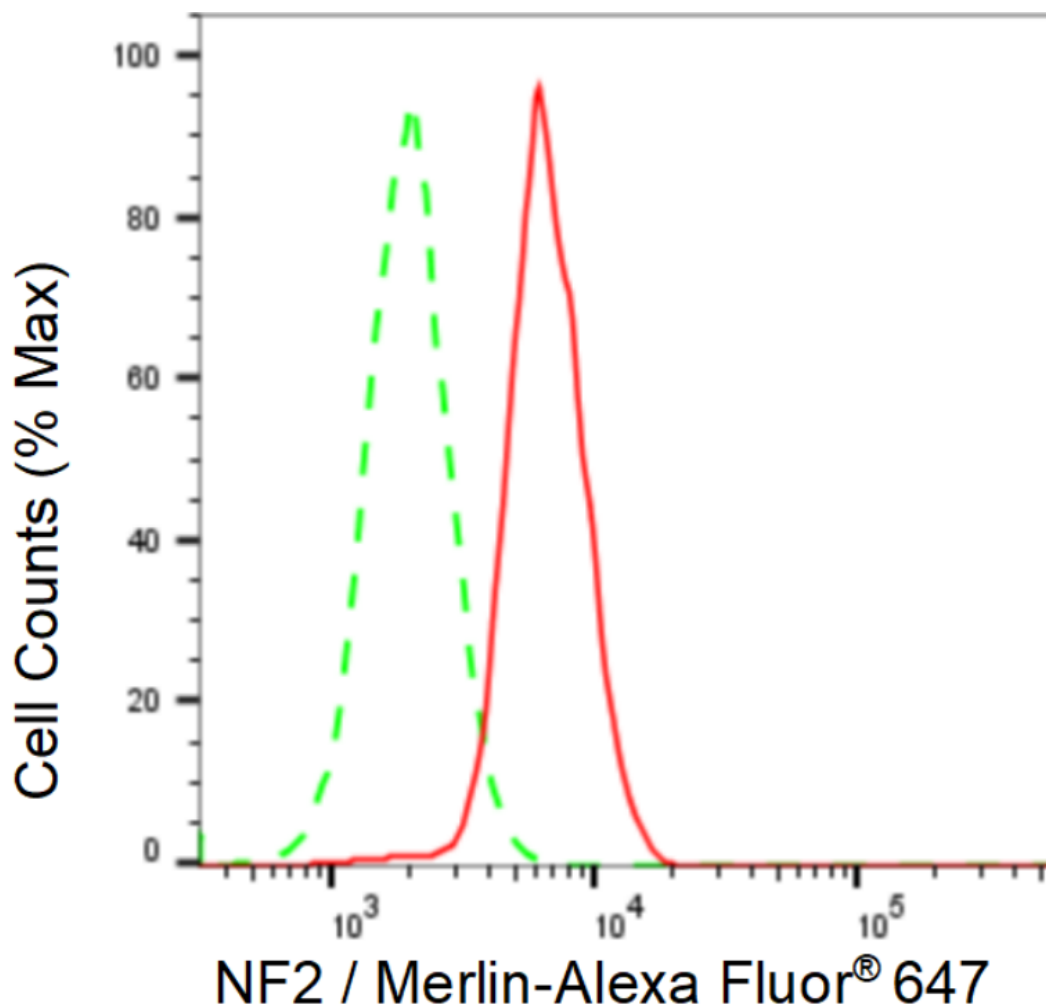
WWW.GENUINBIOTECH.COM

KD-Validated Anti-NF2 / Merlin Recombinant Rabbit Monoclonal Antibody

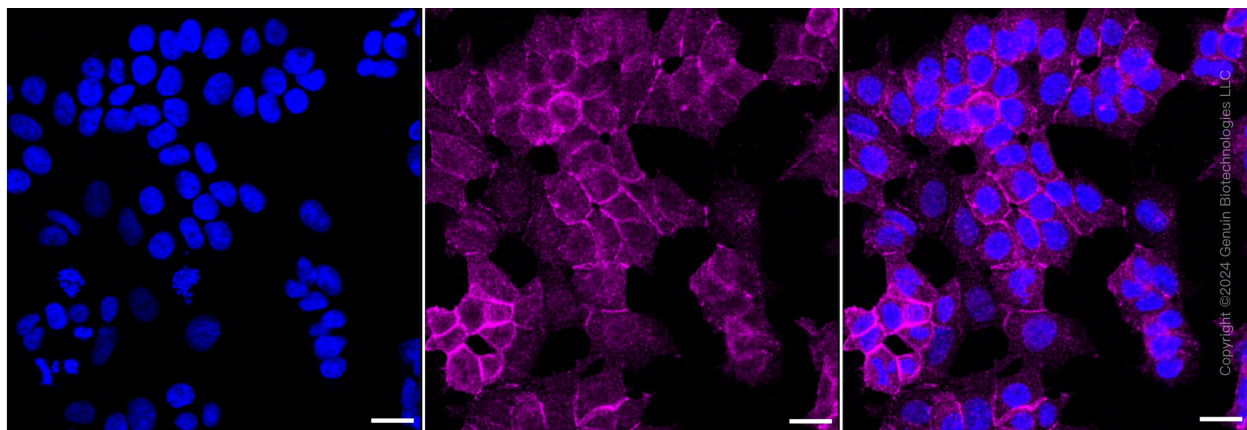
PAGE 2

Note: This product is for research use only.

Validation Data



Flow cytometric analysis of CAD expression in HepG2 cells using CAD antibody (Cat#61921, 1:2,000). Green, isotype control; red, CAD.



SUPPORT

SUPPORT@GENUINBIOTECH.COM
TEL: +1-540-855-7041

ORDERS

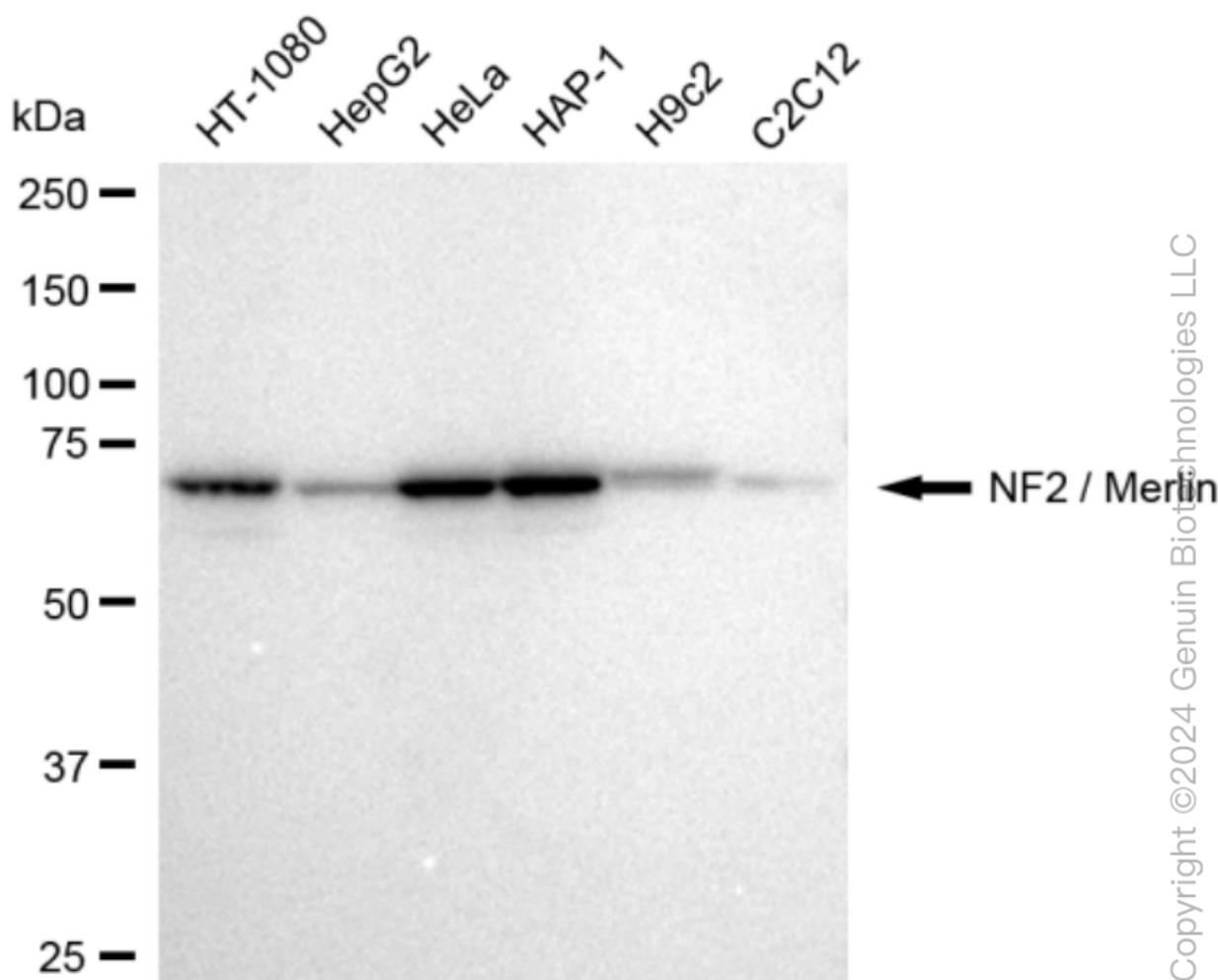
SALES@GENUINBIOTECH.COM
FAX: +1-540-855-7041

WWW.GENUINBIOTECH.COM

KD-Validated Anti-NF2 / Merlin Recombinant Rabbit Monoclonal Antibody

PAGE 3

Immunocytochemical staining of HepG2 cells with anti-CAD antibody (Cat#61921, 1:1,000). Nuclei were stained blue with DAPI; CAD was stained magenta with Alexa Fluor® 647. Images were taken using Leica stellaris 5. Protein abundance based on laser Intensity and smart gain: Medium. Scale bar, 20 µm.



Western blotting analysis using anti-CAD antibody (Cat#61921). Total cell lysates (30 µg) from various cell lines were loaded and separated by SDS-PAGE. The blot was incubated with anti-CAD antibody (Cat#61921, 1:5,000) and HRP-conjugated goat anti-rabbit secondary antibody (Cat#201, 1:20,000) respectively. Image was developed using NaQ™ ECL Substrate Kit (Cat#716).

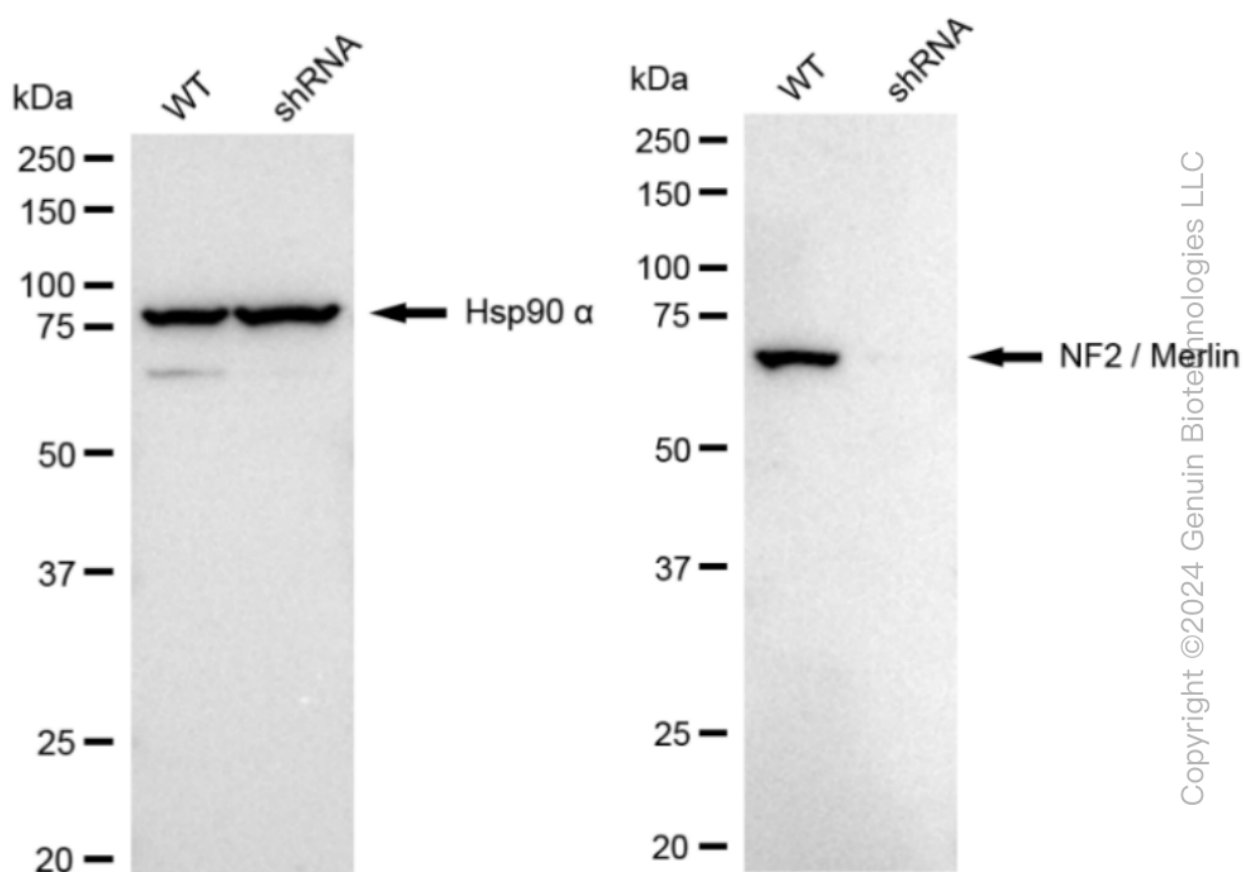
SUPPORT

SUPPORT@GENUINBIOTECH.COM
TEL: +1-540-855-7041

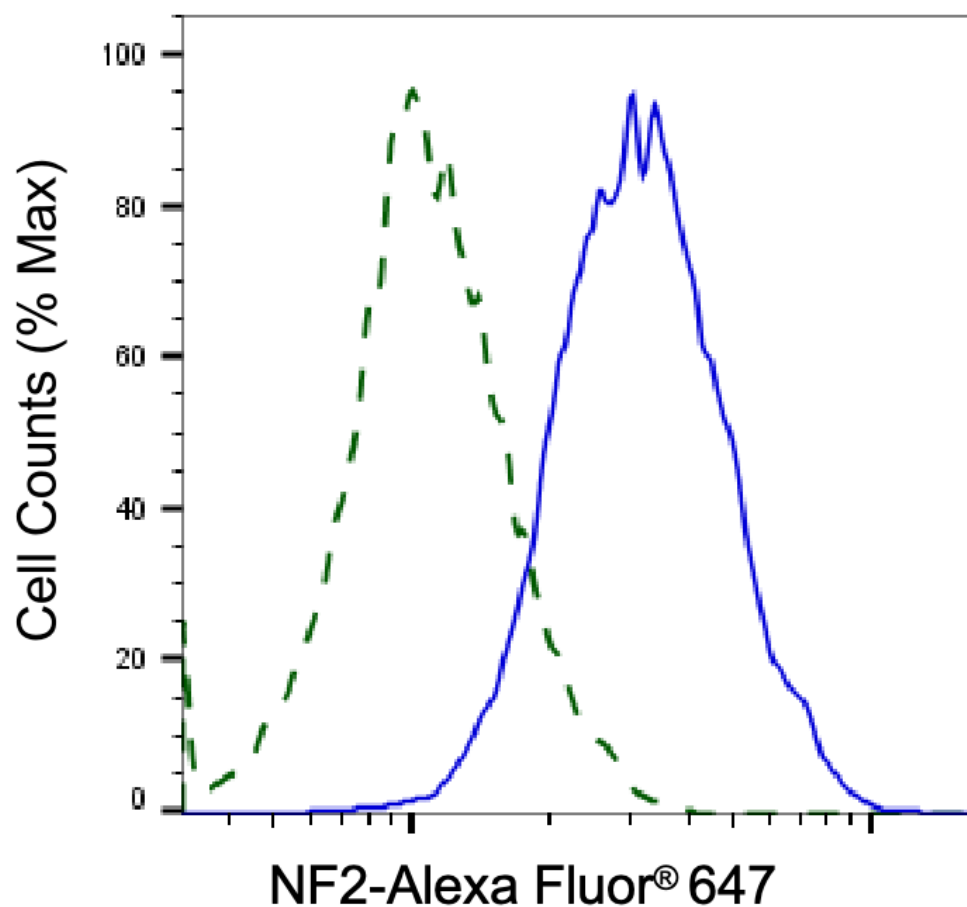
ORDERS

SALES@GENUINBIOTECH.COM
FAX: +1-540-855-7041

WWW.GENUINBIOTECH.COM

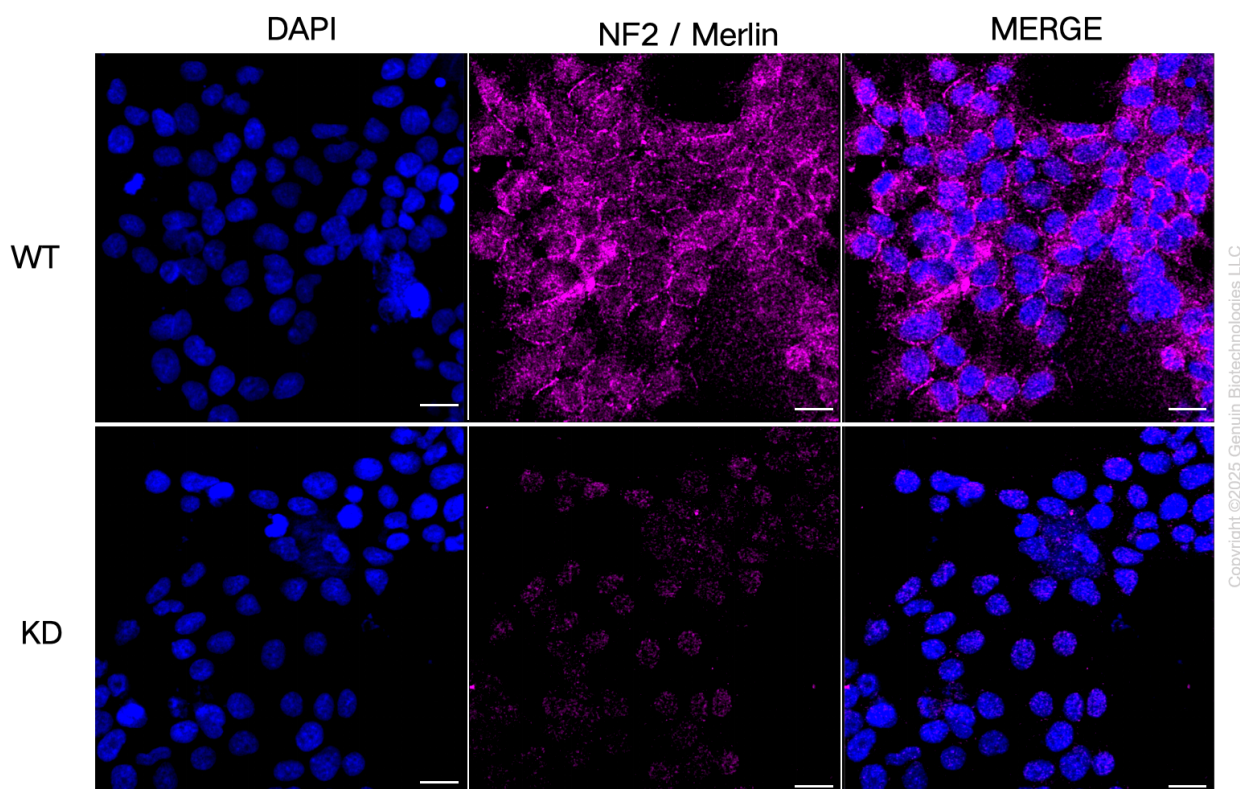


Western blotting analysis using anti-NF2 / Merlin antibody (Cat#61319). NF2 / Merlin expression in wild type (WT) and NF2 / Merlin shRNA knockdown (KD) HeLa cells with 20 µg of total cell lysates. Hsp90 α serves as a loading control. The blot was incubated with anti-NF2 / Merline antibody (Cat#61319, 1:5,000) and HRP-conjugated goat anti-rabbit secondary antibody (Cat#201, 1:20,000) respectively. Image was developed using NaQ™ ECL Substrate Kit (Cat#716).



Copyright ©2025 Genuin Biotechnologies LLC

Validation of NF2 knockdown using flow cytometry. Wild-type(WT, Blue) and knockdown(KD, Green) HeLa cells were stained with anti-NF2 antibody (Cat#61319, 1:2,000) and analyzed using BD flow cytometer.



Immunocytochemical staining of HeLa cells using anti-NF2 / Merlin antibody (Cat#61319, 1:1,000), Top panel: wild-type (WT); Bottom panel: NF2 / Merlin shRNA knockdown (KD). Nuclei were stained blue with DAPI; NF2 / Merlin was stained magenta with Alexa Fluor® 647. Scale bar, 20 μ m.