

# KD-Validated Anti-CDC34 Recombinant Rabbit Monoclonal Antibody



**Catalog #: 61321**

## Aliases

CDC34; Cell Division Cycle 34, Ubiquitin Conjugating Enzyme; UBE2R1; E2-CDC34; UBC3; (E3-Independent) E2 Ubiquitin-Conjugating Enzyme R1; Ubiquitin-Conjugating Enzyme E2-CDC34; Ubiquitin-Conjugating Enzyme E2 R1; E2 Ubiquitin-Conjugating Enzyme R1; Ubiquitin-Protein Ligase R1; UBCH3; Ubiquitin-Conjugating Enzyme E2-32 KDa Complementing; Ubiquitin-Conjugating Enzyme E2-32 KDa Complementing; Ubiquitin Conjugating Enzyme E2 R1; Cell Division Cycle 34 Homolog; Ubiquitin Carrier Protein; EC 2.3.2.23; EC 2.3.2.24; EC 6.3.2.19

## Background

Gene Name: CDC34  
NCBI Gene Entry: [997](#)  
UniProt Entry: [P49427](#)

## Application Information

Molecular Weight: Predicted, 27 kDa; observed, 34 kDa  
Clonality: Rabbit monoclonal antibody  
Clone ID: 25GB2245  
Species Reactivity: Human, mouse, rat  
Applications Tested: Western blotting (WB), flow cytometry (FCM), immunocytochemistry (IC)

## Immunogen

A synthesized peptide derived from human CDC34

## Isotype

Rabbit IgG

## Storage Buffer

Supplied in PBS (pH 7.4) containing 50% glycerol, and 0.02% sodium azide.

## Storage

Store at -20 °C for one year.

## Recommended Dilutions

Western blotting (WB): 1:1,000-1:5,000  
Flow Cytometry (FCM): 1:2,000

---

### SUPPORT

SUPPORT@GENUINBIOTECH.COM  
TEL: +1-540-855-7041

### ORDERS

SALES@GENUINBIOTECH.COM  
FAX: +1-540-855-7041

[WWW.GENUINBIOTECH.COM](http://WWW.GENUINBIOTECH.COM)

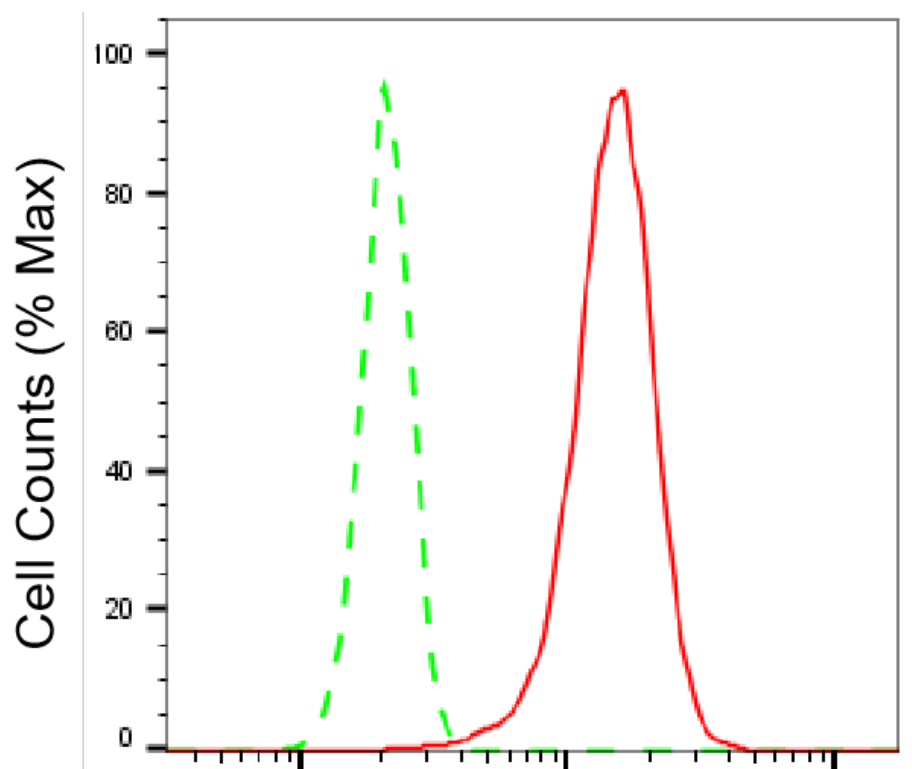
# KD-Validated Anti-CDC34 Recombinant Rabbit Monoclonal Antibody

PAGE 2

Immunocytochemistry (IC): 1:100-1:1,000

**Note:** This product is for research use only.

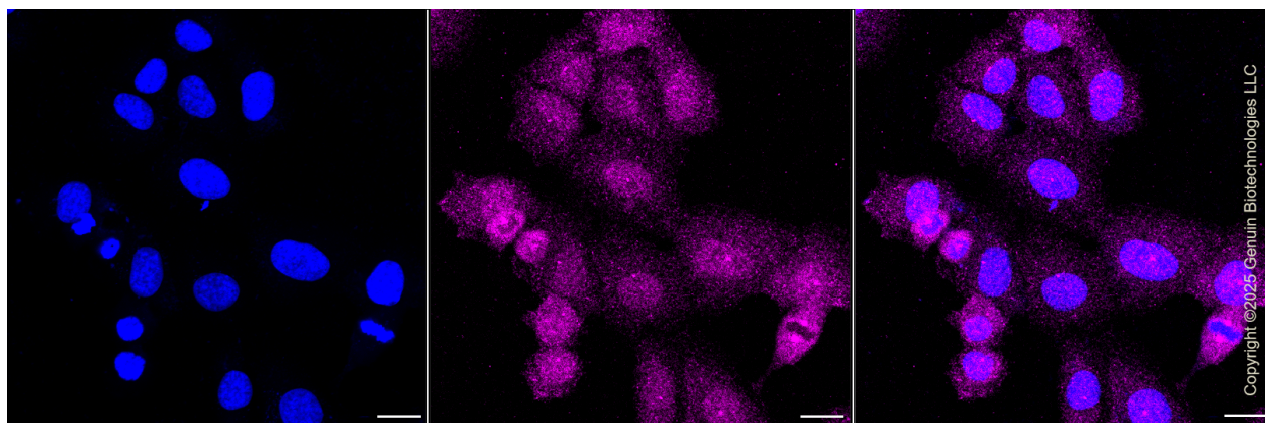
## Validation Data



Copyright ©2025 Genuin Biotechnologies LLC

## CDC34-Alexa Fluor® 647

Flow cytometric analysis of CDC34 expression in HT-1080 cells using CDC34 antibody (Cat#61321, 1:2,000). Green, isotype control; red, CDC34.



Copyright ©2025 Genuin Biotechnologies LLC

Immunocytochemical staining of HT-1080 cells with anti-CDC34 antibody (Cat#61321, 1:1,000).

### SUPPORT

SUPPORT@GENUINBIOTECH.COM  
TEL: +1-540-855-7041

### ORDERS

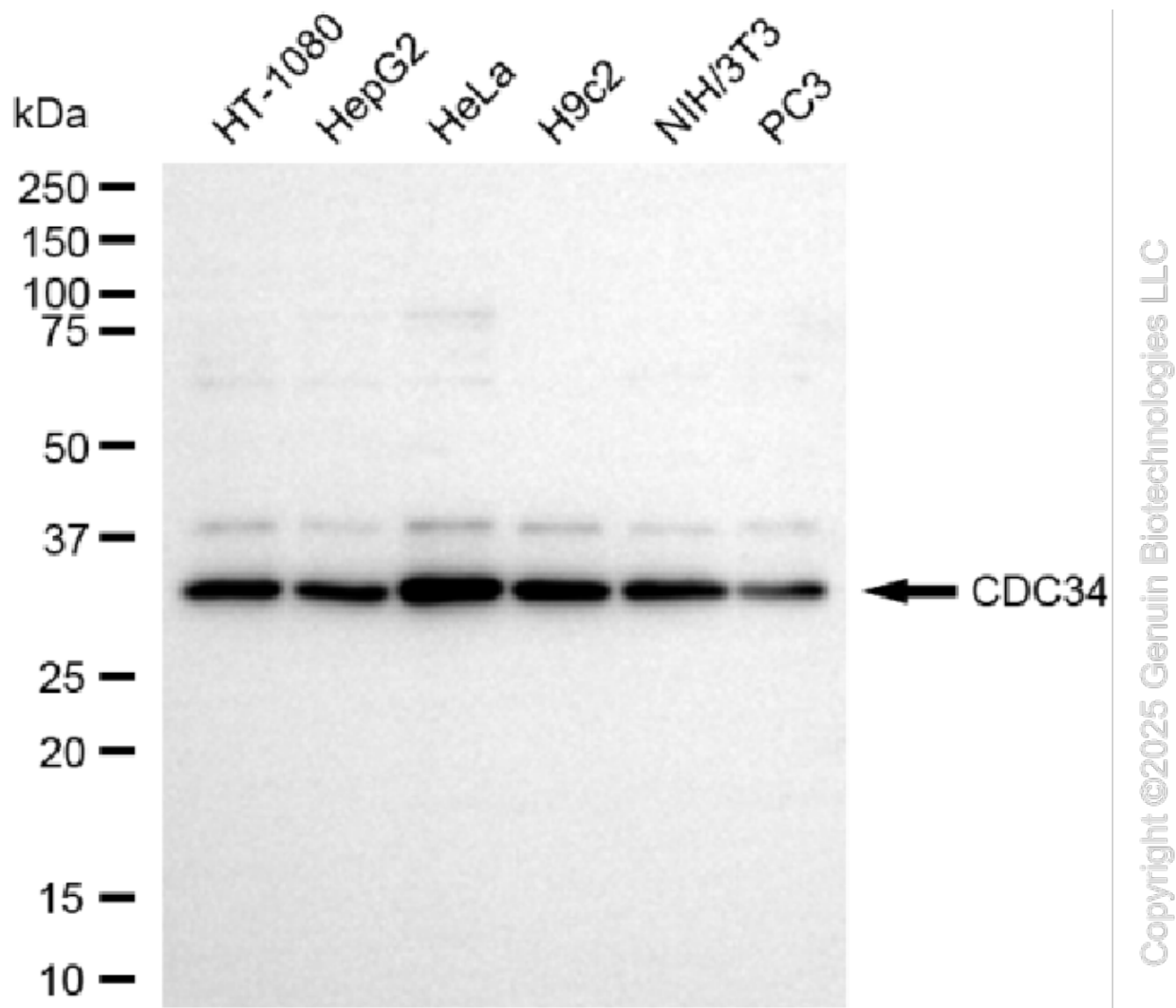
SALES@GENUINBIOTECH.COM  
FAX: +1-540-855-7041

WWW.GENUINBIOTECH.COM

## KD-Validated Anti-CDC34 Recombinant Rabbit Monoclonal Antibody

PAGE 3

Nuclei were stained blue with DAPI; CDC34 was stained magenta with Alexa Fluor® 647. Images were taken using Leica stellaris 5. Protein abundance based on laser Intensity and smart gain: Medium. Scale bar, 20 µm.



Western blotting analysis using anti-CDC34 antibody (Cat#61321). Total cell lysates (30 µg) from various cell lines were loaded and separated by SDS-PAGE. The blot was incubated with anti-CDC34 antibody (Cat#61321, 1:5,000) and HRP-conjugated goat anti-rabbit secondary antibody (Cat#201, 1:20,000) respectively. Image was developed using NaQ™ ECL Substrate Kit (Cat#716).

### SUPPORT

SUPPORT@GENUINBIOTECH.COM  
TEL: +1-540-855-7041

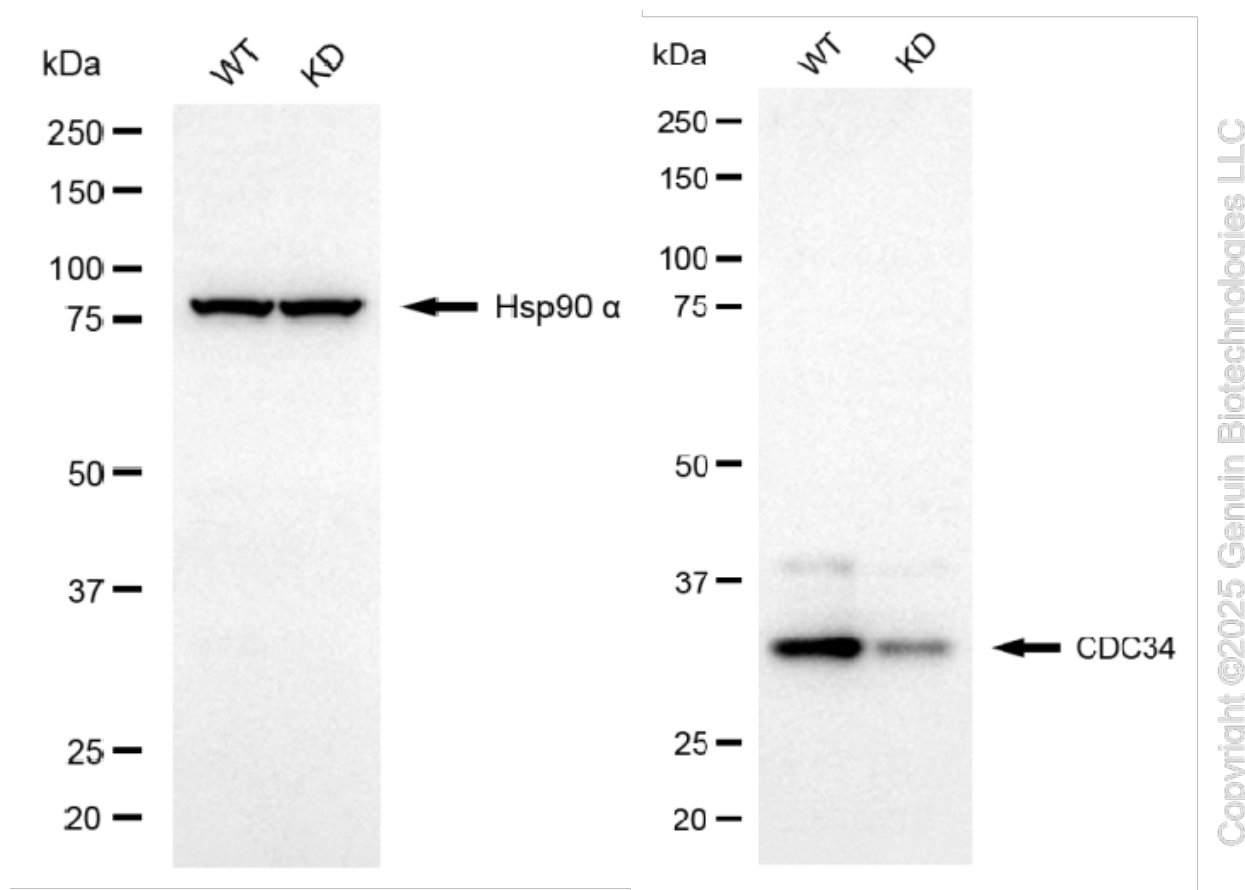
### ORDERS

SALES@GENUINBIOTECH.COM  
FAX: +1-540-855-7041

WWW.GENUINBIOTECH.COM

## KD-Validated Anti-CDC34 Recombinant Rabbit Monoclonal Antibody

PAGE 4



Western blotting analysis using anti-CDC34 antibody (Cat#61321). CDC34 expression in wild-type (WT) and CDC34 knockdown (KD) HeLa cells with 20 µg of total cell lysates. Hsp90 α serves as a loading control. The blot was incubated with anti-CDC34 antibody (Cat#61321, 1:5,000) and HRP-conjugated goat anti-rabbit secondary antibody (Cat#201, 1:20,000) respectively. Image was developed using FeQ™ ECL Substrate Kit (Cat#226).

### SUPPORT

SUPPORT@GENUINBIOTECH.COM  
TEL: +1-540-855-7041

### ORDERS

SALES@GENUINBIOTECH.COM  
FAX: +1-540-855-7041

[WWW.GENUINBIOTECH.COM](http://WWW.GENUINBIOTECH.COM)