

# KD-Validated Anti-XPB Recombinant Rabbit Monoclonal Antibody



**Catalog #: 61322**

## Aliases

ERCC2; ERCC Excision Repair 2, TFIIH Core Complex Helicase Subunit; EM9; XPD; Excision Repair Cross-Complementing Rodent Repair Deficiency, Complementation Group 2; General Transcription And DNA Repair Factor IIH Helicase Subunit XPD; TFIIH Basal Transcription Factor Complex Helicase XPB Subunit; TFIIH Basal Transcription Factor Complex 80 KDa Subunit; Xeroderma Pigmentosum Group D-Complementing Protein; Excision Repair Cross-Complementation Group 2; Xeroderma Pigmentosum Complementary Group D; DNA Repair Protein Complementing XP-D Cells; Basic Transcription Factor 2 80 KDa Subunit; DNA Excision Repair Protein ERCC-2; TFIIH 80 KDa Subunit; TFIIH Subunit XPD; MGC102762; MGC126218; MGC126219; TFIIH P80; BTF2 P80; CXPB; MAG; Excision Repair Cross-Complementing Rodent Repair Deficiency, Complementation Group 2 Protein; TFIIH Basal Transcription Factor Complex Helicase XPD Subunit; TFIIH Basal Transcription Factor Complex Helicase Subunit; EC 3.6.4.12; EC 3.6.1; COFS2; TFIIH; TTD1; XPB; TTD

## Background

Gene Name: ERCC2

NCBI Gene Entry: [2068](#)

UniProt Entry: [P18074](#)

## Application Information

Molecular Weight: Predicted, 87 kDa; observed, 75 kDa

Clonality: Rabbit monoclonal antibody

Clone ID: 25GB2260

Species Reactivity: Human, rat

Applications Tested: Western blotting (WB), flow cytometry (FCM), immunocytochemistry (IC)

## Immunogen

A synthesized peptide derived from human XPB

## Isotype

Rabbit IgG

## Storage Buffer

Supplied in PBS (pH 7.4) containing 50% glycerol, and 0.02% sodium azide.

## Storage

---

### SUPPORT

SUPPORT@GENUINBIOTECH.COM  
TEL: +1-540-855-7041

### ORDERS

SALES@GENUINBIOTECH.COM  
FAX: +1-540-855-7041

[WWW.GENUINBIOTECH.COM](http://WWW.GENUINBIOTECH.COM)

# KD-Validated Anti-XPD Recombinant Rabbit Monoclonal Antibody

PAGE 2

Store at -20 °C for one year.

## Recommended Dilutions

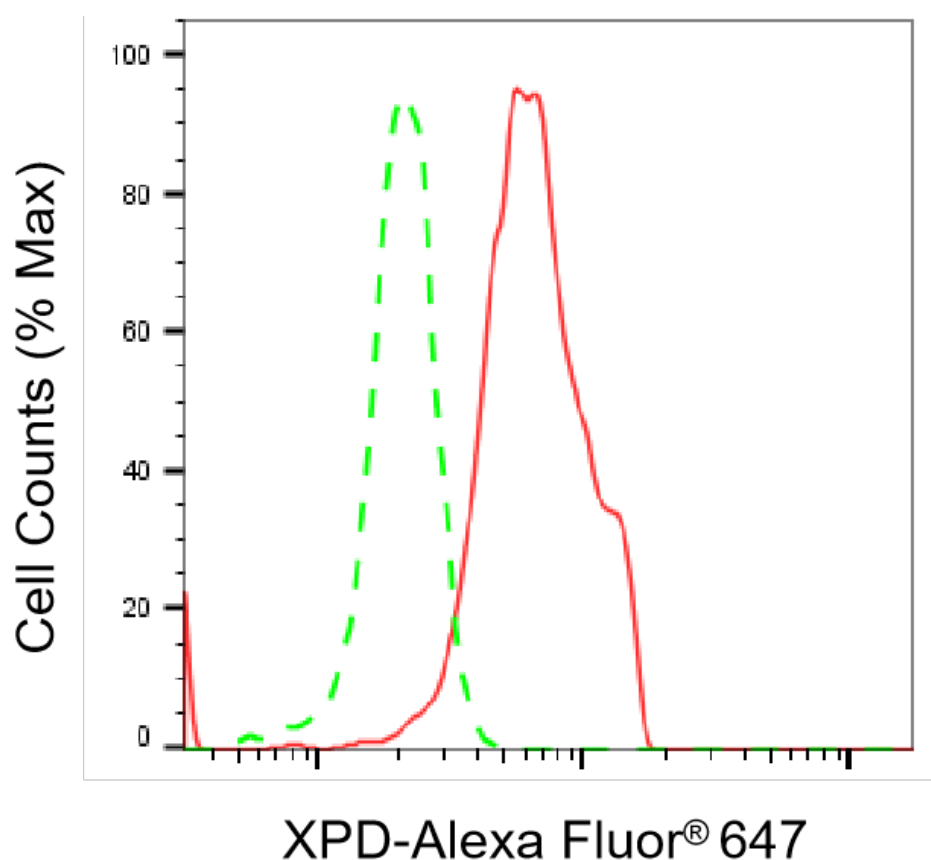
Western blotting (WB): 1:1,000-1:5,000

Flow Cytometry (FCM): 1:2,000

Immunocytochemistry (IC): 1:100-1:1,000

**Note:** This product is for research use only.

## Validation Data



Copyright ©2025 Genuin Biotechnologies LLC

Flow cytometric analysis of XPD expression in HeLa cells using XPD antibody (Cat#61322, 1:2,000). Green, isotype control; red, XPD.

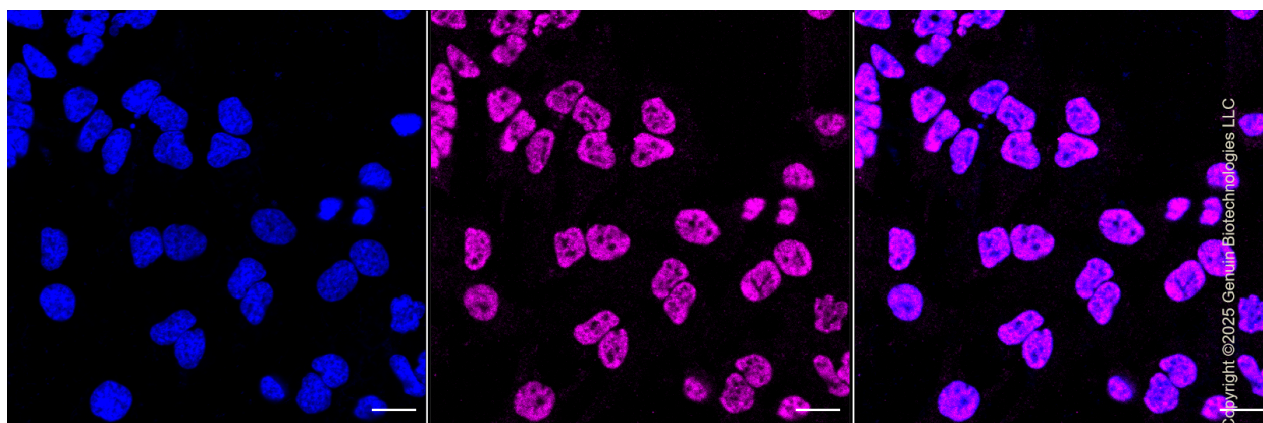
### SUPPORT

SUPPORT@GENUINBIOTECH.COM  
TEL: +1-540-855-7041

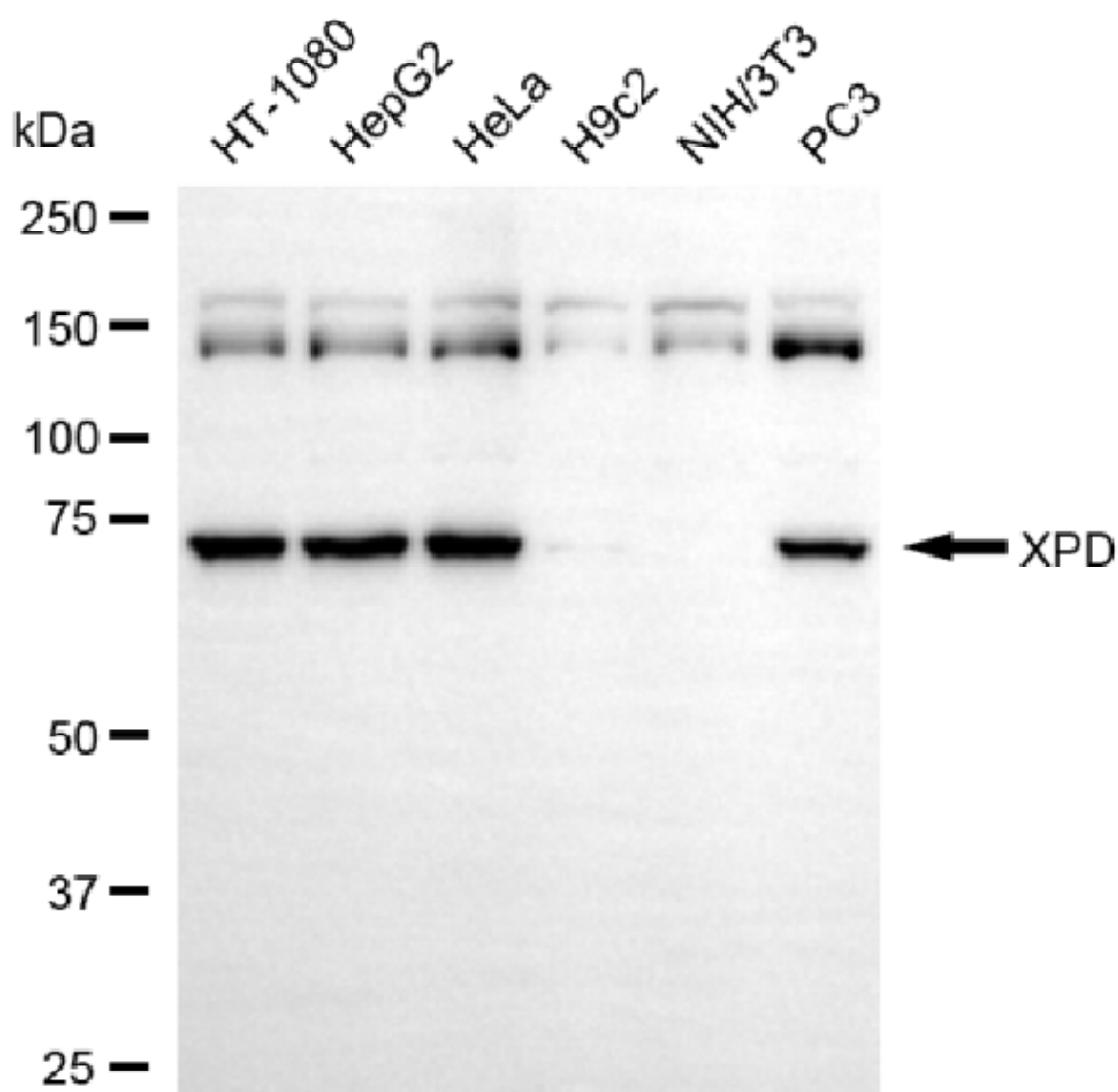
### ORDERS

SALES@GENUINBIOTECH.COM  
FAX: +1-540-855-7041

WWW.GENUINBIOTECH.COM



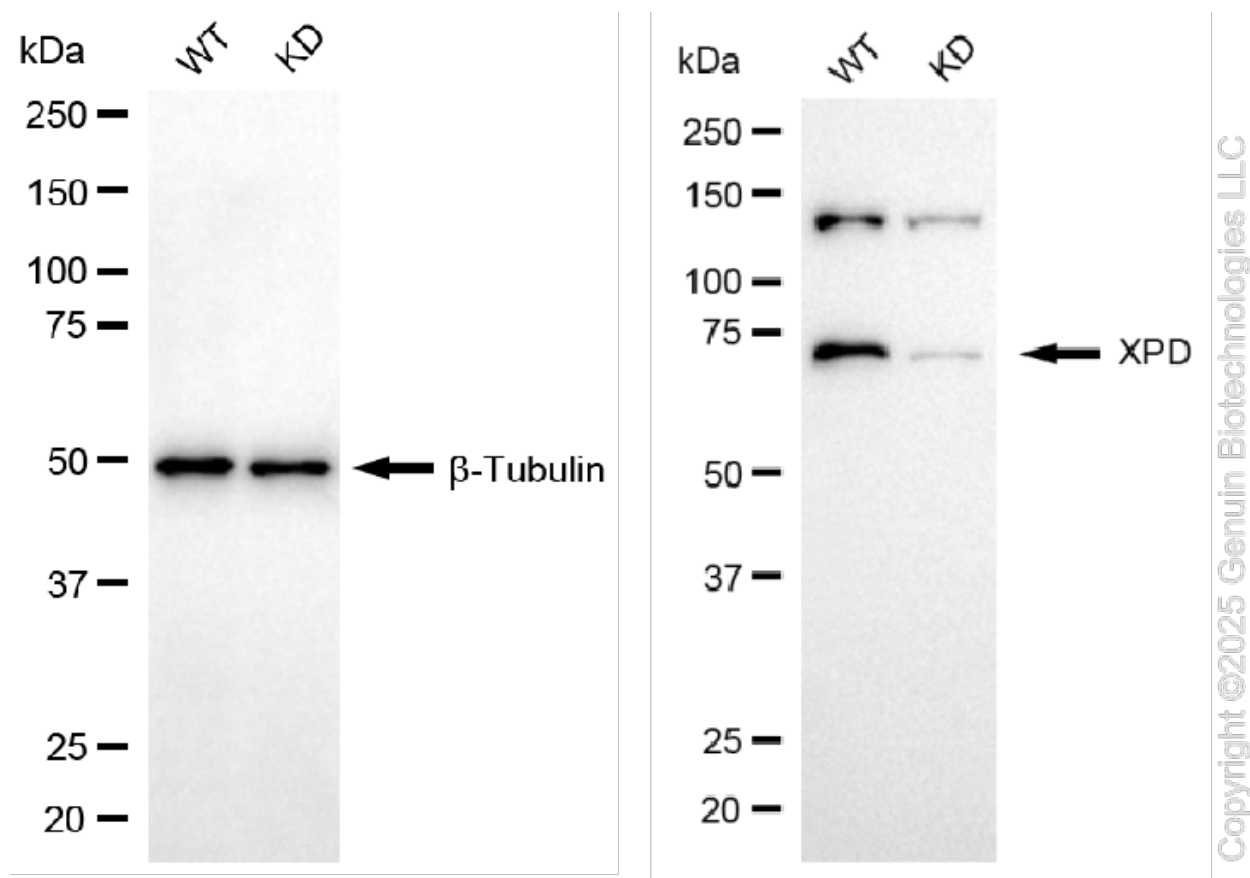
Immunocytochemical staining of HeLa cells with anti-XPD antibody (Cat#61322, 1:1,000). Nuclei were stained blue with DAPI; XPD was stained magenta with Alexa Fluor® 647. Images were taken using Leica stellaris 5. Protein abundance based on laser Intensity and smart gain: Medium. Scale bar, 20  $\mu$ m.



## KD-Validated Anti-XPB Recombinant Rabbit Monoclonal Antibody

PAGE 4

Western blotting analysis using anti-XPB antibody (Cat#61322). Total cell lysates (30 µg) from various cell lines were loaded and separated by SDS-PAGE. The blot was incubated with anti-XPB antibody (Cat#61322, 1:5,000) and HRP-conjugated goat anti-rabbit secondary antibody (Cat#201, 1:20,000) respectively. Image was developed using NaQ™ ECL Substrate Kit (Cat#716).



Western blotting analysis using anti-XPB antibody (Cat#61322). XPB expression in wild-type (WT) and ERCC2 knockdown (KD) 293T cells with 20 µg of total cell lysates. β-Tubulin serves as a loading control. The blot was incubated with anti-XPB antibody (Cat#61322, 1:5,000) and HRP-conjugated goat anti-rabbit secondary antibody (Cat#201, 1:20,000) respectively. Image was developed using NaQ™ ECL Substrate Kit (Cat#716).

### SUPPORT

SUPPORT@GENUINBIOTECH.COM  
TEL: +1-540-855-7041

### ORDERS

SALES@GENUINBIOTECH.COM  
FAX: +1-540-855-7041

WWW.GENUINBIOTECH.COM