

KD-Validated Anti-Chromodomain helicase DNA binding 4 Recombinant Rabbit



Catalog #: 61324

Aliases

CHD3; Chromodomain Helicase DNA Binding Protein 4; Chromodomain-Helicase-DNA-Binding Protein 4; Mi-2 Autoantigen 218 KDa Protein; ATP-Dependent Helicase CHD4; Mi2-BETA; Mi-2b; CHD-4; EC 3.6.4.12; MI2-BETA; Mi2-Beta; EC 3.6.1; SIHIWES; MI-2B

Background

Gene Name: CHD4

NCBI Gene Entry: [1108](#)

UniProt Entry: [Q14839](#)

Application Information

Molecular Weight: Predicted, 218 kDa, observed, 260 kDa

Clonality: Rabbit monoclonal antibody

Clone ID: 23GB1310

Species Reactivity: Human, mouse, rat

Applications Tested: Western blotting (WB), flow cytometry (FCM), immunocytochemistry (IC)

Immunogen

A synthesized peptide derived from human CHD4

Isotype

Rabbit IgG

Storage Buffer

Supplied in PBS (pH 7.4) containing 50% glycerol, and 0.02% sodium azide.

Storage

Store at -20 °C for one year.

Recommended Dilutions

Western Blotting (WB): 1:1,000-1:5,000

Flow Cytometry (FCM): 1:2,000

Immunocytochemistry (IC): 1:100-1:1,000

Note: This product is for research use only.

SUPPORT

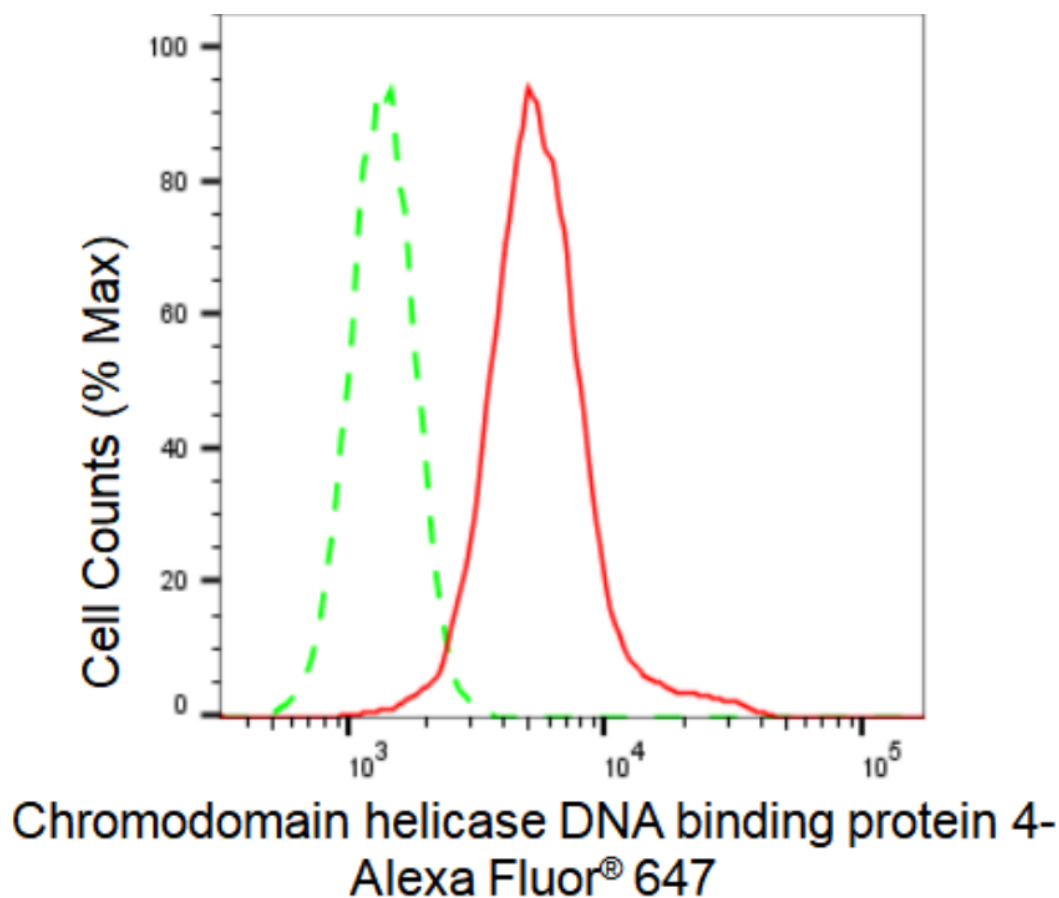
SUPPORT@GENUINBIOTECH.COM
TEL: +1-540-855-7041

ORDERS

SALES@GENUINBIOTECH.COM
FAX: +1-540-855-7041

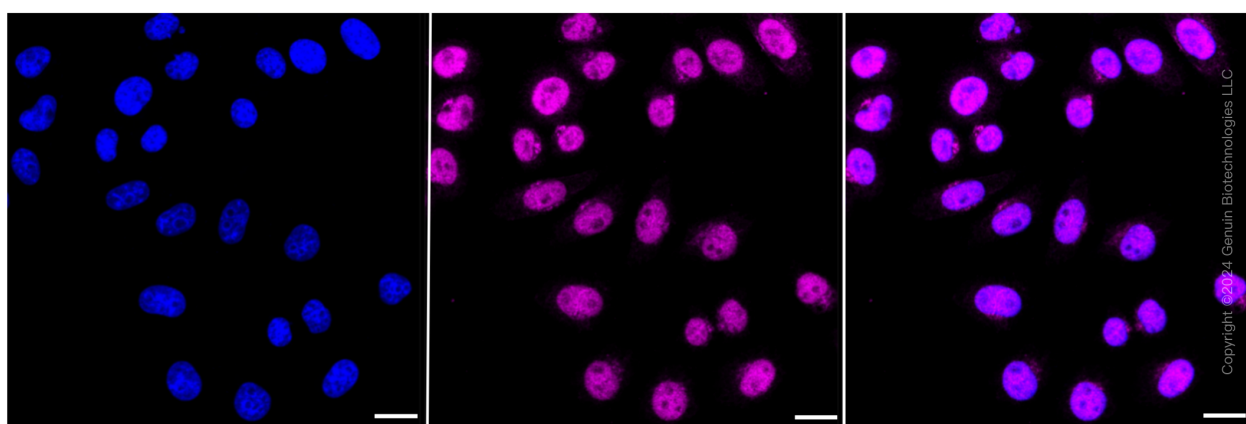
WWW.GENUINBIOTECH.COM

Validation Data



Copyright ©2024 Genuin Biotechnologies LLC

Flow cytometric analysis of Chromodomain helicase DNA binding protein 4 expression in HepG2 cells using Chromodomain helicase DNA binding protein 4 antibody (Cat#61324, 1:2,000). Green, isotype control; red, Chromodomain helicase DNA binding protein 4.



Immunocytochemical staining of HepG2 cells with Chromodomain helicase DNA binding protein 4 antibody (Cat#61324, 1:1,000). Nuclei were stained blue with DAPI; Chromodomain helicase DNA binding protein 4 was stained magenta with Alexa Fluor® 647. Images were taken using

SUPPORT

SUPPORT@GENUINBIOTECH.COM
TEL: +1-540-855-7041

ORDERS

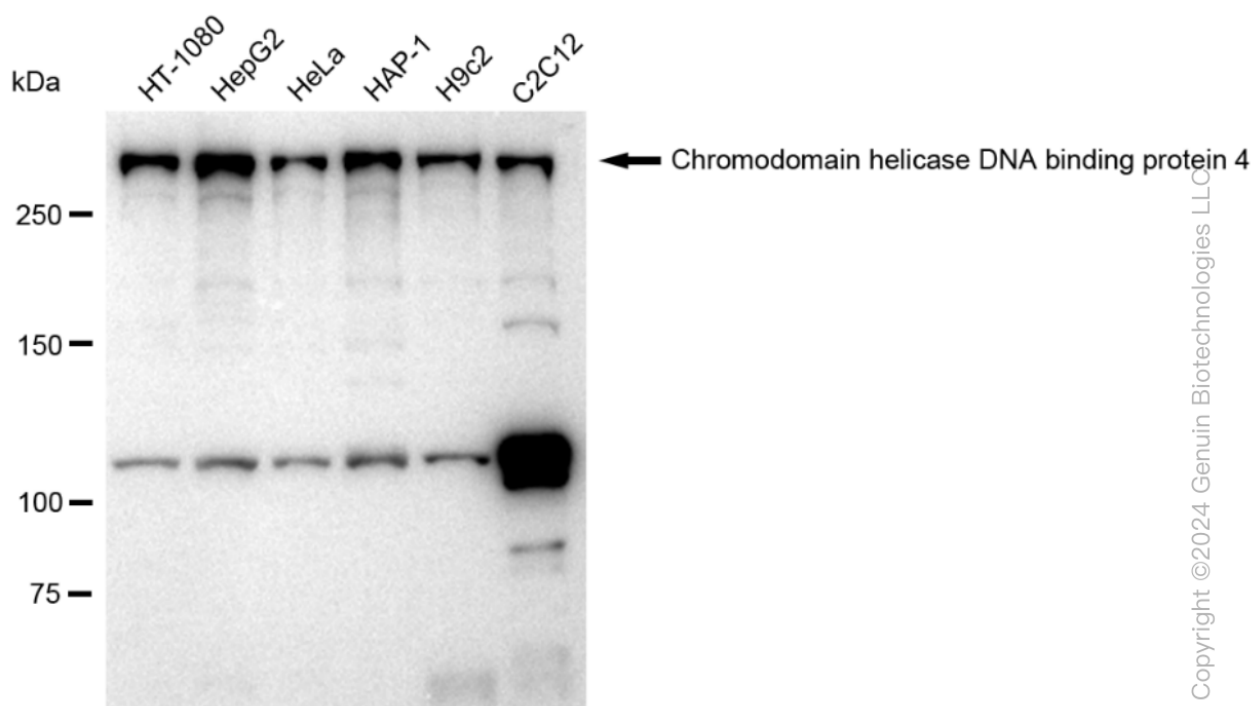
SALES@GENUINBIOTECH.COM
FAX: +1-540-855-7041

WWW.GENUINBIOTECH.COM

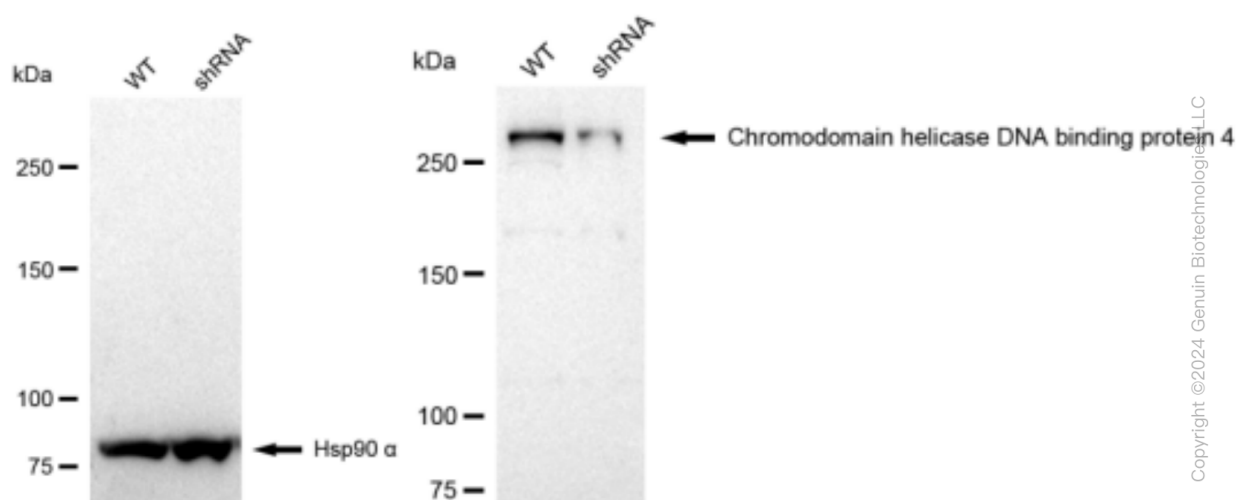
KD-Validated Anti-Chromodomain helicase DNA binding 4 Recombinant Rabbit

PAGE 3

Leica stellaris 5. Protein abundance based on laser Intensity and smart gain: High. Scale bar: 20 μ m.



Western blotting analysis using anti-Chromodomain helicase DNA binding protein 4 antibody (Cat#61324). Total cell lysates (30 μ g) from various cell lines were loaded and separated by SDS-PAGE. The blot was incubated with anti-Chromodomain helicase DNA binding protein 4 antibody (Cat#61324, 1:5,000) and HRP-conjugated goat anti-rabbit secondary antibody (Cat#201, 1:20,000) respectively. Image was developed using FeQTM ECL Substrate Kit (Cat#226).



Western blotting analysis using anti-Chromodomain helicase DNA binding protein 4 antibody (Cat#61324). Chromodomain helicase DNA binding protein 4 expression in wild type (WT) and

SUPPORT

SUPPORT@GENUINBIOTECH.COM
TEL: +1-540-855-7041

ORDERS

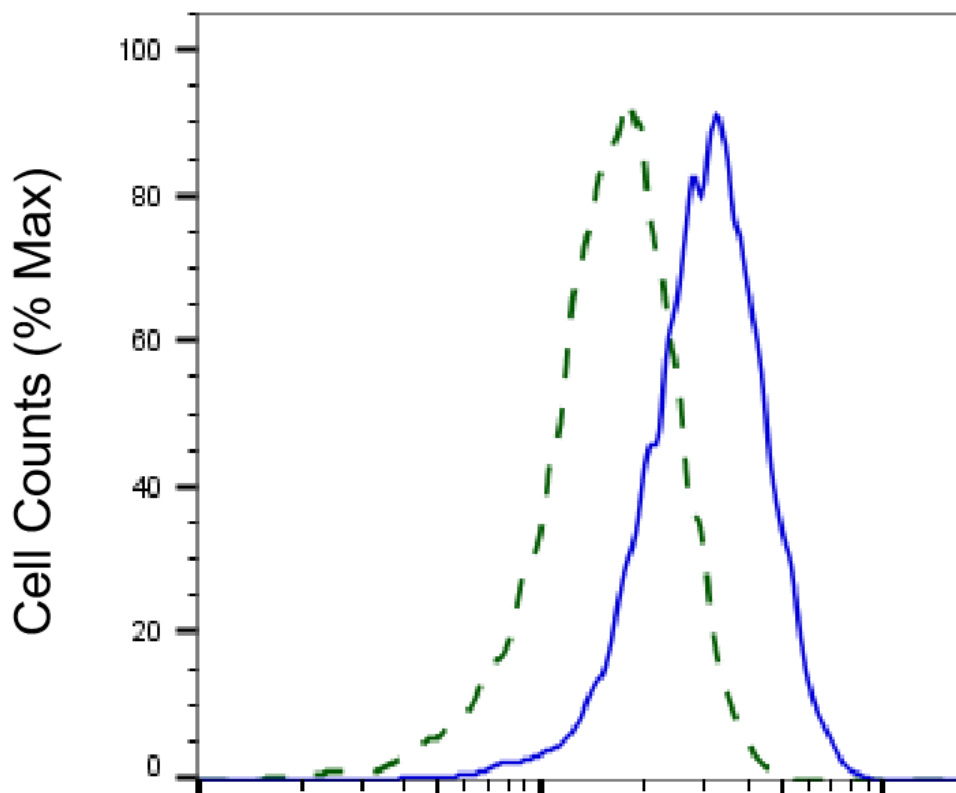
SALES@GENUINBIOTECH.COM
FAX: +1-540-855-7041

WWW.GENUINBIOTECH.COM

KD-Validated Anti-Chromodomain helicase DNA binding 4 Recombinant Rabbit

PAGE 4

Chromodomain helicase DNA binding protein 4 shRNA knockdown (KD) HeLa cells with 30 µg of total cell lysates. Hsp90 α serves as a loading control. The blot was incubated with anti-Chromodomain helicase DNA binding protein 4 antibody (Cat#61324, 1:5,000) and HRP-conjugated goat anti-rabbit secondary antibody (Cat#201, 1:20,000) respectively. Image was developed using FeQ™ ECL Substrate Kit (Cat#226).



Copyright ©2025 Genuin Biotechnologies LLC

Chromodomain helicase DNA binding protein 4-Alexa Fluor® 647

Validation of Chromodomain helicase DNA binding protein 4 knockdown using flow cytometry. Wild-type(WT, Blue) and knockdown(KD, Green) HeLa cells were stained with anti-Chromodomain helicase DNA binding protein 4 antibody (Cat#61324, 1:2,000) and analyzed using BD flow cytometer.

SUPPORT

SUPPORT@GENUINBIOTECH.COM
TEL: +1-540-855-7041

ORDERS

SALES@GENUINBIOTECH.COM
FAX: +1-540-855-7041

WWW.GENUINBIOTECH.COM