

KD-Validated Anti-CC2D1A Recombinant Rabbit Monoclonal Antibody



Catalog #: 61327

Aliases

CC2D1A; Coiled-Coil And C2 Domain Containing 1A; Five Prime Repressor Element Under Dual; Repression-Binding Protein 1; Akt Kinase-Interacting Protein 1; MRT3; TAPE; Coiled-Coil And C2 Domain-Containing Protein 1A; FRE Under Dual Repression-Binding Protein 1; Putative NF-Kappa-B-Activating Protein 023N; TBK1-Associated Protein In Endolysosomes 2; Lethal (2) Giant Discs Homolog 2; FLJ20241; Freud-1; FREUD-1; Aki-1; Lgd2; Five Repressor Element Under Dual Repression-Binding Protein 1; Mental Retardation, Nonsyndromic, Autosomal Recessive, 3; Putative NFkB Activating Protein; Freud-1/Aki1; AKI-1; LGD2; AKI1

Background

Gene Name: CC2D1A

NCBI Gene Entry: [54862](#)

UniProt Entry: [Q6P1N0](#)

Application Information

Molecular Weight: Predicted, 104 kDa, observed, 130 kDa

Clonality: Rabbit monoclonal antibody

Clone ID: 23GB3045

Species Reactivity: Human, mouse, rat

Applications Tested: Western blotting (WB), flow cytometry (FCM), immunocytochemistry (IC)

Immunogen

A synthesized peptide derived from CC2D1A

Isotype

Rabbit IgG

Storage Buffer

Supplied in PBS (pH 7.4) containing 50% glycerol, and 0.02% sodium azide.

Storage

Store at -20 °C for one year.

Recommended Dilutions

Western Blotting (WB): 1:1,000-1:5,000

Flow Cytometry (FCM): 1:2,000

SUPPORT

SUPPORT@GENUINBIOTECH.COM
TEL: +1-540-855-7041

ORDERS

SALES@GENUINBIOTECH.COM
FAX: +1-540-855-7041

WWW.GENUINBIOTECH.COM

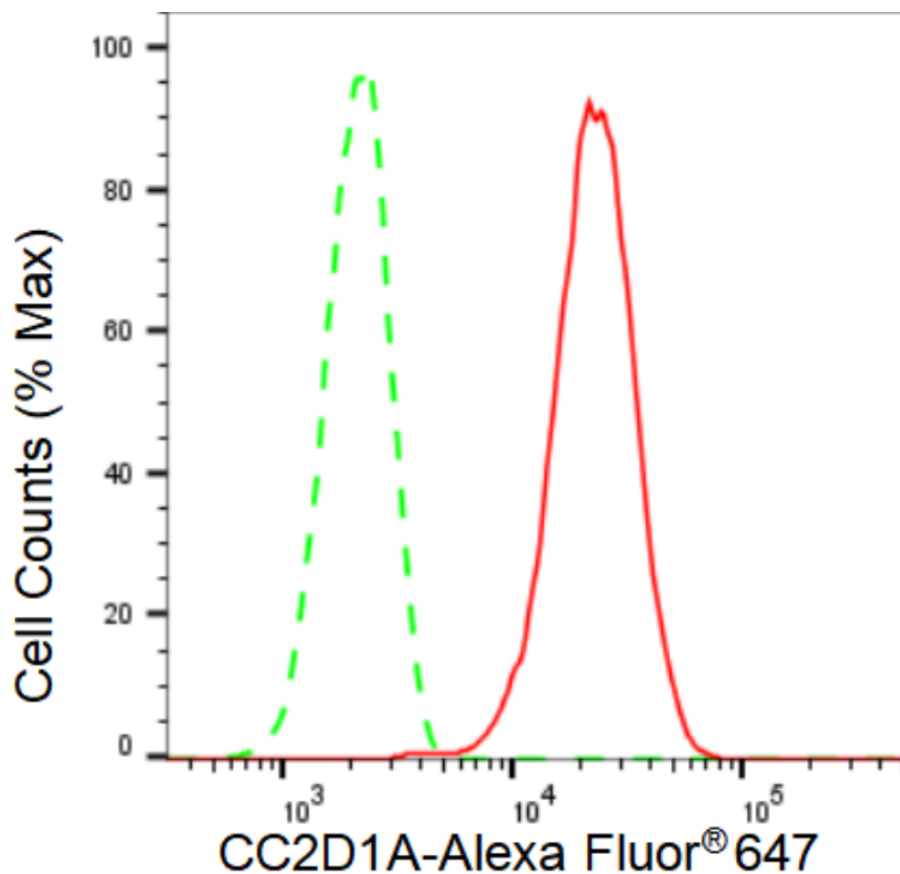
KD-Validated Anti-CC2D1A Recombinant Rabbit Monoclonal Antibody

PAGE 2

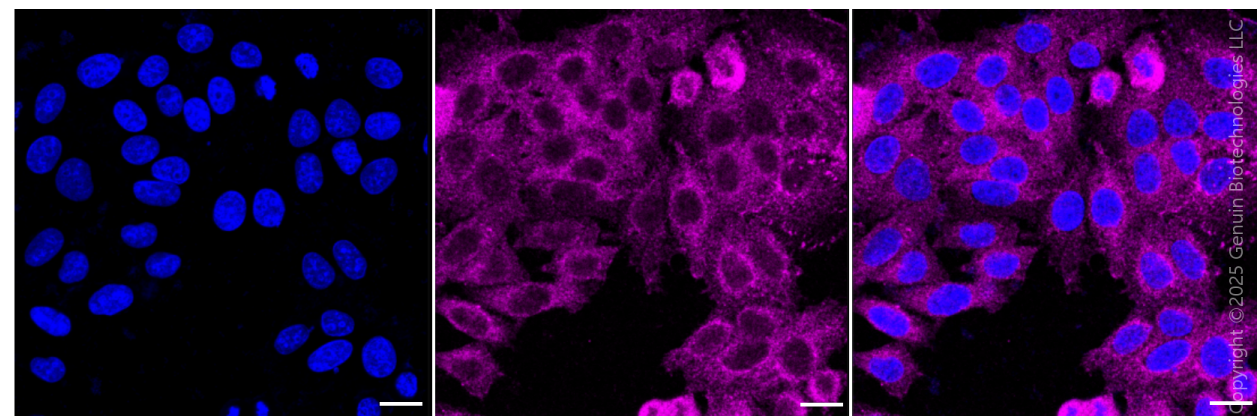
Immunocytochemistry (IC): 1:100-1:1,000

Note: This product is for research use only.

Validation Data



Copyright ©2024 Genuin Biotechnologies LLC



Copyright ©2025 Genuin Biotechnologies LLC

SUPPORT

SUPPORT@GENUINBIOTECH.COM
TEL: +1-540-855-7041

ORDERS

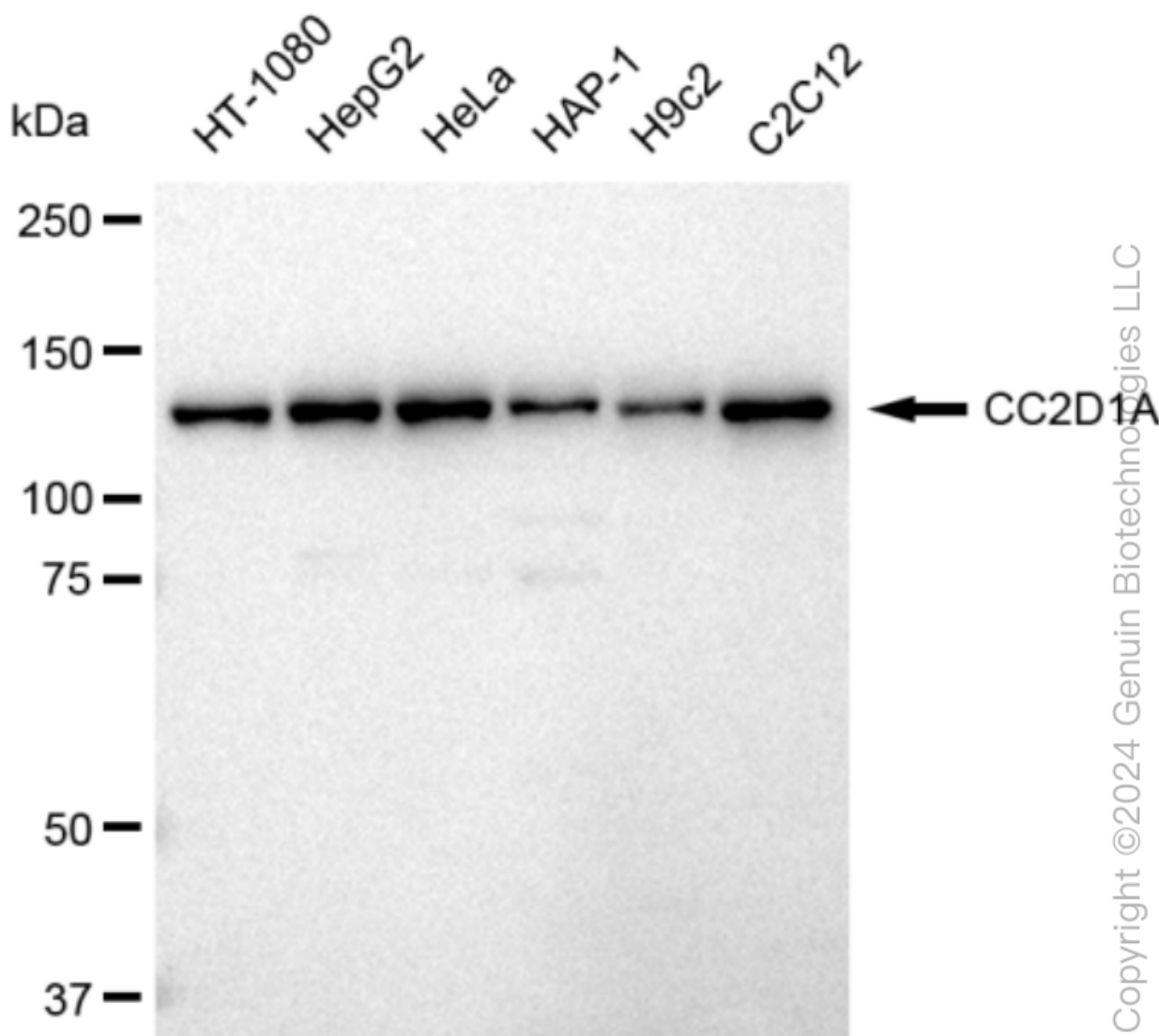
SALES@GENUINBIOTECH.COM
FAX: +1-540-855-7041

WWW.GENUINBIOTECH.COM

KD-Validated Anti-CC2D1A Recombinant Rabbit Monoclonal Antibody

PAGE 3

Nuclei were stained blue with DAPI; CC2D1A was stained magenta with Alexa Fluor® 647. Images were taken using Leica stellaris 5. Protein abundance based on laser Intensity and smart gain: Medium. Scale bar, 20 µm.



Western blotting analysis using anti-CC2D1A antibody (Cat#61327). Total cell lysates (30 µg) from various cell lines were loaded and separated by SDS-PAGE. The blot was incubated with anti-CC2D1A antibody (Cat#61327, 1:5,000) and HRP-conjugated goat anti-rabbit secondary antibody (Cat#201, 1:20,000) respectively. Image was developed using FeQ™ ECL Substrate Kit (Cat#226). CC2D1A, coiled-coil and C2 domain containing 1A.

SUPPORT

SUPPORT@GENUINBIOTECH.COM
TEL: +1-540-855-7041

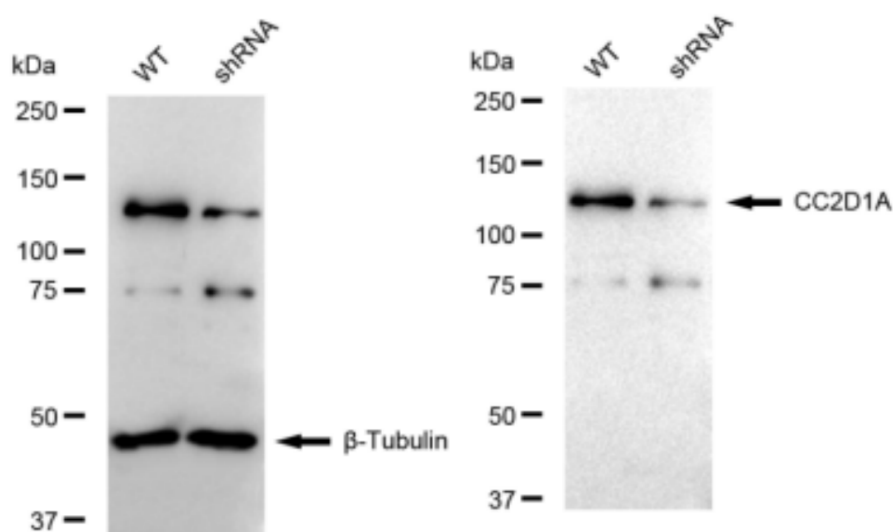
ORDERS

SALES@GENUINBIOTECH.COM
FAX: +1-540-855-7041

WWW.GENUINBIOTECH.COM

KD-Validated Anti-CC2D1A Recombinant Rabbit Monoclonal Antibody

PAGE 4



Copyright ©2024 Genuin Biotechnologies LLC

Western blotting analysis using anti-CC2D1A antibody (Cat#61327). CC2D1A expression in wild type (WT) and CC2D1A shRNA knockdown (KD) HeLa cells with 30 μ g of total cell lysates. β -Tubulin serves as a loading control. The blot was incubated with anti-CC2D1A antibody (Cat#61327, 1:5,000) and HRP-conjugated goat anti-rabbit secondary antibody (Cat#201, 1:20,000) respectively. Image was developed using FeQ™ ECL Substrate Kit (Cat#226).

SUPPORT

SUPPORT@GENUINBIOTECH.COM
TEL: +1-540-855-7041

ORDERS

SALES@GENUINBIOTECH.COM
FAX: +1-540-855-7041

WWW.GENUINBIOTECH.COM