

KD-Validated Anti-CIRBP Recombinant Rabbit Monoclonal Antibody



Catalog #: 61328

Aliases

CIRBP; Cold Inducible RNA Binding Protein; CIRP; Cold-Inducible RNA-Binding Protein; Glycine-Rich RNA Binding Protein; A18 HnRNP; Glycine-Rich RNA-Binding Protein CIRP; Cold Inducible RNA-Binding Protein; Testicular Tissue Protein Li 39; A18HNRNP

Background

Gene Name: CIRBP

NCBI Gene Entry: [1153](#)

UniProt Entry: [Q14011](#)

Application Information

Molecular Weight: Predicted, 19 kDa, observed, 19 kDa

Clonality: Rabbit monoclonal antibody

Clone ID: 23GB7980

Species Reactivity: Human

Applications Tested: Western blotting (WB), flow cytometry (FCM), immunocytochemistry (IC)

Immunogen

A synthesized peptide derived from CIRBP

Isotype

Rabbit IgG

Storage Buffer

Supplied in PBS (pH 7.4) containing 50% glycerol, and 0.02% sodium azide.

Storage

Store at -20 °C for one year.

Recommended Dilutions

Western Blotting (WB): 1:1,000-1:5,000

Flow Cytometry (FCM): 1:2,000

Immunocytochemistry (IC): 1:100-1:1,000

Note: This product is for research use only.

SUPPORT

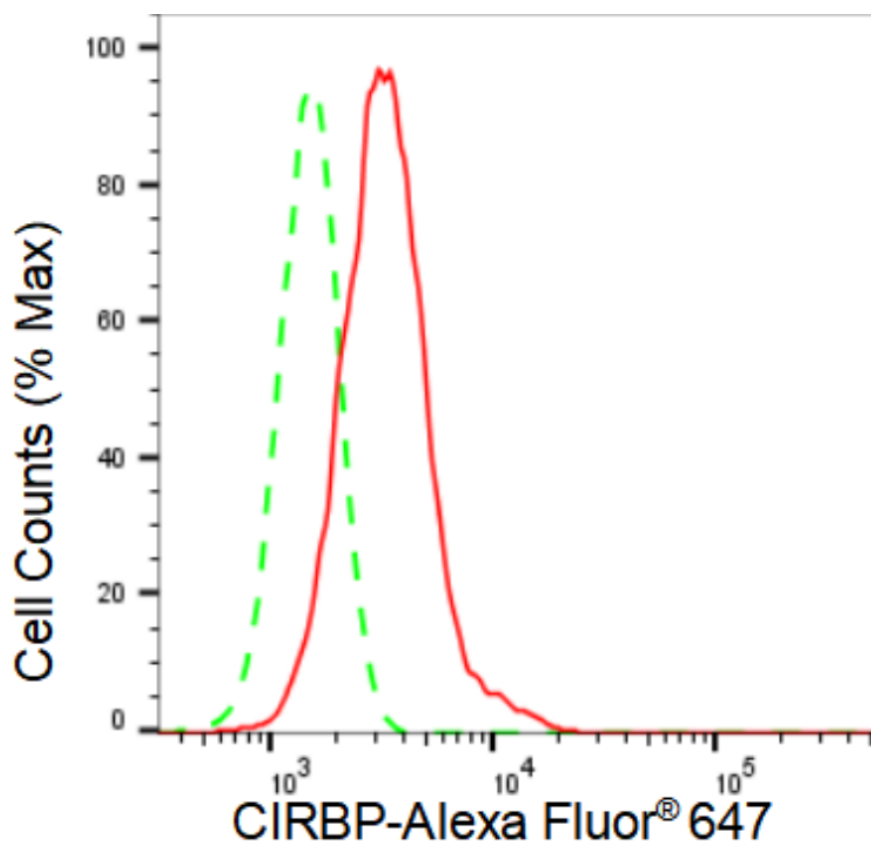
SUPPORT@GENUINBIOTECH.COM
TEL: +1-540-855-7041

ORDERS

SALES@GENUINBIOTECH.COM
FAX: +1-540-855-7041

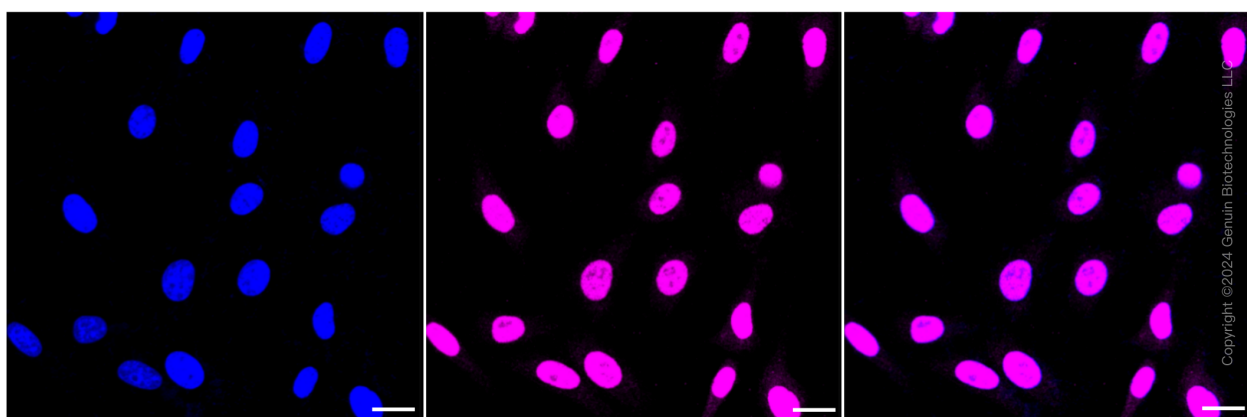
WWW.GENUINBIOTECH.COM

Validation Data



Copyright ©2024 Genuin Biotechnologies LLC

Flow cytometric analysis of CIRBP expression in HepG2 cells using CIRBP antibody (Cat#61328, 1:2,000). Green, isotype control; red, CIRBP.



Copyright ©2024 Genuin Biotechnologies LLC

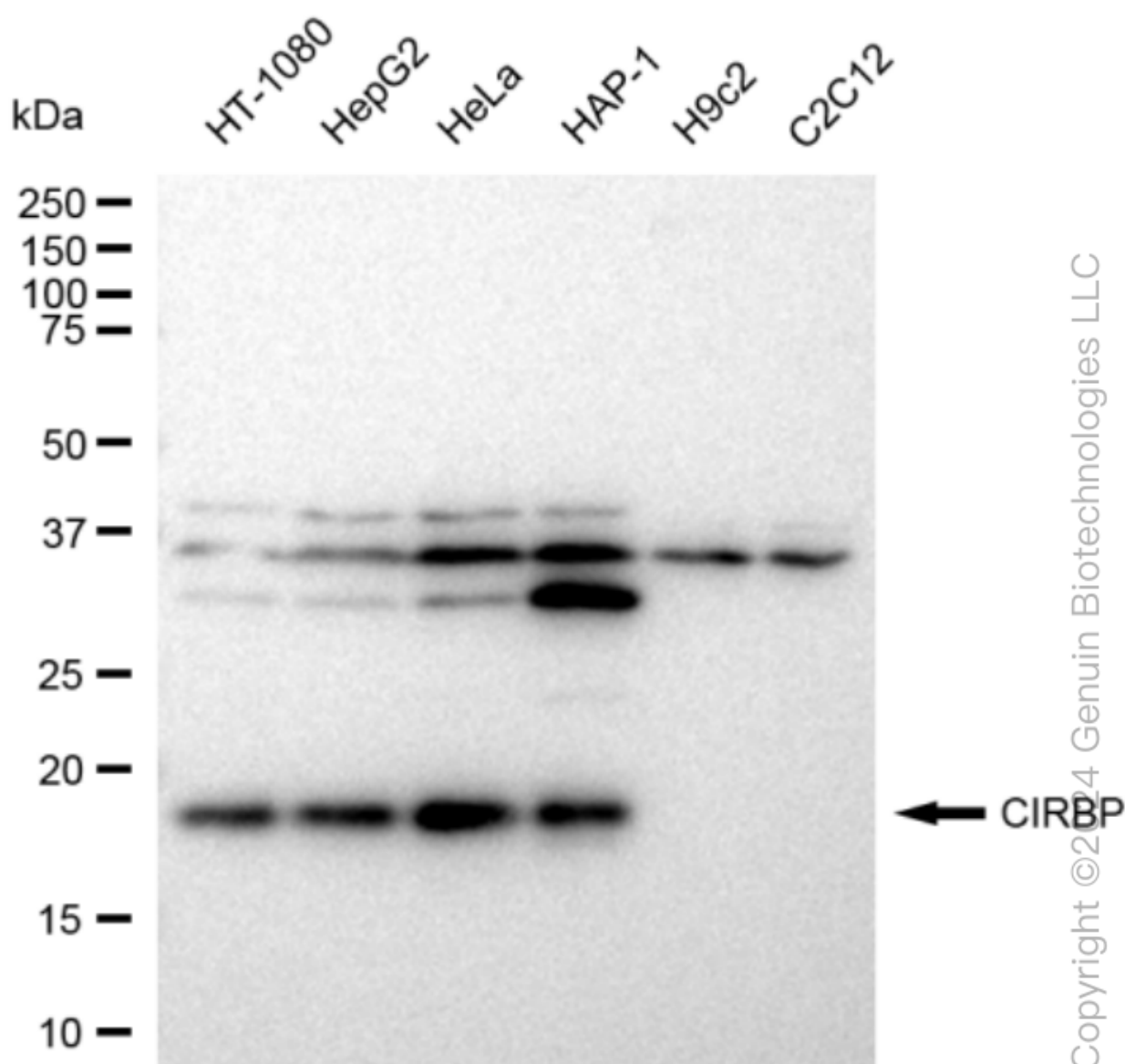
SUPPORT

SUPPORT@GENUINBIOTECH.COM
TEL: +1-540-855-7041

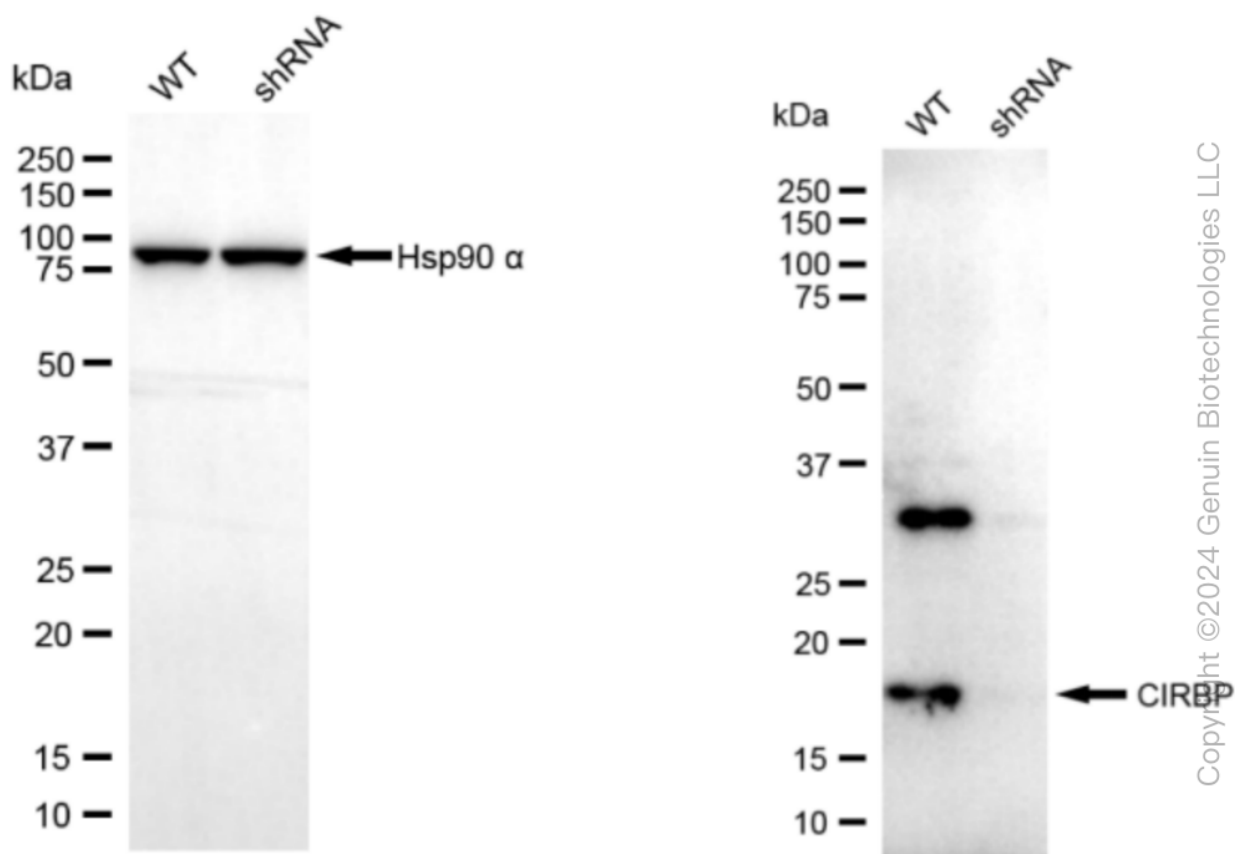
ORDERS

SALES@GENUINBIOTECH.COM
FAX: +1-540-855-7041

WWW.GENUINBIOTECH.COM



Western blotting analysis using anti-CIRBP antibody (Cat#61328). Total cell lysates (30 μ g) from various cell lines were loaded and separated by SDS-PAGE. The blot was incubated with anti-CIRBP antibody (Cat#61328, 1:5,000) and HRP-conjugated goat anti-rabbit secondary antibody (Cat#201, 1:20,000) respectively. Image was developed using FeQ™ ECL Substrate Kit (Cat#226). CIRBP, cold inducible RNA binding protein.



Western blotting analysis using anti-CIRBP antibody (Cat#61328). CIRBP expression in wild type (WT) and CIRBP shRNA knockdown (KD) HeLa cells with 30 µg of total cell lysates. β-Tubulin serves as a loading control. The blot was incubated with anti-CIRBP antibody (Cat#61328, 1:5,000) and HRP-conjugated goat anti-rabbit secondary antibody (Cat#201, 1:20,000) respectively. Image was developed using FeQ™ ECL Substrate Kit (Cat#226).