

# KD-Validated Anti-Aurora kinase B Recombinant Rabbit Monoclonal Antibody



**Catalog #: 61330**

## Aliases

AURKB; Aurora Kinase B; AIM-1; ARK2; STK5; PPP1R48; STK12; IPL1; AIK2; Protein Phosphatase 1, Regulatory Subunit 48; Serine/Threonine-Protein Kinase Aurora-B; Serine/Threonine-Protein Kinase 12; Serine/Threonine-Protein Kinase 5; Aurora/IPL1-Related Kinase; Serine/Threonine Kinase 12; Aurora-Related Kinase; EC 2.7.11.1; Aurora-B; Aurora-1; ARK-2; STK-1; AurB; AIM1; Aurora- And Ipl1-Like Midbody-Associated Protein 1 Homolog (Rat); Aurora- And Ipl1-Like Midbody-Associated Protein 1 Homolog; Aurora- And Ipl1-Like Midbody-Associated Protein 1; Aurora- And IPL1-Like Midbody-Associated Protein 1; Aurora Kinase B-Sv1; Aurora Kinase B-Sv2; Aurkb-Sv1; Aurkb-Sv2; EC 2.7.11; Aurora 1; AIRK2; Aik2; AURB; STK1

## Background

Gene Name: AURKB

NCBI Gene Entry: [9212](#)

UniProt Entry: [Q96GD4](#)

## Application Information

Molecular Weight: Predicted, 39 kDa; observed, 37 kDa

Clonality: Rabbit monoclonal antibody

Clone ID: 25GB2295

Species Reactivity: Human

Applications Tested: Western blotting (WB), flow cytometry (FCM), immunocytochemistry (IC)

## Immunogen

A synthesized peptide derived from human Aurora B

## Isotype

Rabbit IgG

## Storage Buffer

Supplied in PBS (pH 7.4) containing 50% glycerol, and 0.02% sodium azide.

## Storage

Store at -20 °C for one year.

## Recommended Dilutions

---

### SUPPORT

SUPPORT@GENUINBIOTECH.COM  
TEL: +1-540-855-7041

### ORDERS

SALES@GENUINBIOTECH.COM  
FAX: +1-540-855-7041

[WWW.GENUINBIOTECH.COM](http://WWW.GENUINBIOTECH.COM)

## KD-Validated Anti-Aurora kinase B Recombinant Rabbit Monoclonal Antibody

PAGE 2

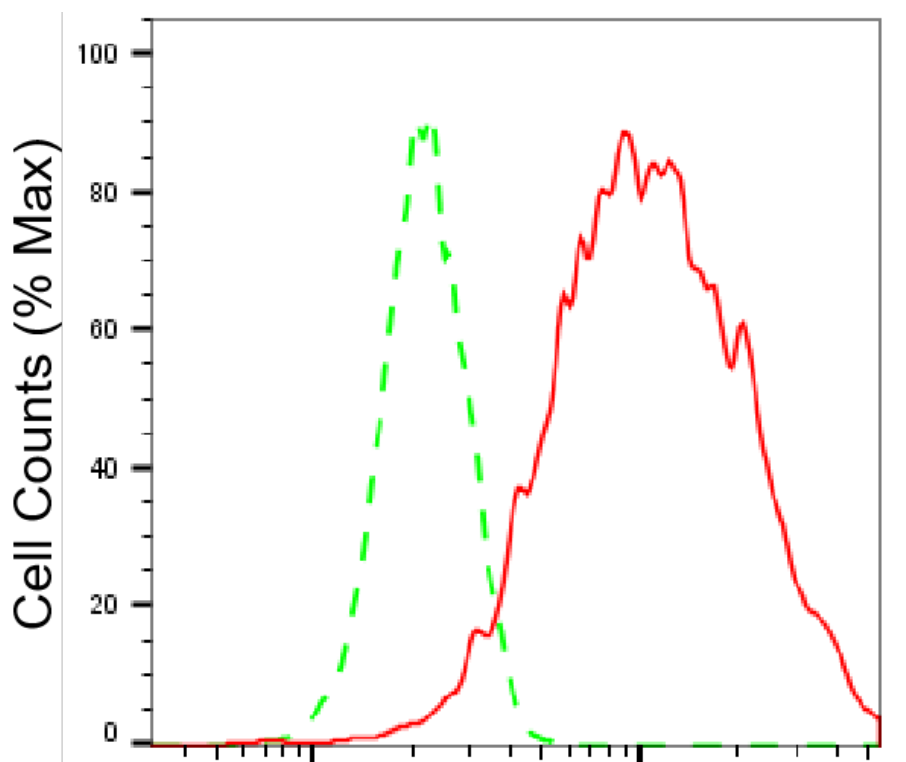
Western Blotting (WB): 1:1,000-1:5,000

Flow Cytometry (FCM): 1:2,000

Immunocytochemistry (IC): 1:100-1:1,000

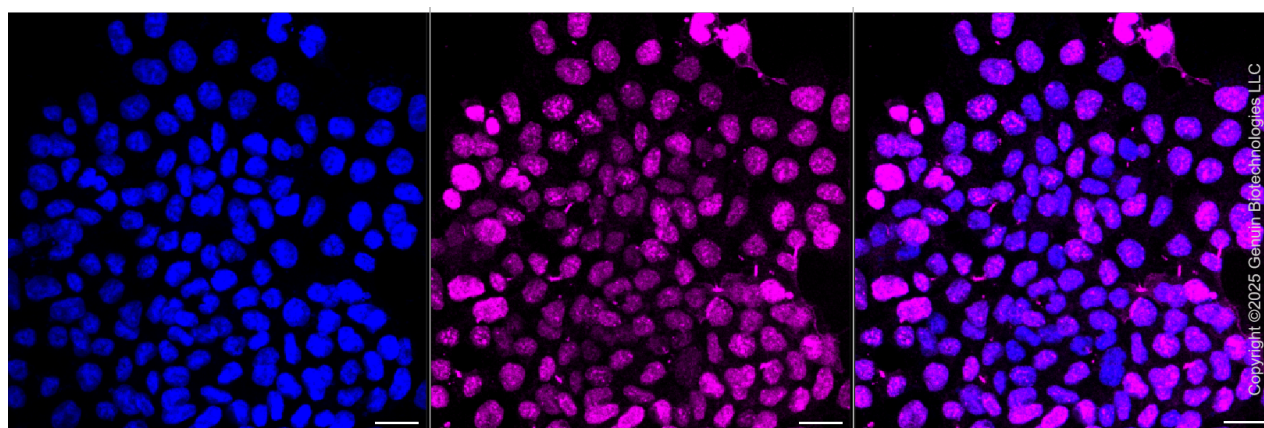
**Note:** This product is for research use only.

### Validation Data



### Aurora kinase B-Alexa Fluor® 647

Flow cytometric analysis of Aurora kinase B expression in HAP-1 cells using Aurora kinase B antibody (Cat#61330, 1:2,000). Green, isotype control; red, Aurora kinase B.



#### SUPPORT

SUPPORT@GENUINBIOTECH.COM  
TEL: +1-540-855-7041

#### ORDERS

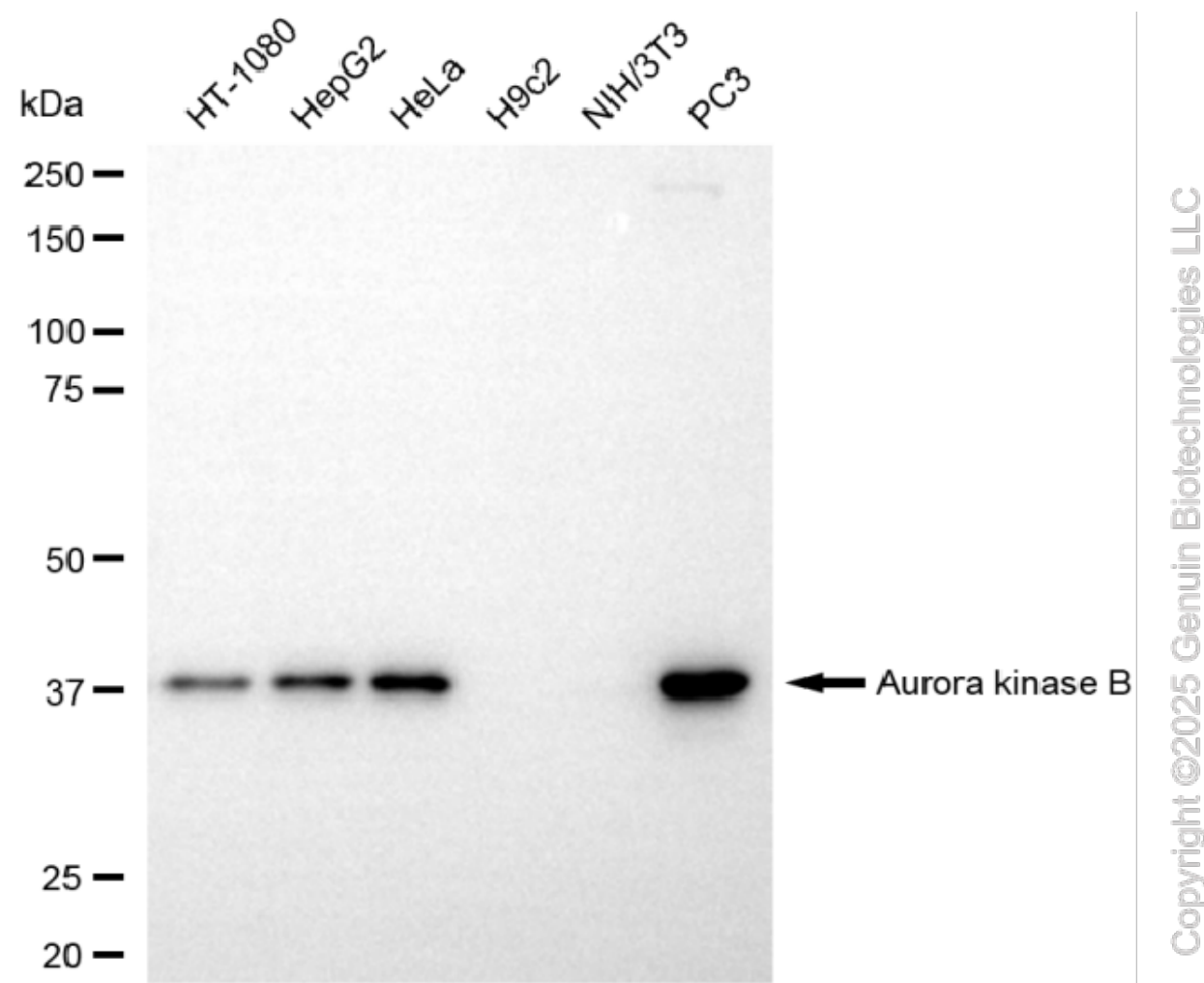
SALES@GENUINBIOTECH.COM  
FAX: +1-540-855-7041

WWW.GENUINBIOTECH.COM

## KD-Validated Anti-Aurora kinase B Recombinant Rabbit Monoclonal Antibody

PAGE 3

Immunocytochemical staining of HAP-1 cells with anti-Aurora kinase B antibody (Cat#61330, 1:1,000). Nuclei were stained blue with DAPI; Aurora kinase B was stained magenta with Alexa Fluor® 647. Images were taken using Leica stellaris 5. Protein abundance based on laser Intensity and smart gain: High. Scale bar, 20 µm.



Western blotting analysis using anti-aurora kinase B antibody (Cat#61330). Total cell lysates (30 µg) from various cell lines were loaded and separated by SDS-PAGE. The blot was incubated with anti-aurora kinase B antibody (Cat#61330, 1:5,000) and HRP-conjugated goat anti-rabbit secondary antibody (Cat#201, 1:20,000) respectively. Image was developed using NaQ™ ECL Substrate Kit (Cat#716).

### SUPPORT

SUPPORT@GENUINBIOTECH.COM  
TEL: +1-540-855-7041

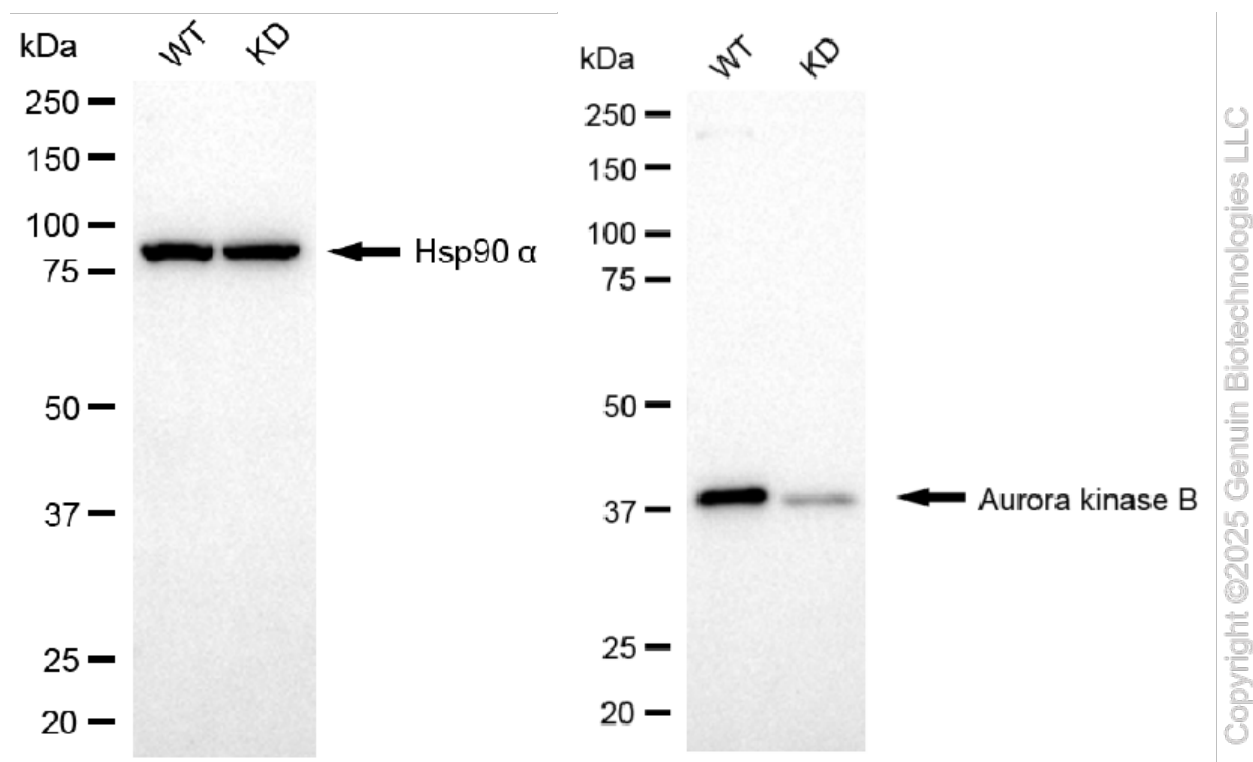
### ORDERS

SALES@GENUINBIOTECH.COM  
FAX: +1-540-855-7041

WWW.GENUINBIOTECH.COM

## KD-Validated Anti-Aurora kinase B Recombinant Rabbit Monoclonal Antibody

PAGE 4



Western blotting analysis using anti-aurora kinase B antibody (Cat#61330). Aurora kinase B expression in wild-type (WT) and aurora kinase B (AURKB) knockdown (KD) HT-1080 cells with 20 µg of total cell lysates. Hsp90 α serves as a loading control. The blot was incubated with anti-aurora kinase B antibody (Cat#61330, 1:5,000) and HRP-conjugated goat anti-rabbit secondary antibody (Cat#201, 1:20,000) respectively. Image was developed using NaQ™ ECL Substrate Kit (Cat#716).

### SUPPORT

SUPPORT@GENUINBIOTECH.COM  
TEL: +1-540-855-7041

### ORDERS

SALES@GENUINBIOTECH.COM  
FAX: +1-540-855-7041

[WWW.GENUINBIOTECH.COM](http://WWW.GENUINBIOTECH.COM)