

# KD-Validated Anti-BRMS1 Recombinant Rabbit Monoclonal Antibody



**Catalog #: 61332**

## Aliases

BRMS1; BRMS1 Transcriptional Repressor And Anoikis Regulator; Breast Cancer Metastasis Suppressor 1; Breast Cancer Metastasis-Suppressor 1; DKFZP564A063

## Background

Gene Name: BRMS1

NCBI Gene Entry: [25885](#)

UniProt Entry: [Q9HCU9](#)

## Application Information

Molecular Weight: Predicted, 28 kDa, observed, 28 kDa

Clonality: Rabbit monoclonal antibody

Clone ID: 23GB3015

Species Reactivity: Human

Applications Tested: Western blotting (WB), flow cytometry (FCM), immunocytochemistry (IC)

## Immunogen

A synthesized peptide derived from BRMS1

## Isotype

Rabbit IgG

## Storage Buffer

Supplied in PBS (pH 7.4) containing 50% glycerol, and 0.02% sodium azide.

## Storage

Store at -20 °C for one year.

## Recommended Dilutions

Western Blotting (WB): 1:1,000-1:5,000

Flow Cytometry (FCM): 1:2,000

Immunocytochemistry (IC): 1:100-1:1,000

**Note:** This product is for research use only.

## Validation Data

---

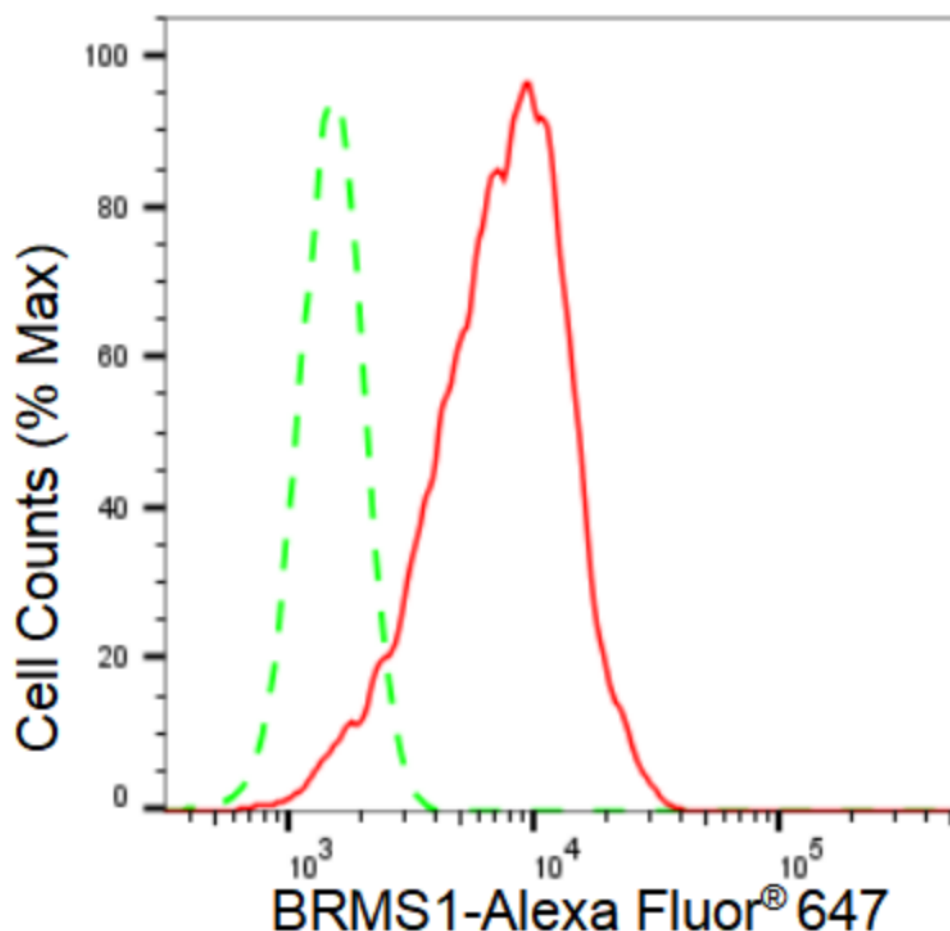
### SUPPORT

SUPPORT@GENUINBIOTECH.COM  
TEL: +1-540-855-7041

### ORDERS

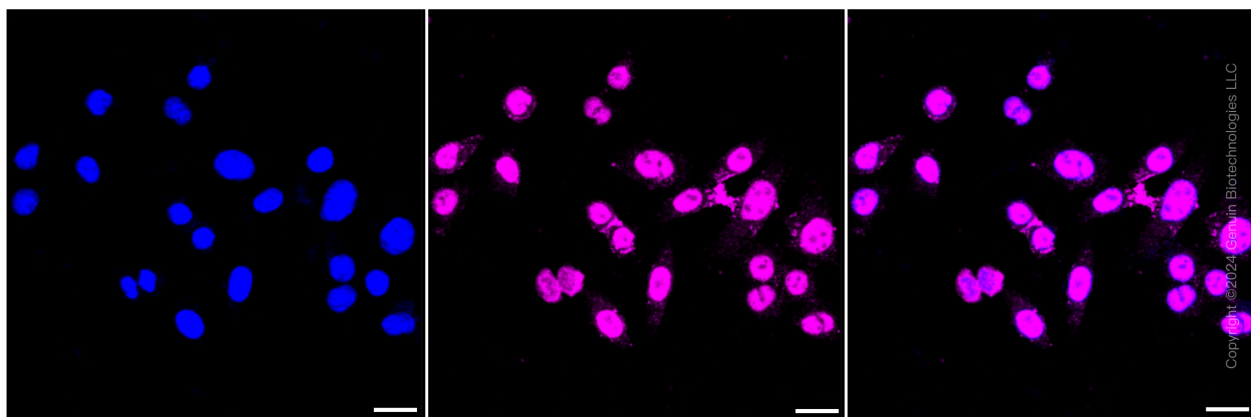
SALES@GENUINBIOTECH.COM  
FAX: +1-540-855-7041

[WWW.GENUINBIOTECH.COM](http://WWW.GENUINBIOTECH.COM)



Copyright ©2024 Genuin Biotechnologies LLC

Flow cytometric analysis of BRMS1 expression in HepG2 cells using BRMS1 antibody (Cat#61332, 1:2,000). Green, isotype control; red, BRMS1.



Copyright ©2024 Genuin Biotechnologies LLC

Immunocytochemical staining of HepG2 cells with BRMS1 antibody (Cat#61332, 1:1,000). Nuclei were stained blue with DAPI; BRMS1 was stained magenta with Alexa Fluor® 647. Images were taken using Leica stellaris 5. Protein abundance based on laser Intensity and smart gain: Medium. Scale bar: 20  $\mu$ m.

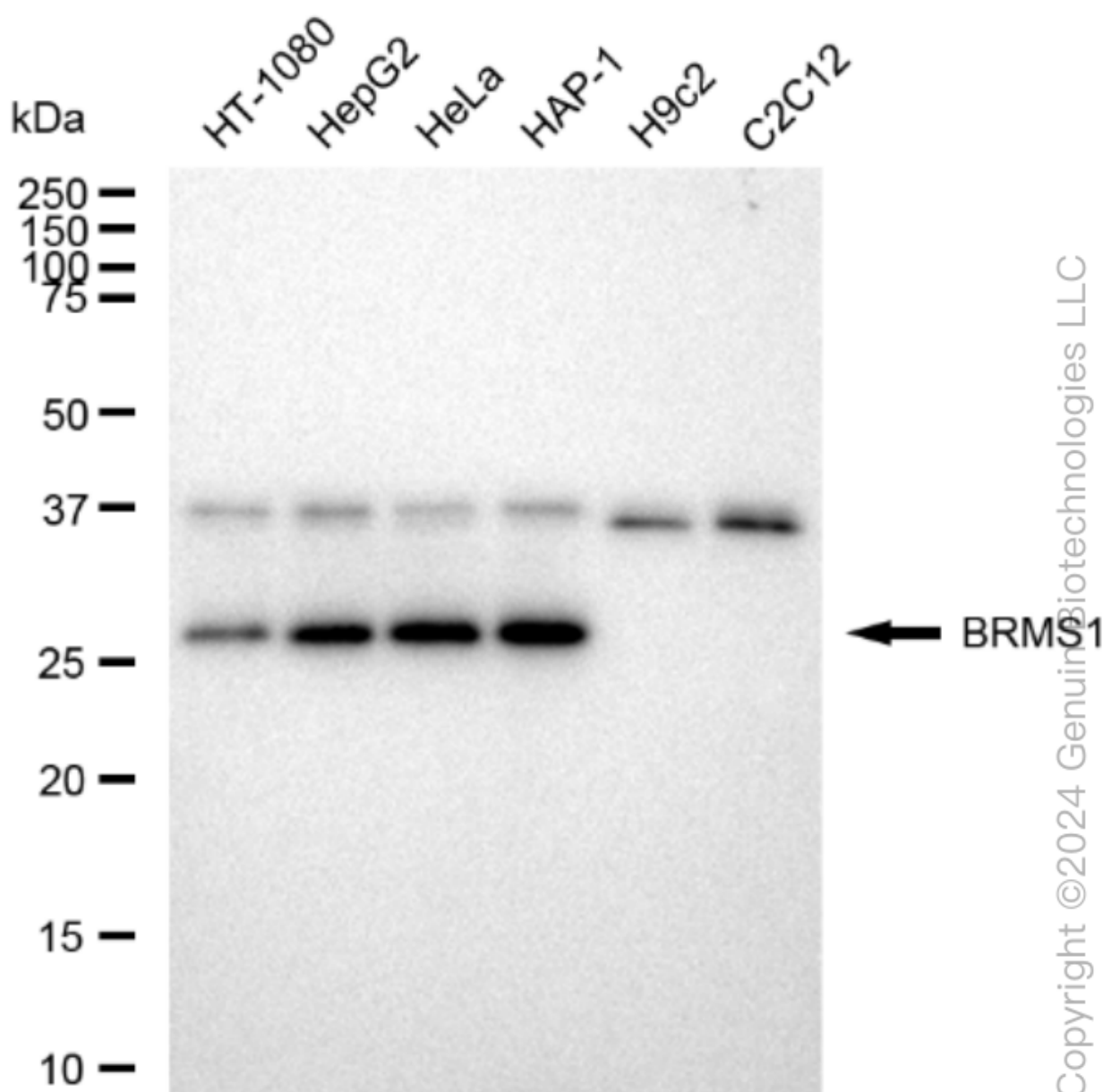
**SUPPORT**

SUPPORT@GENUINBIOTECH.COM  
TEL: +1-540-855-7041

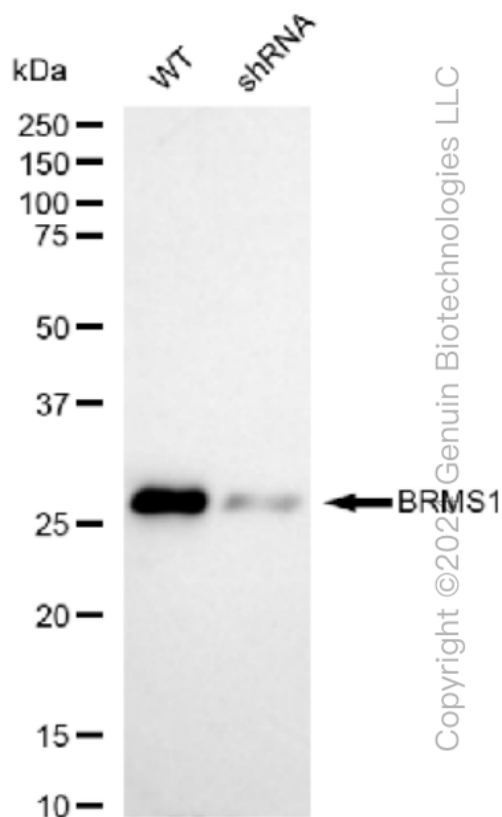
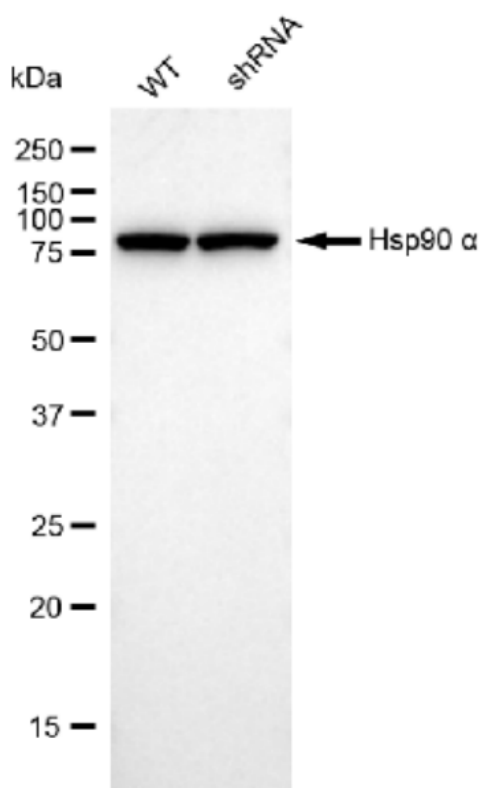
**ORDERS**

SALES@GENUINBIOTECH.COM  
FAX: +1-540-855-7041

**WWW.GENUINBIOTECH.COM**

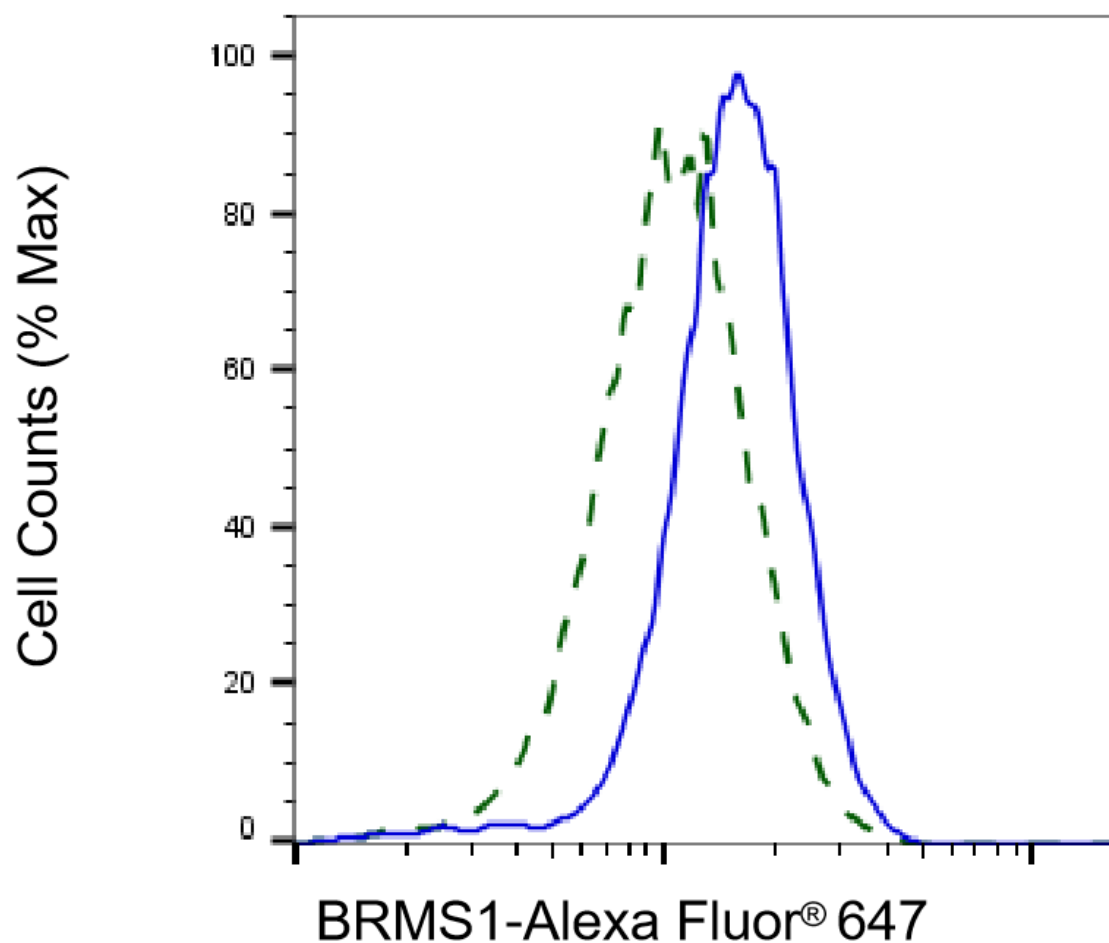


Western blotting analysis using anti-BRMS1 antibody (Cat#61332). Total cell lysates (30 µg) from various cell lines were loaded and separated by SDS-PAGE. The blot was incubated with anti-BRMS1 antibody (Cat#61332, 1:5,000) and HRP-conjugated goat anti-rabbit secondary antibody (Cat#201, 1:20,000) respectively. Image was developed using FeQ™ ECL Substrate Kit (Cat#226).



Copyright © 2022 Genuin Biotechnologies LLC

Western blotting analysis using anti-BRMS1 antibody (Cat#61332). BRMS1 expression in wild type (WT) and BRMS1 shRNA knockdown (KD) HeLa cells with 30 µg of total cell lysates. β-Tubulin serves as a loading control. The blot was incubated with anti-BRMS1 antibody (Cat#61332, 1:5,000) and HRP-conjugated goat anti-rabbit secondary antibody (Cat#201, 1:20,000) respectively. Image was developed using FeQ™ ECL Substrate Kit (Cat#226).



Copyright ©2025 Genuin Biotechnologies LLC

Validation of BRMS1 knockdown using flow cytometry. Wild-type(WT, Blue) and knockdown(KD, Green) HeLa cells were stained with anti-BRMS1 antibody (Cat#61332, 1:2,000) and analyzed using BD flow cytometer.