

KD-Validated Anti-Coenzyme A synthase Recombinant Rabbit Monoclonal Antibody



Catalog #: 61334

Aliases

COASY; Coenzyme A Synthase; NBP; Bifunctional Coenzyme A Synthase; CoA Synthase; DPCCK; PPAT; POV-2; Bifunctional Phosphopantetheine Adenylyl Transferase/Dephospho CoA Kinase; Phosphopantetheine Adenylyltransferase / Dephosphocoenzyme A Kinase; Nucleotide Binding Protein; NBIA6; PCH12; UKR1

Background

Gene Name: COASY

NCBI Gene Entry: [80347](#)

UniProt Entry: [Q13057](#)

Application Information

Molecular Weight: Predicted, 62 kDa, observed, 62 kDa

Clonality: Rabbit monoclonal antibody

Clone ID: 23GB3095

Species Reactivity: Human

Applications Tested: Western blotting (WB), flow cytometry (FCM), immunocytochemistry (IC)

Immunogen

A synthesized peptide derived from COASY

Isotype

Rabbit IgG

Storage Buffer

Supplied in PBS (pH 7.4) containing 50% glycerol, and 0.02% sodium azide.

Storage

Store at -20 °C for one year.

Recommended Dilutions

Western Blotting (WB): 1:1,000-1:5,000

Flow Cytometry (FCM): 1:2,000

Immunocytochemistry (IC): 1:100-1:1,000

SUPPORT

SUPPORT@GENUINBIOTECH.COM
TEL: +1-540-855-7041

ORDERS

SALES@GENUINBIOTECH.COM
FAX: +1-540-855-7041

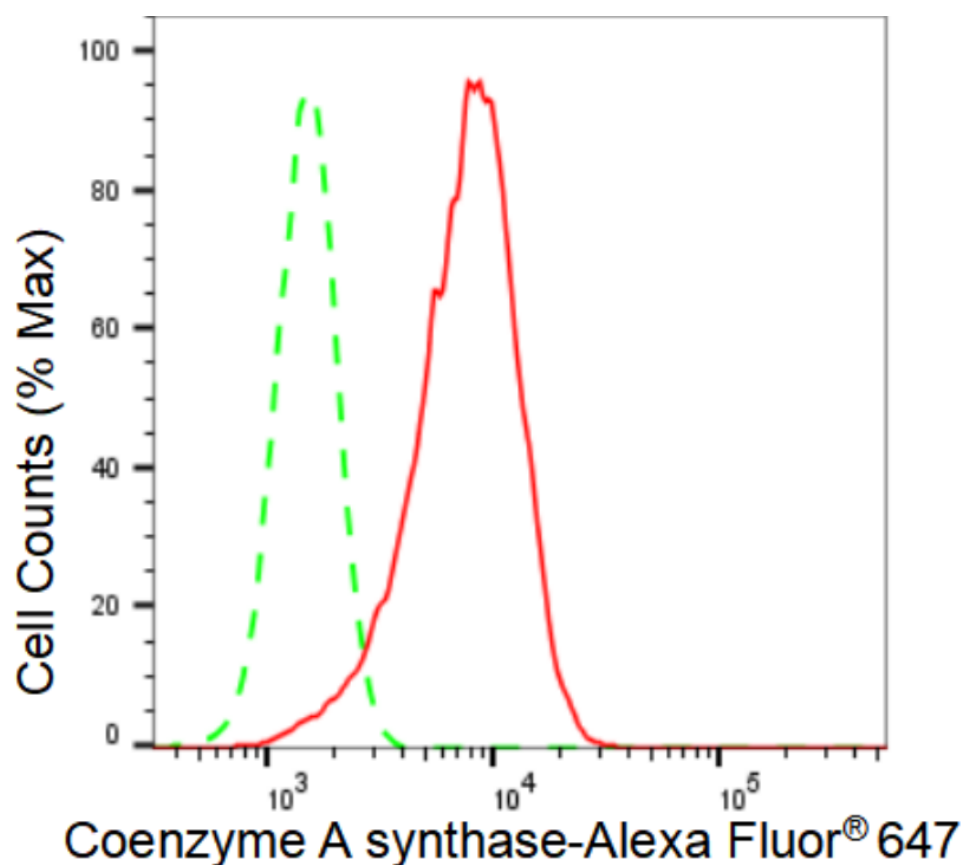
WWW.GENUINBIOTECH.COM

KD-Validated Anti-Coenzyme A synthase Recombinant Rabbit Monoclonal Antibody

PAGE 2

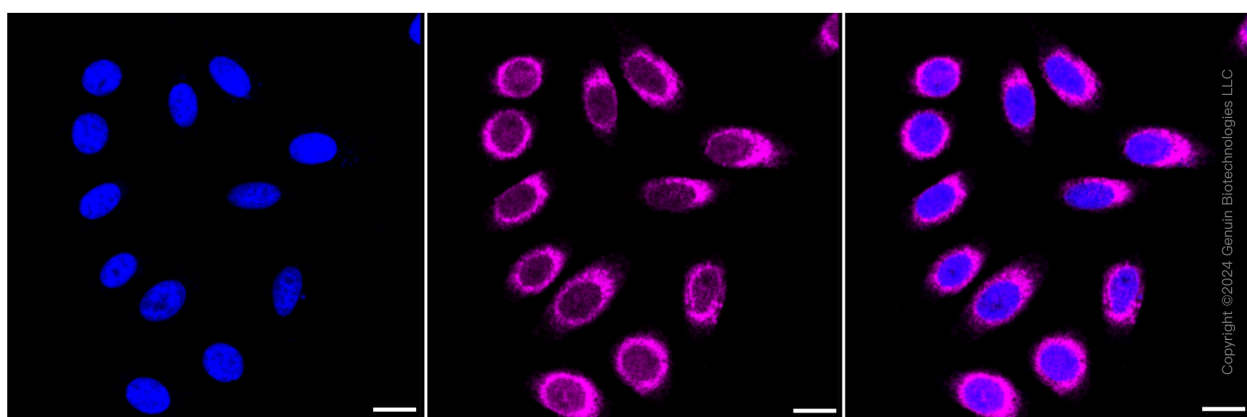
Note: This product is for research use only.

Validation Data



Copyright ©2024 Genuin Biotechnologies LLC

Flow cytometric analysis of Coenzyme A synthase expression in HepG2 cells using Coenzyme A synthase antibody (Cat#61334, 1:2,000). Green, isotype control; red, Coenzyme A synthase.



Copyright ©2024 Genuin Biotechnologies LLC

SUPPORT

SUPPORT@GENUINBIOTECH.COM
TEL: +1-540-855-7041

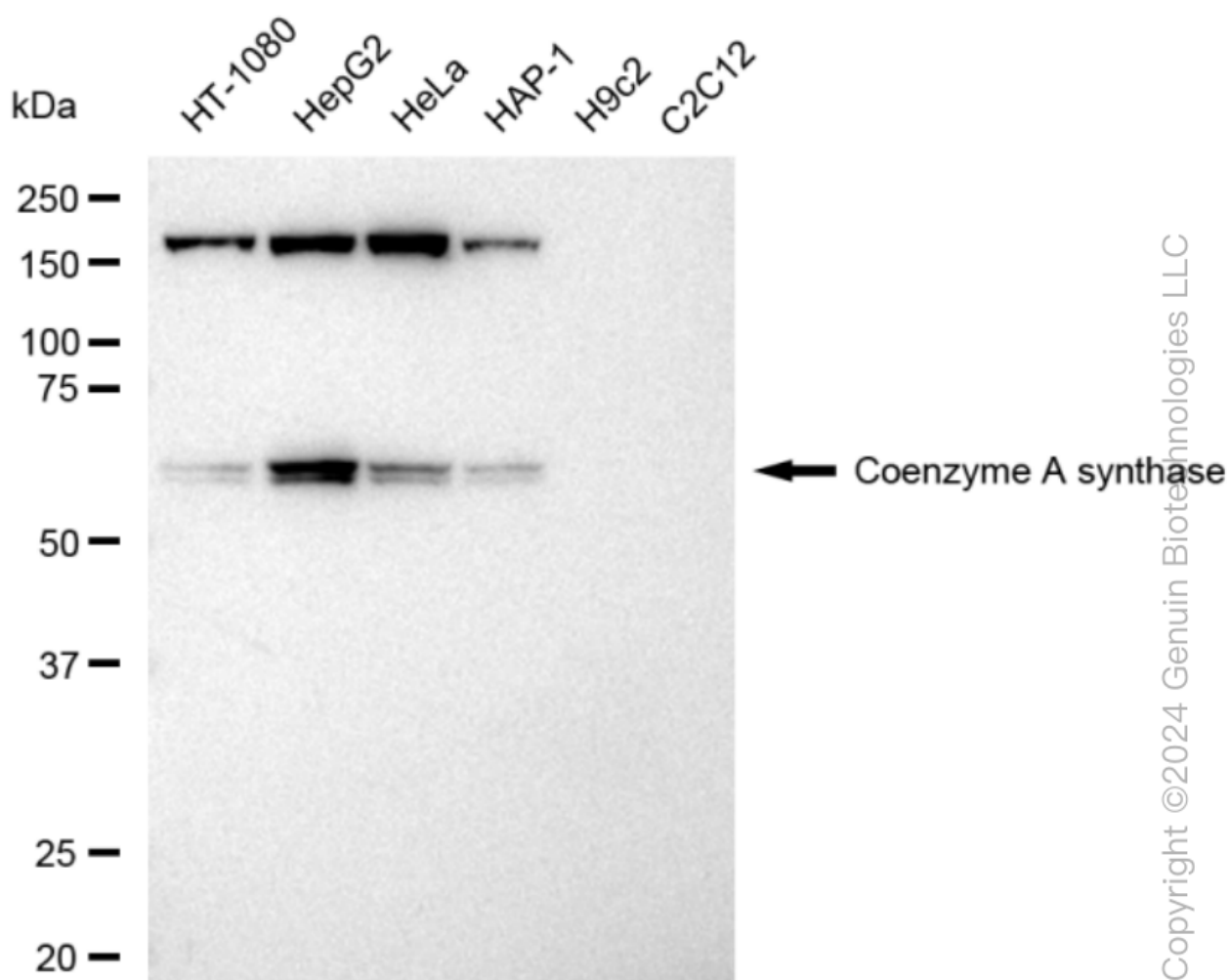
ORDERS

SALES@GENUINBIOTECH.COM
FAX: +1-540-855-7041

WWW.GENUINBIOTECH.COM

KD-Validated Anti-Coenzyme A synthase Recombinant Rabbit Monoclonal Antibody

PAGE 3



Western blotting analysis using anti-Coenzyme A synthase antibody (Cat#61334). Total cell lysates (30 µg) from various cell lines were loaded and separated by SDS-PAGE. The blot was incubated with anti-Coenzyme A synthase antibody (Cat#61334, 1:5,000) and HRP-conjugated goat anti-rabbit secondary antibody (Cat#201, 1:20,000) respectively. Image was developed using FeQ™ ECL Substrate Kit (Cat#226).

SUPPORT

SUPPORT@GENUINBIOTECH.COM
TEL: +1-540-855-7041

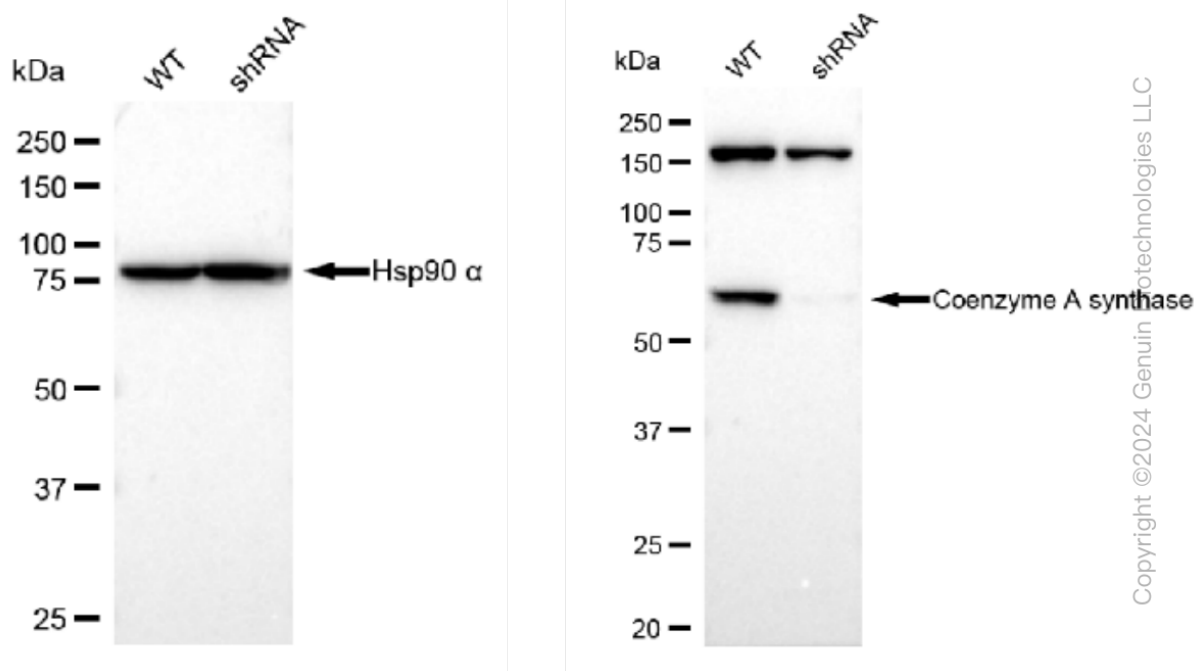
ORDERS

SALES@GENUINBIOTECH.COM
FAX: +1-540-855-7041

WWW.GENUINBIOTECH.COM

KD-Validated Anti-Coenzyme A synthase Recombinant Rabbit Monoclonal Antibody

PAGE 4



Copyright ©2024 Genuin Biotechnologies LLC

Western blotting analysis using anti-Coenzyme A synthase antibody (Cat#61334). Coenzyme A synthase expression in wild type (WT) and Coenzyme A synthase shRNA knockdown (KD) HeLa cells with 30 μ g of total cell lysates. Hsp90 α serves as a loading control. The blot was incubated with anti-Coenzyme A synthase antibody (Cat#61334, 1:5,000) and HRP-conjugated goat anti-rabbit secondary antibody (Cat#201, 1:20,000) respectively. Image was developed using FeQ™ ECL Substrate Kit (Cat#226).

SUPPORT

SUPPORT@GENUINBIOTECH.COM
TEL: +1-540-855-7041

ORDERS

SALES@GENUINBIOTECH.COM
FAX: +1-540-855-7041

WWW.GENUINBIOTECH.COM