

# KD-Validated Anti-CLPTM1 Recombinant Rabbit Monoclonal Antibody



**Catalog #: 61337**

## Aliases

CLPTM1; CLPTM1 Regulator Of GABA Type A Receptor Forward Trafficking; Cleft Lip And Palate Associated Transmembrane Protein 1; Cleft Lip And Palate Transmembrane Protein 1; Putative Lipid Scramblase CLPTM1; CLPTM1, Transmembrane Protein

## Background

Gene Name: CLPTM1

NCBI Gene Entry: [1209](#)

UniProt Entry: [O96005](#)

## Application Information

Molecular Weight: Predicted, 76 kDa, observed, 90 kDa

Clonality: Rabbit monoclonal antibody

Clone ID: 23GB3090

Species Reactivity: Human, mouse, rat

Applications Tested: Western blotting (WB), flow cytometry (FCM), immunocytochemistry (IC)

## Immunogen

A synthesized peptide derived from CLPTM1

## Isotype

Rabbit IgG

## Storage Buffer

Supplied in PBS (pH 7.4) containing 50% glycerol, and 0.02% sodium azide.

## Storage

Store at -20 °C for one year.

## Recommended Dilutions

Western Blotting (WB): 1:1,000-1:5,000

Flow Cytometry (FCM): 1:2,000

Immunocytochemistry (IC): 1:100-1:1,000

**Note:** This product is for research use only.

---

### SUPPORT

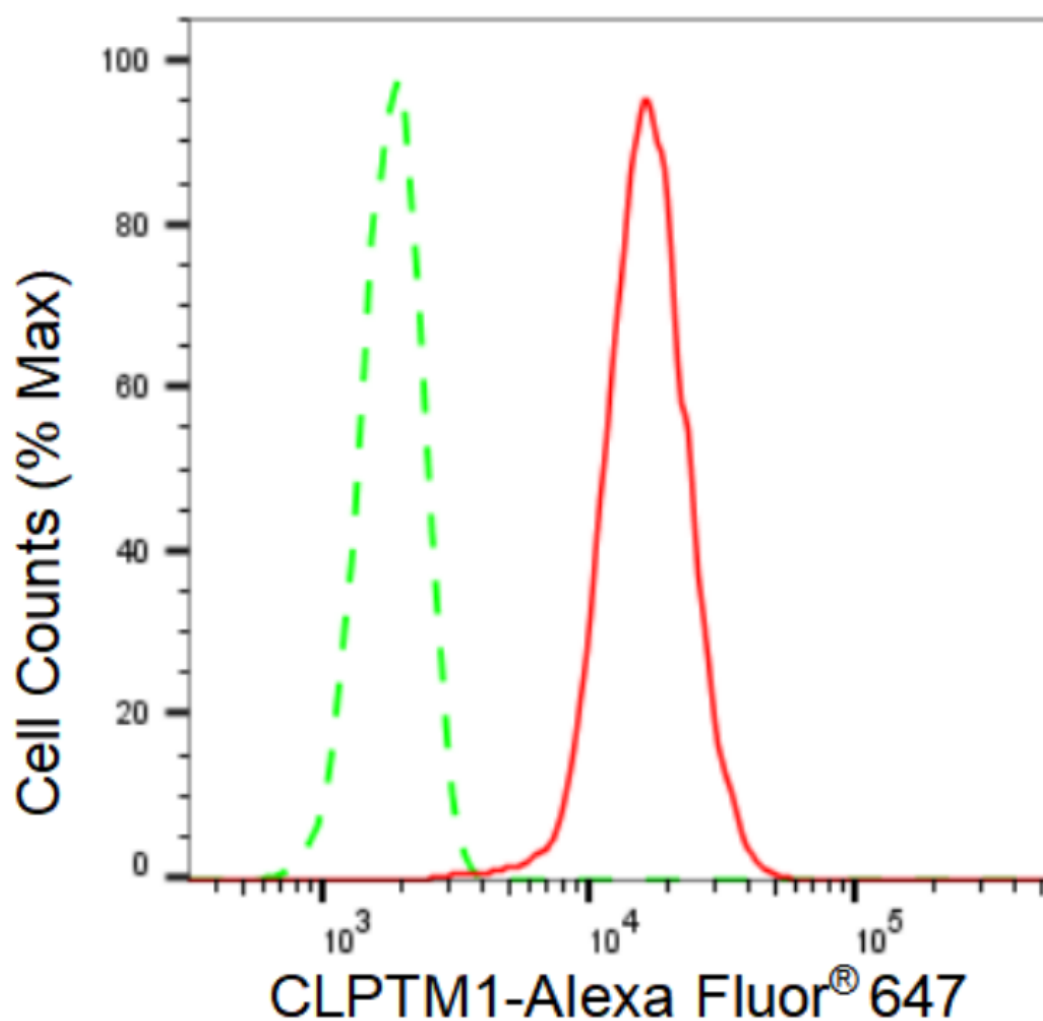
SUPPORT@GENUINBIOTECH.COM  
TEL: +1-540-855-7041

### ORDERS

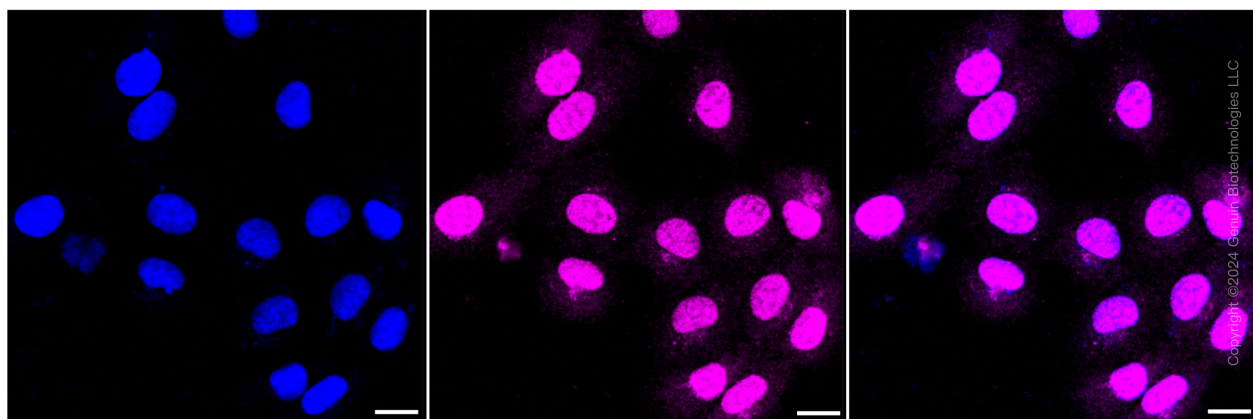
SALES@GENUINBIOTECH.COM  
FAX: +1-540-855-7041

[WWW.GENUINBIOTECH.COM](http://WWW.GENUINBIOTECH.COM)

**Validation Data**



Flow cytometric analysis of CLPTM1 expression in HT-1080 cells using CLPTM1 antibody (Cat#61337, 1:2,000). Green, isotype control; red, CLPTM1.



Immunocytochemical staining of HT-1080 cells with CLPTM1 antibody (Cat#61337, 1:1,000).

**SUPPORT**

SUPPORT@GENUINBIOTECH.COM  
TEL: +1-540-855-7041

**ORDERS**

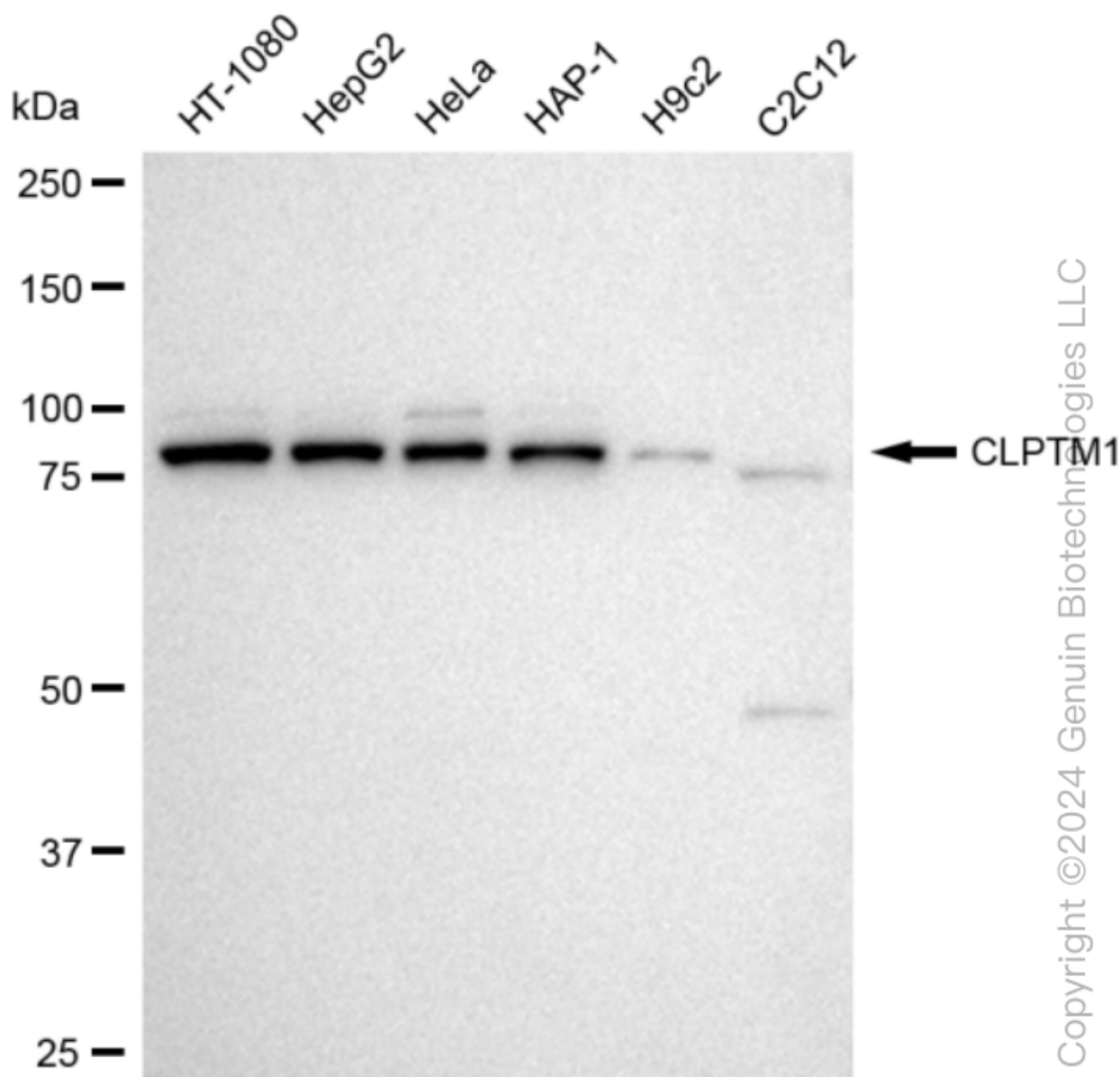
SALES@GENUINBIOTECH.COM  
FAX: +1-540-855-7041

**WWW.GENUINBIOTECH.COM**

## KD-Validated Anti-CLPTM1 Recombinant Rabbit Monoclonal Antibody

PAGE 3

Nuclei were stained blue with DAPI; CLPTM1 was stained magenta with Alexa Fluor® 647. Images were taken using Leica stellaris 5. Protein abundance based on laser Intensity and smart gain: Medium. Scale bar: 20  $\mu$ m.



Western blotting analysis using anti-CLPTM1 antibody (Cat#61337). Total cell lysates (30  $\mu$ g) from various cell lines were loaded and separated by SDS-PAGE. The blot was incubated with anti-CLPTM1 antibody (Cat#61337, 1:5,000) and HRP-conjugated goat anti-rabbit secondary antibody (Cat#201, 1:20,000) respectively. Image was developed using FeQ™ ECL Substrate Kit (Cat#226).

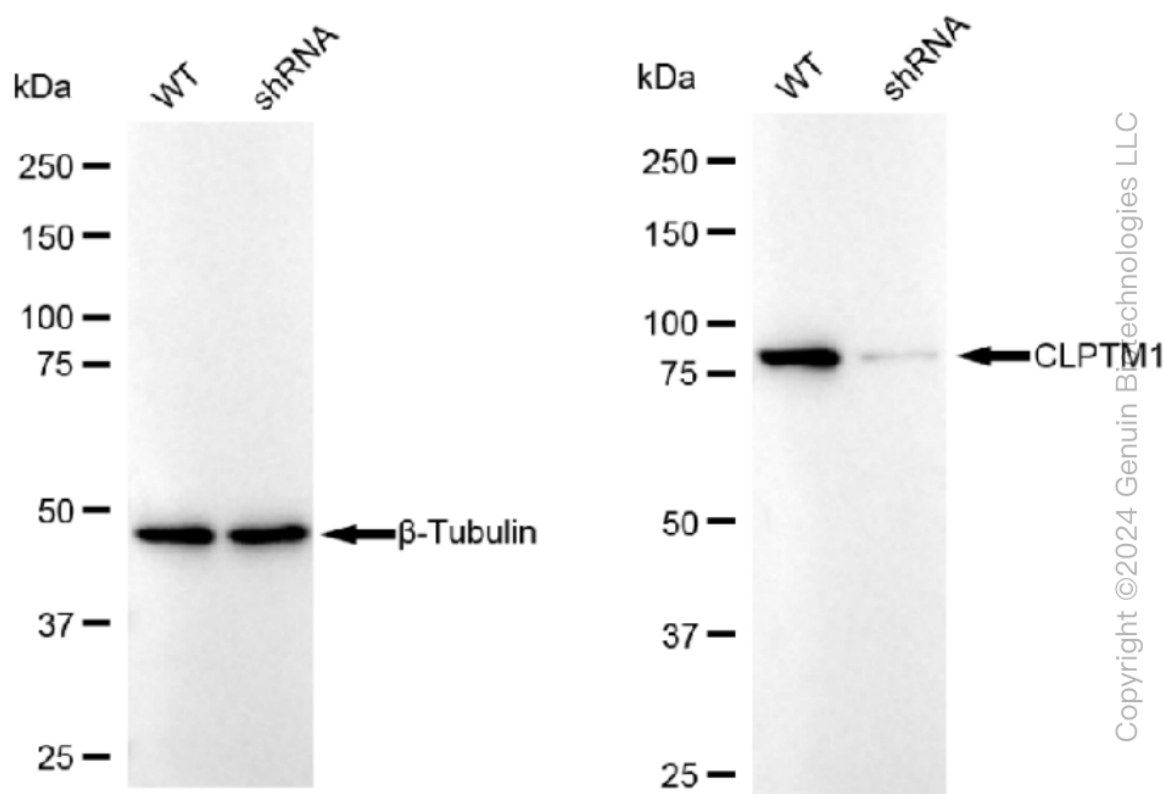
### SUPPORT

SUPPORT@GENUINBIOTECH.COM  
TEL: +1-540-855-7041

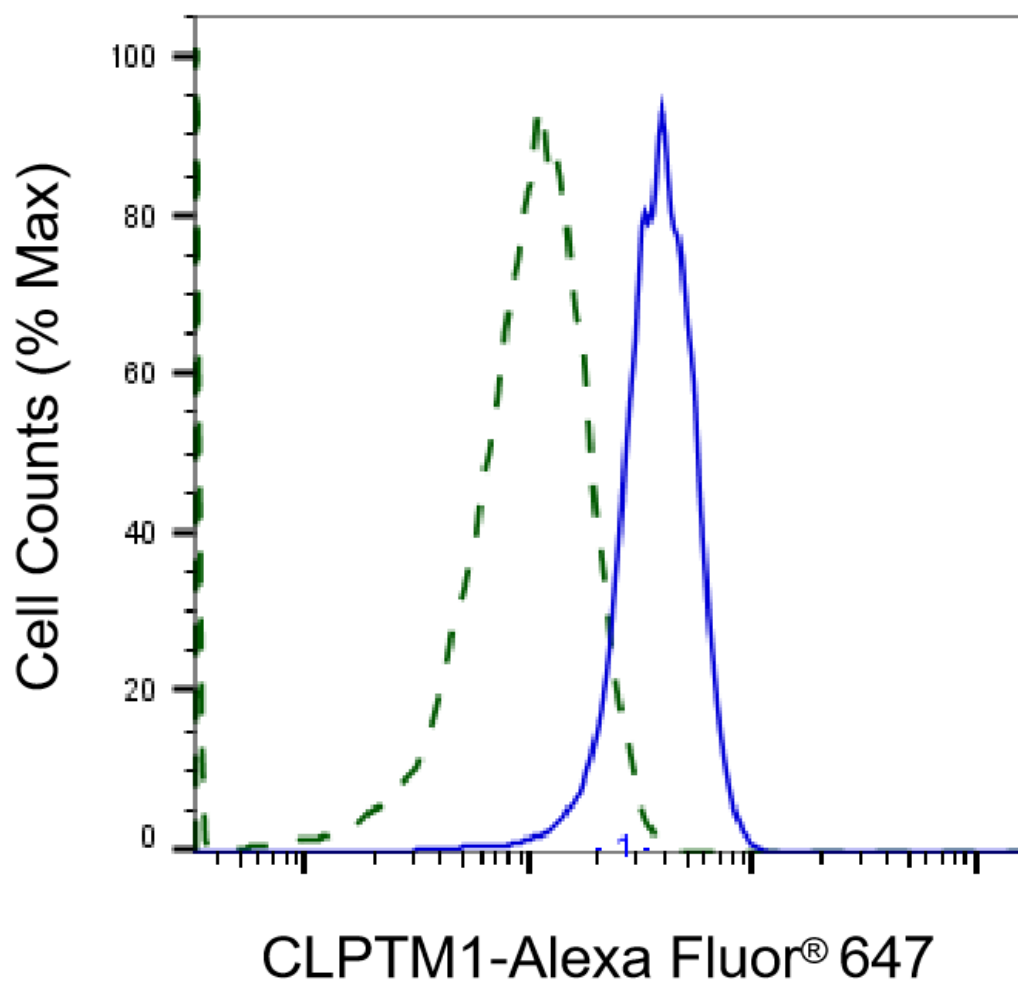
### ORDERS

SALES@GENUINBIOTECH.COM  
FAX: +1-540-855-7041

WWW.GENUINBIOTECH.COM



Western blotting analysis using anti-CLPTM1 antibody (Cat#61337). CLPTM1 expression in wild type (WT) and CLPTM1 shRNA knockdown (KD) HeLa cells with 30  $\mu$ g of total cell lysates.  $\beta$ -Tubulin serves as a loading control. The blot was incubated with anti-CLPTM1 antibody (Cat#61337, 1:5,000) and HRP-conjugated goat anti-rabbit secondary antibody (Cat#201, 1:20,000) respectively. Image was developed using FeQ™ ECL Substrate Kit (Cat#226).



Validation of CLPTM1 knockdown using flow cytometry. Wild-type(WT, Blue) and knockdown(KD, Green) HeLa cells were stained with anti-CLPTM1 antibody (Cat#61337, 1:2,000) and analyzed using BD flow cytometer.