

# KD-Validated Anti-BAG1 Recombinant Rabbit Monoclonal Antibody



**Catalog #: 61340**

## Aliases

BAG1; BAG Cochaperone 1; BAG Family Molecular Chaperone Regulator 1; BCL2 Associated Athanogene 1; BAG-1; HAP; Glucocortoid Receptor-Associated Protein RAP46; Bcl-2 Associating Athanogene-1 Protein; Receptor-Associated Protein, 46-K; Bcl-2-Associated Athanogene 1; BCL2 Associated Athanogene; BCL2-Associated Athanogene; Bcl-2-Binding Protein; RAP46

## Background

Gene Name: BAG1

NCBI Gene Entry: [573](#)

UniProt Entry: [Q99933](#)

## Application Information

Molecular Weight: Predicted, 39 kDa, observed, 33, 46,50 kDa

Clonality: Rabbit monoclonal antibody

Clone ID: 23GB2995

Species Reactivity: Human, mouse, rat

Applications Tested: Western blotting (WB), flow cytometry (FCM), immunocytochemistry (IC)

## Immunogen

A synthesized peptide derived from Bag1

## Isotype

Rabbit IgG

## Storage Buffer

Supplied in PBS (pH 7.4) containing 50% glycerol, and 0.02% sodium azide.

## Storage

Store at -20 °C for one year.

## Recommended Dilutions

Western Blotting (WB): 1:1,000-1:5,000

Flow Cytometry (FCM): 1:2,000

Immunocytochemistry (IC): 1:100-1:1,000

---

### SUPPORT

SUPPORT@GENUINBIOTECH.COM  
TEL: +1-540-855-7041

### ORDERS

SALES@GENUINBIOTECH.COM  
FAX: +1-540-855-7041

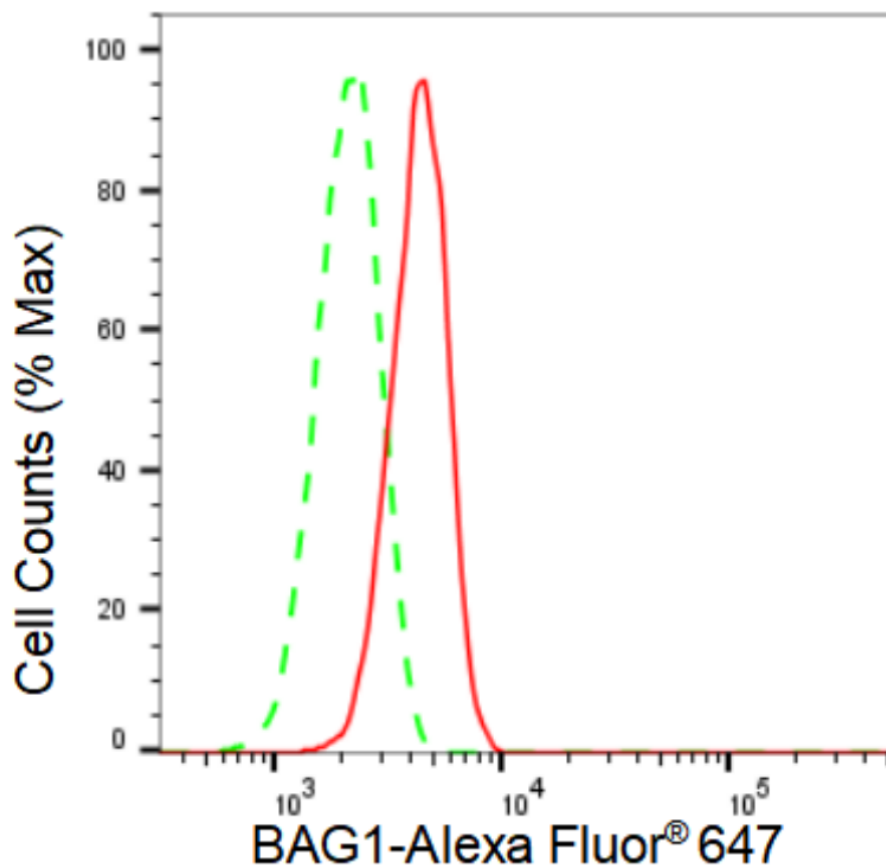
[WWW.GENUINBIOTECH.COM](http://WWW.GENUINBIOTECH.COM)

# KD-Validated Anti-BAG1 Recombinant Rabbit Monoclonal Antibody

PAGE 2

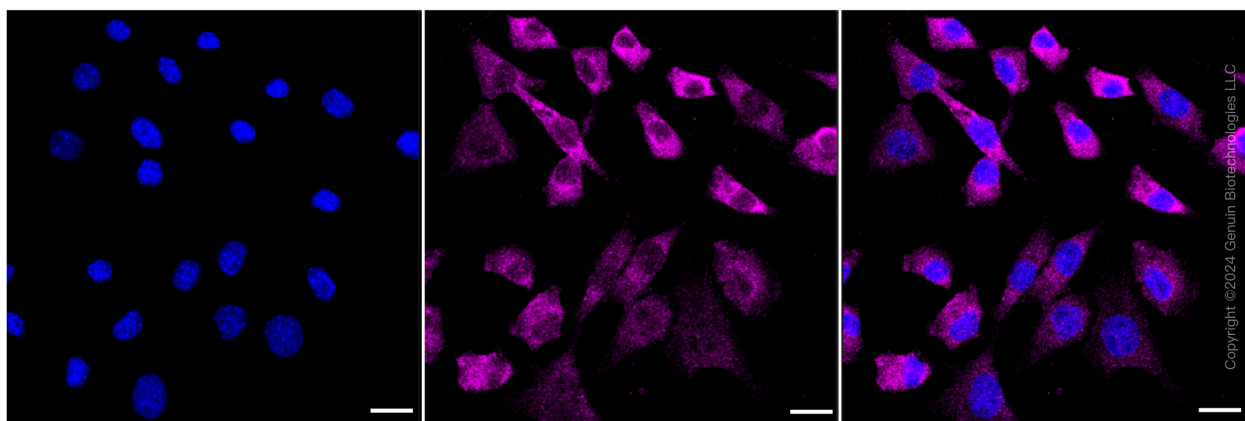
**Note:** This product is for research use only.

## Validation Data



Copyright ©2024 Genuin Biotechnologies LLC

Flow cytometric analysis of BAG1 expression in C2C12 cells using BAG1 antibody (Cat#61340, 1:2,000). Green, isotype control; red, BAG1.



Copyright ©2024 Genuin Biotechnologies LLC

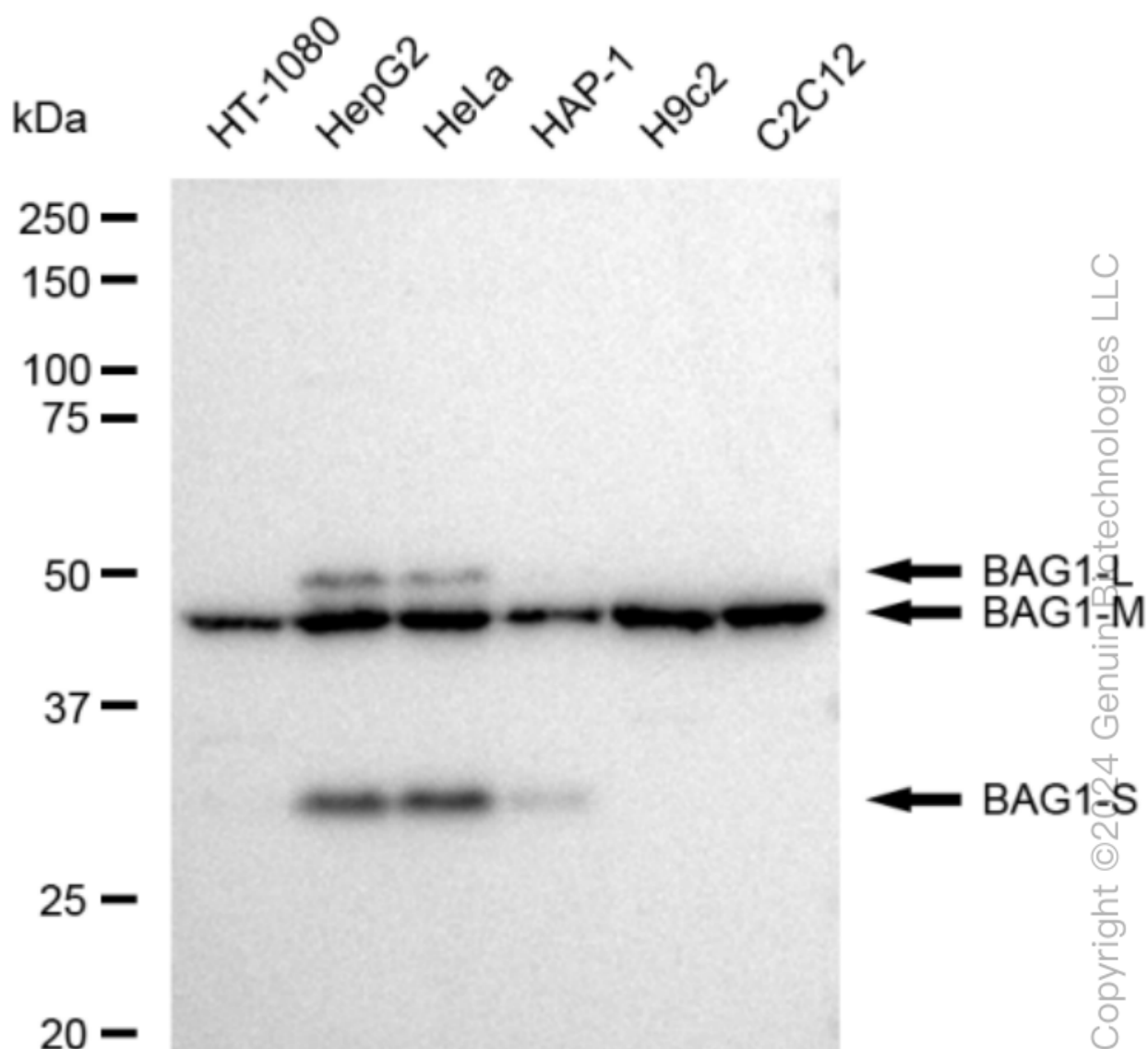
### SUPPORT

SUPPORT@GENUINBIOTECH.COM  
TEL: +1-540-855-7041

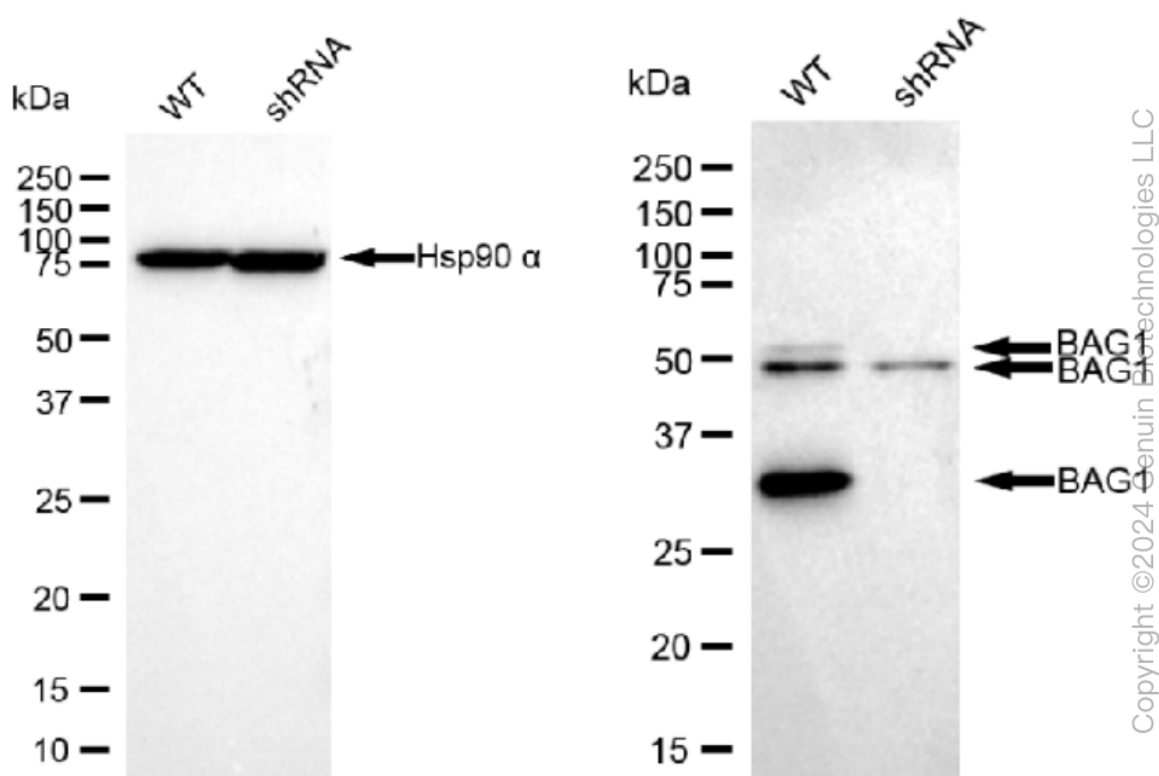
### ORDERS

SALES@GENUINBIOTECH.COM  
FAX: +1-540-855-7041

[WWW.GENUINBIOTECH.COM](http://WWW.GENUINBIOTECH.COM)



Western blotting analysis using anti-BAG1 antibody (Cat#61340). Total cell lysates (30  $\mu$ g) from various cell lines were loaded and separated by SDS-PAGE. The blot was incubated with anti-BAG1 antibody (Cat#61340, 1:5,000) and HRP-conjugated goat anti-rabbit secondary antibody (Cat#201, 1:20,000) respectively. Image was developed using FeQ™ ECL Substrate Kit (Cat#226).



Western blotting analysis using anti-BAG1 antibody (Cat#61340). BAG1 expression in wild type (WT) and BAG1 shRNA knockdown (KD) HeLa cells with 30 µg of total cell lysates. Hsp90 α serves as a loading control. The blot was incubated with anti-BAG1 antibody (Cat#61340, 1:5,000) and HRP-conjugated goat anti-rabbit secondary antibody (Cat#201, 1:20,000) respectively. Image was developed using FeQ™ ECL Substrate Kit (Cat#226).