

KD-Validated Anti-CLIP1 Recombinant Rabbit Monoclonal Antibody



Catalog #: 61343

Aliases

CLIP1; CAP-Gly Domain Containing Linker Protein 1; CLIP-170; CYLN1; CLIP170; CLIP; RSN; Restin (Reed-Steinberg Cell-Expressed Intermediate Filament-Associated Protein); CAP-Gly Domain-Containing Linker Protein 1; Cytoplasmic Linker Protein 170 Alpha-2; Cytoplasmic Linker Protein 1; Restin; Reed-Sternberg Intermediate Filament-Associated Protein; Cytoplasmic Linker Protein CLIP-170

Background

Gene Name: CLIP1

NCBI Gene Entry: [6249](#)

UniProt Entry: [P30622](#)

Application Information

Molecular Weight: Predicted, 162 kDa, observed, 170 kDa

Clonality: Rabbit monoclonal antibody

Clone ID: 23GB3080

Species Reactivity: Human, mouse

Applications Tested: Western blotting (WB), flow cytometry (FCM), immunocytochemistry (IC)

Immunogen

A synthesized peptide derived from CLIP170

Isotype

Rabbit IgG

Storage Buffer

Supplied in PBS (pH 7.4) containing 50% glycerol, and 0.02% sodium azide.

Storage

Store at -20 °C for one year.

Recommended Dilutions

Western Blotting (WB): 1:1,000-1:5,000

Flow Cytometry (FCM): 1:2,000

Immunocytochemistry (IC): 1:100-1:1,000

SUPPORT

SUPPORT@GENUINBIOTECH.COM
TEL: +1-540-855-7041

ORDERS

SALES@GENUINBIOTECH.COM
FAX: +1-540-855-7041

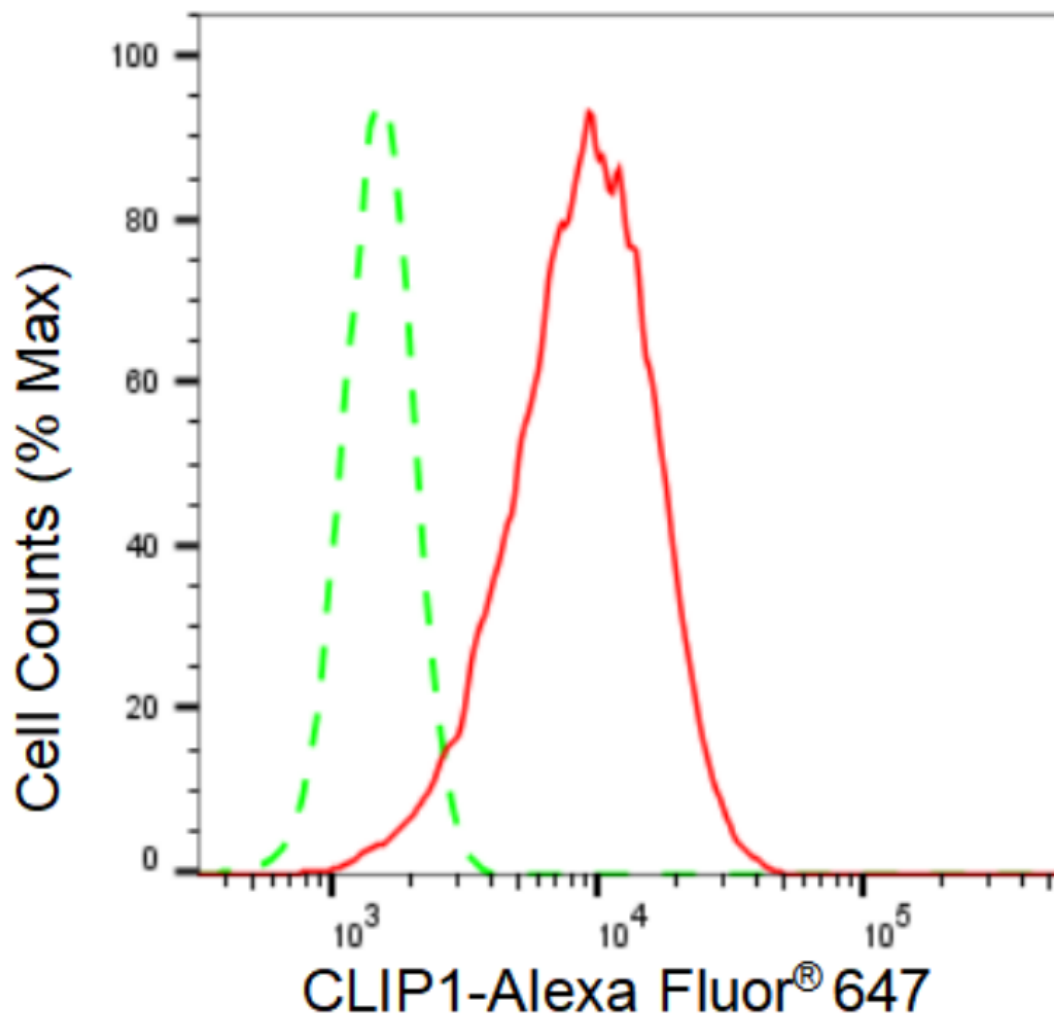
WWW.GENUINBIOTECH.COM

KD-Validated Anti-CLIP1 Recombinant Rabbit Monoclonal Antibody

PAGE 2

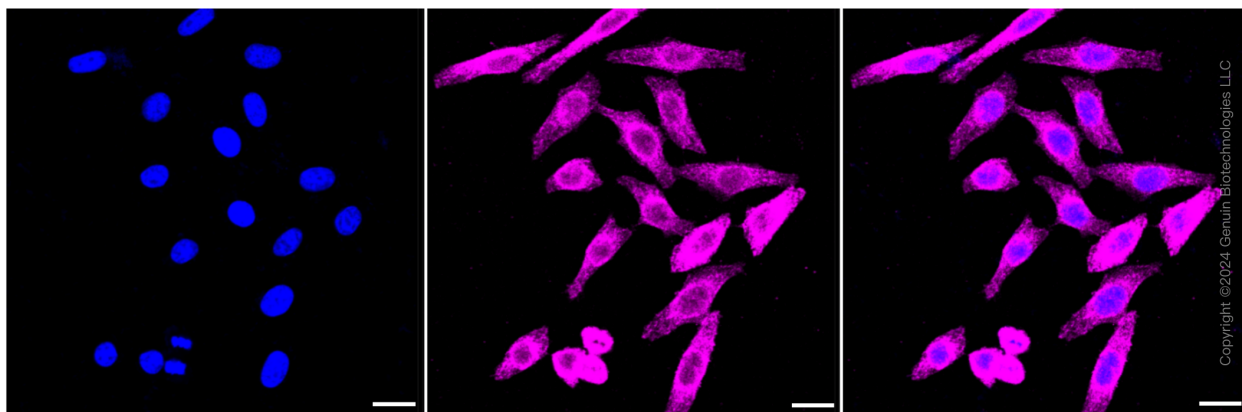
Note: This product is for research use only.

Validation Data



Copyright ©2024 Genuin Biotechnologies LLC

Flow cytometric analysis of CLIP1 expression in HepG2 cells using CLIP1 antibody (Cat#61343, 1:2,000). Green, isotype control; red, CLIP1.



Copyright ©2024 Genuin Biotechnologies LLC

SUPPORT

SUPPORT@GENUINBIOTECH.COM
TEL: +1-540-855-7041

ORDERS

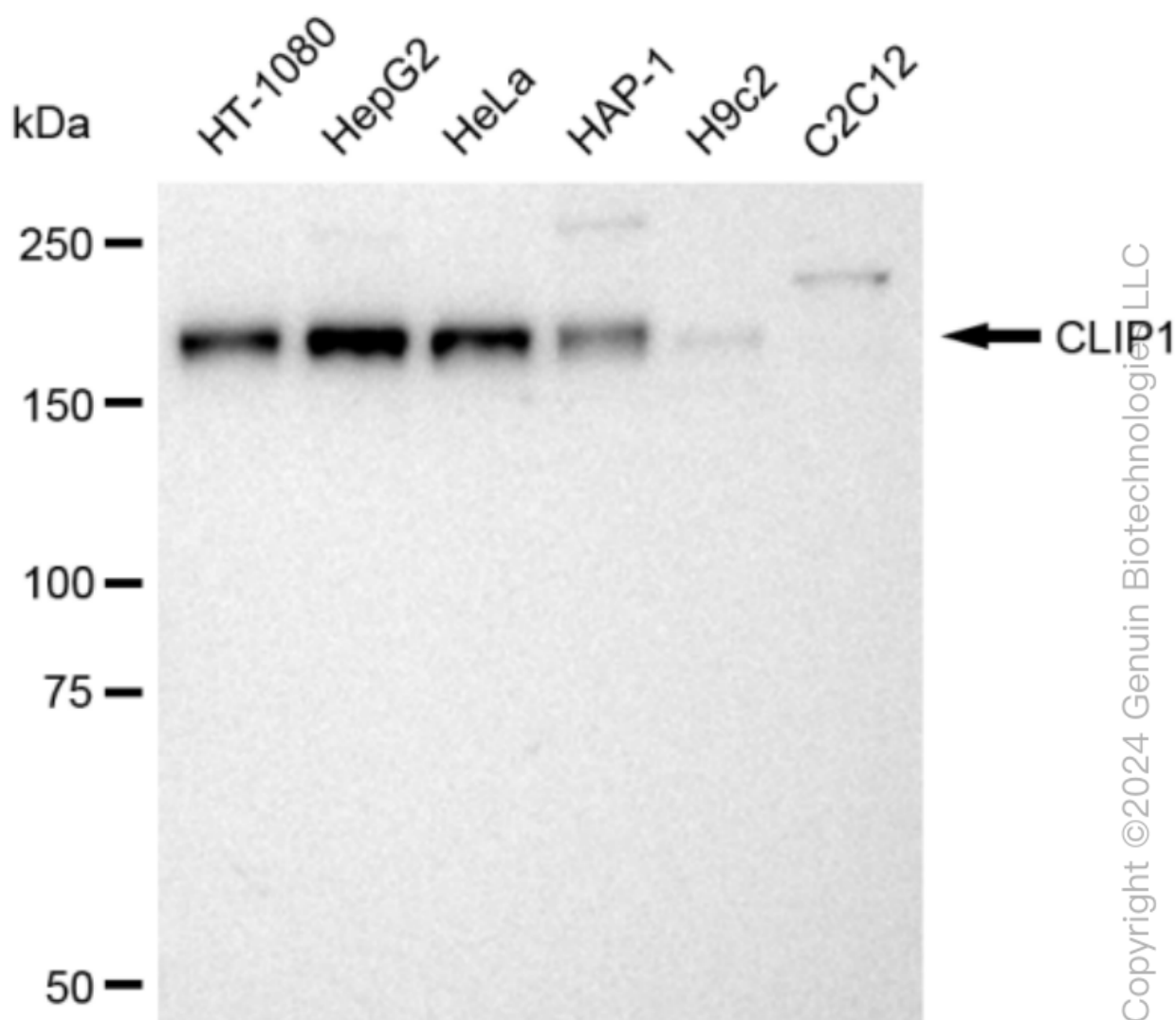
SALES@GENUINBIOTECH.COM
FAX: +1-540-855-7041

WWW.GENUINBIOTECH.COM

KD-Validated Anti-CLIP1 Recombinant Rabbit Monoclonal Antibody

PAGE 3

Immunocytochemical staining of HepG2 cells with CLIP1 antibody (Cat#61343, 1:1,000). Nuclei were stained blue with DAPI; CLIP1 was stained magenta with Alexa Fluor® 647. Images were taken using Leica stellaris 5. Protein abundance based on laser Intensity and smart gain: Medium. Scale bar: 20 μ m.



Western blotting analysis using anti-CLIP1 antibody (Cat#61343). Total cell lysates (30 μ g) from various cell lines were loaded and separated by SDS-PAGE. The blot was incubated with anti-CLIP1 antibody (Cat#61343, 1:5,000) and HRP-conjugated goat anti-rabbit secondary antibody (Cat#201, 1:20,000) respectively. Image was developed using FeQ™ ECL Substrate Kit (Cat#226).

SUPPORT

SUPPORT@GENUINBIOTECH.COM
TEL: +1-540-855-7041

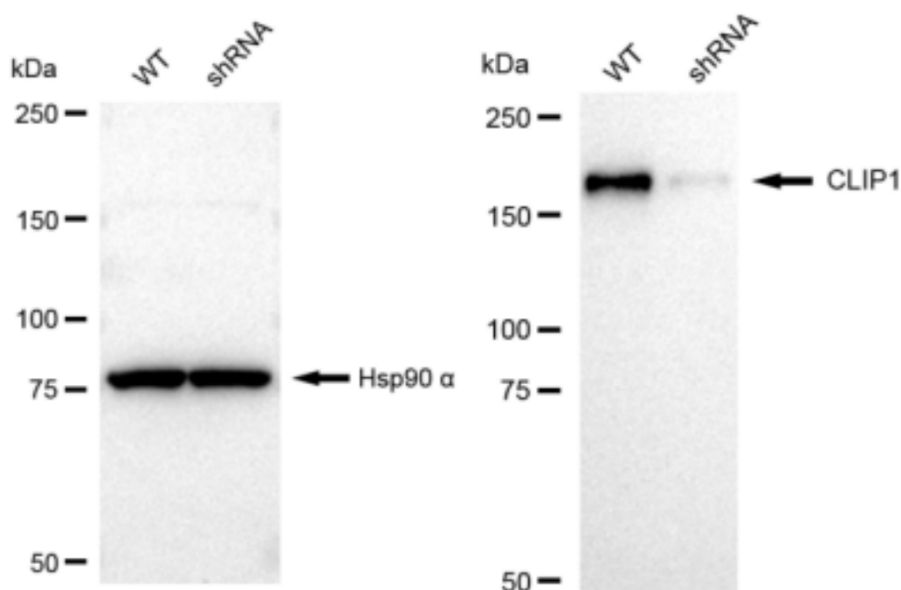
ORDERS

SALES@GENUINBIOTECH.COM
FAX: +1-540-855-7041

WWW.GENUINBIOTECH.COM

KD-Validated Anti-CLIP1 Recombinant Rabbit Monoclonal Antibody

PAGE 4



Copyright ©2024 Genuin Biotechnologies LLC

Western blotting analysis using anti-CLIP1 antibody (Cat#61343). CLIP1 expression in wild type (WT) and CLIP1 shRNA knockdown (KD) HeLa cells with 30 µg of total cell lysates. Hsp90 α serves as a loading control. The blot was incubated with anti-CLIP1 antibody (Cat#61343, 1:5,000) and HRP-conjugated goat anti-rabbit secondary antibody (Cat#201, 1:20,000) respectively. Image was developed using FeQ™ ECL Substrate Kit (Cat#226).

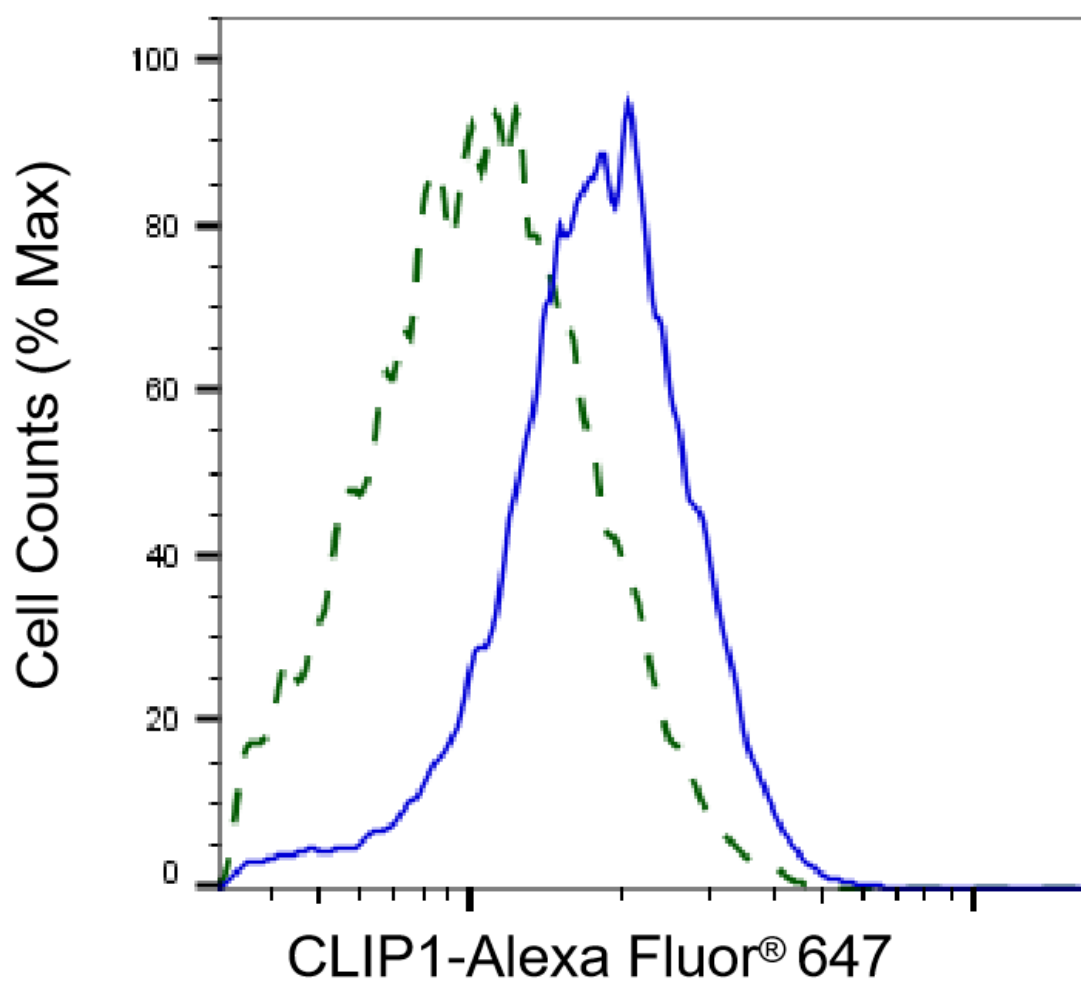
SUPPORT

SUPPORT@GENUINBIOTECH.COM
TEL: +1-540-855-7041

ORDERS

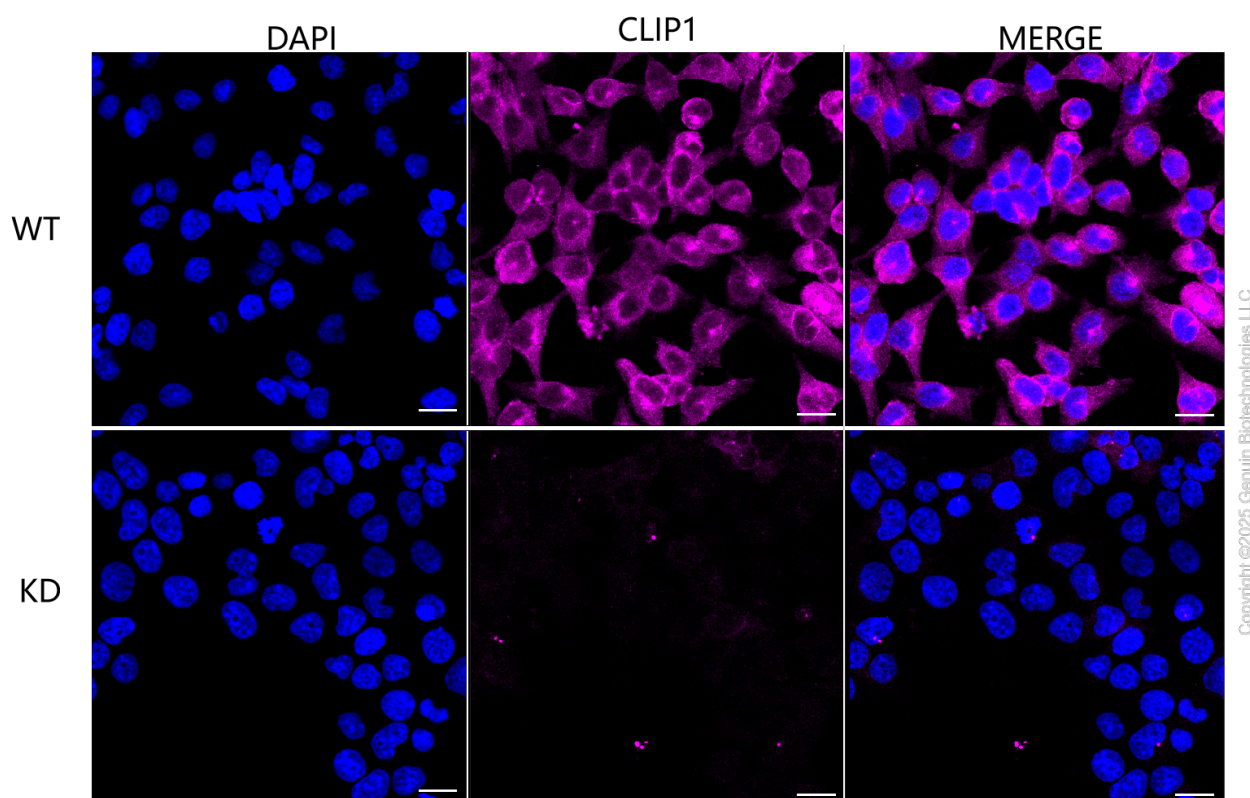
SALES@GENUINBIOTECH.COM
FAX: +1-540-855-7041

WWW.GENUINBIOTECH.COM



Copyright ©2025 Genuin Biotechnologies LLC

Validation of CLIP1 knockdown using flow cytometry. Wild-type(WT, Blue) and knockdown(KD, Green) HeLa cells were stained with anti-CLIP1 antibody (Cat#61343, 1:2,000) and analyzed using CytoFLEX.



Immunocytochemical staining of HeLa cells using anti-CLIP1 antibody (Cat#61343, 1:1,000), Top panel: wild-type (WT); Bottom panel: CLIP1 shRNA knockdown (KD). Nuclei were stained blue with DAPI; CLIP1 was stained magenta with Alexa Fluor® 647. Scale bar, 20 μ m. Permeabilization: Triton.