

# KD-Validated Anti-A-kinase anchoring protein 8 Recombinant Rabbit Monoclonal Antibody



**Catalog #: 61344**

## Aliases

AKAP8; A-Kinase Anchoring Protein 8; AKAP95; A Kinase (PRKA) Anchor Protein 8; A-Kinase Anchor Protein, 95kDa; A-Kinase Anchor Protein 8; AKAP 95; AKAP-8; A-Kinase Anchor Protein 95 KDa; DKFZp586B1222; DKFZP586B1222; AKAP-95

## Background

Gene Name: AKAP8

NCBI Gene Entry: [10270](#)

UniProt Entry: [O43823](#)

## Application Information

Molecular Weight: Predicted, 76 kDa, observed, 95 kDa

Clonality: Rabbit monoclonal antibody

Clone ID: 23GB2970

Species Reactivity: Human, mouse, rat

Applications Tested: Western blotting (WB), flow cytometry (FCM), immunocytochemistry (IC)

## Immunogen

A synthesized peptide derived from AKAP 95

## Isotype

Rabbit IgG

## Storage Buffer

Supplied in PBS (pH 7.4) containing 50% glycerol, and 0.02% sodium azide.

## Storage

Store at -20 °C for one year.

## Recommended Dilutions

Western Blotting (WB): 1:1,000-1:5,000

Flow Cytometry (FCM): 1:2,000

Immunocytochemistry (IC): 1:100-1:1,000

**Note:** This product is for research use only.

---

### SUPPORT

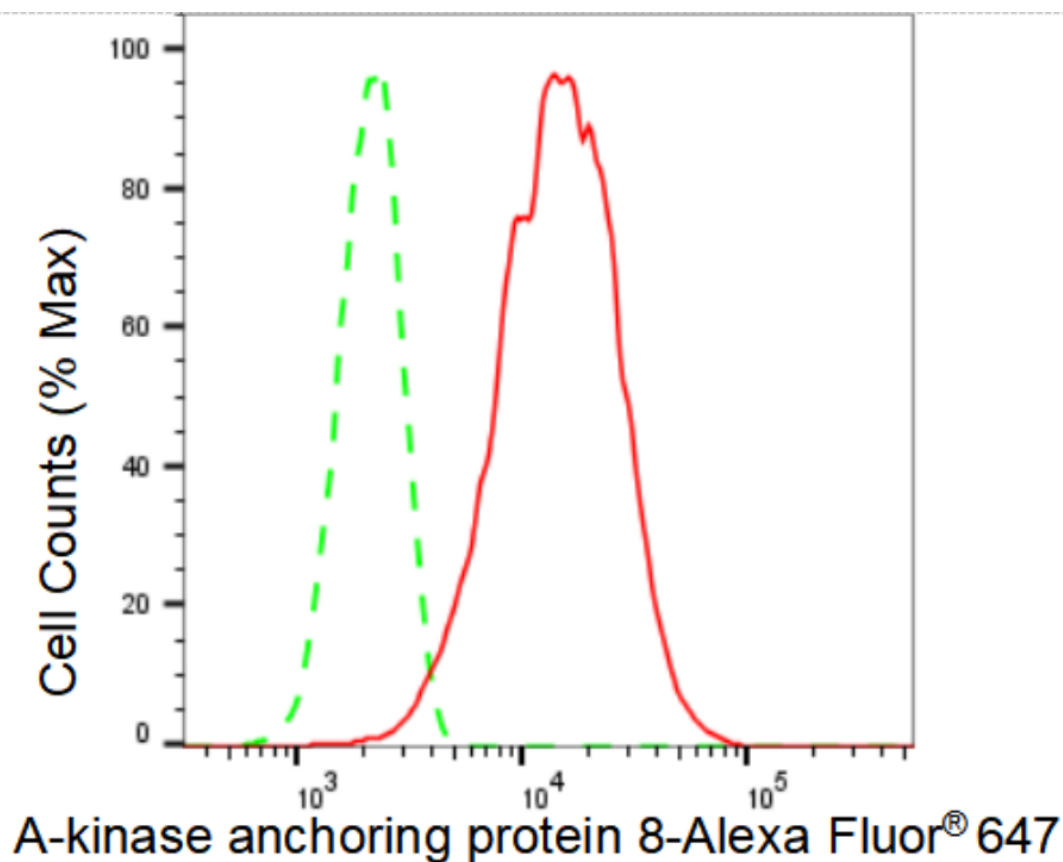
SUPPORT@GENUINBIOTECH.COM  
TEL: +1-540-855-7041

### ORDERS

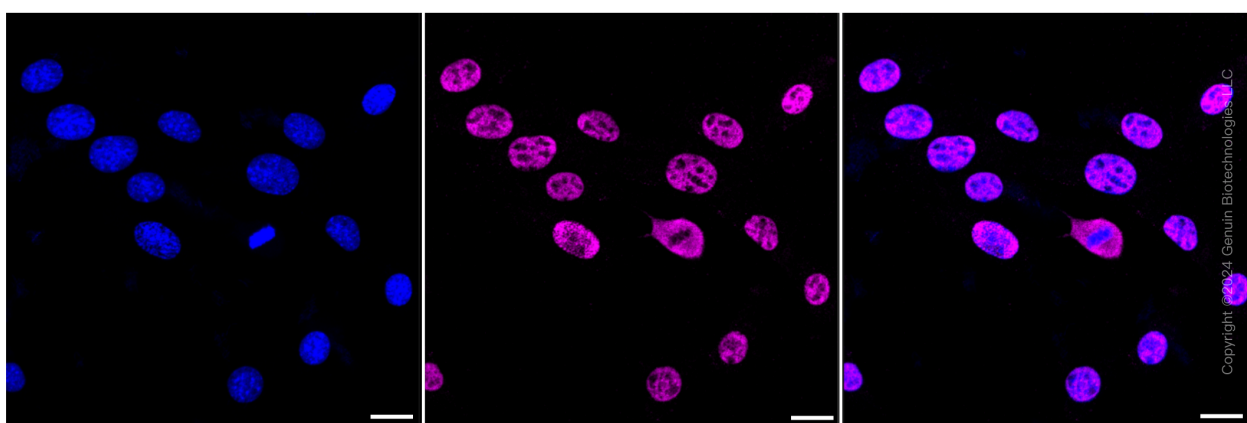
SALES@GENUINBIOTECH.COM  
FAX: +1-540-855-7041

[WWW.GENUINBIOTECH.COM](http://WWW.GENUINBIOTECH.COM)

**Validation Data**



Flow cytometric analysis of A-kinase anchoring protein 8 expression in C2C12 cells using A-kinase anchoring protein 8 antibody (Cat#61344, 1:2,000). Green, isotype control; red, A-kinase anchoring protein 8.



Immunocytochemical staining of C2C12 cells A-kinase anchoring protein 8 antibody (Cat#61344, 1:1,000). Nuclei were stained blue with DAPI; A-kinase anchoring protein 8 was stained magenta with Alexa Fluor® 647. Images were taken using Leica stellaris 5. Protein abundance based on laser Intensity and smart gain: High. Scale bar: 20  $\mu$ m.

**SUPPORT**

SUPPORT@GENUINBIOTECH.COM  
TEL: +1-540-855-7041

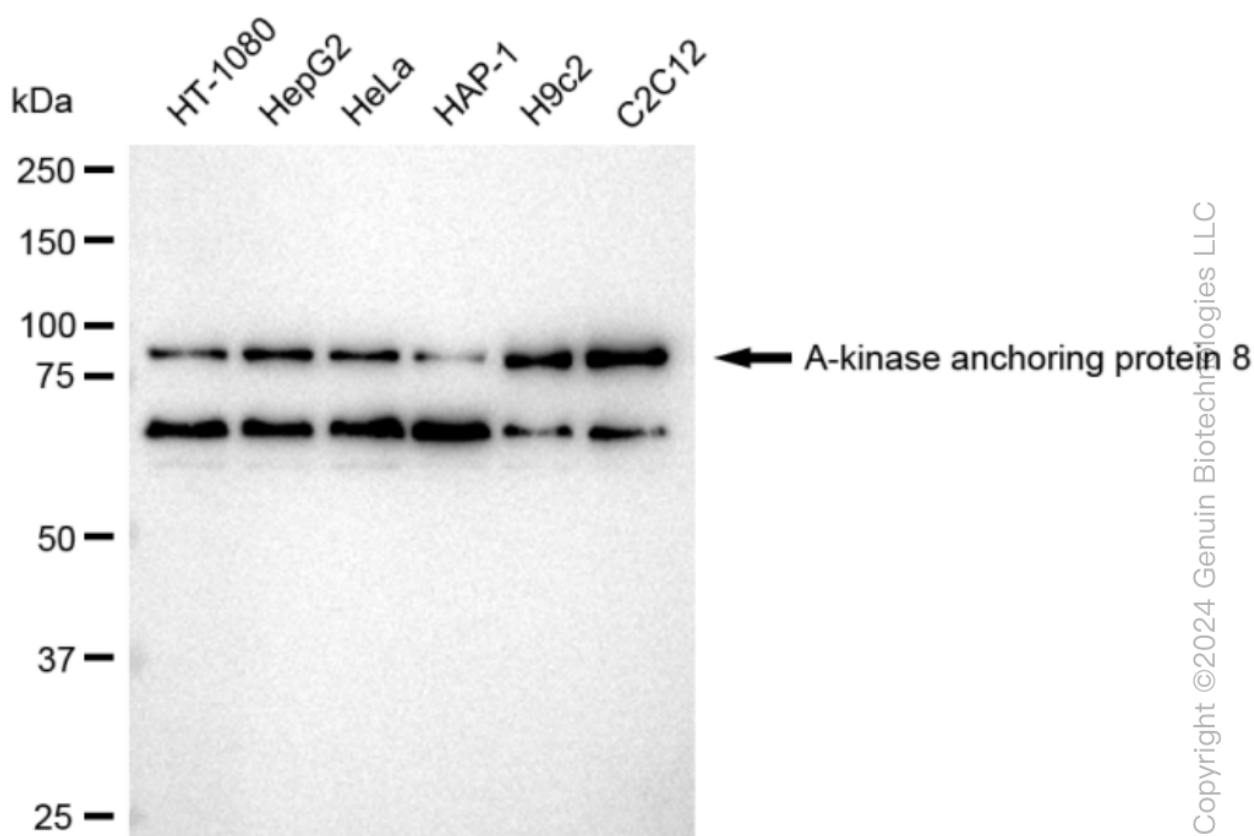
**ORDERS**

SALES@GENUINBIOTECH.COM  
FAX: +1-540-855-7041

**WWW.GENUINBIOTECH.COM**

## KD-Validated Anti-A-kinase anchoring protein 8 Recombinant Rabbit Monoclonal Antibody

PAGE 3



Western blotting analysis using anti-A-kinase anchoring protein 8 antibody (Cat#61344). Total cell lysates (30 µg) from various cell lines were loaded and separated by SDS-PAGE. The blot was incubated with anti-A-kinase anchoring protein 8 antibody (Cat#61344, 1:5,000) and HRP-conjugated goat anti-rabbit secondary antibody (Cat#201, 1:20,000) respectively. Image was developed using FeQ™ ECL Substrate Kit (Cat#226).

### SUPPORT

SUPPORT@GENUINBIOTECH.COM  
TEL: +1-540-855-7041

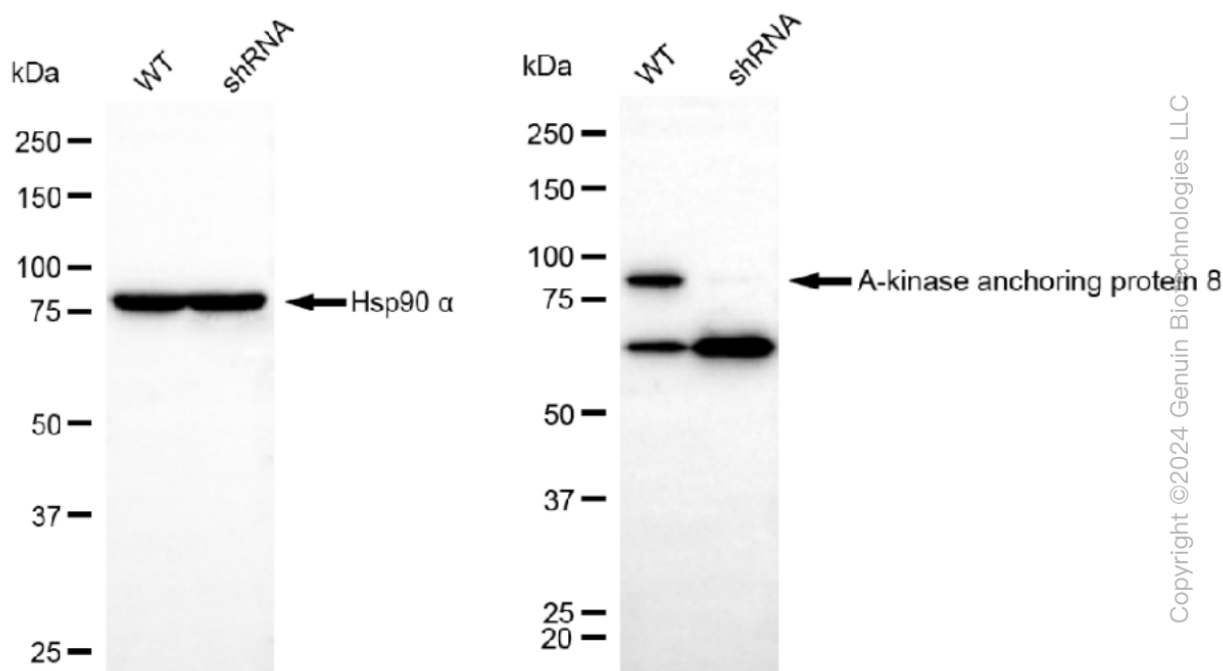
### ORDERS

SALES@GENUINBIOTECH.COM  
FAX: +1-540-855-7041

[WWW.GENUINBIOTECH.COM](http://WWW.GENUINBIOTECH.COM)

## KD-Validated Anti-A-kinase anchoring protein 8 Recombinant Rabbit Monoclonal Antibody

PAGE 4



Western blotting analysis using anti-A-kinase anchoring protein 8 antibody (Cat#61344). A-kinase anchoring protein 8 expression in wild type (WT) and A-kinase anchoring protein 8 shRNA knockdown (KD) HeLa cells with 30  $\mu$ g of total cell lysates.  $\beta$ -Tubulin serves as a loading control. The blot was incubated with anti-A-kinase anchoring protein 8 antibody (Cat#61344, 1:5,000) and HRP-conjugated goat anti-rabbit secondary antibody (Cat#201, 1:20,000) respectively. Image was developed using FeQ™ ECL Substrate Kit (Cat#226).

### SUPPORT

SUPPORT@GENUINBIOTECH.COM  
TEL: +1-540-855-7041

### ORDERS

SALES@GENUINBIOTECH.COM  
FAX: +1-540-855-7041

[WWW.GENUINBIOTECH.COM](http://WWW.GENUINBIOTECH.COM)