

KD-Validated Anti-Caveolin 3 Recombinant Rabbit Monoclonal Antibody



Catalog #: 61346

Aliases

CAV3; Caveolin 3; M-Caveolin; VIP-21; LGMD1C; VIP21; LQT9; Caveolin-3; Cavolin 3; MPDT; RMD2

Background

Gene Name: CAV3

NCBI Gene Entry: [859](#)

UniProt Entry: [P56539](#)

Application Information

Molecular Weight: Predicted, 17 kDa, observed, 17 kDa

Clonality: Rabbit monoclonal antibody

Clone ID: 23GB3040

Species Reactivity: Human, rat

Applications Tested: Western blotting (WB), flow cytometry (FCM), immunocytochemistry (IC)

Immunogen

A synthesized peptide derived from Caveolin-3

Isotype

Rabbit IgG

Storage Buffer

Supplied in PBS (pH 7.4) containing 50% glycerol, and 0.02% sodium azide.

Storage

Store at -20 °C for one year.

Recommended Dilutions

Western Blotting (WB): 1:1,000-1:5,000

Flow Cytometry (FCM): 1:2,000

Immunocytochemistry (IC): 1:100-1:1,000

Note: This product is for research use only.

Validation Data

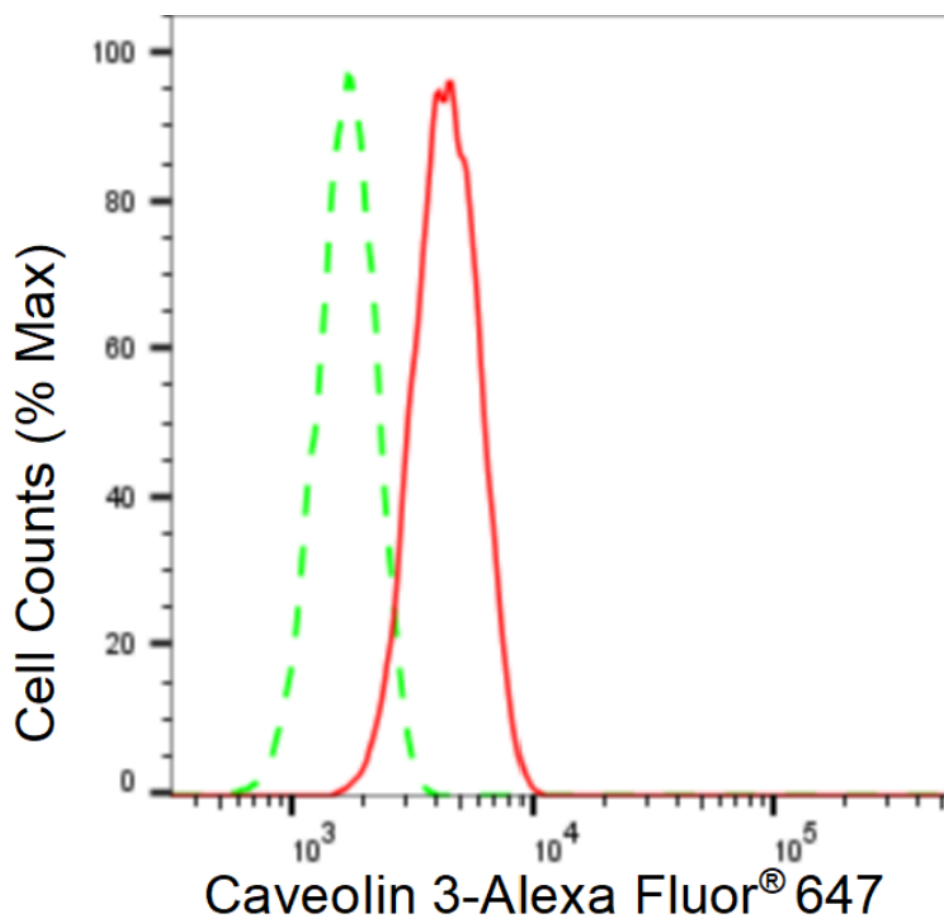
SUPPORT

SUPPORT@GENUINBIOTECH.COM
TEL: +1-540-855-7041

ORDERS

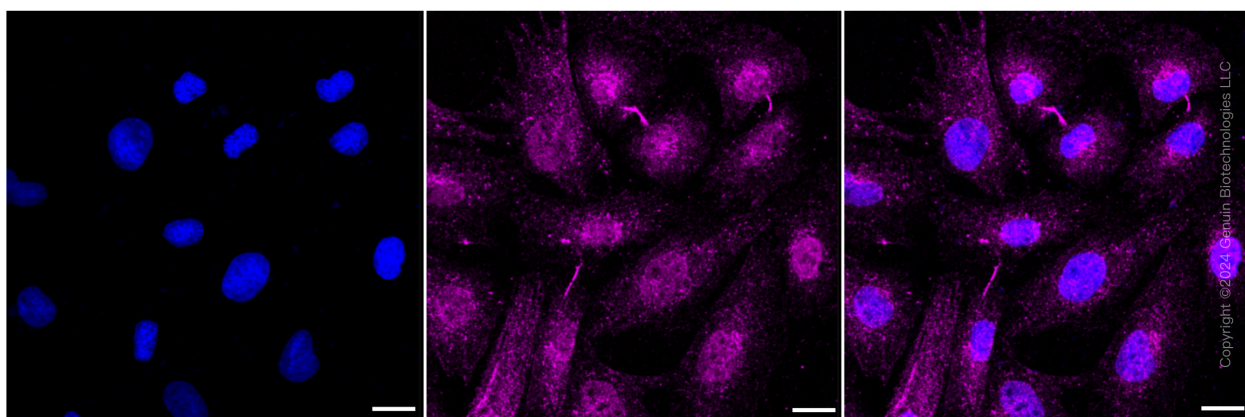
SALES@GENUINBIOTECH.COM
FAX: +1-540-855-7041

WWW.GENUINBIOTECH.COM



Copyright ©2024 Genuin Biotechnologies LLC

Flow cytometric analysis of Caveolin 3 expression in H9c2 cells using Caveolin 3 antibody (Cat#61346, 1:2,000). Green, isotype control; red, Caveolin 3.



Immunocytochemical staining of H9c2 cells with Caveolin 3 antibody (Cat#61346, 1:1,000). Nuclei were stained blue with DAPI; Caveolin 3 was stained magenta with Alexa Fluor® 647. Images were taken using Leica stellaris 5. Protein abundance based on laser Intensity and smart gain: Medium. Scale bar: 20 µm.

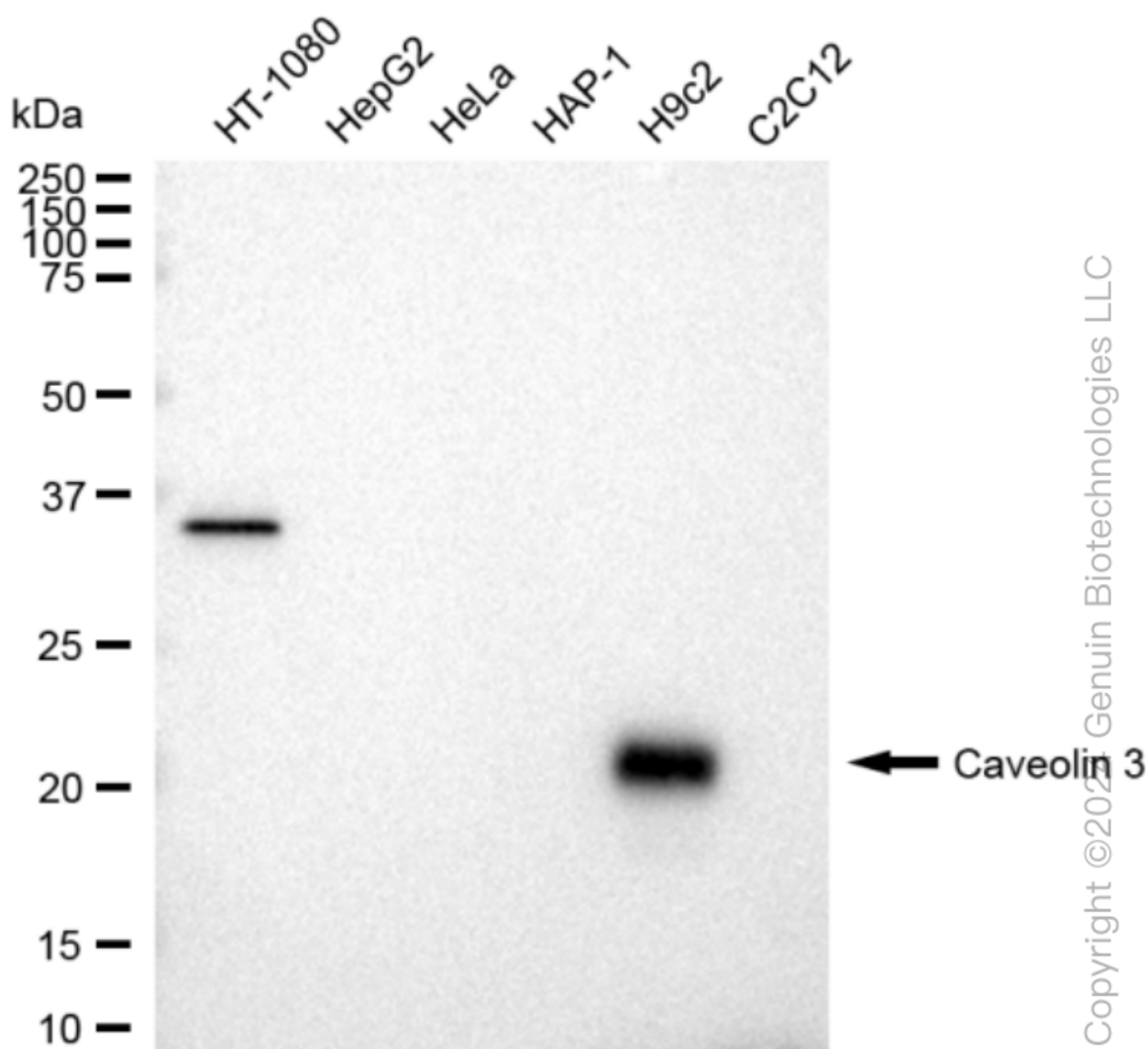
SUPPORT

SUPPORT@GENUINBIOTECH.COM
TEL: +1-540-855-7041

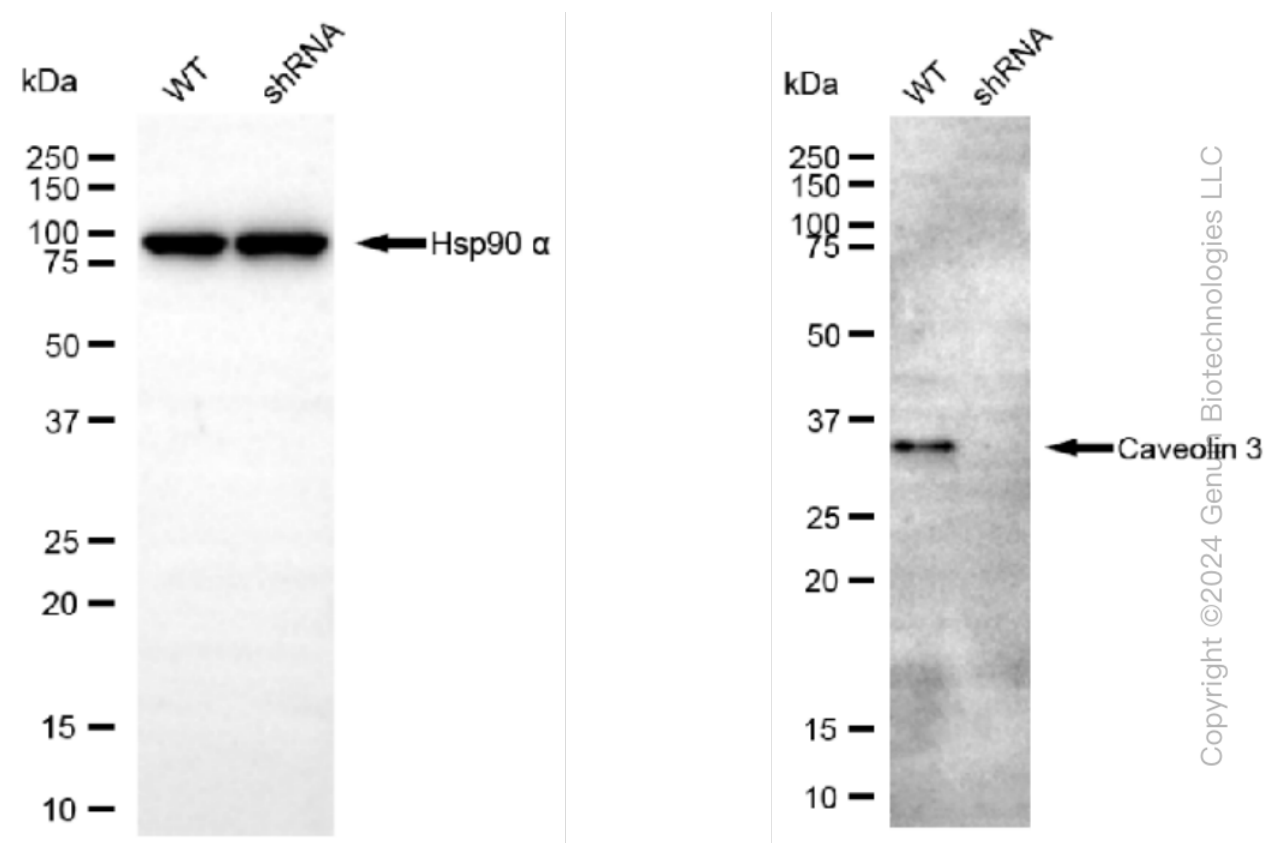
ORDERS

SALES@GENUINBIOTECH.COM
FAX: +1-540-855-7041

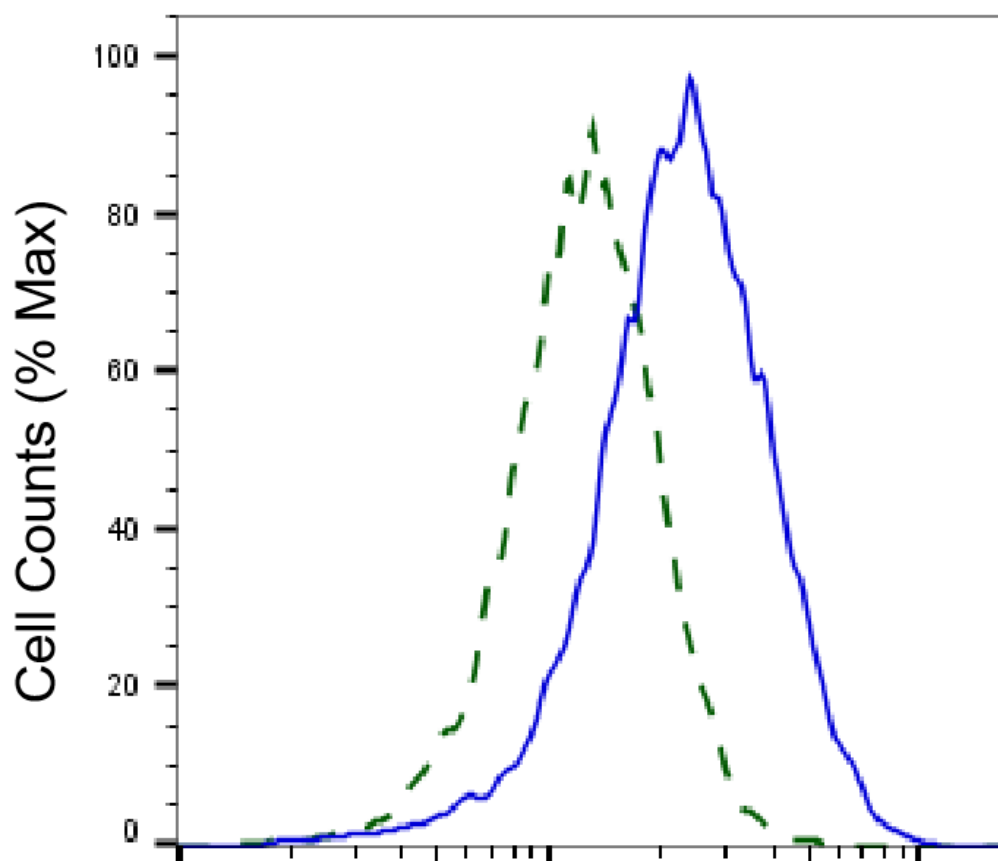
WWW.GENUINBIOTECH.COM



Western blotting analysis using anti-Caveolin 3 antibody (Cat#61346). Total cell lysates (30 µg) from various cell lines were loaded and separated by SDS-PAGE. The blot was incubated with anti-Caveolin 3 antibody (Cat#61346, 1:5,000) and HRP-conjugated goat anti-rabbit secondary antibody (Cat#201, 1:20,000) respectively. Image was developed using FeQ™ ECL Substrate Kit (Cat#226).



Western blotting analysis using anti-Caveolin 3 antibody (Cat#61346). Caveolin 3 expression in wild type (WT) and Caveolin 3 shRNA knockdown (KD) HeLa cells with 30 µg of total cell lysates. β-Tubulin serves as a loading control. The blot was incubated with anti-Caveolin 3 antibody (Cat#61346, 1:5,000) and HRP-conjugated goat anti-rabbit secondary antibody (Cat#201, 1:20,000) respectively. Image was developed using FeQ™ ECL Substrate Kit (Cat#226).



Copyright ©2025 Genuin Biotechnologies LLC

Caveolin 3-Alexa Fluor® 647

Validation of Caveolin 3 knockdown using flow cytometry. Wild-type(WT, Blue) and knockdown(KD, Green) HeLa cells were stained with anti-Caveolin 3 antibody (Cat#61346, 1:2,000) and analyzed using BD flow cytometer.