

# KD-Validated Anti-Catenin delta 1 Recombinant Rabbit Monoclonal Antibody



**Catalog #: 61347**

## Aliases

CTNND1; Catenin Delta 1; KIAA0384; P120; Catenin (Cadherin-Associated Protein), Delta 1; Cadherin-Associated Src Substrate; Catenin Delta-1; P120 Catenin; P120CAS; P120CTN; CTNND; CAS; P120(CAS); P120(CTN); P120(Ctn); P120(Cas); P120cas; P120ctn; BCDS2

## Background

Gene Name: CTNND1

NCBI Gene Entry: [1500](#)

UniProt Entry: [O60716](#)

## Application Information

Molecular Weight: Predicted, 108 kDa, observed, 105 kDa

Clonality: Rabbit monoclonal antibody

Clone ID: 23GB3025

Species Reactivity: Human, mouse, rat

Applications Tested: Western blotting (WB), flow cytometry (FCM), immunocytochemistry (IC)

## Immunogen

A synthesized peptide derived from human delta 1 Catenin/p120 Catenin

## Isotype

Rabbit IgG

## Storage Buffer

Supplied in PBS (pH 7.4) containing 50% glycerol, and 0.02% sodium azide.

## Storage

Store at -20 °C for one year.

## Recommended Dilutions

Western Blotting (WB): 1:1,000-1:5,000

Flow Cytometry (FCM): 1:2,000

Immunocytochemistry (IC): 1:100-1:1,000

**Note:** This product is for research use only.

---

### SUPPORT

SUPPORT@GENUINBIOTECH.COM  
TEL: +1-540-855-7041

### ORDERS

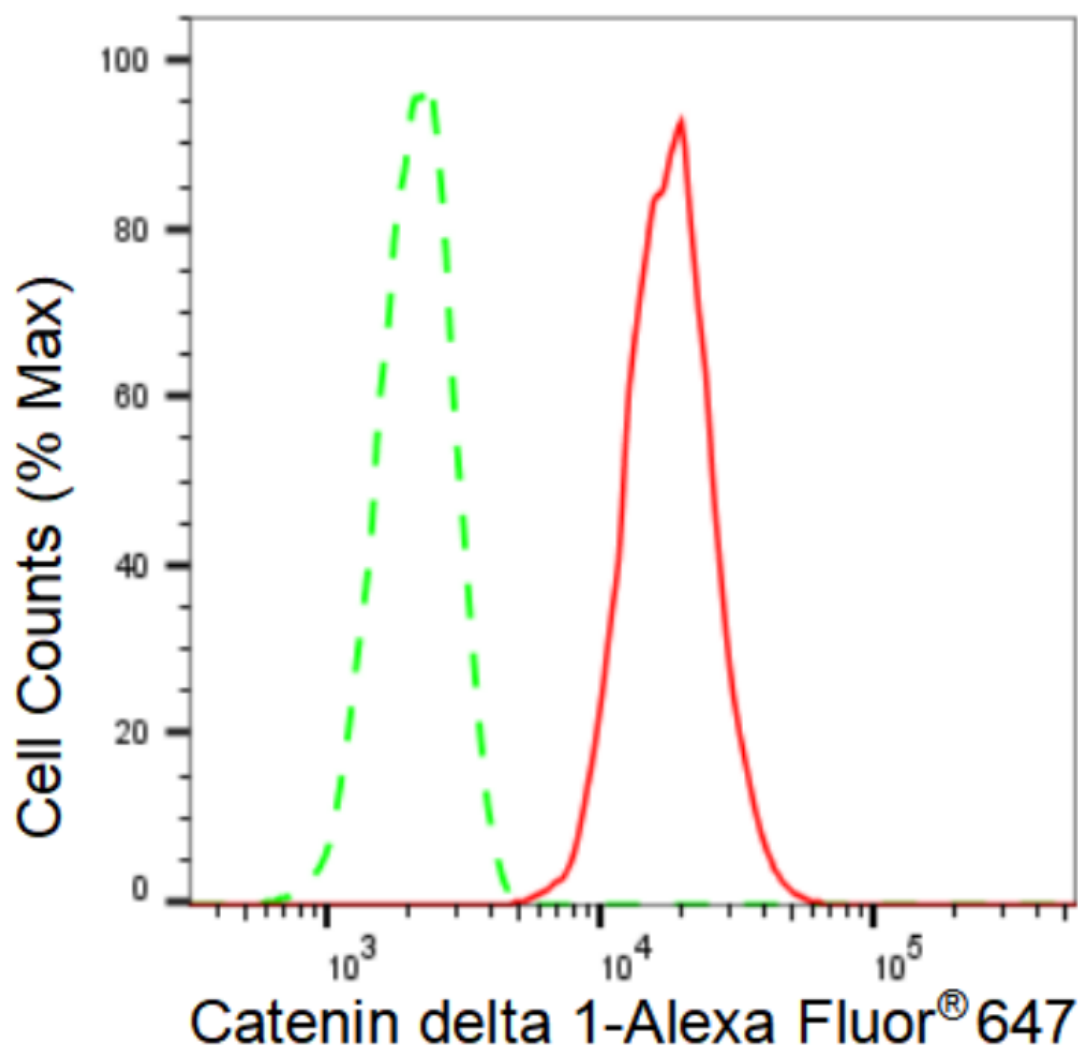
SALES@GENUINBIOTECH.COM  
FAX: +1-540-855-7041

[WWW.GENUINBIOTECH.COM](http://WWW.GENUINBIOTECH.COM)

# KD-Validated Anti-Catenin delta 1 Recombinant Rabbit Monoclonal Antibody

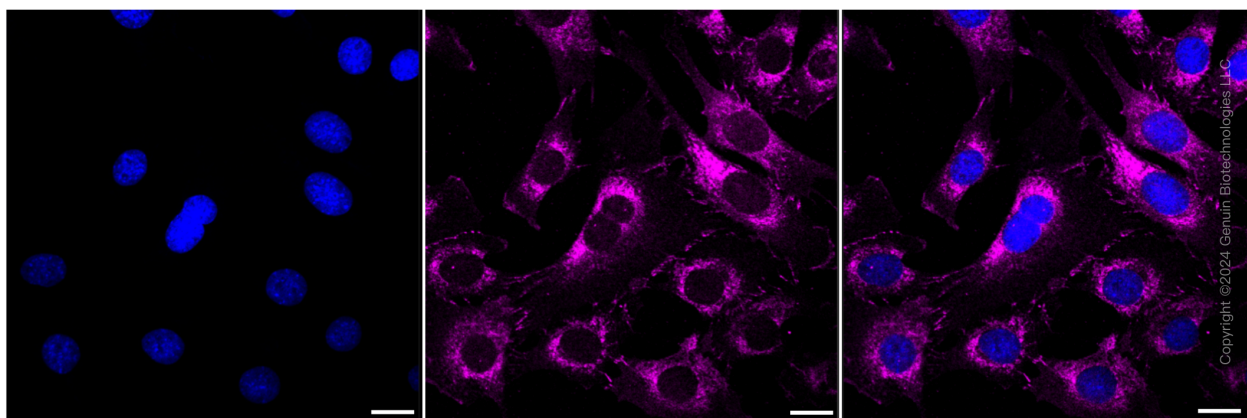
PAGE 2

## Validation Data



Copyright ©2024 Genuin Biotechnologies LLC

Flow cytometric analysis of Catenin delta 1 expression in C2C12 cells using Catenin delta 1 antibody (Cat#61347, 1:2,000). Green, isotype control; red, Catenin delta 1.



### SUPPORT

SUPPORT@GENUINBIOTECH.COM  
TEL: +1-540-855-7041

### ORDERS

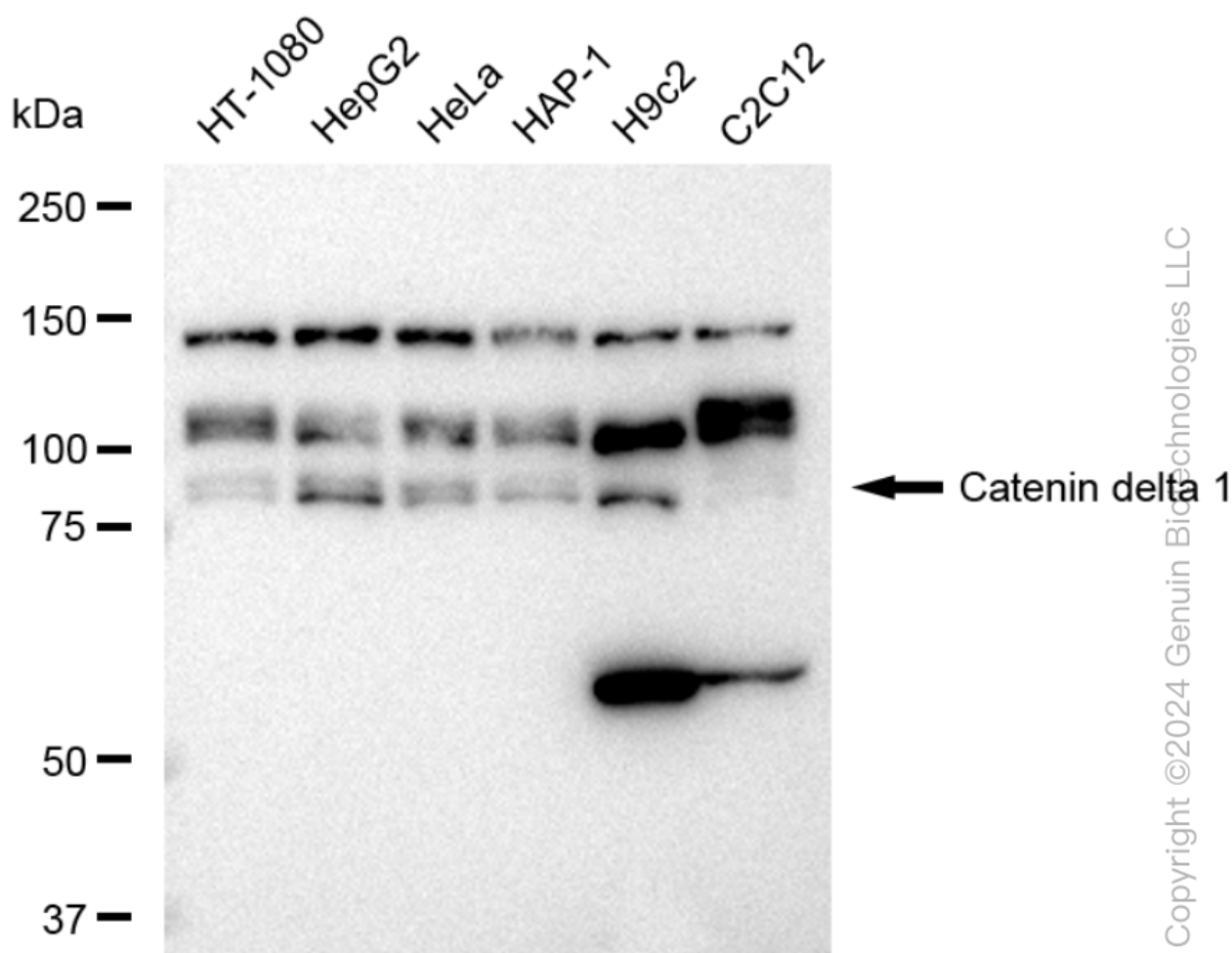
SALES@GENUINBIOTECH.COM  
FAX: +1-540-855-7041

WWW.GENUINBIOTECH.COM

## KD-Validated Anti-Catenin delta 1 Recombinant Rabbit Monoclonal Antibody

PAGE 3

Immunocytochemical staining of C2C12 cells with Catenin delta 1 antibody (Cat#61347, 1:1,000). Nuclei were stained blue with DAPI; Catenin delta 1 was stained magenta with Alexa Fluor® 647. Images were taken using Leica stellaris 5. Protein abundance based on laser Intensity and smart gain: Medium. Scale bar: 20 µm.



Western blotting analysis using anti-Catenin delta 1 antibody (Cat#61347). Total cell lysates (30 µg) from various cell lines were loaded and separated by SDS-PAGE. The blot was incubated with anti-Catenin delta 1 antibody (Cat#61347, 1:5,000) and HRP-conjugated goat anti-rabbit secondary antibody (Cat#201, 1:20,000) respectively. Image was developed using FeQ™ ECL Substrate Kit (Cat#226).

### SUPPORT

SUPPORT@GENUINBIOTECH.COM  
TEL: +1-540-855-7041

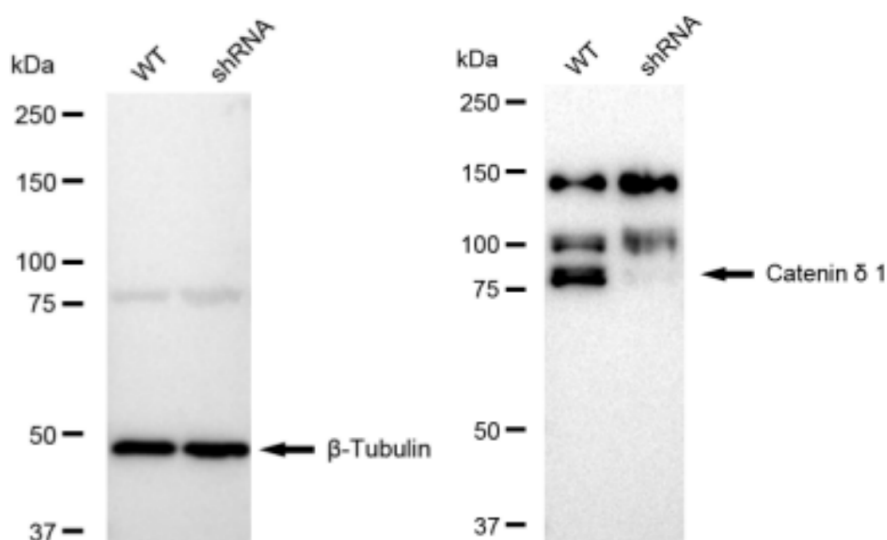
### ORDERS

SALES@GENUINBIOTECH.COM  
FAX: +1-540-855-7041

WWW.GENUINBIOTECH.COM

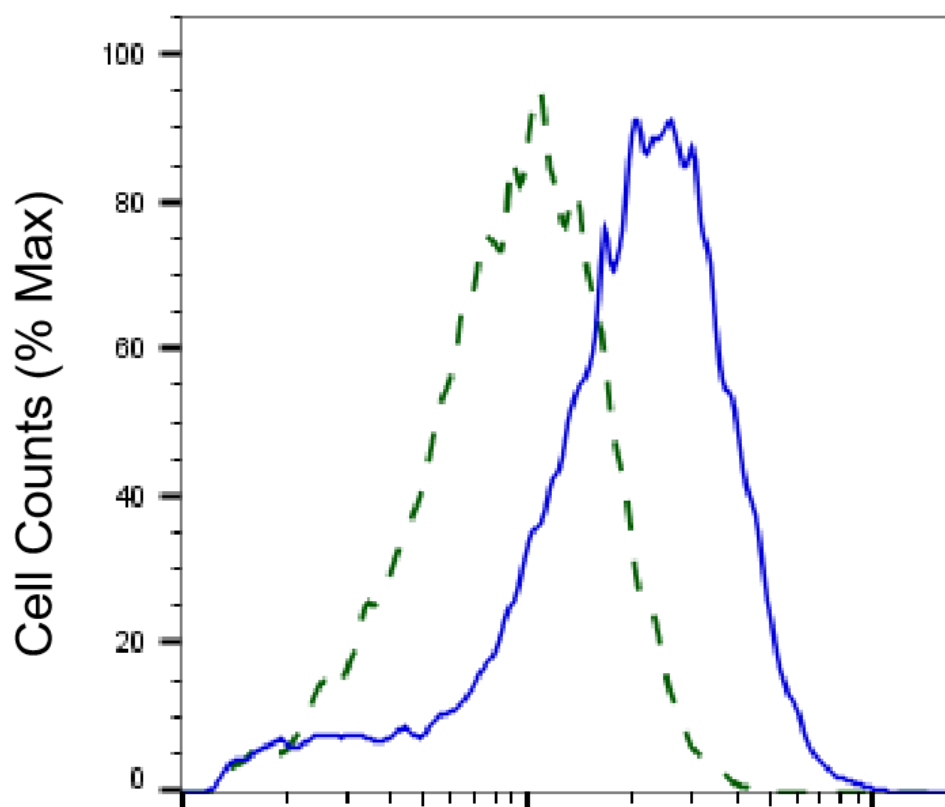
## KD-Validated Anti-Catenin delta 1 Recombinant Rabbit Monoclonal Antibody

PAGE 4



Copyright ©2024 Genuin Biotechnologies LLC

Western blotting analysis using anti-Catenin  $\delta$  1 antibody (Cat#61347). Catenin  $\delta$  1 expression in wild type (WT) and Catenin  $\delta$  1 shRNA knockdown (KD) HeLa cells with 30  $\mu$ g of total cell lysates.  $\beta$ -Tubulin serves as a loading control. The blot was incubated with anti-Catenin  $\delta$  1 antibody (Cat#61347, 1:5,000) and HRP-conjugated goat anti-rabbit secondary antibody (Cat#201, 1:20,000) respectively. Image was developed using FeQ™ ECL Substrate Kit (Cat#226).



Copyright ©2025 Genuin Biotechnologies LLC

Catenin delta 1 / CTNND1-Alexa Fluor<sup>®</sup> 647

### SUPPORT

SUPPORT@GENUINBIOTECH.COM  
TEL: +1-540-855-7041

### ORDERS

SALES@GENUINBIOTECH.COM  
FAX: +1-540-855-7041

WWW.GENUINBIOTECH.COM

## **KD-Validated Anti-Catenin delta 1 Recombinant Rabbit Monoclonal Antibody**

PAGE 5

Validation of Catenin delta 1 / CTNND1 knockdown using flow cytometry. Wild-type(WT, Blue) and knockdown(KD, Green) HeLa cells were stained with anti-Catenin delta 1 / CTNND1 antibody (Cat#61347, 1:2,000) and analyzed using BD flow cytometer.

---

### **SUPPORT**

SUPPORT@GENUINBIOTECH.COM  
TEL: +1-540-855-7041

### **ORDERS**

SALES@GENUINBIOTECH.COM  
FAX:+1-540-855-7041

**WWW.GENUINBIOTECH.COM**