

KD-Validated Anti-Bcl-XL Recombinant Rabbit Monoclonal Antibody



Catalog #: 61349

Aliases

BCL2L1; BCL2 Like 1; BCL2L; BCLX; PPP1R52; Protein Phosphatase 1, Regulatory Subunit 52; Apoptosis Regulator Bcl-X; Bcl-2-Like Protein 1; Bcl-X; BCL-XL/S; Bcl2-L-1; Bcl-XL; Bcl-XS; BCL-XL; BCL-XS; BCL-X

Background

Gene Name: BCL2L1

NCBI Gene Entry: [598](#)

UniProt Entry: [Q07817](#)

Application Information

Molecular Weight: Predicted, 26 kDa, observed, 26 kDa

Clonality: Rabbit monoclonal antibody

Clone ID: 23GB3000

Species Reactivity: Human, mouse, rat

Applications Tested: Western blotting (WB), flow cytometry (FCM), immunocytochemistry (IC)

Immunogen

A synthesized peptide derived from human Bcl-XL

Isotype

Rabbit IgG

Storage Buffer

Supplied in PBS (pH 7.4) containing 50% glycerol, and 0.02% sodium azide.

Storage

Store at -20 °C for one year.

Recommended Dilutions

Western Blotting (WB): 1:1,000-1:5,000

Flow Cytometry (FCM): 1:2,000

Immunocytochemistry (IC): 1:100-1:1,000

Note: This product is for research use only.

SUPPORT

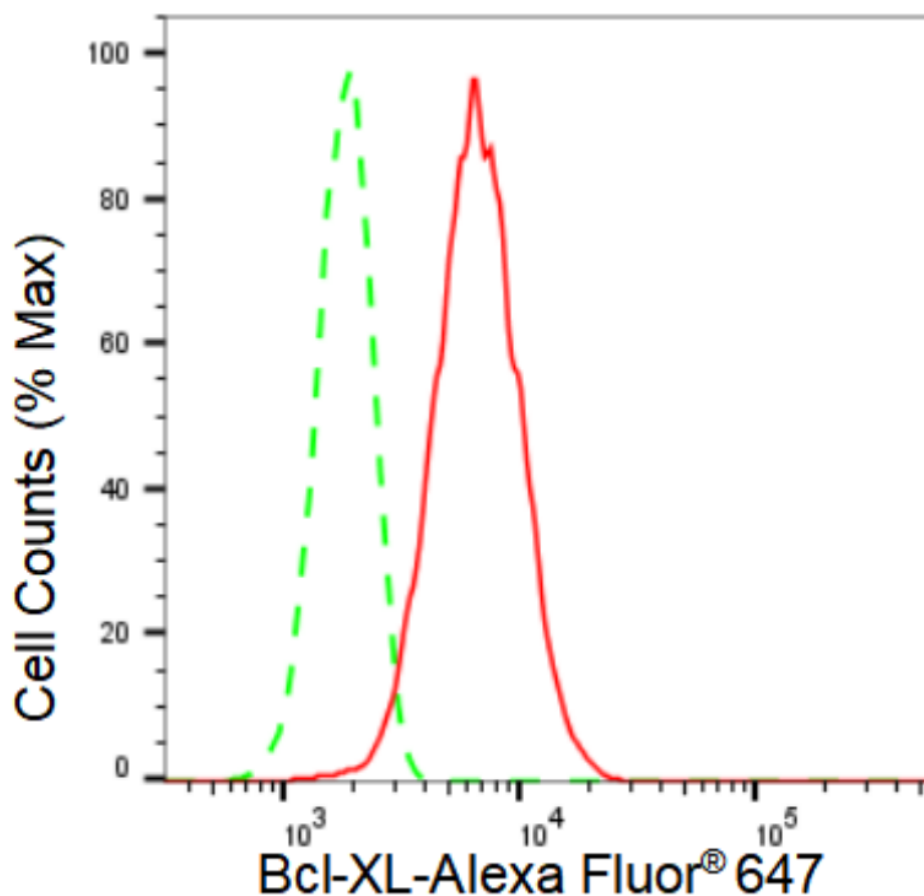
SUPPORT@GENUINBIOTECH.COM
TEL: +1-540-855-7041

ORDERS

SALES@GENUINBIOTECH.COM
FAX: +1-540-855-7041

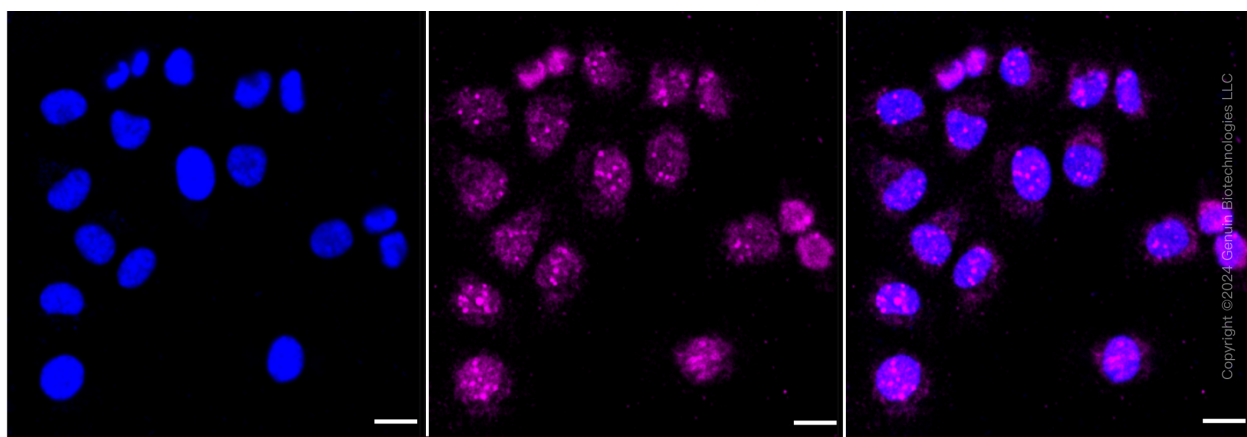
WWW.GENUINBIOTECH.COM

Validation Data



Copyright ©2024 Genuin Biotechnologies LLC

Flow cytometric analysis of Bcl-XL expression in HT-1080 cells using Bcl-XL antibody (Cat#61349, 1:2,000). Green, isotype control; red, Bcl-XL.



Copyright ©2024 Genuin Biotechnologies LLC

Immunocytochemical staining of HT-1080 cells with Bcl-XL antibody (Cat#61349, 1:1,000). Nuclei were stained blue with DAPI; Bcl-XL was stained magenta with Alexa Fluor® 647. Images were taken using Leica stellaris 5. Protein abundance based on laser Intensity and smart gain: Low. Scale bar: 20 µm.

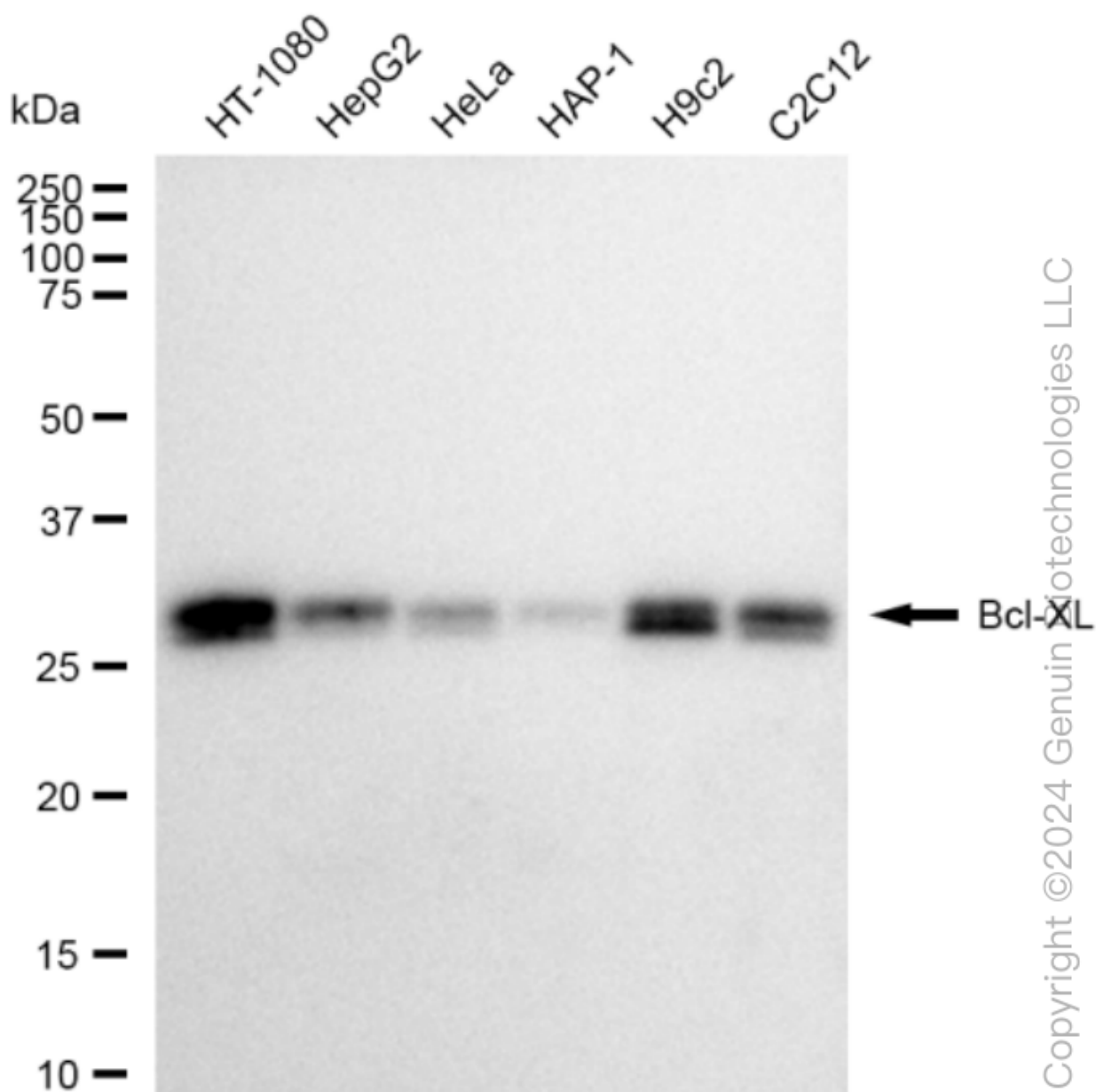
SUPPORT

SUPPORT@GENUINBIOTECH.COM
TEL: +1-540-855-7041

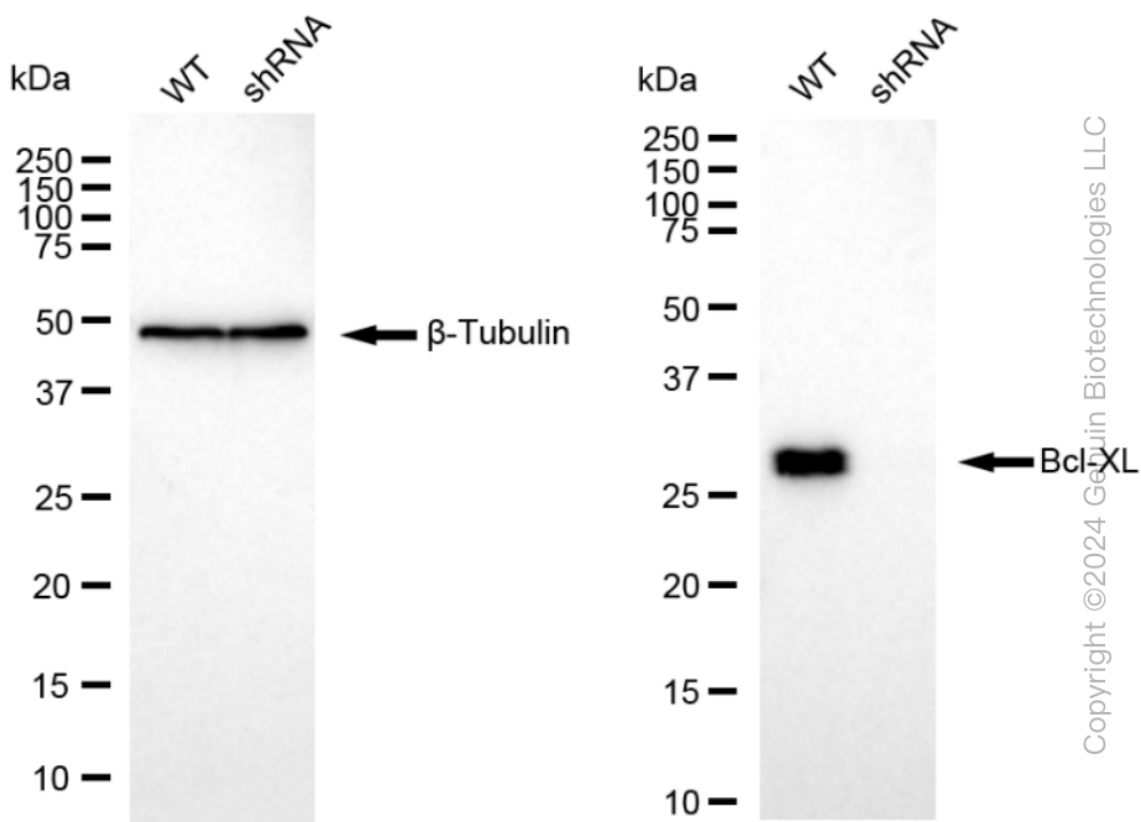
ORDERS

SALES@GENUINBIOTECH.COM
FAX: +1-540-855-7041

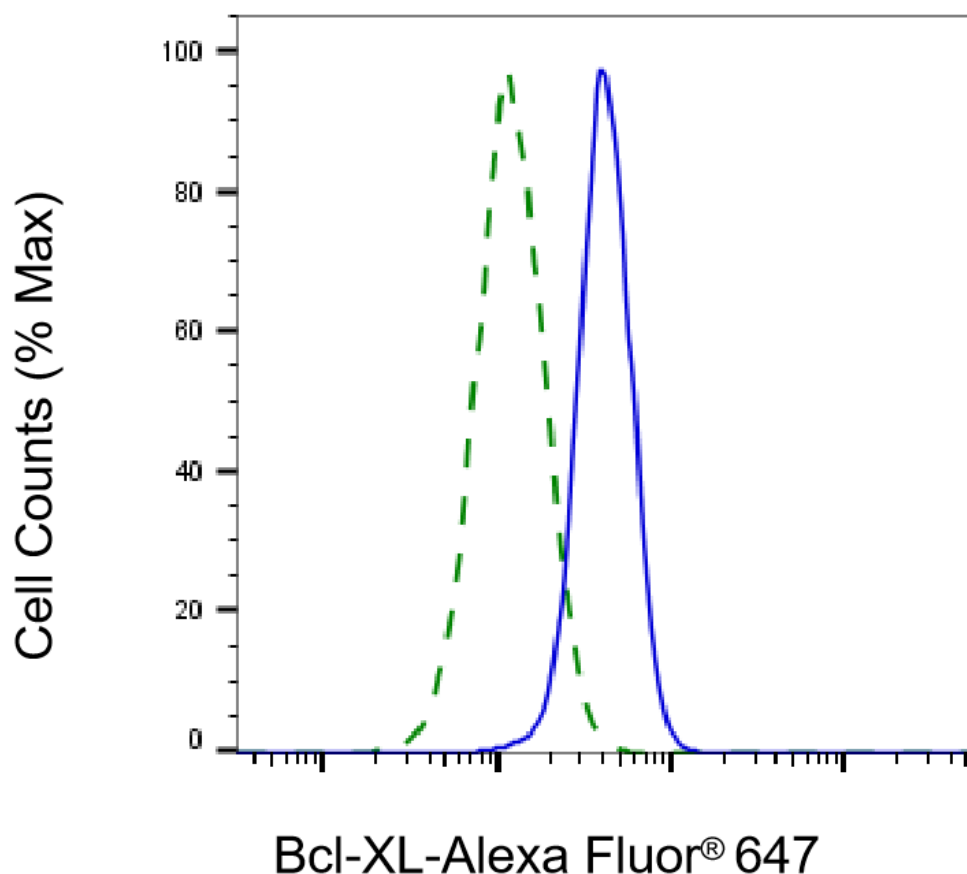
WWW.GENUINBIOTECH.COM



Western blotting analysis using anti-Bcl-XL antibody (Cat#61349). Total cell lysates (30 µg) from various cell lines were loaded and separated by SDS-PAGE. The blot was incubated with anti-Bcl-XL antibody (Cat#61349, 1:5,000) and HRP-conjugated goat anti-rabbit secondary antibody (Cat#201, 1:20,000) respectively. Image was developed using FeQ™ ECL Substrate Kit (Cat#226).



Western blotting analysis using anti-Bcl-XL antibody (Cat#61349). Bcl-XL expression in wild type (WT) and Bcl-XL shRNA knockdown (KD) HeLa cells with 30 μ g of total cell lysates. β -Tubulin serves as a loading control. The blot was incubated with anti-Bcl-XL antibody (Cat#61349, 1:5,000) and HRP-conjugated goat anti-rabbit secondary antibody (Cat#201, 1:20,000) respectively. Image was developed using FeQ™ ECL Substrate Kit (Cat#226).



Copyright ©2025 Genuin Biotechnologies LLC

Validation of Bcl-XL knockdown using flow cytometry. Wild-type(WT, Blue) and knockdown(KD, Green) HeLa cells were stained with anti-Bcl-XL antibody (Cat#61349, 1:2,000) and analyzed using CytoFLEX.