

KD-Validated Anti-Bridging integrator 1 Recombinant Rabbit Monoclonal Antibody



Catalog #: 61353

Aliases

BIN1; Bridging Integrator 1; Myc Box-Dependent-Interacting Protein 1; Amphiphysin II; SH3P9; AMPH2; AMPHL; Box-Dependent Myc-Interacting Protein 1; Amphiphysin-Like Protein; Amphiphysin 2; Box Dependant MYC Interacting Protein 1; CNM2

Background

Gene Name: BIN1

NCBI Gene Entry: [274](#)

UniProt Entry: [O00499](#)

Application Information

Molecular Weight: Predicted, 65 kDa, observed, 50,60,65kDa

Clonality: Rabbit monoclonal antibody

Clone ID: 23GB3010

Species Reactivity: Human, mouse, rat

Applications Tested: Western blotting (WB), flow cytometry (FCM), immunocytochemistry (IC)

Immunogen

A synthesized peptide derived from human BIN1

Isotype

Rabbit IgG

Storage Buffer

Supplied in PBS (pH 7.4) containing 50% glycerol, and 0.02% sodium azide.

Storage

Store at -20 °C for one year.

Recommended Dilutions

Western Blotting (WB): 1:1,000-1:5,000

Flow Cytometry (FCM): 1:2,000

Immunocytochemistry (IC): 1:100-1:1,000

Note: This product is for research use only.

SUPPORT

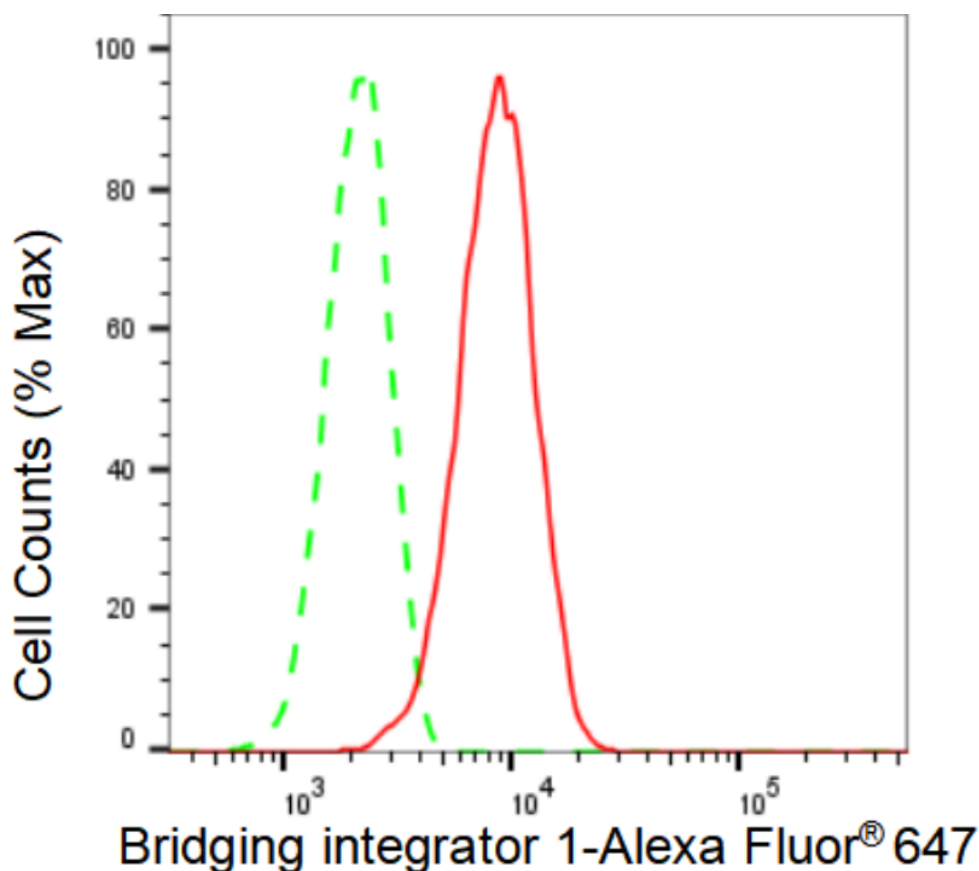
SUPPORT@GENUINBIOTECH.COM
TEL: +1-540-855-7041

ORDERS

SALES@GENUINBIOTECH.COM
FAX: +1-540-855-7041

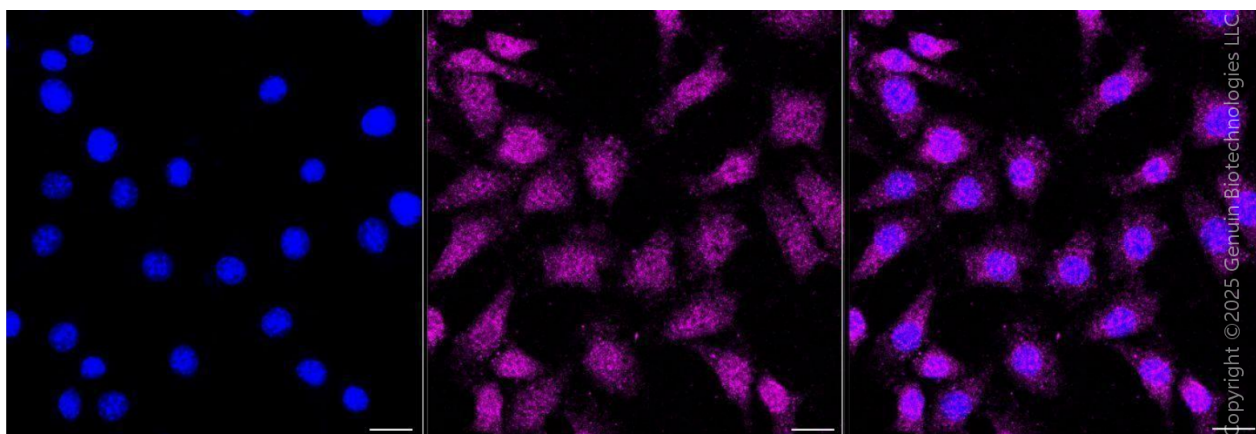
WWW.GENUINBIOTECH.COM

Validation Data



Copyright ©2024 Genuin Biotechnologies LLC

Flow cytometric analysis of Bridging integrator 1 expression in C2C12 cells using Bridging integrator 1 antibody (Cat#61353, 1:2,000). Green, isotype control; red, Bridging integrator 1.

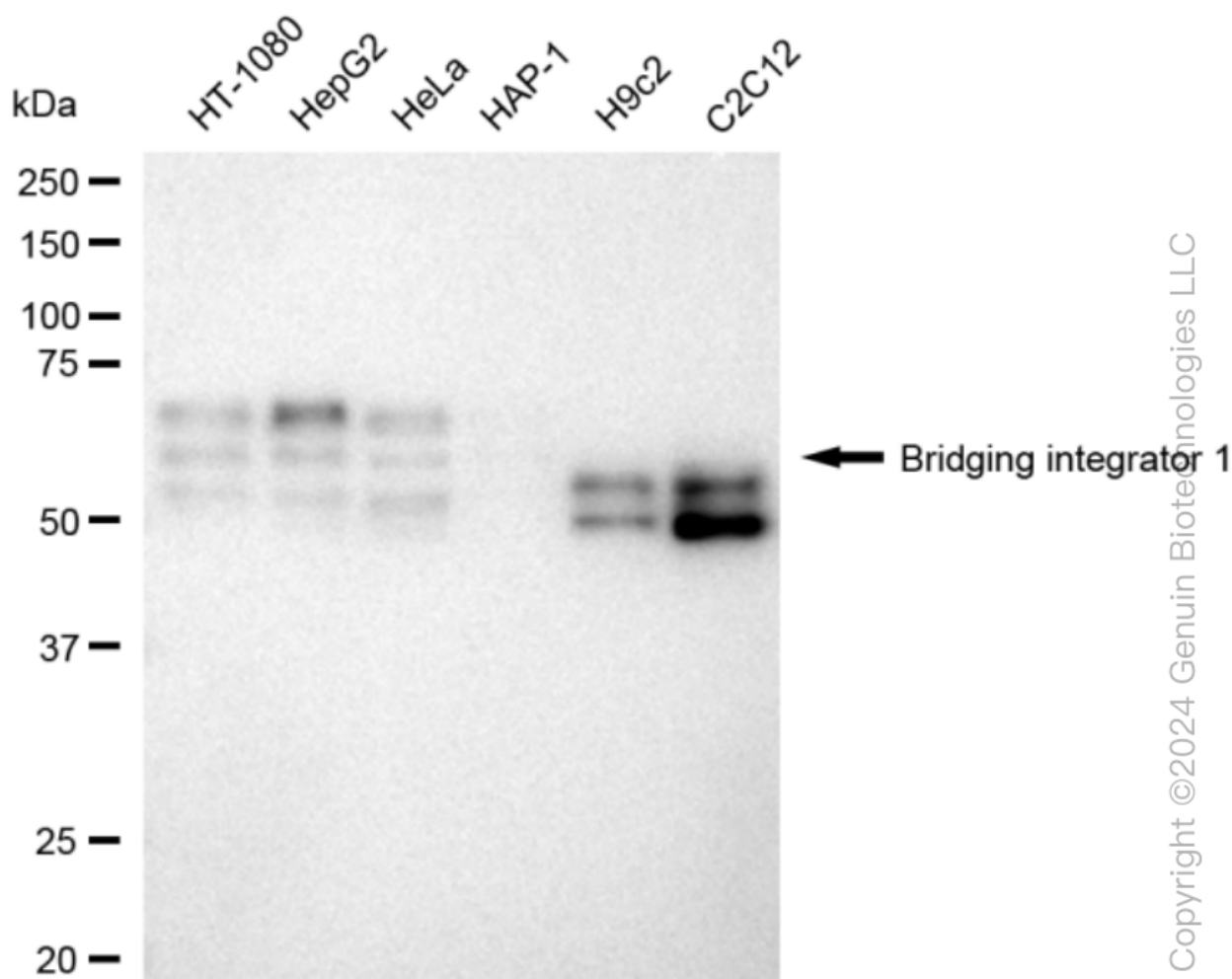


Copyright ©2025 Genuin Biotechnologies LLC

Immunocytochemical staining of C2C12 cells with anti-Bridging integrator 1 antibody (Cat#61353, 1:1,000). Nuclei were stained blue with DAPI; Bridging integrator 1 was stained magenta with Alexa Fluor® 647. Images were taken using Leica stellaris 5. Protein abundance based on laser Intensity and smart gain: Medium. Scale bar, 20 µm.

KD-Validated Anti-Bridging integrator 1 Recombinant Rabbit Monoclonal Antibody

PAGE 3



Western blotting analysis using anti-Bridging integrator 1 antibody (Cat#61353). Total cell lysates (30 µg) from various cell lines were loaded and separated by SDS-PAGE. The blot was incubated with anti-Bridging integrator 1 antibody (Cat#61353, 1:5,000) and HRP-conjugated goat anti-rabbit secondary antibody (Cat#201, 1:20,000) respectively. Image was developed using FeQ™ ECL Substrate Kit (Cat#226).

SUPPORT

SUPPORT@GENUINBIOTECH.COM
TEL: +1-540-855-7041

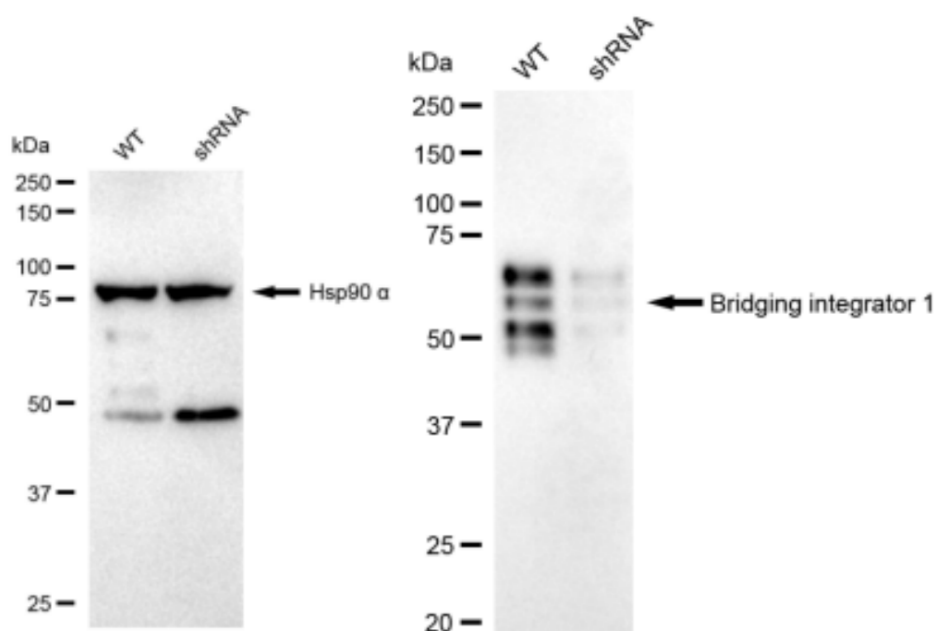
ORDERS

SALES@GENUINBIOTECH.COM
FAX: +1-540-855-7041

WWW.GENUINBIOTECH.COM

KD-Validated Anti-Bridging integrator 1 Recombinant Rabbit Monoclonal Antibody

PAGE 4



Copyright ©2024 Genuin Biotechnologies LLC

Western blotting analysis using anti-Bridging integrator 1 antibody (Cat#61353). Bridging integrator 1 expression in wild type (WT) and Bridging integrator 1 shRNA knockdown (KD) HeLa cells with 30 µg of total cell lysates. Hsp90 α serves as a loading control. The blot was incubated with anti-Bridging integrator 1 antibody (Cat#61353, 1:5,000) and HRP-conjugated goat anti-rabbit secondary antibody (Cat#201, 1:20,000) respectively. Image was developed using FeQ™ ECL Substrate Kit (Cat#226).

SUPPORT

SUPPORT@GENUINBIOTECH.COM
TEL: +1-540-855-7041

ORDERS

SALES@GENUINBIOTECH.COM
FAX: +1-540-855-7041

WWW.GENUINBIOTECH.COM