

# KD-Validated Anti-ELP3 Recombinant Rabbit Monoclonal Antibody



**Catalog #: 61359**

## Aliases

ELP3; Elongator Acetyltransferase Complex Subunit 3; KAT9; TRNA Uridine(34) Acetyltransferase; Elongator Complex Protein 3; FLJ10422; Elongation Protein 3 Homolog (S. Cerevisiae); Protein Lysine Acetyltransferase ELP3; Elongation Protein 3 Homolog; EC 2.3.1.48; EC 2.3.1.-; HELP3

## Background

Gene Name: ELP3

NCBI Gene Entry: [55140](#)

UniProt Entry: [Q9H9T3](#)

## Application Information

Molecular Weight: Predicted, 62 kDa; observed, 58 kDa

Clonality: Rabbit monoclonal antibody

Clone ID: 25GB2350

Species Reactivity: Human, mouse, rat

Applications Tested: Western blotting (WB), flow cytometry (FCM), immunocytochemistry (IC)

## Immunogen

A synthesized peptide derived from human KAT9 / Elp3

## Isotype

Rabbit IgG

## Storage Buffer

Supplied in PBS (pH 7.4) containing 50% glycerol, and 0.02% sodium azide.

## Storage

Store at -20 °C for one year.

## Recommended Dilutions

Western Blotting (WB): 1:1,000-1:5,000

Flow Cytometry (FCM): 1:2,000

Immunocytochemistry (IC): 1:100-1:1,000

---

### SUPPORT

SUPPORT@GENUINBIOTECH.COM  
TEL: +1-540-855-7041

### ORDERS

SALES@GENUINBIOTECH.COM  
FAX: +1-540-855-7041

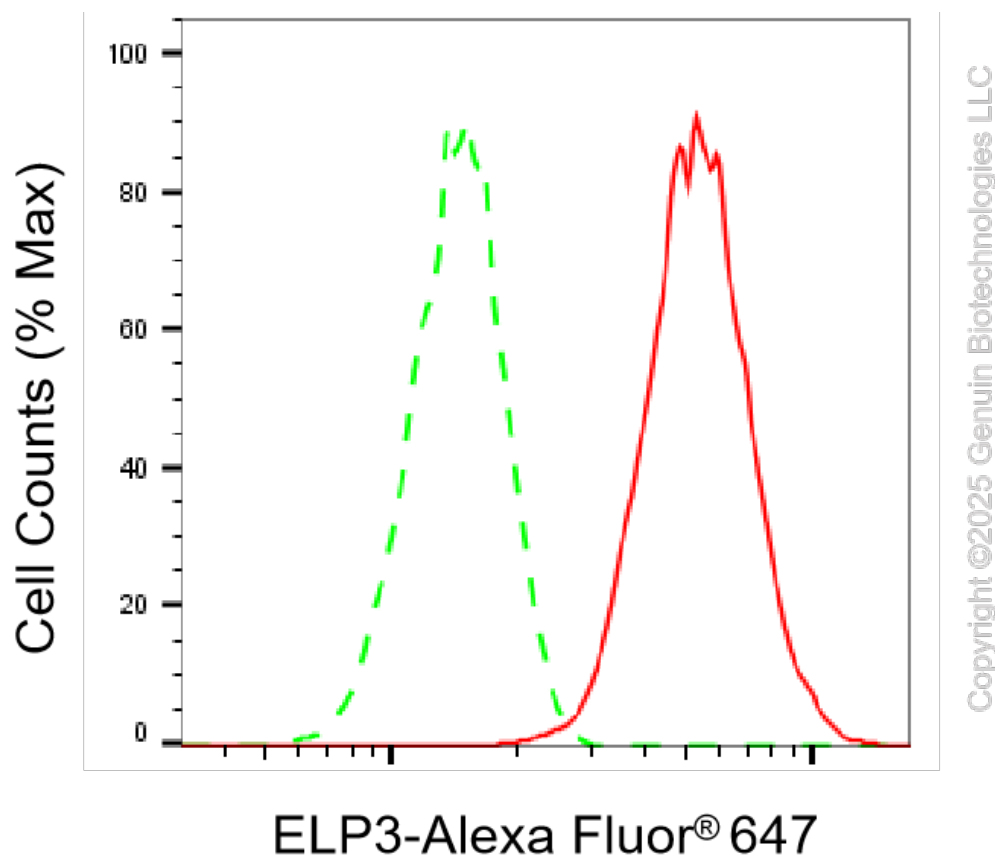
[WWW.GENUINBIOTECH.COM](http://WWW.GENUINBIOTECH.COM)

## KD-Validated Anti-ELP3 Recombinant Rabbit Monoclonal Antibody

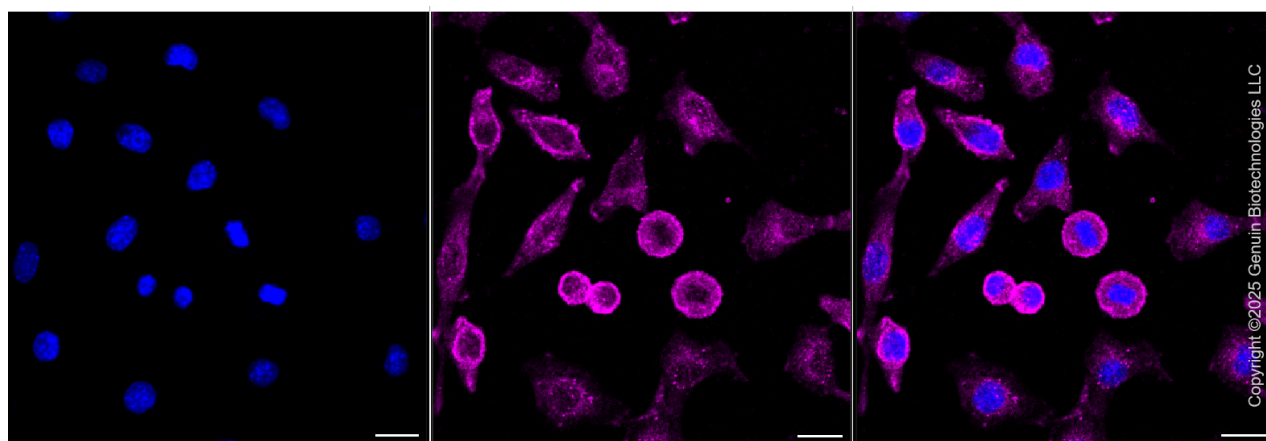
PAGE 2

**Note:** This product is for research use only.

### Validation Data



Flow cytometric analysis of ELP3 expression in C2C12 cells using ELP3 antibody (Cat#61359, 1:2,000). Green, isotype control; red, ELP3.



Immunocytochemical staining of HepG2 cells with anti-ELP3 antibody (Cat#61359, 1:1,000). Nuclei were stained blue with anti-DAPI; ELP3 was stained magenta with Alexa Fluor® 647. Images were taken using Leica stellaris 5. Protein abundance based on laser Intensity and smart

#### SUPPORT

SUPPORT@GENUINBIOTECH.COM  
TEL: +1-540-855-7041

#### ORDERS

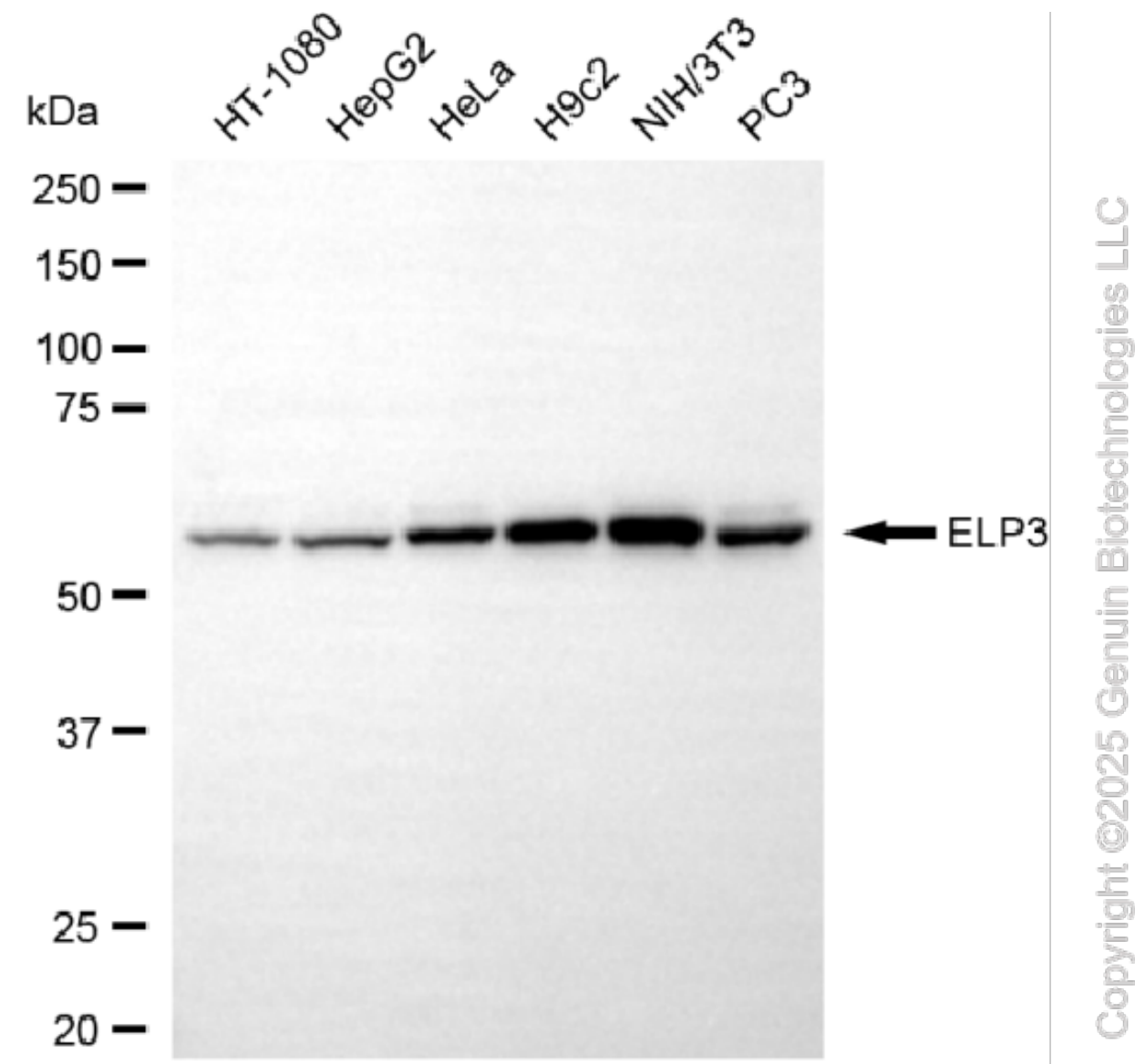
SALES@GENUINBIOTECH.COM  
FAX: +1-540-855-7041

[WWW.GENUINBIOTECH.COM](http://WWW.GENUINBIOTECH.COM)

## KD-Validated Anti-ELP3 Recombinant Rabbit Monoclonal Antibody

PAGE 3

gain: Low. Scale bar, 20  $\mu$ m.



Western blotting analysis using anti-ELP3 antibody (Cat#61359). Total cell lysates (30  $\mu$ g) from various cell lines were loaded and separated by SDS-PAGE. The blot was incubated with anti-ELP3 antibody (Cat#61359, 1:5,000) and HRP-conjugated goat anti-rabbit secondary antibody (Cat#201, 1:20,000) respectively. Image was developed using NaQ™ ECL Substrate Kit (Cat#716).

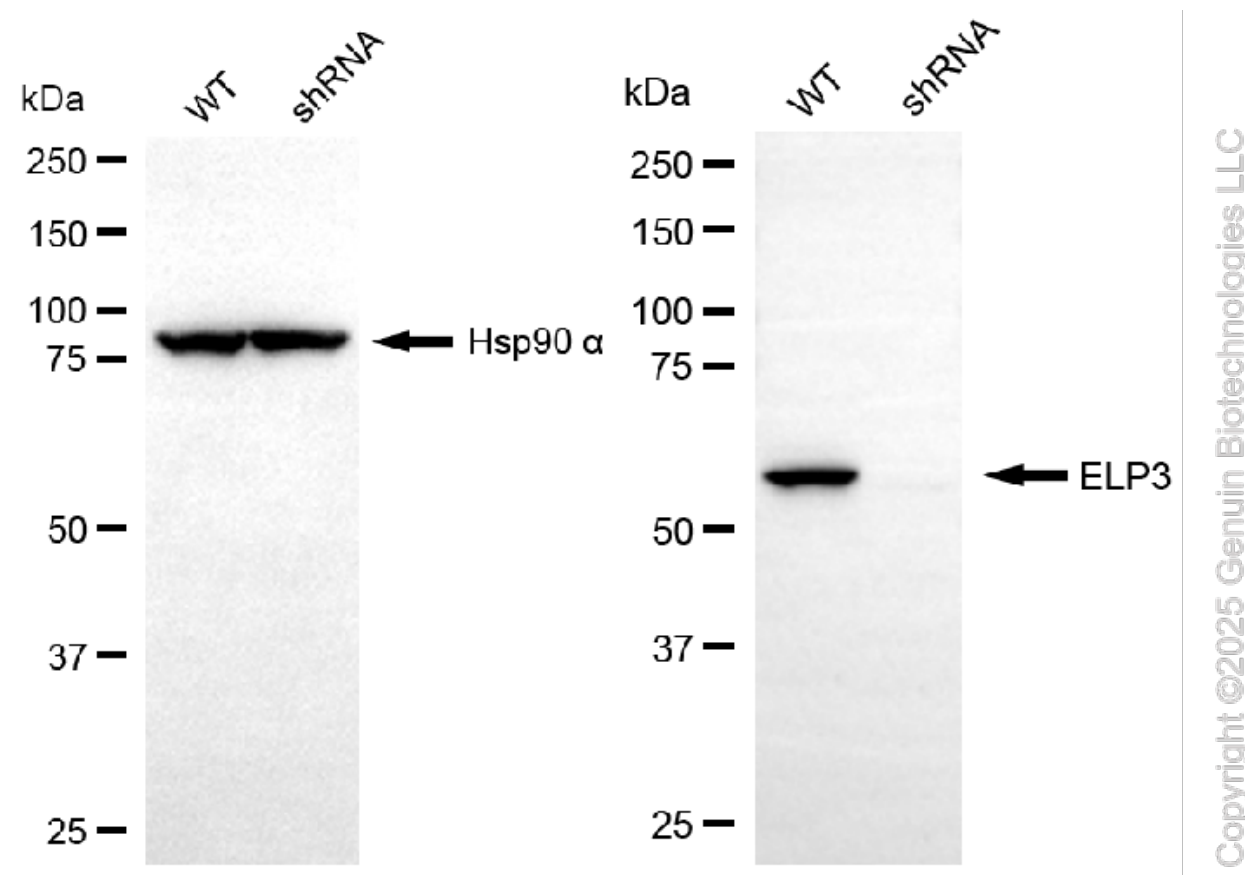
### SUPPORT

SUPPORT@GENUINBIOTECH.COM  
TEL: +1-540-855-7041

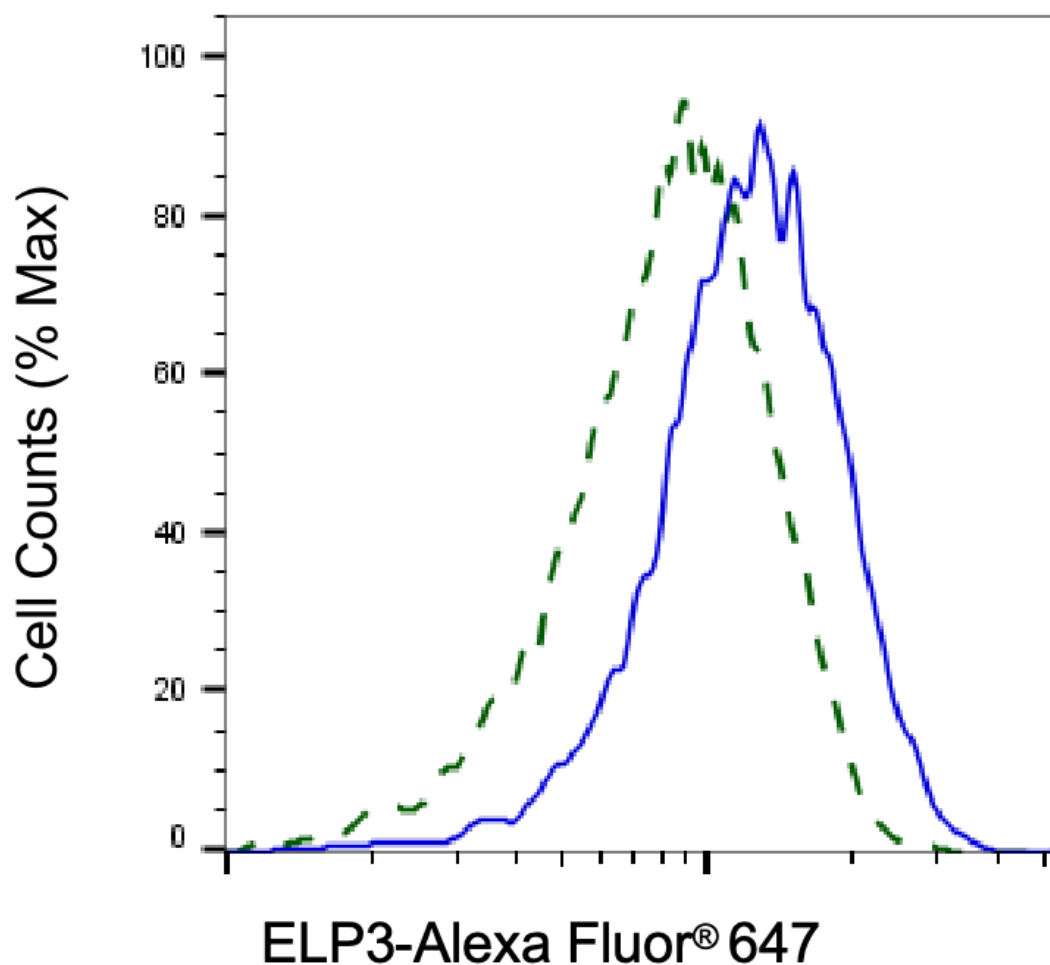
### ORDERS

SALES@GENUINBIOTECH.COM  
FAX: +1-540-855-7041

[WWW.GENUINBIOTECH.COM](http://WWW.GENUINBIOTECH.COM)

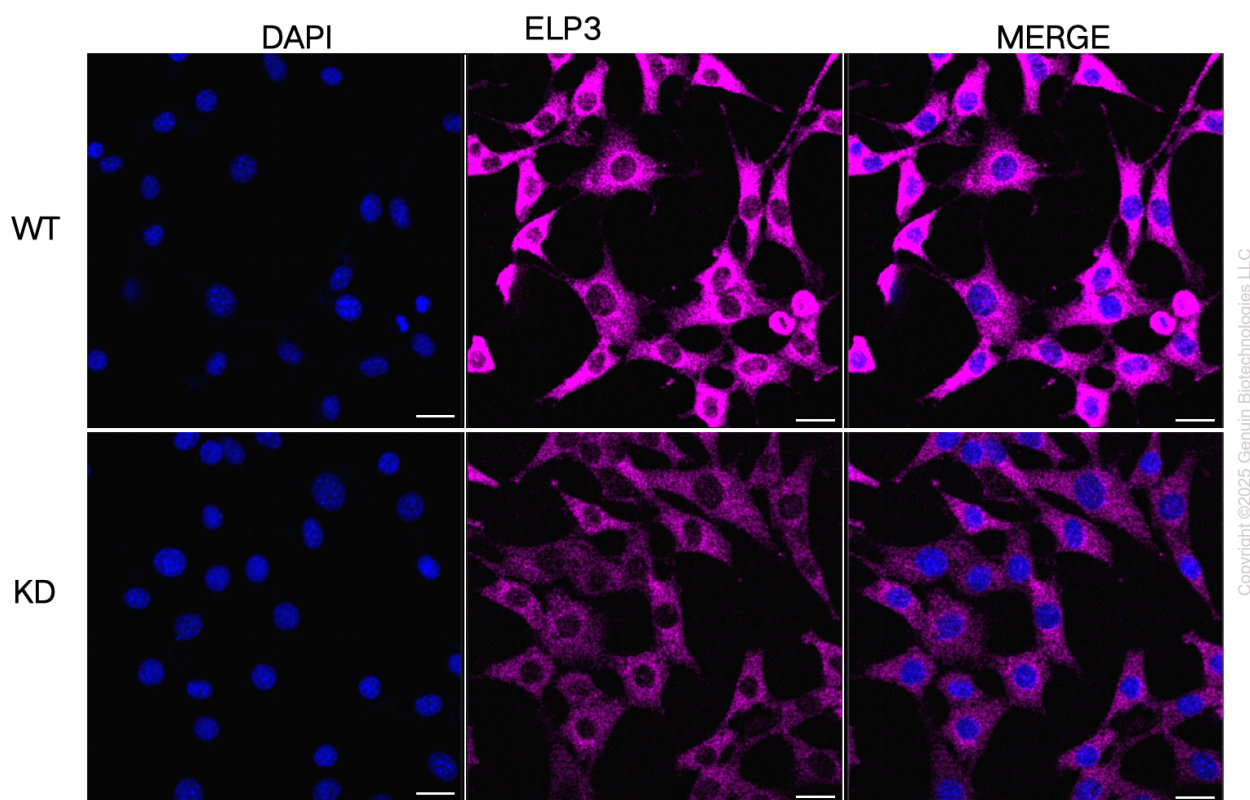


Western blotting analysis using anti-ELP3 antibody (Cat#61359). ELP3 expression in wild-type (WT) and ELP3 shRNA knockdown (KD) HT-1080 cells with 20 µg of total cell lysates. Hsp90 α serves as a loading control. The blot was incubated with anti-ELP3 antibody (Cat#61359, 1:5,000) and HRP-conjugated goat anti-rabbit secondary antibody (Cat#201, 1:20,000) respectively. Image was developed using NaQ™ ECL Substrate Kit (Cat#716).



Copyright ©2025 Genuin Biotechnologies LLC

Validation of ELP3 knockdown using flow cytometry. Wild-type(WT, Blue) and knockdown(KD, Green) HT-1080 cells were stained with anti-ELP3 antibody (Cat#61359, 1:2,000) and analyzed using BD flow cytometer.



Immunocytochemical staining of HT-1080 cells using anti-ELP3 antibody (Cat#61359, 1:1,000), Top panel: wild-type (WT); Bottom panel: ELP3 shRNA knockdown (KD). Nuclei were stained blue with DAPI; ELP3 was stained magenta with Alexa Fluor® 647. Scale bar, 20  $\mu$ m.