

# KD-Validated Anti-FANCA Recombinant Rabbit Monoclonal Antibody



**Catalog #: 61362**

## Aliases

FANCA; FA Complementation Group A; FAA; FANCH; FA-H; FACA; FAH; Fanconi Anemia Complementation Group A; Fanconi Anemia Group A Protein; Fanconi Anemia, Complementation Group H; Fanconi Anemia, Type 1; Protein FACA; FA1; FA

## Background

Gene Name: FANCA

NCBI Gene Entry: [2175](#)

UniProt Entry: [O15360](#)

## Application Information

Molecular Weight: Predicted, 163 kDa; observed, 163 kDa

Clonality: Rabbit monoclonal antibody

Clone ID: 25GB2360

Species Reactivity: Human

Applications Tested: Western blotting (WB), flow cytometry (FCM), immunocytochemistry (IC)

## Immunogen

A synthesized peptide derived from human FANCA

## Isotype

Rabbit IgG

## Storage Buffer

Supplied in PBS (pH 7.4) containing 50% glycerol, and 0.02% sodium azide.

## Storage

Store at -20 °C for one year.

## Recommended Dilutions

Western Blotting (WB): 1:1,000-1:5,000

Flow Cytometry (FCM): 1:2,000

Immunocytochemistry (IC): 1:100-1:1,000

**Note:** This product is for research use only.

---

### SUPPORT

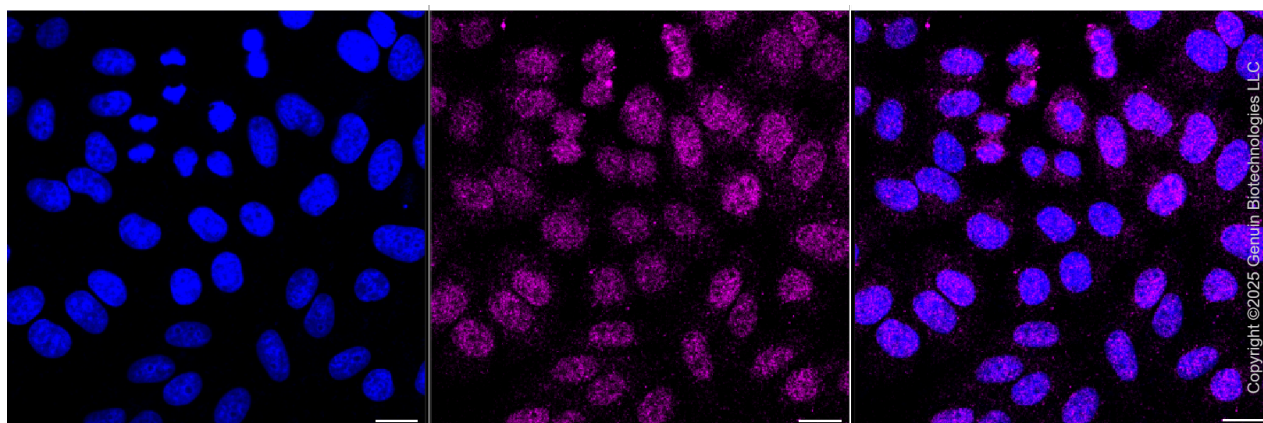
SUPPORT@GENUINBIOTECH.COM  
TEL: +1-540-855-7041

### ORDERS

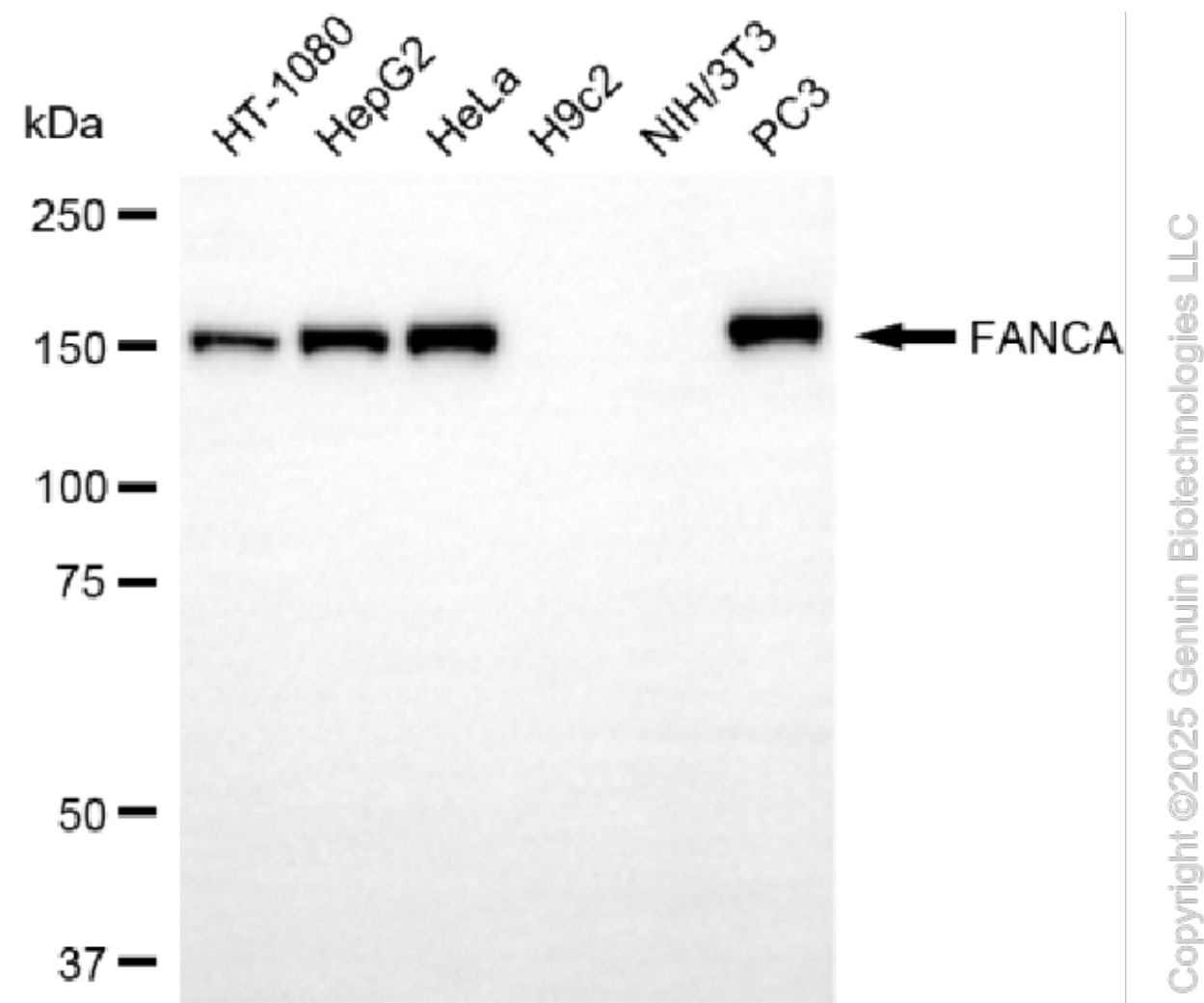
SALES@GENUINBIOTECH.COM  
FAX: +1-540-855-7041

[WWW.GENUINBIOTECH.COM](http://WWW.GENUINBIOTECH.COM)

**Validation Data**



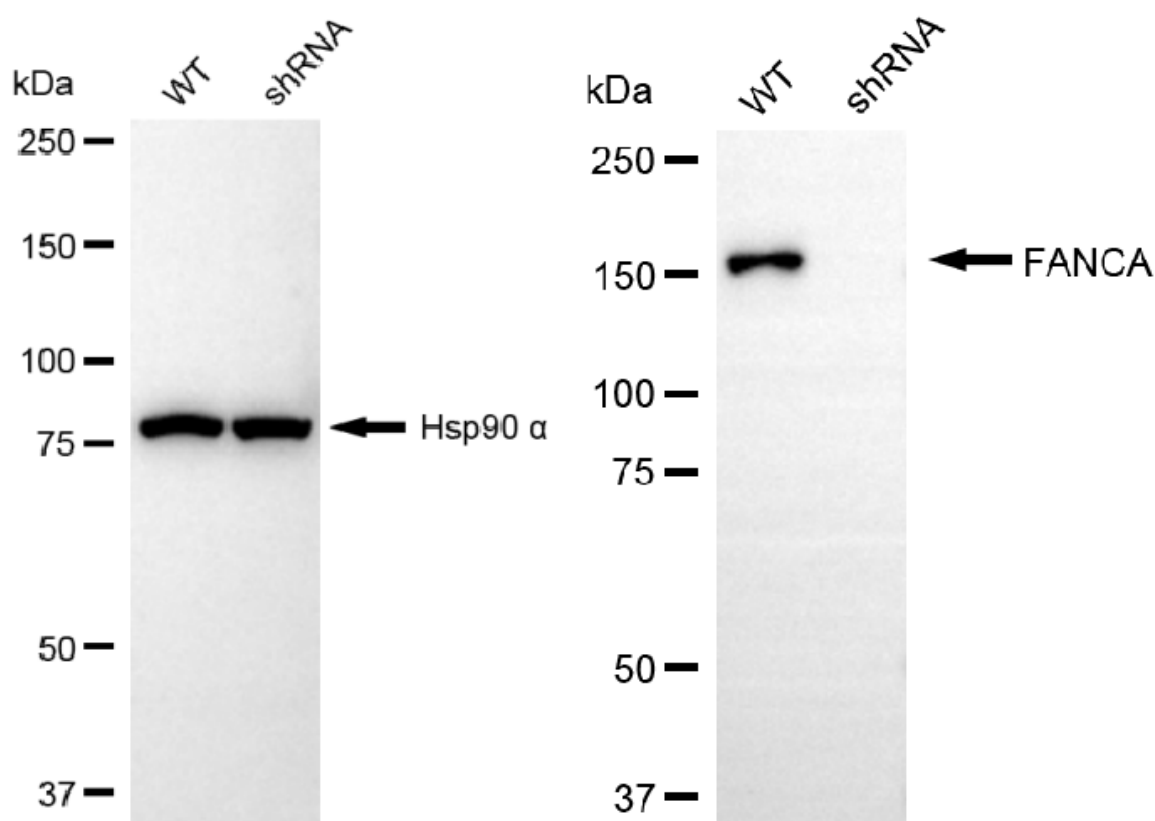
Immunocytochemical staining of HepG2 cells with anti-FANCA antibody (Cat#61362, 1:1,000). Nuclei were stained blue with anti-DAPI; FANCA was stained magenta with Alexa Fluor® 647. Images were taken using Leica stellaris 5. Protein abundance based on laser Intensity and smart gain: Low. Scale bar, 20  $\mu$ m.



## KD-Validated Anti-FANCA Recombinant Rabbit Monoclonal Antibody

PAGE 3

Western blotting analysis using anti-FANCA antibody (Cat#61362). Total cell lysates (30 µg) from various cell lines were loaded and separated by SDS-PAGE. The blot was incubated with anti-FANCA antibody (Cat#61362, 1:5,000) and HRP-conjugated goat anti-rabbit secondary antibody (Cat#201, 1:20,000) respectively. Image was developed using NaQ™ ECL Substrate Kit (Cat#716).



Copyright ©2025 Genuin Biotechnologies LLC

Western blotting analysis using anti-FANCA antibody (Cat#61362). FANCA expression in wild-type (WT) and FANCA shRNA knockdown (KD) HepG2 cells with 20 µg of total cell lysates. Hsp90 α serves as a loading control. The blot was incubated with anti-FANCA antibody (Cat#61362, 1:5,000) and HRP-conjugated goat anti-rabbit secondary antibody (Cat#201, 1:20,000) respectively. Image was developed using NaQ™ ECL Substrate Kit (Cat#716).

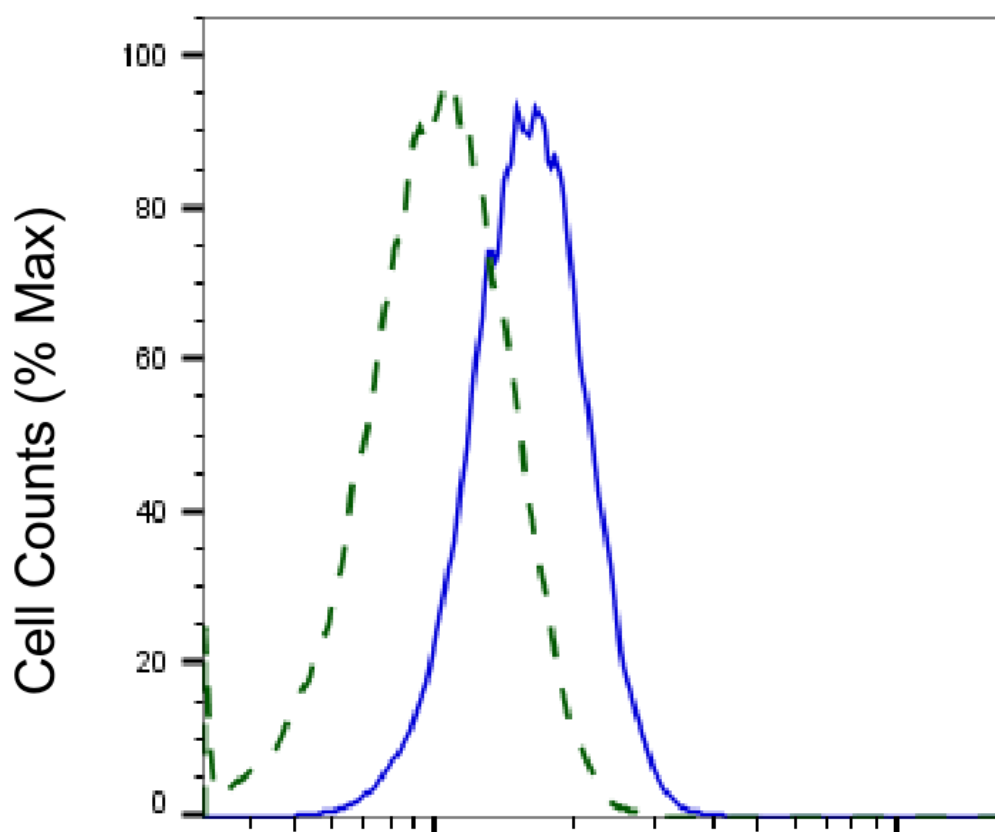
### SUPPORT

SUPPORT@GENUINBIOTECH.COM  
TEL: +1-540-855-7041

### ORDERS

SALES@GENUINBIOTECH.COM  
FAX: +1-540-855-7041

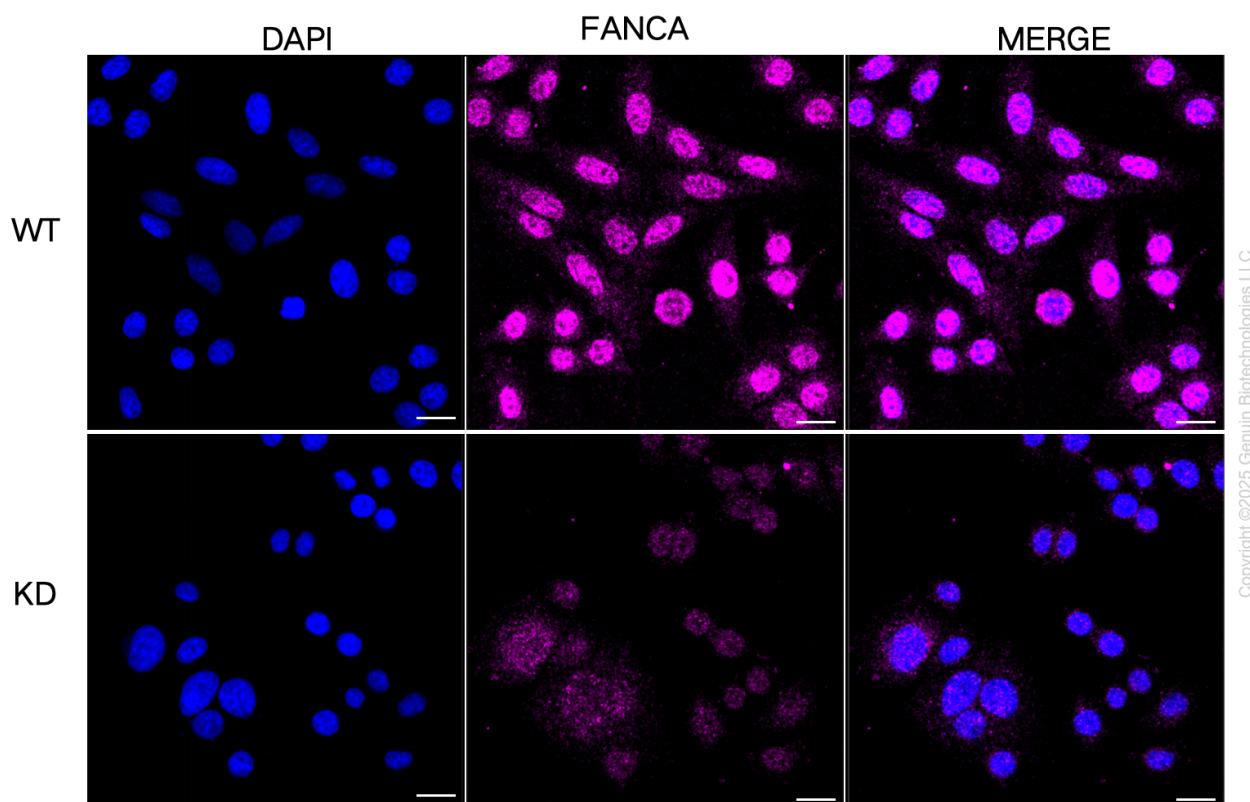
[WWW.GENUINBIOTECH.COM](http://WWW.GENUINBIOTECH.COM)



Copyright ©2025 Genuin Biotechnologies LLC

## FANCA-Alexa Fluor® 647

Validation of FANCA knockdown using flow cytometry. Wild-type(WT, Blue) and knockdown(KD, Green) HepG2 cells were stained with anti-FANCA antibody (Cat#61362, 1:2,000) and analyzed using BD flow cytometer.



Immunocytochemical staining of HepG2 cells using anti-FANCA antibody (Cat#61362, 1:1,000), Top panel: wild-type (WT); Bottom panel: FANCA shRNA knockdown (KD). Nuclei were stained blue with DAPI; FANCA was stained magenta with Alexa Fluor® 647. Scale bar, 20  $\mu$ m.