

# KD-Validated Anti-Cathepsin D Recombinant Rabbit Monoclonal Antibody



**Catalog #: 61363**

## Aliases

CTSD; Cathepsin D; CLN10; CPSD; Ceroid-Lipofuscinosis, Neuronal 10; EC 3.4.23.5; Epididymis Secretory Sperm Binding Protein Li 130P; Cathepsin D (Lysosomal Aspartyl Protease); Lysosomal Aspartyl Peptidase; Lysosomal Aspartyl Protease; HEL-S-130P; EC 3.4.23

## Background

Gene Name: CTSD

NCBI Gene Entry: [1509](#)

UniProt Entry: [P07339](#)

## Application Information

Molecular Weight: Predicted, 45 kDa, observed, 28,46 kDa

Clonality: Rabbit monoclonal antibody

Clone ID: 23GB3340

Species Reactivity: Human, mouse

Applications Tested: Western blotting (WB), flow cytometry (FCM), immunocytochemistry (IC)

## Immunogen

A synthesized peptide derived from human Cathepsin D

## Isotype

Rabbit IgG

## Storage Buffer

Supplied in PBS (pH 7.4) containing 50% glycerol, and 0.02% sodium azide.

## Storage

Store at -20 °C for one year.

## Recommended Dilutions

Western Blotting (WB): 1:1,000-1:5,000

Flow Cytometry (FCM): 1:2,000

Immunocytochemistry (IC): 1:100-1:1,000

**Note:** This product is for research use only.

---

### SUPPORT

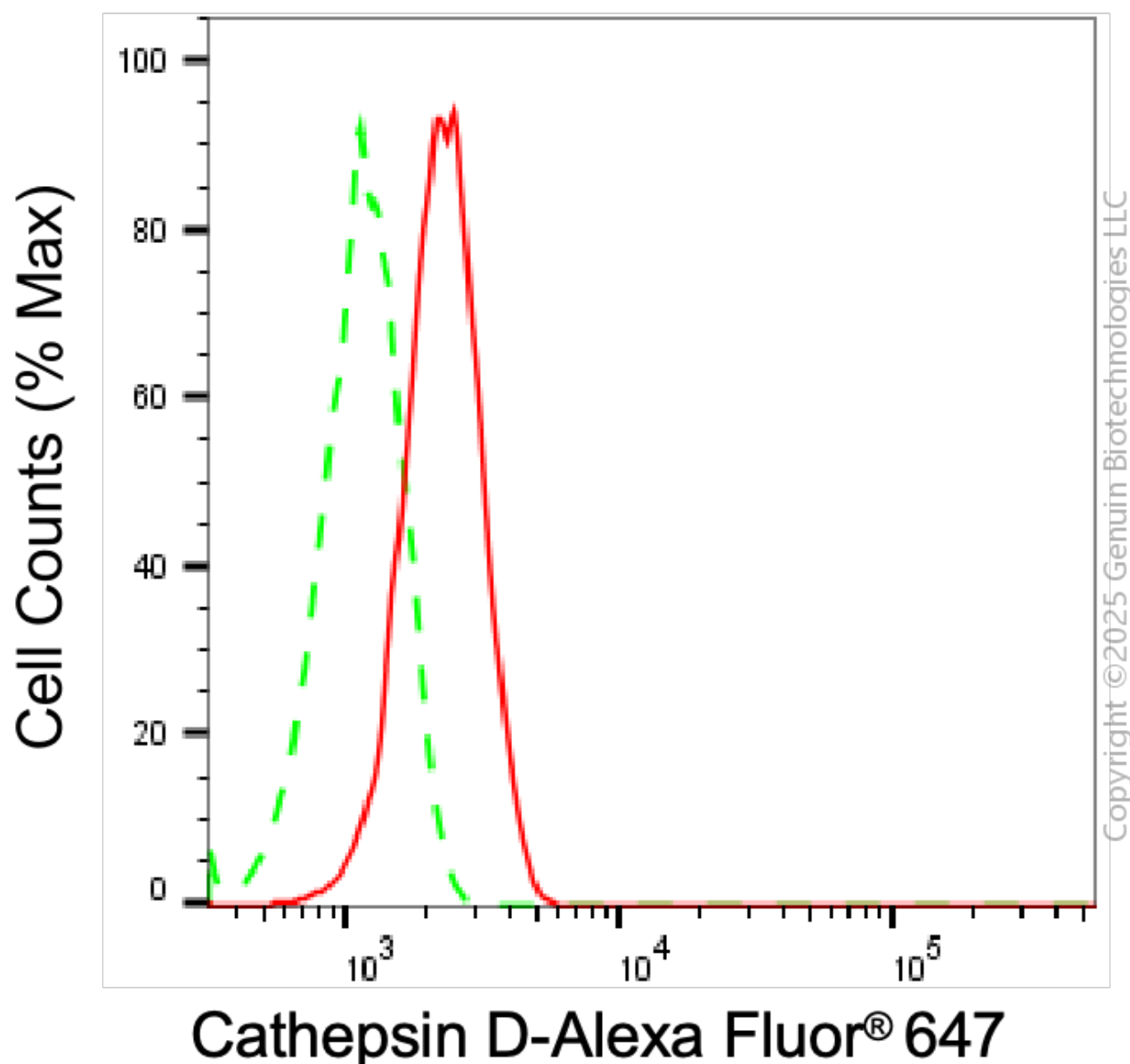
SUPPORT@GENUINBIOTECH.COM  
TEL: +1-540-855-7041

### ORDERS

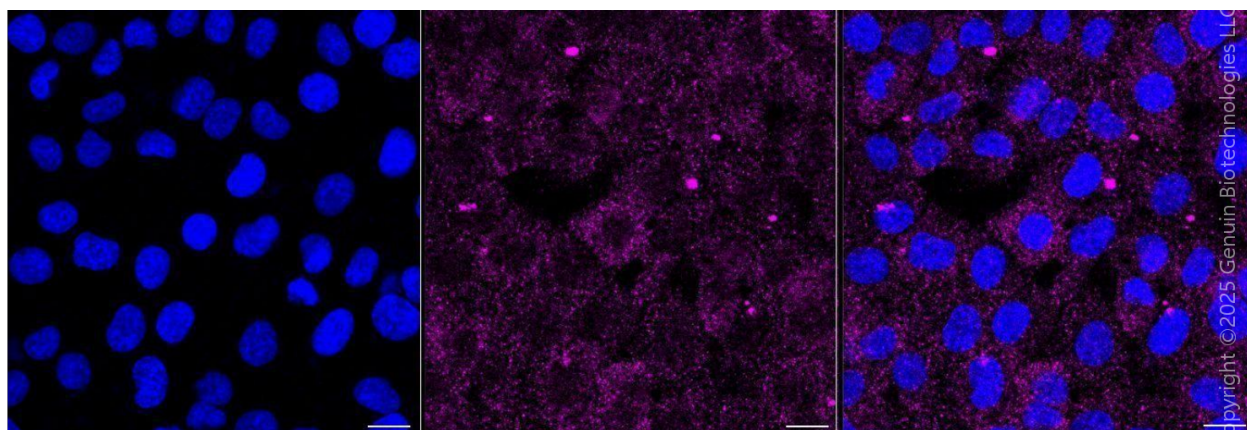
SALES@GENUINBIOTECH.COM  
FAX: +1-540-855-7041

[WWW.GENUINBIOTECH.COM](http://WWW.GENUINBIOTECH.COM)

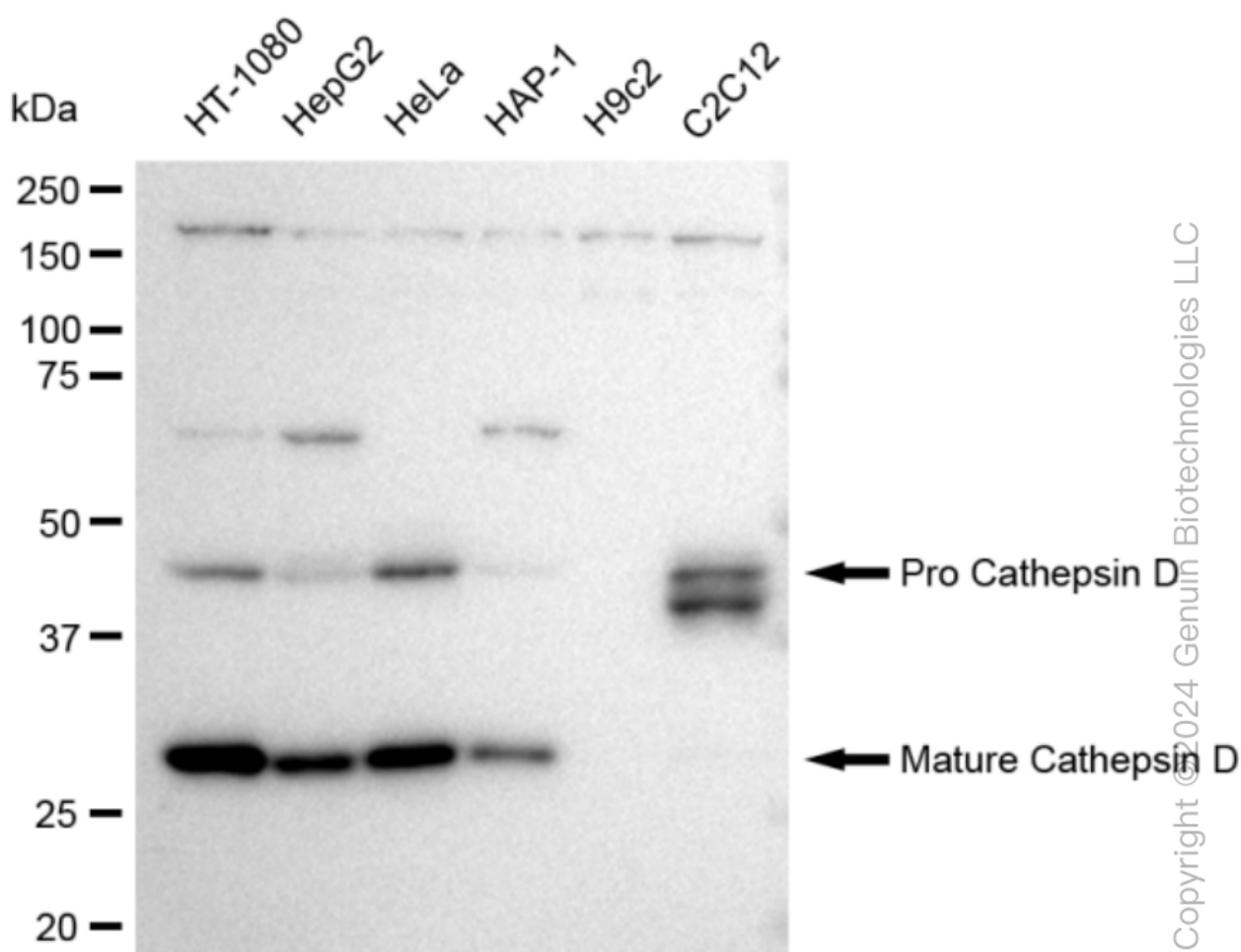
**Validation Data**



Flow cytometric analysis of Cathepsin D expression in HT-1080 cells using anti-Cathepsin D antibody (Cat#61363, 1:2,000). Green, isotype control; red, Cathepsin D.



Immunocytochemical staining of HT-1080 cells with anti-Cathepsin D antibody (Cat#61363, 1:1,000). Nuclei were stained blue with DAPI; Cathepsin D was stained magenta with Alexa Fluor® 647. Images were taken using Leica stellaris 5. Protein abundance based on laser Intensity and smart gain: Low. Scale bar, 20  $\mu$ m.

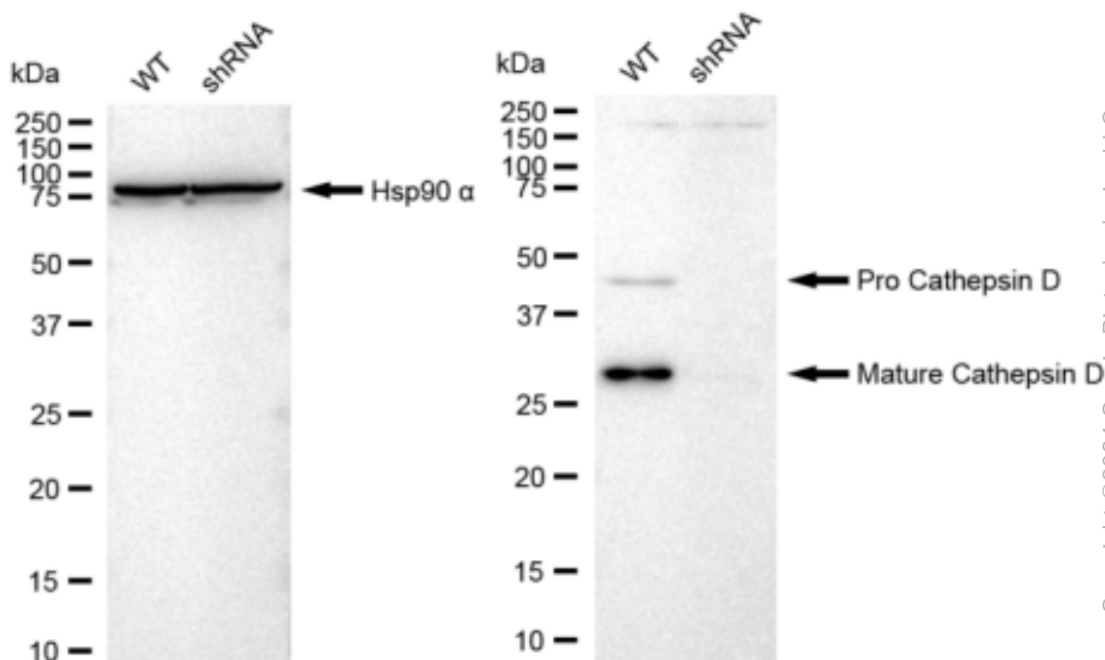


Western blotting analysis using anti-Cathepsin D antibody (Cat#61363). Total cell lysates (30  $\mu$ g) from various cell lines were loaded and separated by SDS-PAGE. The blot was incubated with

## KD-Validated Anti-Cathepsin D Recombinant Rabbit Monoclonal Antibody

PAGE 4

anti-Cathepsin D antibody (Cat#61363, 1:5,000) and HRP-conjugated goat anti-rabbit secondary antibody (Cat#201, 1:20,000) respectively. Image was developed using FeQ™ ECL Substrate Kit (Cat#226).



Western blotting analysis using anti-Cathepsin D antibody (Cat#61363). Cathepsin D expression in wild type (WT) and Cathepsin D shRNA knockdown (KD) HeLa cells with 30 µg of total cell lysates. Hsp90 α serves as a loading control. The blot was incubated with anti-Cathepsin D antibody (Cat#61363, 1:5,000) and HRP-conjugated goat anti-rabbit secondary antibody (Cat#201, 1:20,000) respectively. Image was developed using FeQ™ ECL Substrate Kit (Cat#226).

### SUPPORT

SUPPORT@GENUINBIOTECH.COM  
TEL: +1-540-855-7041

### ORDERS

SALES@GENUINBIOTECH.COM  
FAX: +1-540-855-7041

[WWW.GENUINBIOTECH.COM](http://WWW.GENUINBIOTECH.COM)