

# KD-Validated Anti-ABCD1 Recombinant Rabbit Monoclonal Antibody



**Catalog #: 61364**

## Aliases

ABCD1; ATP Binding Cassette Subfamily D Member 1; ALDP; AMN; ALD; ATP-Binding Cassette, Sub-Family D (ALD), Member 1; ATP-Binding Cassette Sub-Family D Member 1; Adrenoleukodystrophy Protein; Adrenoleukodystrophy; ADRENOLEUKODYSTROPHY; EC 3.1.2.-; EC 7.6.2.-; ABC42

## Background

Gene Name: ABCD1

NCBI Gene Entry: [215](#)

UniProt Entry: [P33897](#)

## Application Information

Molecular Weight: Predicted, 83 kDa, observed, 73 kDa

Clonality: Rabbit monoclonal antibody

Clone ID: 23GB3125

Species Reactivity: Human, mouse, rat

Applications Tested: Western blotting (WB), immunocytochemistry (IC)

## Immunogen

A synthesized peptide derived from human ABCD1 / ALD

## Isotype

Rabbit IgG

## Storage Buffer

Supplied in PBS (pH 7.4) containing 50% glycerol, and 0.02% sodium azide.

## Storage

Store at -20 °C for one year.

## Recommended Dilutions

Western Blotting (WB): 1:1,000-1:5,000

Immunocytochemistry (IC): 1:100-1:1,000

**Note:** This product is for research use only.

---

### SUPPORT

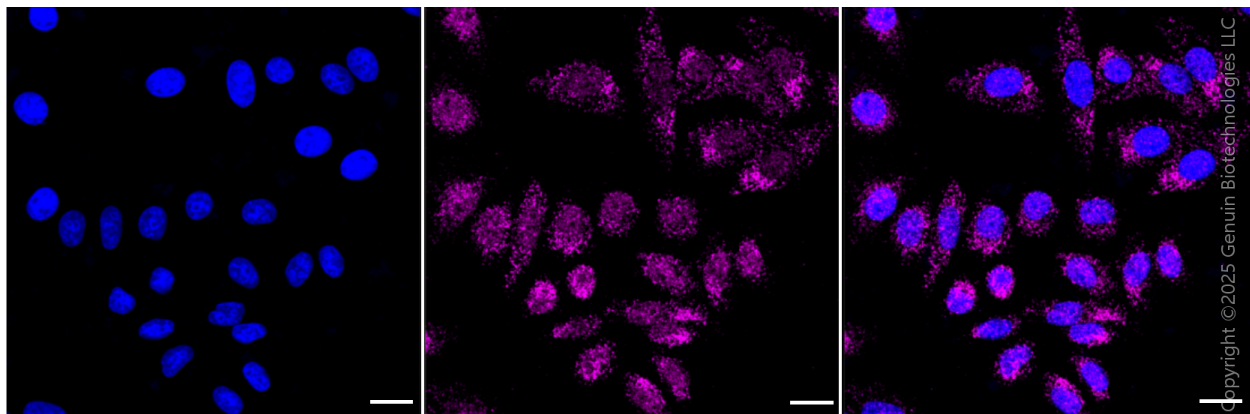
SUPPORT@GENUINBIOTECH.COM  
TEL: +1-540-855-7041

### ORDERS

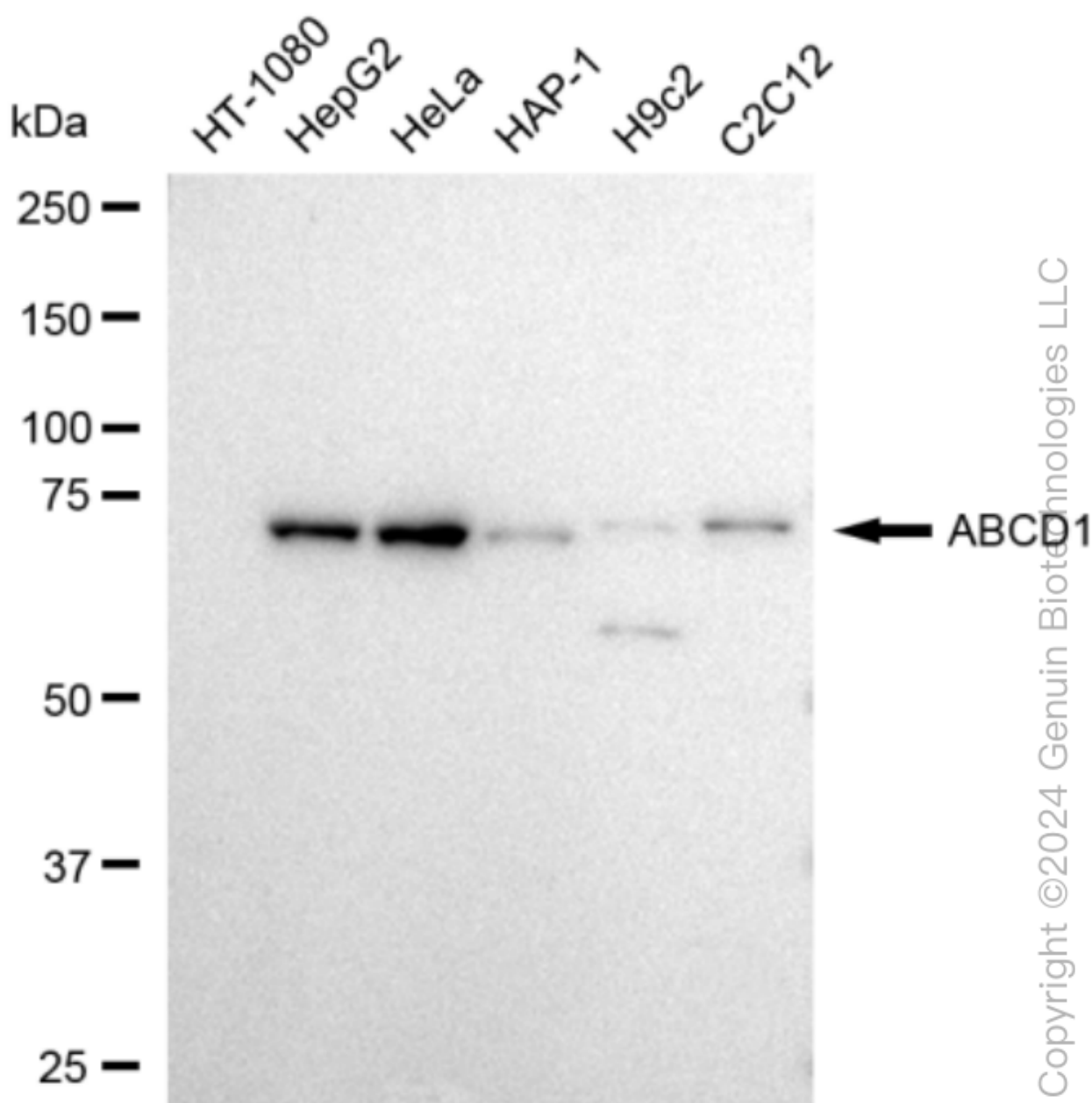
SALES@GENUINBIOTECH.COM  
FAX: +1-540-855-7041

[WWW.GENUINBIOTECH.COM](http://WWW.GENUINBIOTECH.COM)

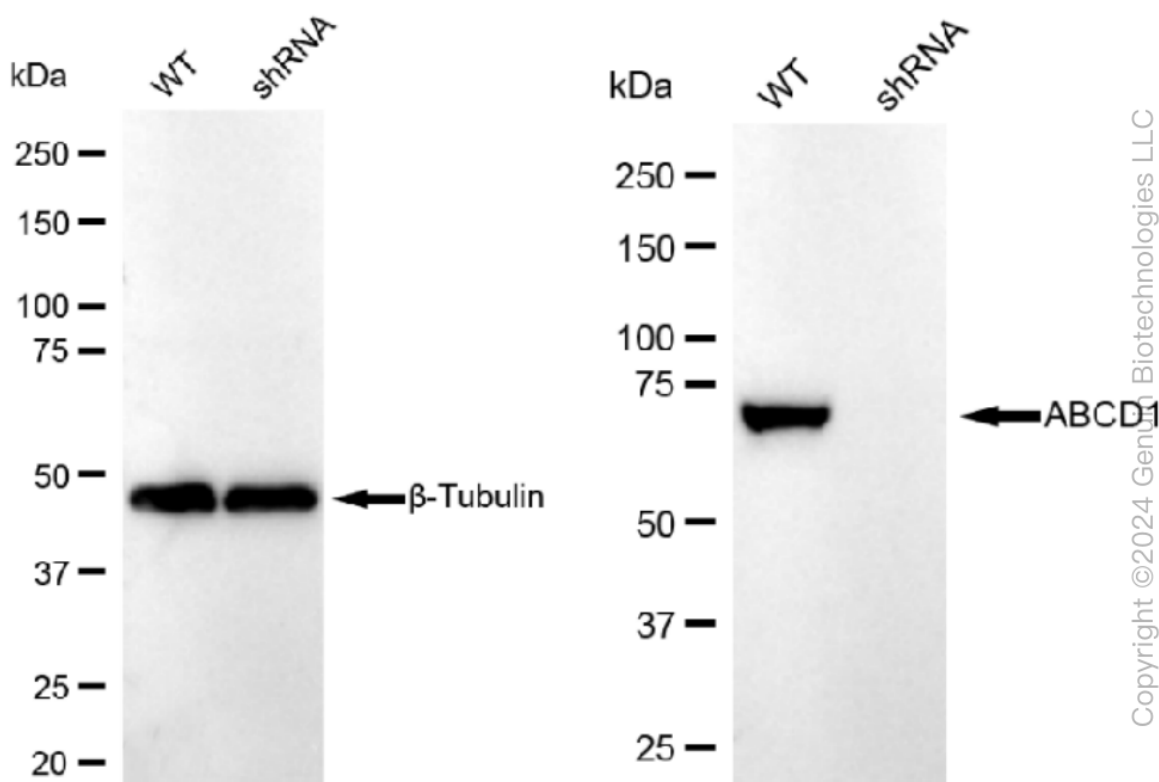
**Validation Data**



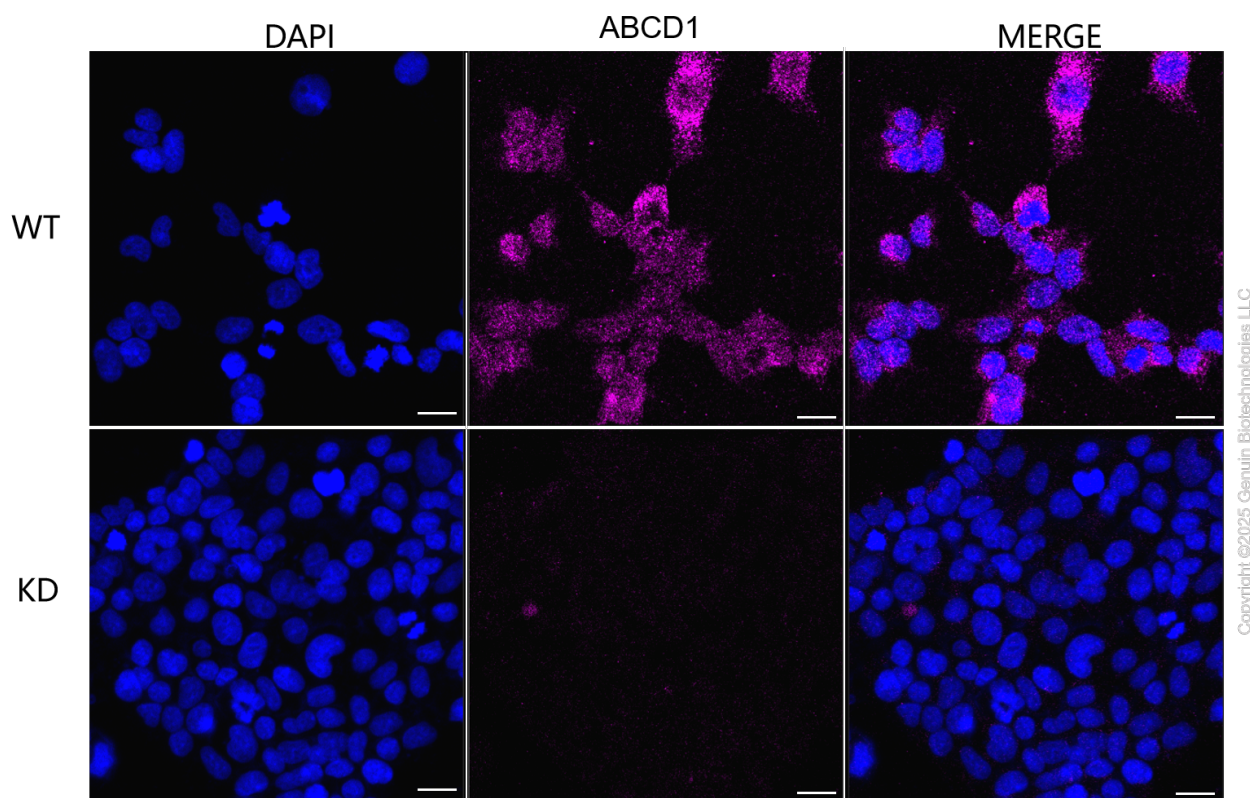
Immunocytochemical staining of HepG2 cells with anti-ABCD1 antibody (Cat#61364, 1:1000) . Nuclei were stained blue with DAPI; ABCD1 was stained magenta with Alexa Fluor® 647. Images were taken using Leica stellaris 5. Protein abundance based on laser Intensity and smart gain: Medium. Scale bar, 20  $\mu$ m.



Western blotting analysis using anti-ABCD1 antibody (Cat#61364). Total cell lysates (30 µg) from various cell lines were loaded and separated by SDS-PAGE. The blot was incubated with anti-ABCD1 antibody (Cat#61364, 1:5,000) and HRP-conjugated goat anti-rabbit secondary antibody (Cat#201, 1:20,000) respectively. Image was developed using FeQ™ ECL Substrate Kit (Cat#226).



Western blotting analysis using anti-ABCD1 antibody (Cat#61364). ABCD1 expression in wild type (WT) and ABCD1 shRNA knockdown (KD) HeLa cells with 30  $\mu$ g of total cell lysates.  $\beta$ -Tubulin serves as a loading control. The blot was incubated with anti-ABCD1 antibody (Cat#61364, 1:5,000) and HRP-conjugated goat anti-rabbit secondary antibody (Cat#201, 1:20,000) respectively. Image was developed using FeQ™ ECL Substrate Kit (Cat#226).



Immunocytochemical staining of HeLa cells using anti-ABCD1 antibody (Cat#61364, 1:1,000), Top panel: wild-type (WT); Bottom panel: ABCD1 shRNA knockdown (KD). Nuclei were stained blue with DAPI; ABCD1 was stained magenta with Alexa Fluor® 647. Scale bar, 20  $\mu$ m.