

KD-Validated Anti-ALAS1 Recombinant Rabbit Monoclonal Antibody



Catalog #: 61368

Aliases

ALAS1; 5'-Aminolevulinate Synthase 1; ALAS-H; ALAS3; 5-Aminolevulinate Synthase, Non-Specific, Mitochondrial; Aminolevulinate, Delta-, Synthase 1; 5-Aminolevulinic Acid Synthase 1; Delta-Aminolevulinate Synthase 1; Delta-ALA Synthase 1; EC 2.3.1.37; ALASH; ALAS; 5-Aminolevulinate Synthase, Nonspecific, Mitochondrial; Migration-Inducing Protein 4; EC 2.3.1; MIG4

Background

Gene Name: ALAS1

NCBI Gene Entry: [211](#)

UniProt Entry: [P13196](#)

Application Information

Molecular Weight: Predicted, 71 kDa, observed, 71 kDa

Clonality: Rabbit monoclonal antibody

Clone ID: 23GB3190

Species Reactivity: Human, rat

Applications Tested: Western blotting (WB), flow cytometry (FCM), immunocytochemistry (IC)

Immunogen

A synthesized peptide derived from human Alas1

Isotype

Rabbit IgG

Storage Buffer

Supplied in PBS (pH 7.4) containing 50% glycerol, and 0.02% sodium azide.

Storage

Store at -20 °C for one year.

Recommended Dilutions

Western Blotting (WB): 1:1,000-1:5,000

Flow Cytometry (FCM): 1:2,000

Immunocytochemistry (IC): 1:100-1:1,000

SUPPORT

SUPPORT@GENUINBIOTECH.COM
TEL: +1-540-855-7041

ORDERS

SALES@GENUINBIOTECH.COM
FAX: +1-540-855-7041

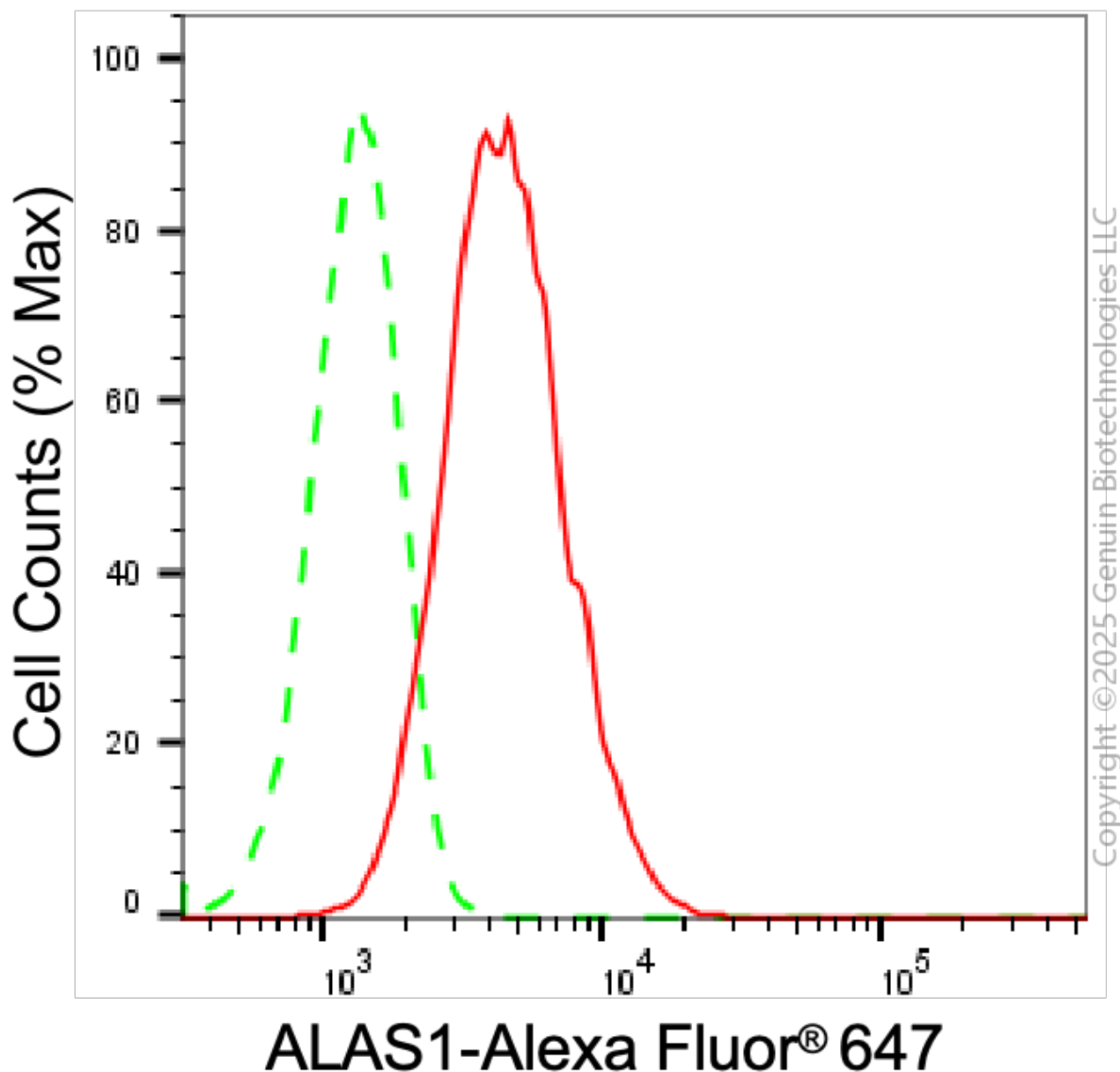
WWW.GENUINBIOTECH.COM

KD-Validated Anti-ALAS1 Recombinant Rabbit Monoclonal Antibody

PAGE 2

Note: This product is for research use only.

Validation Data



Flow cytometric analysis of ALAS1 expression in HAP-1 cells using anti-ALAS1 antibody (Cat#61368, 1:2,000). Green, isotype control; red, ALAS1.

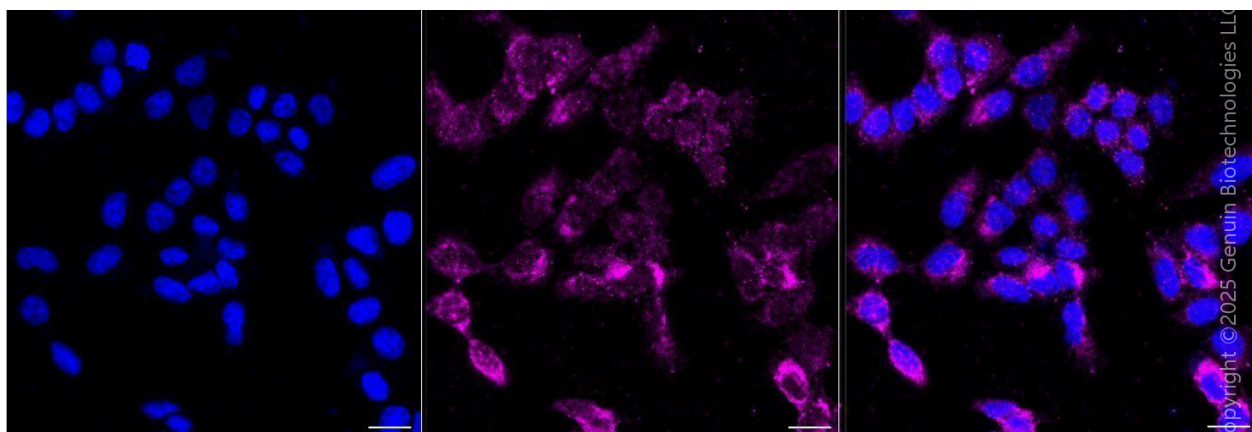
SUPPORT

SUPPORT@GENUINBIOTECH.COM
TEL: +1-540-855-7041

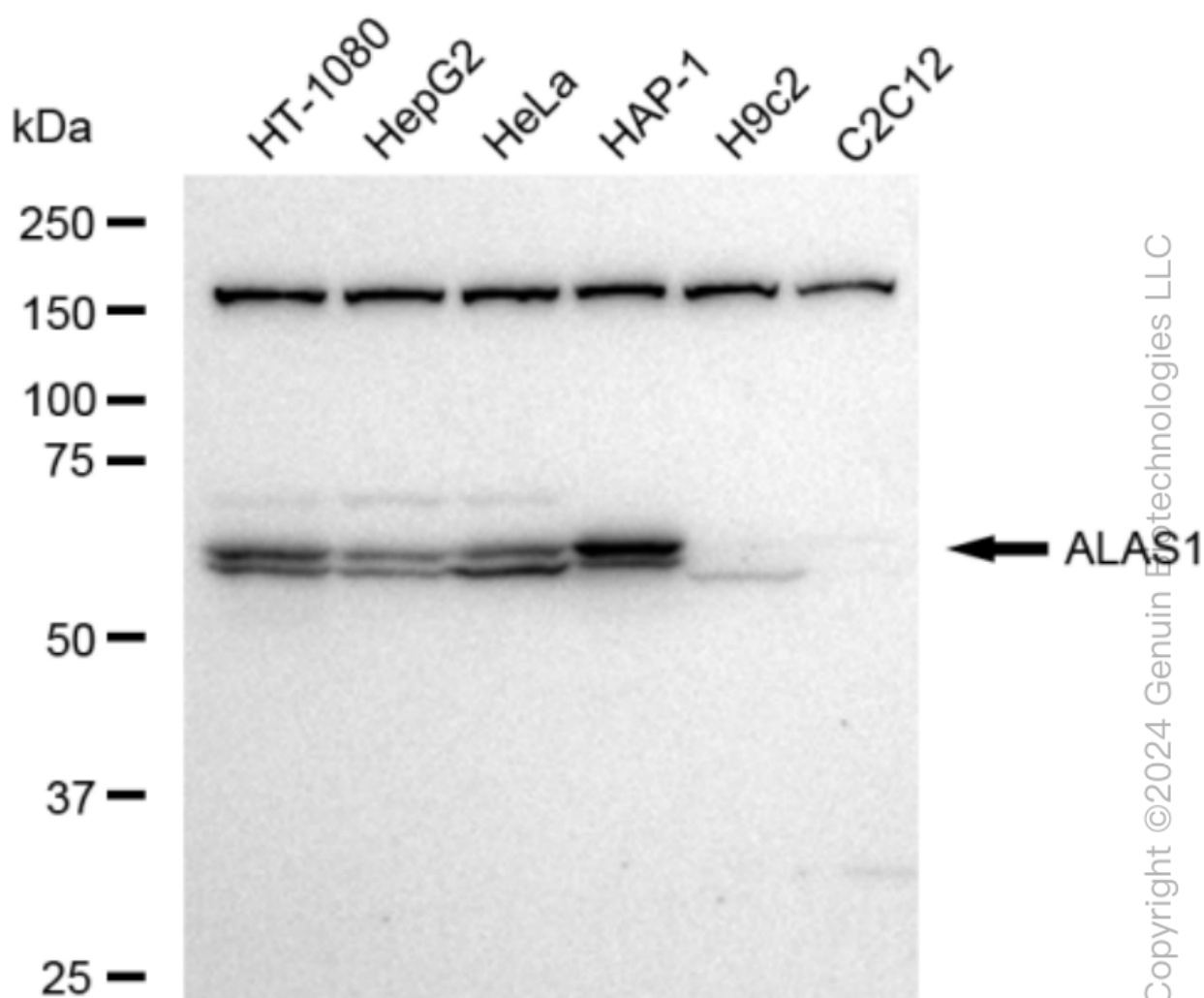
ORDERS

SALES@GENUINBIOTECH.COM
FAX: +1-540-855-7041

WWW.GENUINBIOTECH.COM



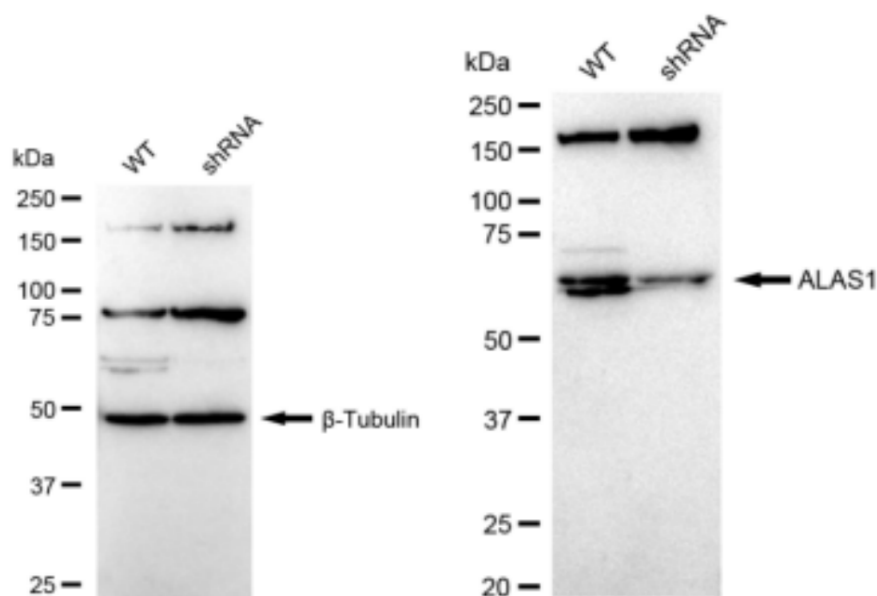
Immunocytochemical staining of HAP-1 cells with anti-ALAS1 antibody (Cat#61368, 1:1,000) . Nuclei were stained blue with DAPI; ALAS1 was stained magenta with Alexa Fluor® 647. Images were taken using Leica stellaris 5. Protein abundance based on laser Intensity and smart gain: Medium. Scale bar, 20 μ m.



KD-Validated Anti-ALAS1 Recombinant Rabbit Monoclonal Antibody

PAGE 4

Western blotting analysis using anti-ALAS1 antibody (Cat#61368). Total cell lysates (30 µg) from various cell lines were loaded and separated by SDS-PAGE. The blot was incubated with anti-ALAS1 antibody (Cat#61368, 1:5,000) and HRP-conjugated goat anti-rabbit secondary antibody (Cat#201, 1:20,000) respectively. Image was developed using FeQ™ ECL Substrate Kit (Cat#226).



Copyright ©2024 Genuin Biotechnologies LLC

Western blotting analysis using anti-ALAS1 antibody (Cat#61368). ALAS1 expression in wild type (WT) and ALAS1 shRNA knockdown (KD) HeLa cells with 30 µg of total cell lysates. β -Tubulin serves as a loading control. The blot was incubated with anti-ALAS1 antibody (Cat#61368, 1:5,000) and HRP-conjugated goat anti-rabbit secondary antibody (Cat#201, 1:20,000) respectively. Image was developed using FeQ™ ECL Substrate Kit (Cat#226).

SUPPORT

SUPPORT@GENUINBIOTECH.COM
TEL: +1-540-855-7041

ORDERS

SALES@GENUINBIOTECH.COM
FAX: +1-540-855-7041

WWW.GENUINBIOTECH.COM