

KD-Validated Anti-FLNA Recombinant Rabbit Monoclonal Antibody



Catalog #: 61369

Aliases

FLNA; Filamin A; ABP-280; FLN1; FLN; Endothelial Actin-Binding Protein; Actin Binding Protein 280; Non-Muscle Filamin; Filamin A, Alpha; Alpha-Filamin; Filamin-A; Filamin-1; FLN-A; OPD1; OPD2; Filamin A, Alpha (Actin Binding Protein 280); Epididymis Secretory Sperm Binding Protein; Actin-Binding Protein 280; Alpha Filamin; EC 2.1.1.43; EC 6.3.4.4; ABPX; CSBS; CVD1; FGS2; NHBP; XLVD; XMVD; FMD; MNS; OPD

Background

Gene Name: FLNA

NCBI Gene Entry: [2316](#)

UniProt Entry: [P21333](#)

Application Information

Molecular Weight: Predicted, 281 kDa; observed, 281 kDa

Clonality: Rabbit monoclonal antibody

Clone ID: 25GB2375

Species Reactivity: Human, mouse, rat

Applications Tested: Western blotting (WB), flow cytometry (FCM), immunocytochemistry (IC)

Immunogen

A synthesized peptide derived from human Filamin A

Isotype

Rabbit IgG

Storage Buffer

Supplied in PBS (pH 7.4) containing 50% glycerol, and 0.02% sodium azide.

Storage

Store at -20 °C for one year.

Recommended Dilutions

Western Blotting (WB): 1:2,000-1:10,000

Flow Cytometry (FCM): 1:2,000

Immunocytochemistry (IC): 1:100-1:1,000

SUPPORT

SUPPORT@GENUINBIOTECH.COM
TEL: +1-540-855-7041

ORDERS

SALES@GENUINBIOTECH.COM
FAX: +1-540-855-7041

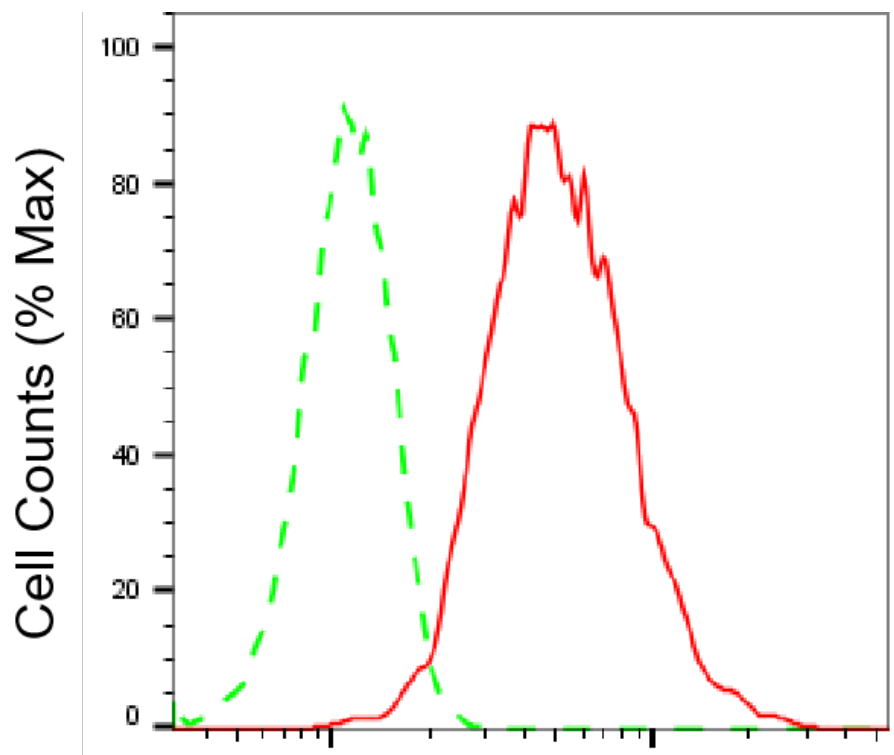
WWW.GENUINBIOTECH.COM

KD-Validated Anti-FLNA Recombinant Rabbit Monoclonal Antibody

PAGE 2

Note: This product is for research use only.

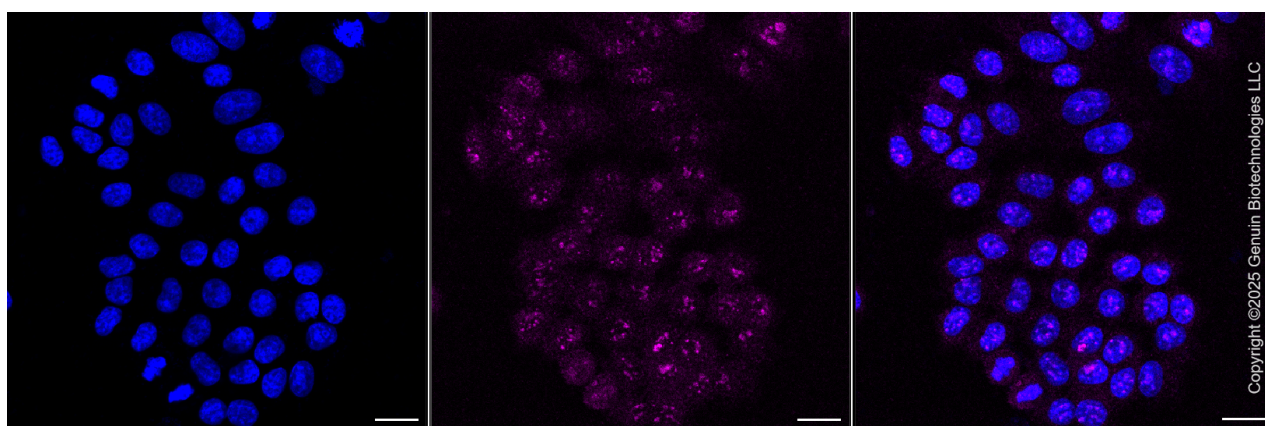
Validation Data



Copyright ©2025 Genuin Biotechnologies LLC

FLNA-Alexa Fluor® 647

Flow cytometric analysis of FLNA expression in HepG2 cells using FLNA antibody (Cat#61369, 1:2,000). Green, isotype control; red, FLNA.



Copyright ©2025 Genuin Biotechnologies LLC

Immunocytochemical staining of HepG2 cells with anti-FLNA antibody (Cat#61369, 1:1,000). Nuclei were stained blue with DAPI; FLNA was stained magenta with Alexa Fluor® 647. Images were taken using Leica stellaris 5. Protein abundance based on laser Intensity and smart gain: Medium. Scale bar, 20 µm.

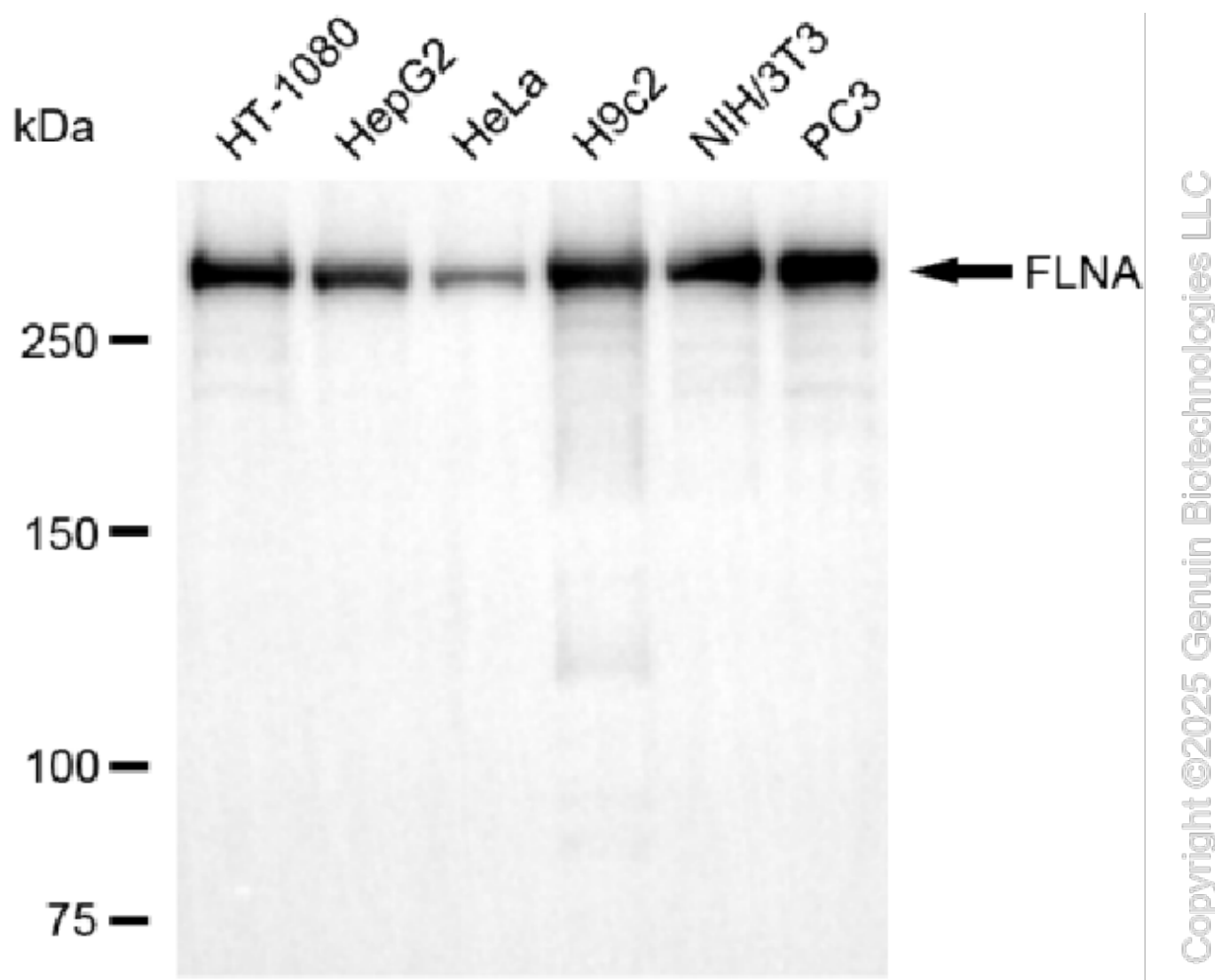
SUPPORT

SUPPORT@GENUINBIOTECH.COM
TEL: +1-540-855-7041

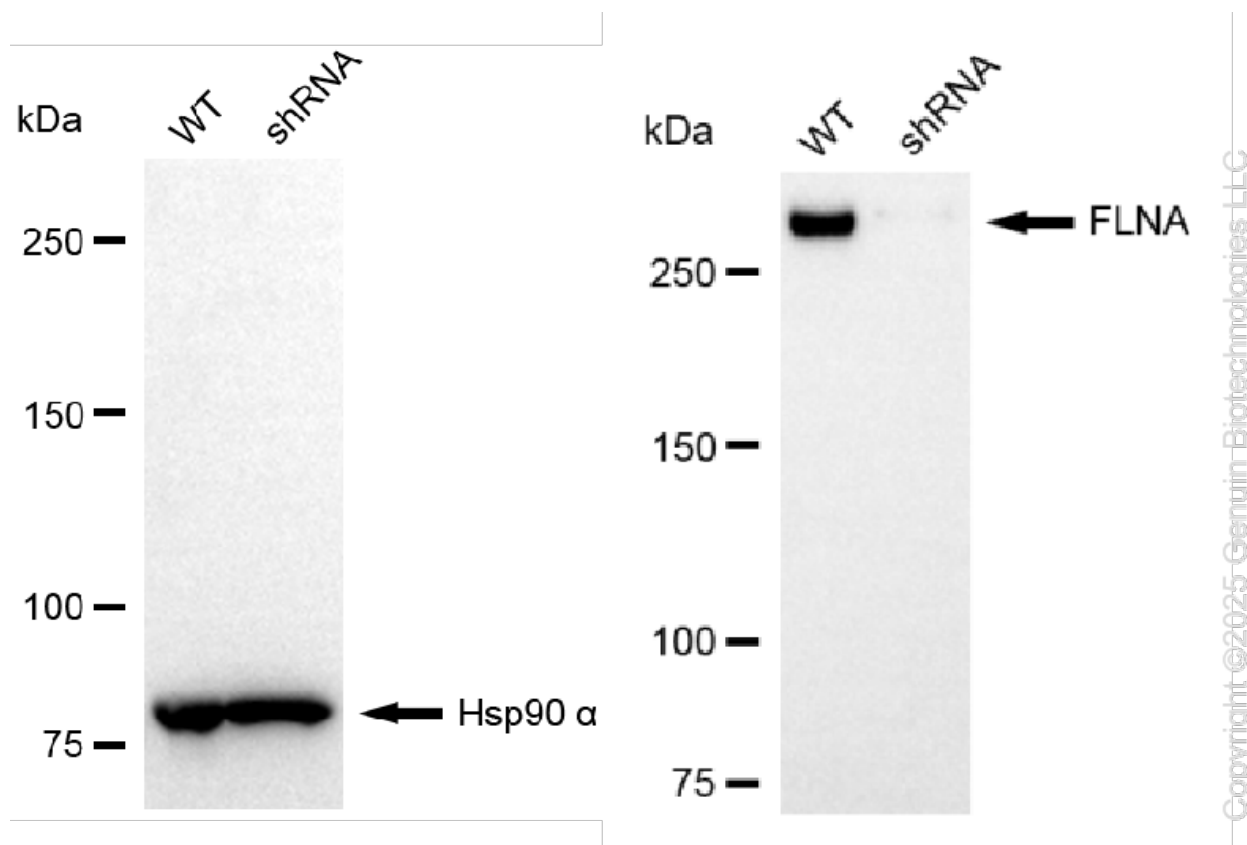
ORDERS

SALES@GENUINBIOTECH.COM
FAX: +1-540-855-7041

WWW.GENUINBIOTECH.COM



Western blotting analysis using anti-FLNA antibody (Cat#61369). Total cell lysates (30 µg) from various cell lines were loaded and separated by SDS-PAGE. The blot was incubated with anti-FLNA antibody (Cat#61369, 1:10,000) and HRP-conjugated goat anti-rabbit secondary antibody (Cat#201, 1:20,000) respectively. Image was developed using NaQ™ ECL Substrate Kit (Cat#716).



Western blotting analysis using anti-FLNA antibody (Cat#61369). FLNA expression in wild-type (WT) and FLNA shRNA knockdown (KD) HeLa cells with 20 μ g of total cell lysates. Hsp90 α serves as a loading control. The blot was incubated with anti-FLNA antibody (Cat#61369, 1:5,000) and HRP-conjugated goat anti-rabbit secondary antibody (Cat#201, 1:20,000) respectively. Image was developed using NaQ™ ECL Substrate Kit (Cat#716).