

KD-Validated Anti-Flotillin 2 Recombinant Rabbit Monoclonal Antibody



Catalog #: 61370

Aliases

FLOT2; Flotillin 2; ESA1; ESA; ECS-1; M17S1; ECS1; Membrane Component, Chromosome 17, Surface Marker 1 (35kD Protein Identified By Monoclonal Antibody ECS-1); Membrane Component Chromosome 17 Surface Marker 1; Flotillin 2 (Epidermal Surface Antigen 1); Epidermal Surface Antigen; Flotillin-2

Background

Gene Name: FLOT2

NCBI Gene Entry: [2319](#)

UniProt Entry: [Q14254](#)

Application Information

Molecular Weight: Predicted, 47 kDa; observed, 47 kDa

Clonality: Rabbit monoclonal antibody

Clone ID: 25GB2380

Species Reactivity: Human, mouse, rat

Applications Tested: Western blotting (WB), immunocytochemistry (IC)

Immunogen

A synthesized peptide derived from human Flotillin 2

Isotype

Rabbit IgG

Storage Buffer

Supplied in PBS (pH 7.4) containing 50% glycerol, and 0.02% sodium azide.

Storage

Store at -20 °C for one year.

Recommended Dilutions

Western Blotting (WB): 1:1,000-1:5,000

Immunocytochemistry (IC): 1:100-1:1,000

Note: This product is for research use only.

SUPPORT

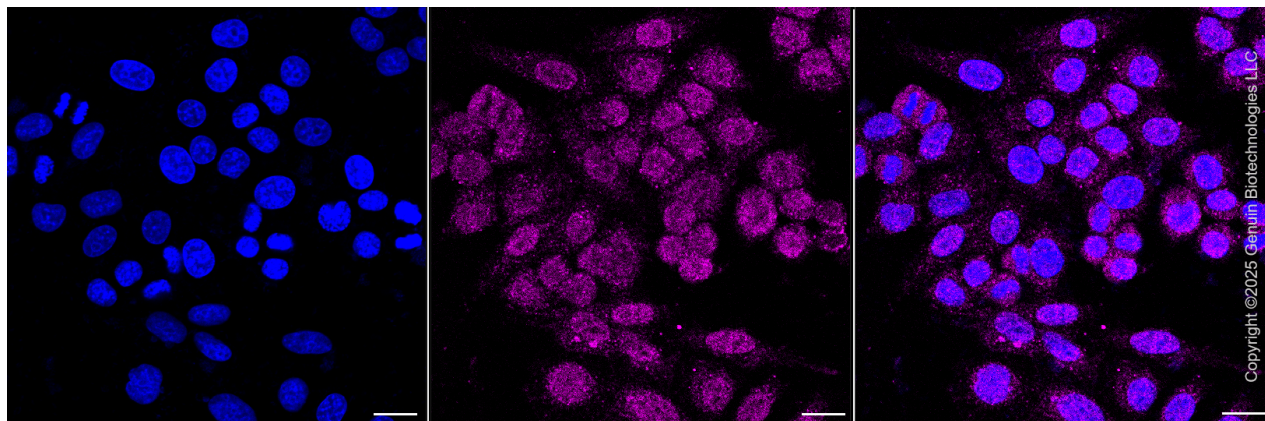
SUPPORT@GENUINBIOTECH.COM
TEL: +1-540-855-7041

ORDERS

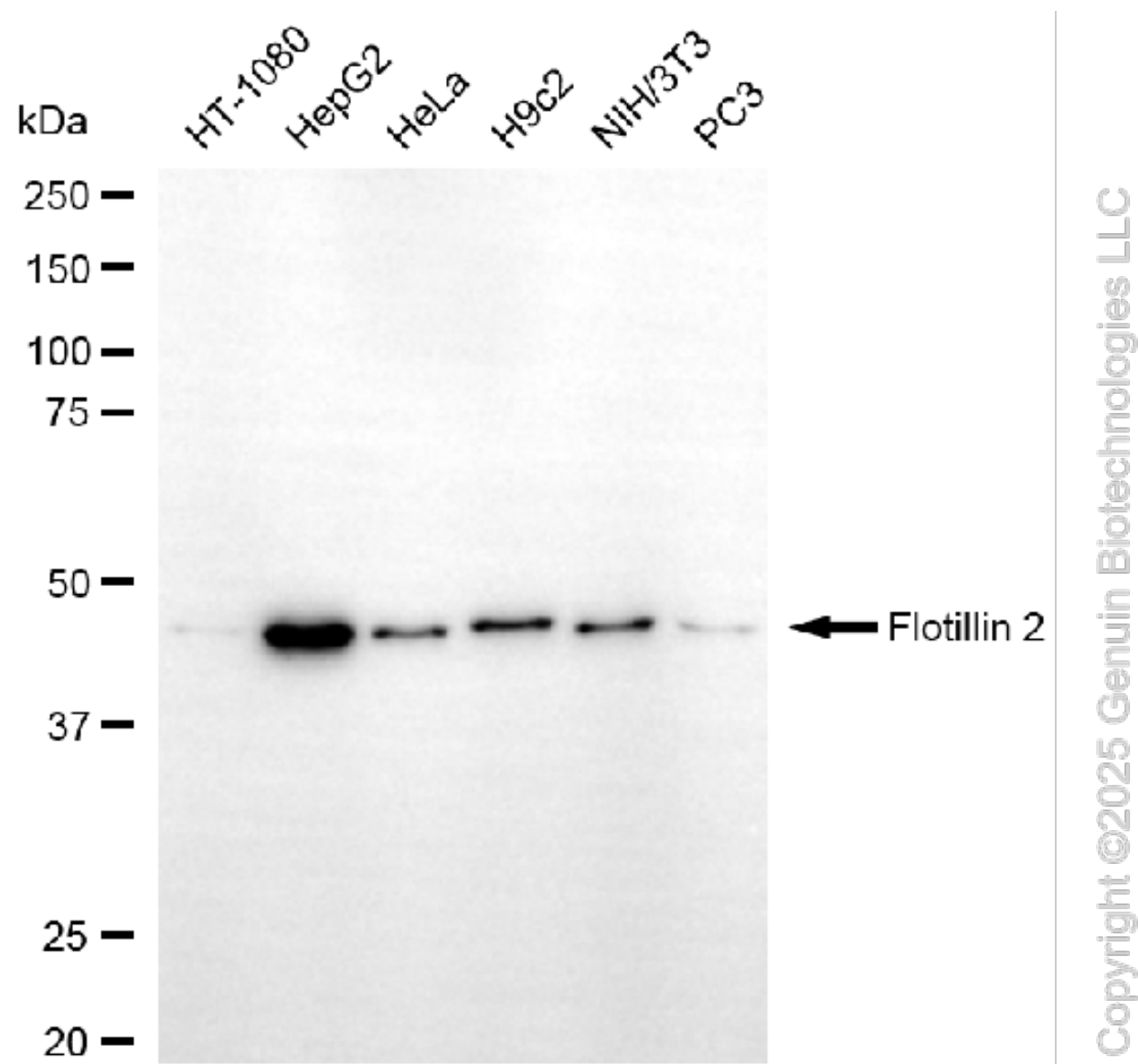
SALES@GENUINBIOTECH.COM
FAX: +1-540-855-7041

WWW.GENUINBIOTECH.COM

Validation Data



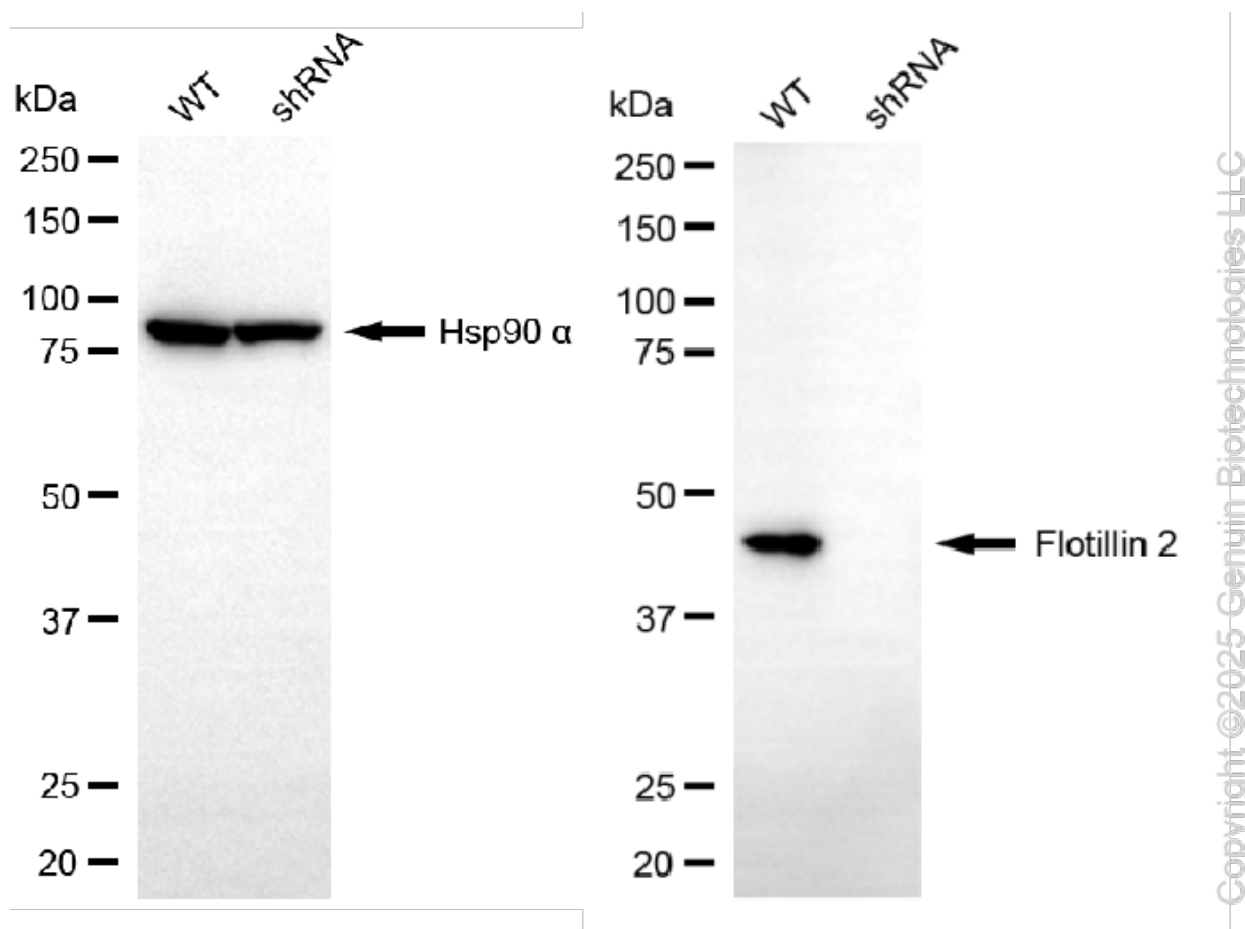
Immunocytochemical staining of HepG2 cells with anti-Flotillin 2 antibody (Cat#61370, 1:1,000). Nuclei were stained blue with DAPI; Flotillin 2 was stained magenta with Alexa Fluor® 647. Images were taken using Leica stellaris 5. Protein abundance based on laser Intensity and smart gain: Medium. Scale bar, 20 μ m.



Western blotting analysis using anti-flotillin 2 antibody (Cat#61370). Total cell lysates (30 μ g) from various cell lines were loaded and separated by SDS-PAGE. The blot was incubated with anti-flotillin 2 antibody (Cat#61370, 1:5,000) and HRP-conjugated goat anti-rabbit secondary antibody (Cat#201, 1:20,000) respectively. Image was developed using FeQ™ ECL Substrate Kit (Cat#226).

KD-Validated Anti-Flotillin 2 Recombinant Rabbit Monoclonal Antibody

PAGE 4



Western blotting analysis using anti-flotillin 2 antibody (Cat#61370). Flotillin 2 expression in wild-type (WT) and flotillin 2 (FLOT2) shRNA knockdown (KD) HepG2 cells with 20 μ g of total cell lysates. Hsp90 α serves as a loading control. The blot was incubated with anti-flotillin 2 antibody (Cat#61370, 1:5,000) and HRP-conjugated goat anti-rabbit secondary antibody (Cat#201, 1:20,000) respectively. Image was developed using FeQ™ ECL Substrate Kit (Cat#226).

SUPPORT

SUPPORT@GENUINBIOTECH.COM
TEL: +1-540-855-7041

ORDERS

SALES@GENUINBIOTECH.COM
FAX: +1-540-855-7041

WWW.GENUINBIOTECH.COM