

KD-Validated Anti-FOXP1 Recombinant Rabbit Monoclonal Antibody



Catalog #: 61371

Aliases

FOXP1; Forkhead Box P1; HSPC215; HFKH1B; 12CC4; QRF1; Fork Head-Related Protein Like B; Mac-1-Regulated Forkhead; Glutamine-Rich Factor 1; Forkhead Box Protein P1; MFH; PAX5/FOXP1 Fusion Protein

Background

Gene Name: FOXP1

NCBI Gene Entry: [27086](#)

UniProt Entry: [Q9H334](#)

Application Information

Molecular Weight: Predicted, 75 kDa; observed, 80,90 kDa

Clonality: Rabbit monoclonal antibody

Clone ID: 25GB2385

Species Reactivity: Human, mouse, rat

Applications Tested: Western blotting (WB), flow cytometry (FCM), immunocytochemistry (IC)

Immunogen

A synthesized peptide derived from human FOXP1

Isotype

Rabbit IgG

Storage Buffer

Supplied in PBS (pH 7.4) containing 50% glycerol, and 0.02% sodium azide.

Storage

Store at -20 °C for one year.

Recommended Dilutions

Western blotting (WB): 1:1,000-1:5,000

Flow Cytometry (FCM): 1:2,000

Immunocytochemistry (IC): 1:100-1:1,000

Note: This product is for research use only.

SUPPORT

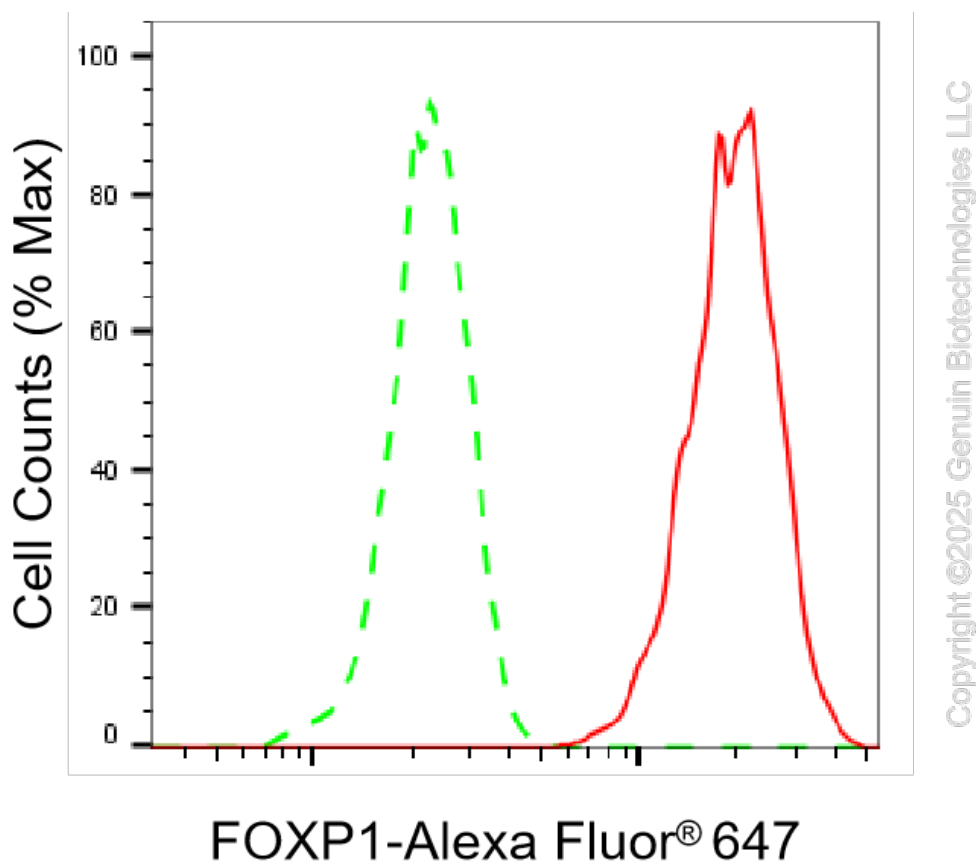
SUPPORT@GENUINBIOTECH.COM
TEL: +1-540-855-7041

ORDERS

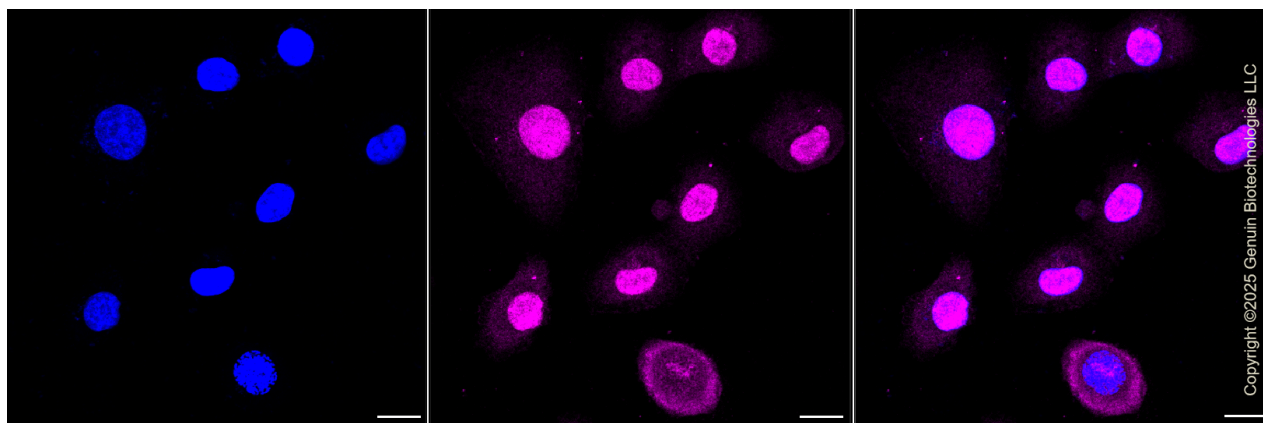
SALES@GENUINBIOTECH.COM
FAX: +1-540-855-7041

WWW.GENUINBIOTECH.COM

Validation Data



Flow cytometric analysis of FOXP1 expression in HT-1080 cells using FOXP1 antibody (Cat#61371, 1:2,000). Green, isotype control; red, FOXP1.



Immunocytochemical staining of HT-1080 cells with anti-FOXP1 antibody (Cat#61371, 1:1,000). Nuclei were stained blue with DAPI; FOXP1 was stained magenta with Alexa Fluor® 647. Images were taken using Leica stellaris 5. Protein abundance based on laser Intensity and smart gain: Medium. Scale bar, 20 μ m.

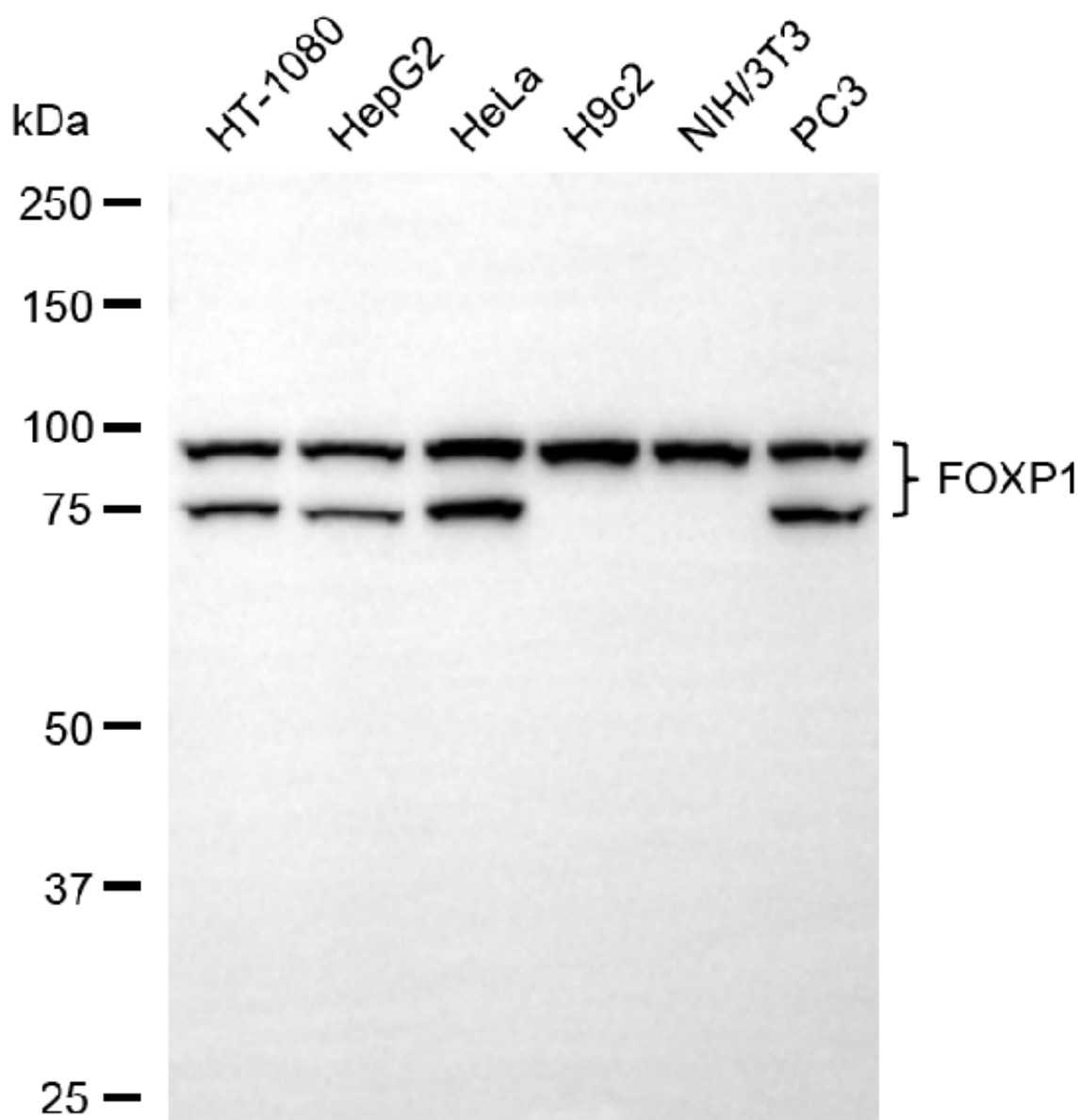
SUPPORT

SUPPORT@GENUINBIOTECH.COM
TEL: +1-540-855-7041

ORDERS

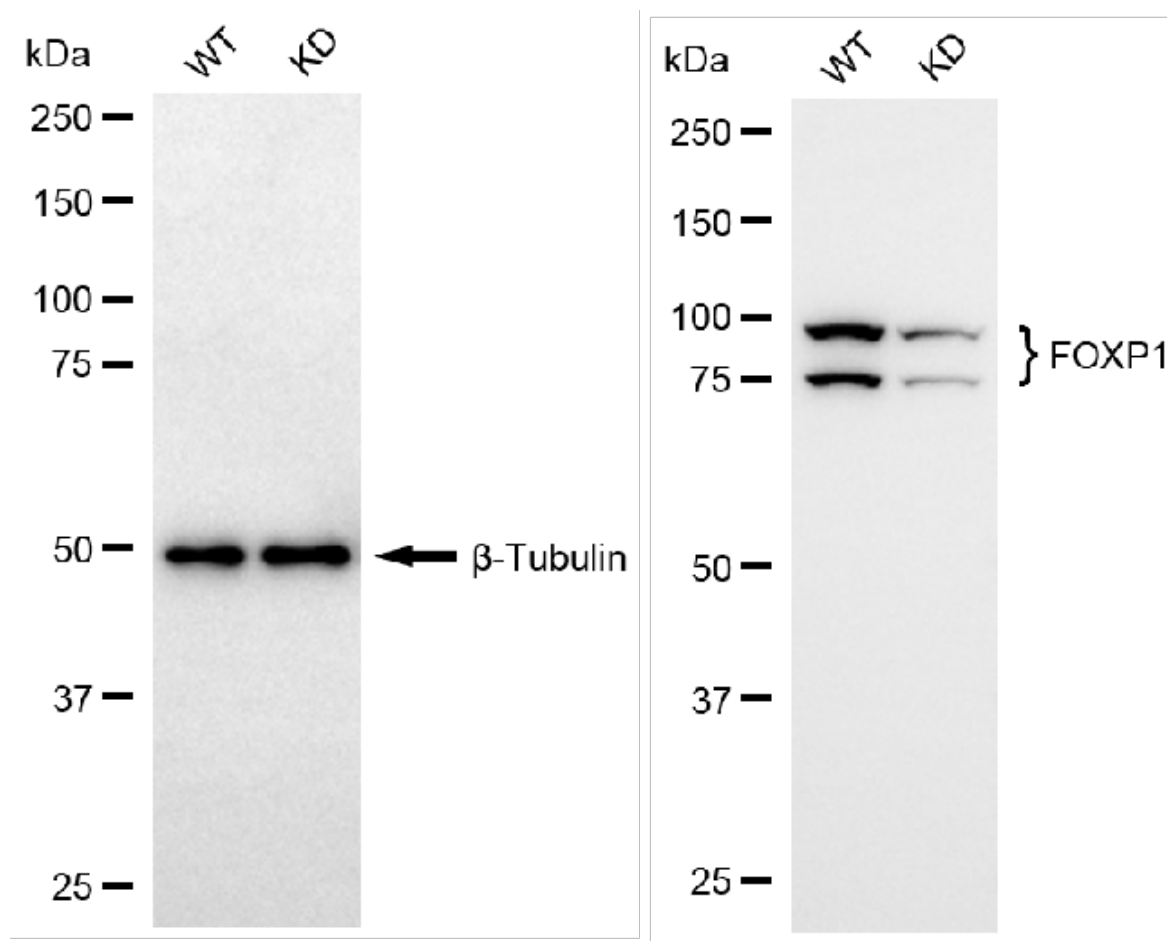
SALES@GENUINBIOTECH.COM
FAX: +1-540-855-7041

WWW.GENUINBIOTECH.COM



Copyright ©2025 Genuin Biotechnologies LLC

Western blotting analysis using anti-FOXP1 antibody (Cat#61371). Total cell lysates (30 µg) from various cell lines were loaded and separated by SDS-PAGE. The blot was incubated with anti-FOXP1 antibody (Cat#61371, 1:5,000) and HRP-conjugated goat anti-rabbit secondary antibody (Cat#201, 1:20,000) respectively. Image was developed using NaQ™ ECL Substrate Kit (Cat#716).



Western blotting analysis using anti-FOXP1 antibody (Cat#61371). FOXP1 expression in wild-type (WT) and FOXP1 knockdown (KD) HeLa cells with 20 μ g of total cell lysates. β -Tubulin serves as a loading control. The blot was incubated with anti-FOXP1 antibody (Cat#61371, 1:5,000) and HRP-conjugated goat anti-rabbit secondary antibody (Cat#201, 1:20,000) respectively. Image was developed using NaQ™ ECL Substrate Kit (Cat#716).